

WELCOME TO

HOTEL
BRISTOL BERLIN
1952 ONWARDS

MEETINGS & EVENTS



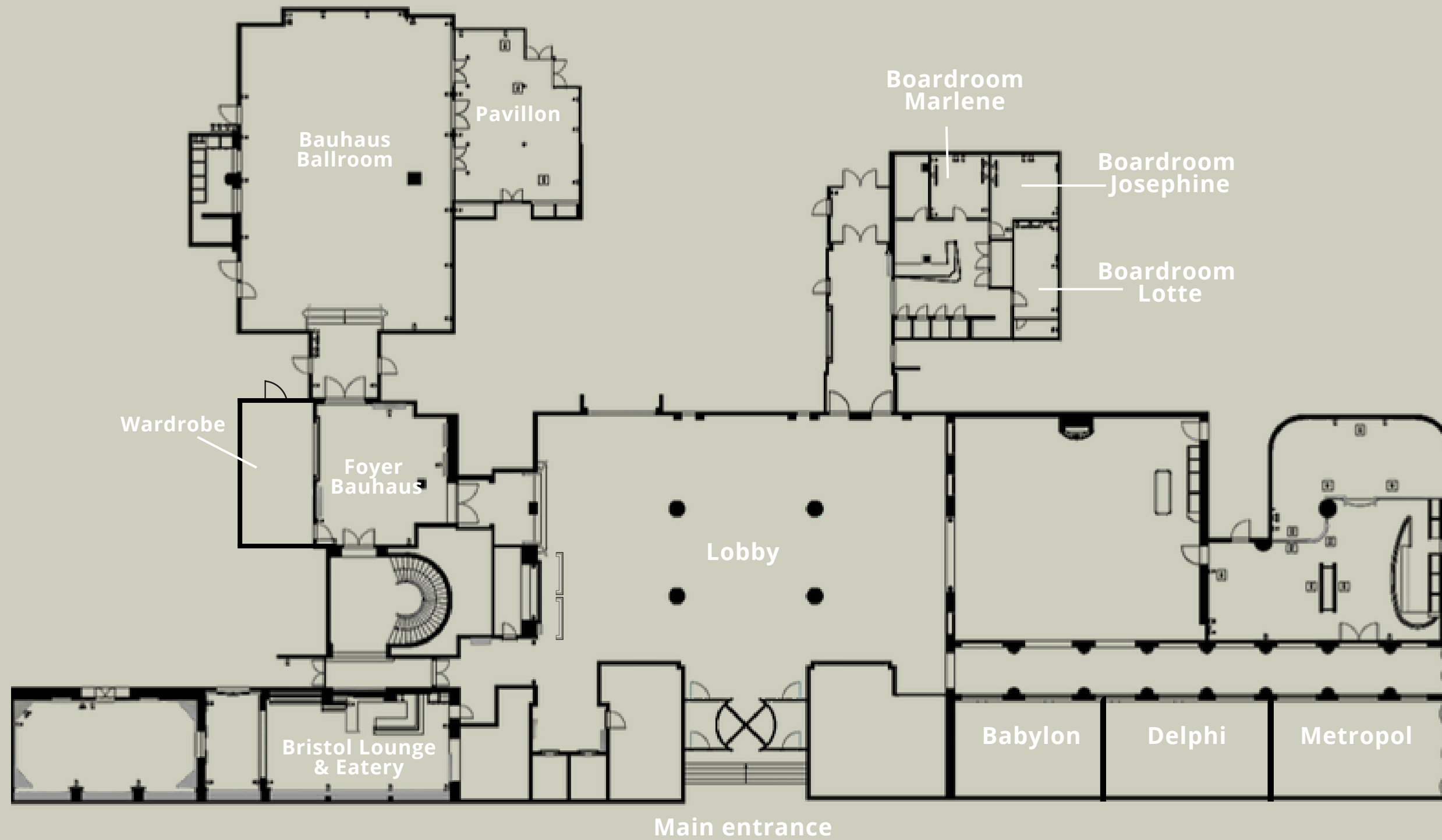
MEETING & BANQUET ROOMS

[MEETING & BANQUET ROOMS](#) | [CONFERENCE & EVENTS](#) | [ACCOMODATION](#) | [FOOD & DRINKS](#) | [GYM & SPA](#) | [OVERALL INFORMATION](#)

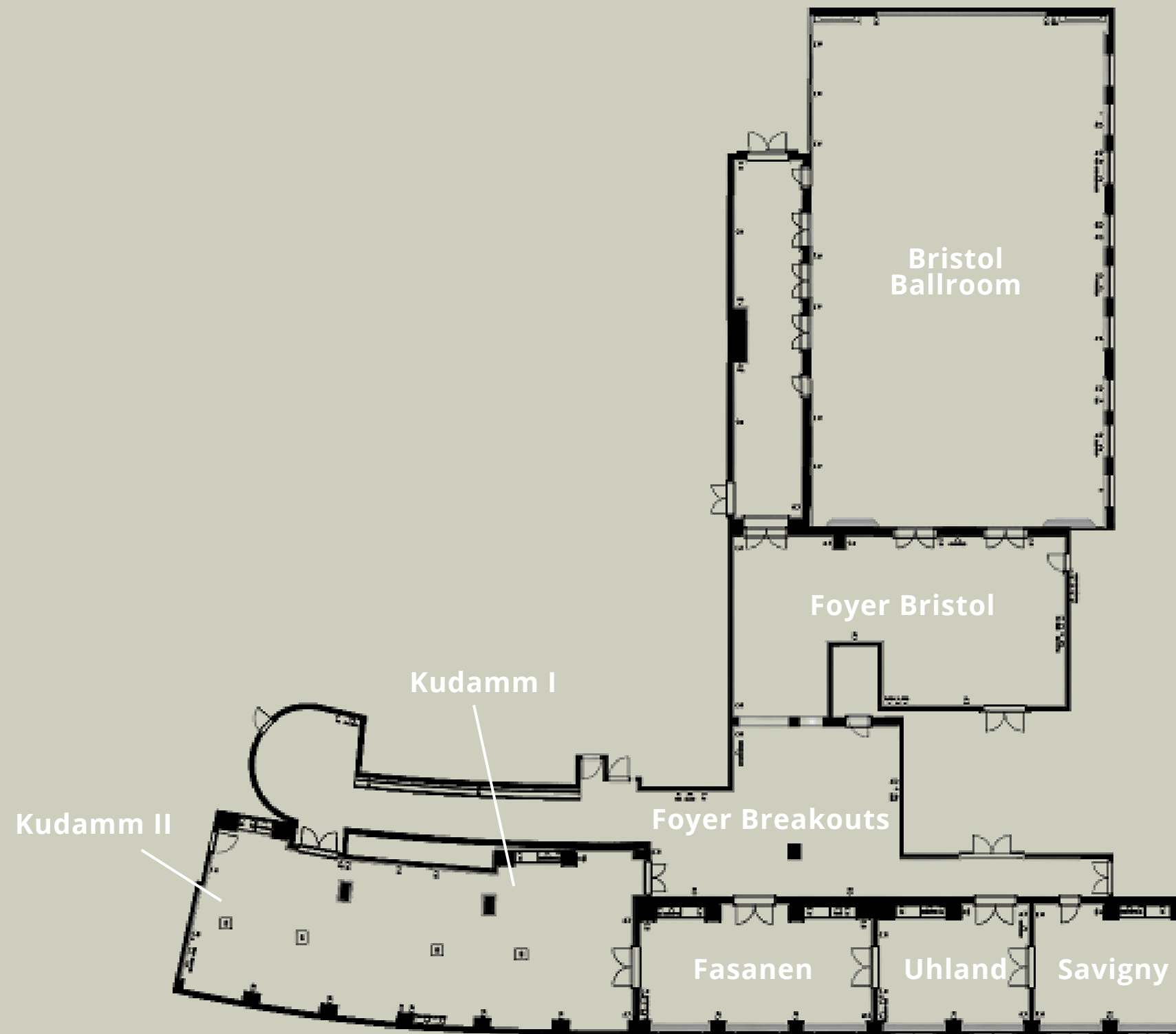
Overview

Meeting Room	Floor	Size (m ²)	Height (m)	Length (m)	Width (m)	Theater	Parliamentary	Cabarett	Banquet	Cocktail	Block	U-Shape
Boardroom Marlene	GF	13–15	coming soon	coming soon	coming soon	–	–	–	–	–	–	–
Boardroom Josephine	GF	13–15	coming soon	coming soon	coming soon	–	–	–	–	–	–	–
Boardroom Lotte	GF	13–15	coming soon	coming soon	coming soon	–	–	–	–	–	–	–
Private Dining Room Babylon	GF	13–15	coming soon	coming soon	coming soon	–	–	–	–	–	–	–
Private Dining Room Delphi	GF	13–15	coming soon	coming soon	coming soon	–	–	–	–	–	–	–
Private Dining Room Metropol	GF	13–15	coming soon	coming soon	coming soon	–	–	–	–	–	–	–
Savigny	1st floor	40	3,1	7,13	5,4	25	18	12	20	25	16	15
Uhland	1st floor	40	3,1	7,1	5,4	25	18	12	20	25	16	15
Fasanen	1st floor	60	3,1	10,7	5,4	40	30	18	30	35	30	27
Kudamm I	1st floor	83	3,1	10,4	7,95	40	24	18	30	35	30	21
Kudamm II	1st floor	83	3,1	10,5	7,95	40	24	24	40	50	22	21
Kudamm I + Kudamm II	1st floor	166	3,1	20,9	7,95	84	50	48	80	120	48	44
Bauhaus Ballroom	GF	230	3	12,67	18,64	130	84	54	120	220	50	40
Pavillon (Bauhaus Ballroom)	GF	73	3	7,34	10,05	–	–	–	30	50	–	–
Bristol Ballroom	1st floor	330	4,4	23,8	13,85	300	200	132	200	500	82	70

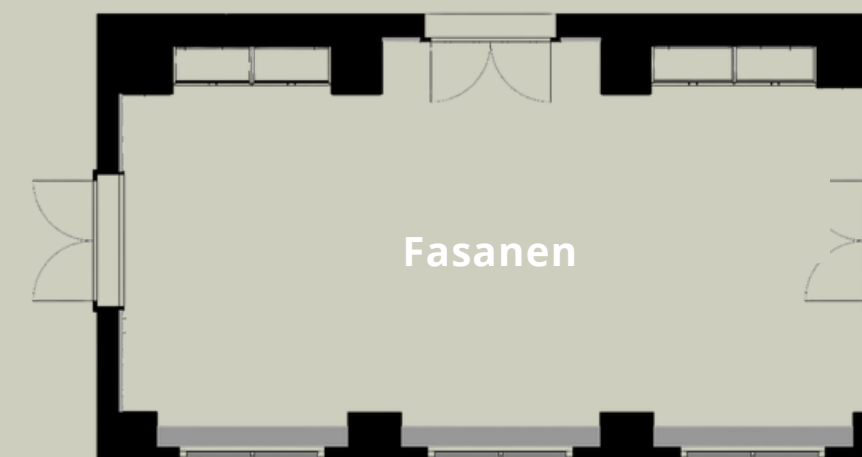
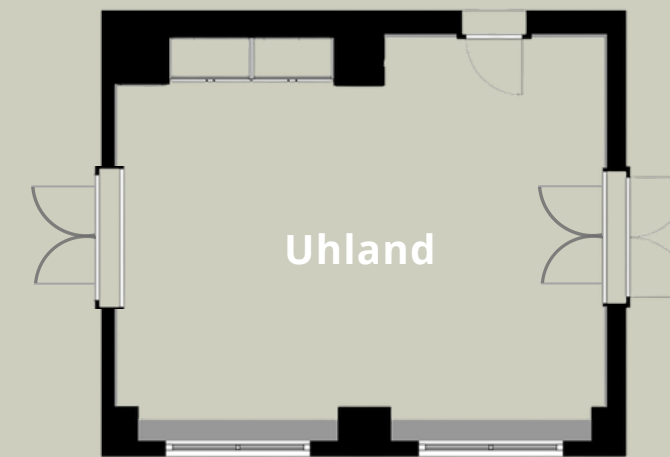
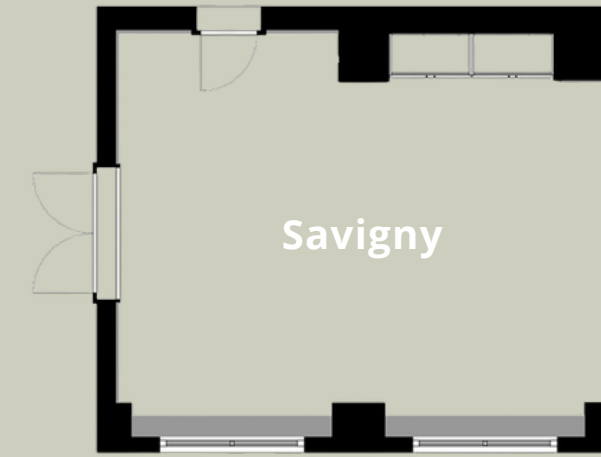
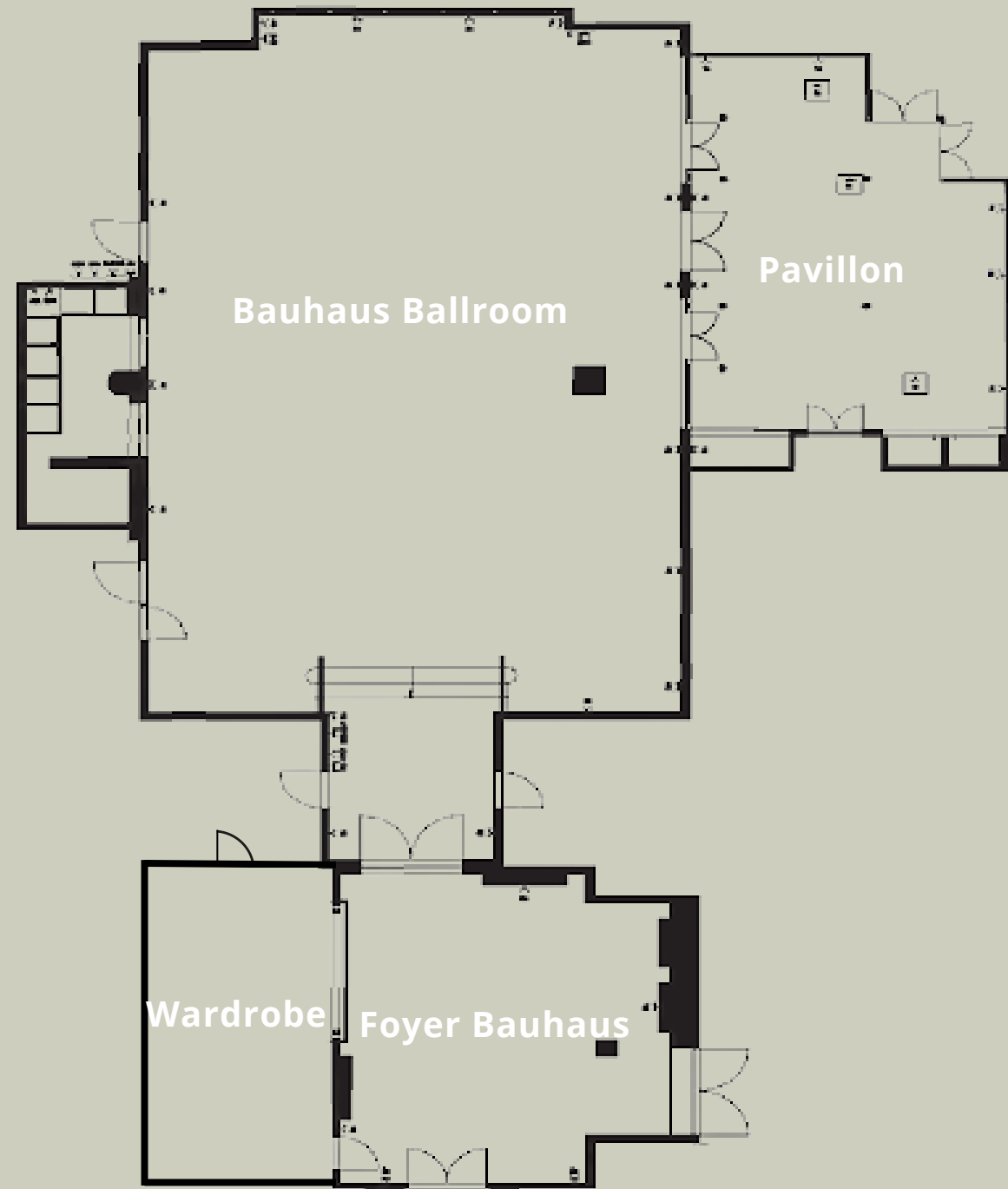
Outline - Ground floor



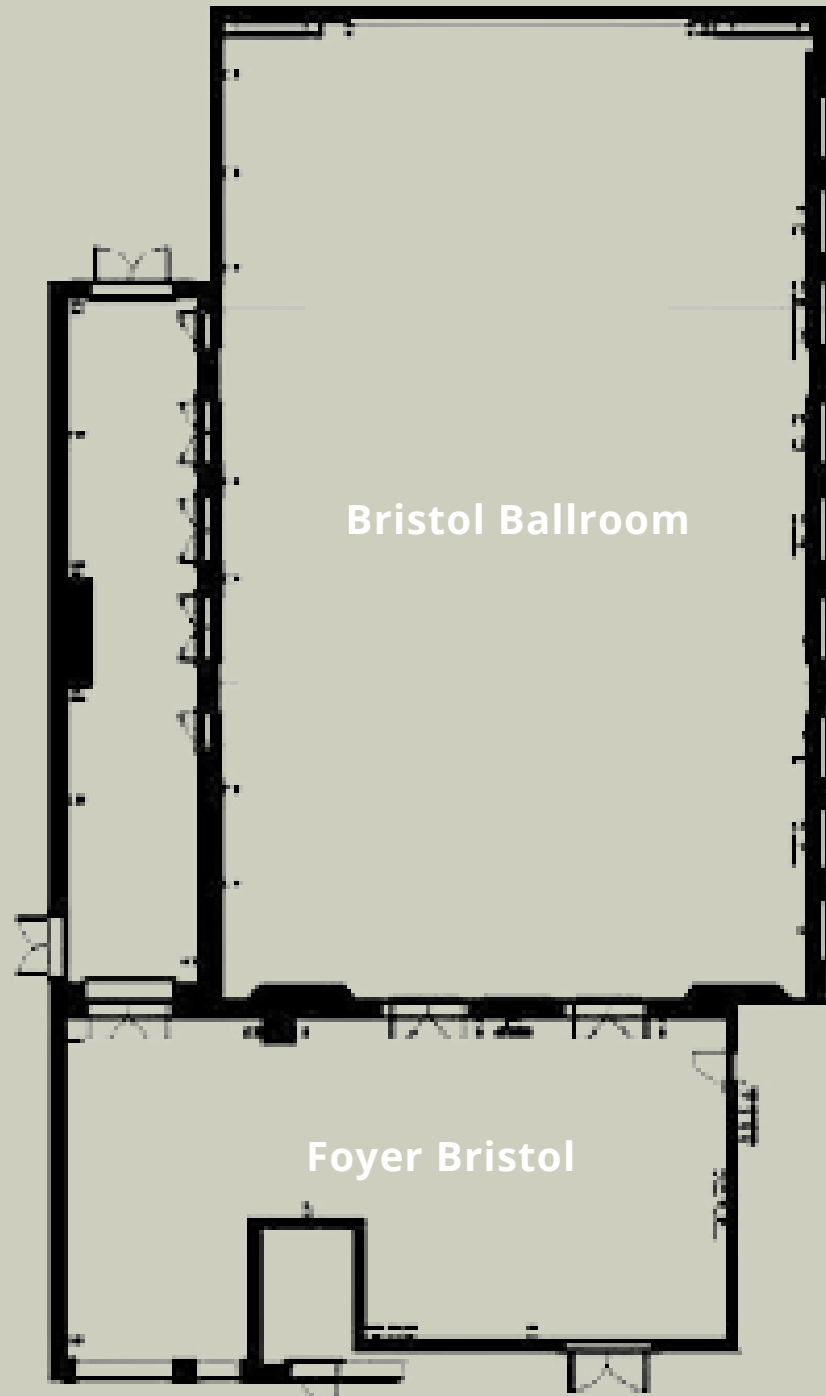
Outline - 1. Floor



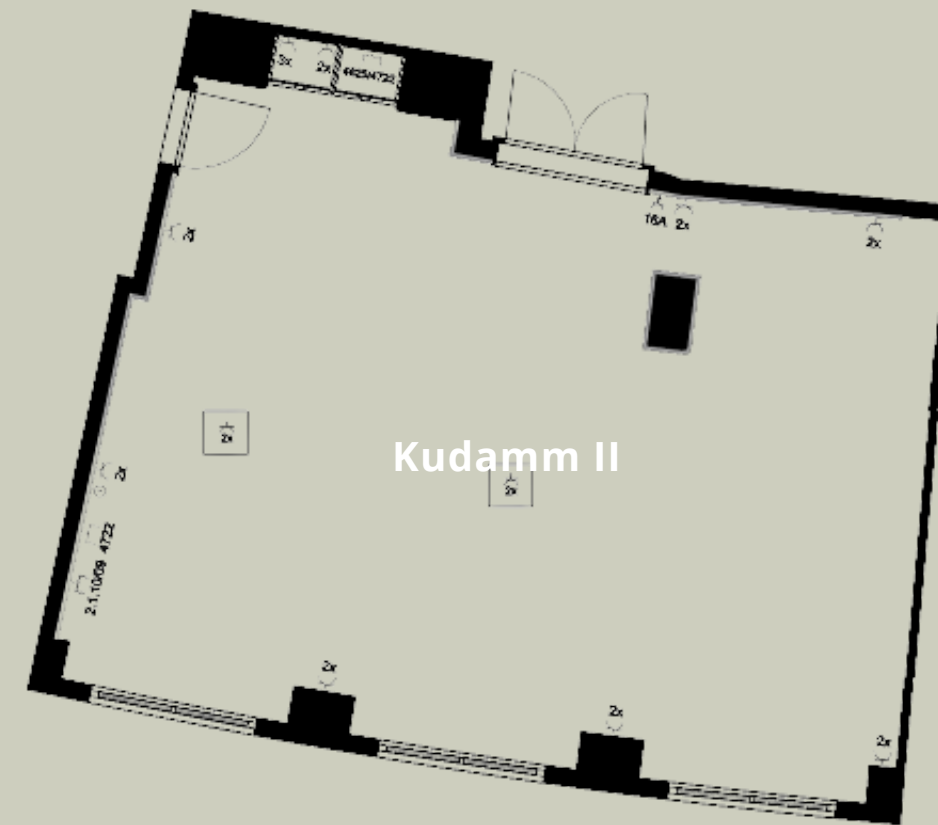
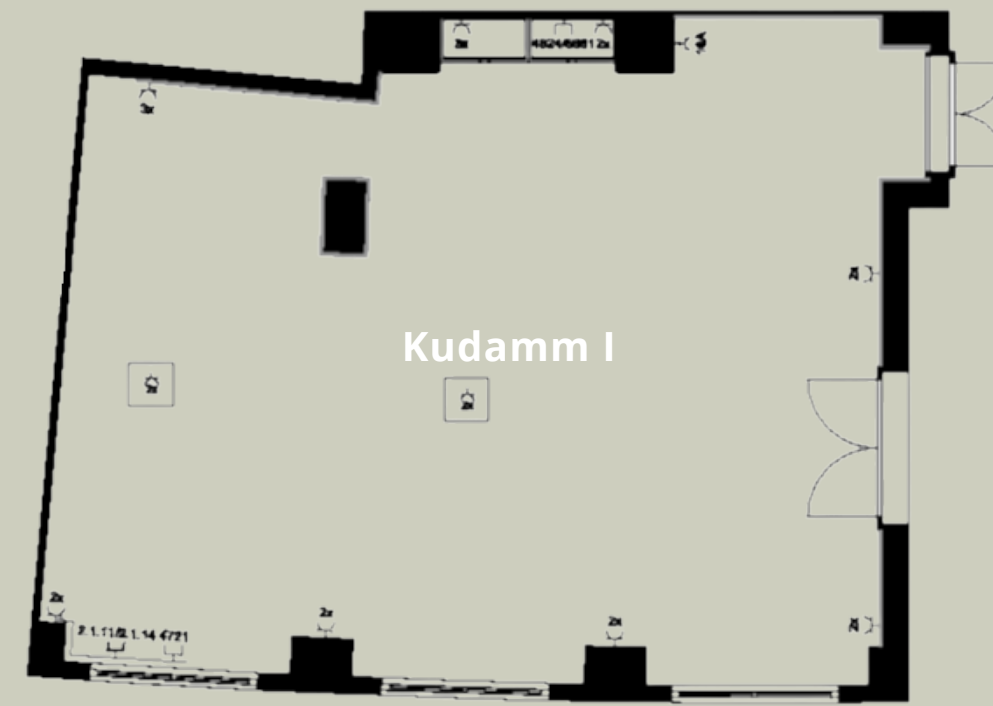
Bauhaus Ballroom & Pavillon Savigny, Uhland & Fasanen



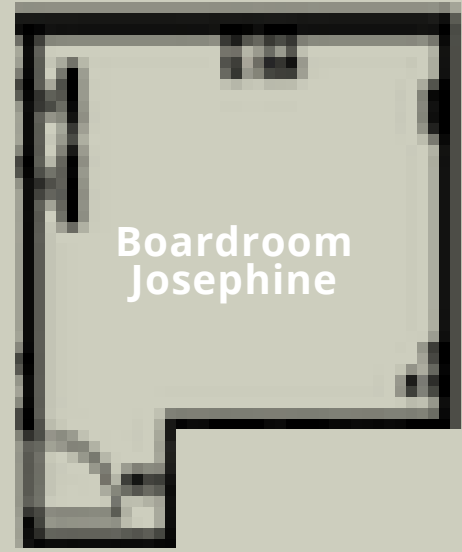
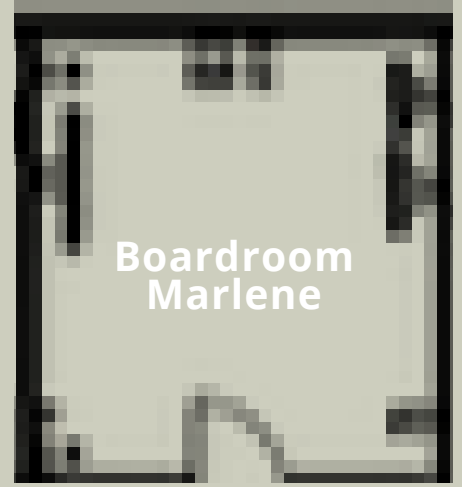
Bristol Ballroom & Foyer



Kudamm I & Kudamm II



Boardrooms



Private Dining Rooms



Private Dining Room (Design Rendering)

Renovation 2026

Private Dining Room



Private Dining Room



Bristol Ballroom



Bauhaus Ballroom



Private Dining Room



CONFERENCE & EVENTS

Daily delegate rate

The following services are always included as standard in our conference packages in your main conference room:

- Room rental upon reaching the minimum number of participants
- Signage featuring your logo
- Conference technology including 1 standard projector with screen, 1 flipchart or pinboard, notepads and pens
- Unlimited meeting beverages (Purezza still water, apple and orange juice)
- Coffee break (max. 30 min) with a selection of coffee & tea, accompanied by 2 chef's choice delicacies

Below you will find our packages options:

	Basic	Standard	Business	Superior
Welcome Coffee with a selection of coffee & tea			X	
Snack lunch featuring a 2-course menu or chef's choice buffet, inclusive of coffee and tea	X			
Standard lunch featuring a 3-course menu or chef's choice buffet, inclusive of coffee and tea		X	X	X
Dinner featuring a menu or chef's choice buffet and a 2-hour beverage package inclusive of house wine, beer, soft drinks, coffee and tea				X
Full day with 2 coffee breaks	EUR 95.00	EUR 102.00	EUR 112.00	EUR 189.00
Half day with 1 coffee break	EUR 83.00	EUR 90.00	EUR 100.00	EUR 177.00

Food & Beverages



Choose your desired menu from our various suggestions or create your own menu from individual dishes. The culinary design of your event is entirely up to you.

You can choose between creative dishes with international flair, regional specialties, or thematic presentations.

Upon request, our chef will gladly accommodate any dietary restrictions.

You can complement the menus with the following beverage packages*:

Soft drinks, coffee, and tea

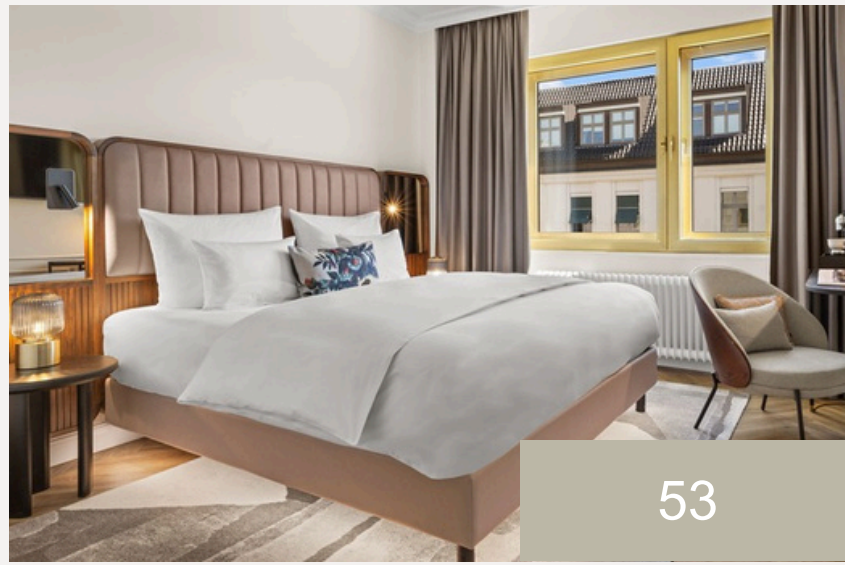
House wine, beer, soft drinks, coffee, and tea

Sparkling wine, house wine, beer, soft drinks, coffee, and tea

*Each package is available for three or four hours.

Discover the charm of our 303 newly renovated rooms, which offer a mix of modernity and elegance.

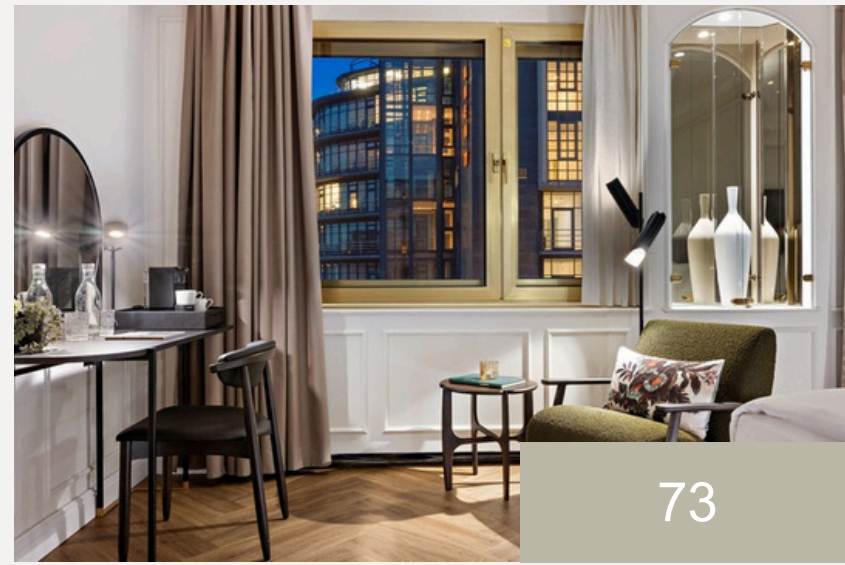
ACCOMMODATION



53

King Cozy

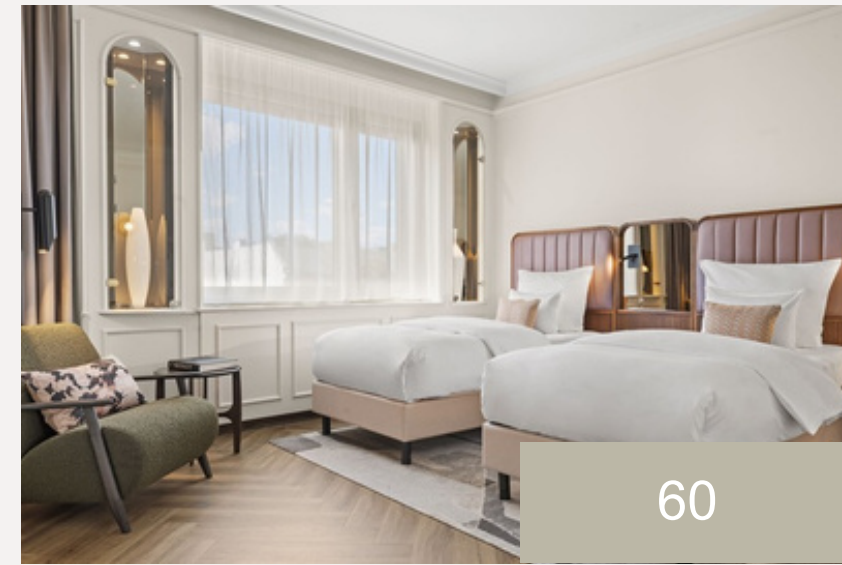
sq. m.	20 - 21
occupancy	1 - 2 guests
equipment	1 king size bed



73

King Deluxe

sq. m.	21 - 24
occupancy	1 - 2 guests
equipment	1 king size bed



60

Twin Deluxe

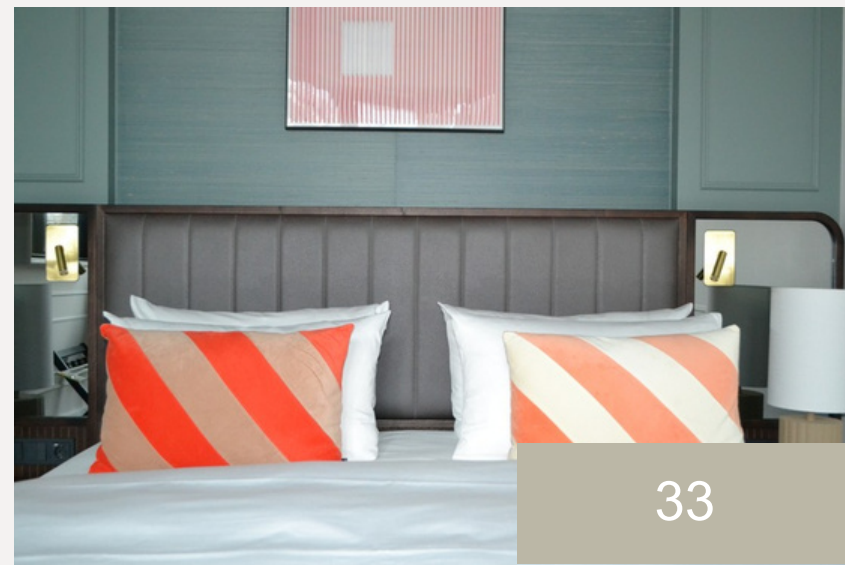
sq. m.	20-31
occupancy	1 - 2 guests
equipment	2 twin beds



26

King Premium

sq. m.	25 - 30
occupancy	1 - 2 guests
equipment	1 king size bed



33

King Grand

sq. m.	30
occupancy	1 - 3 guests
equipment	1 king size bed + sofa bed



25

King Suite

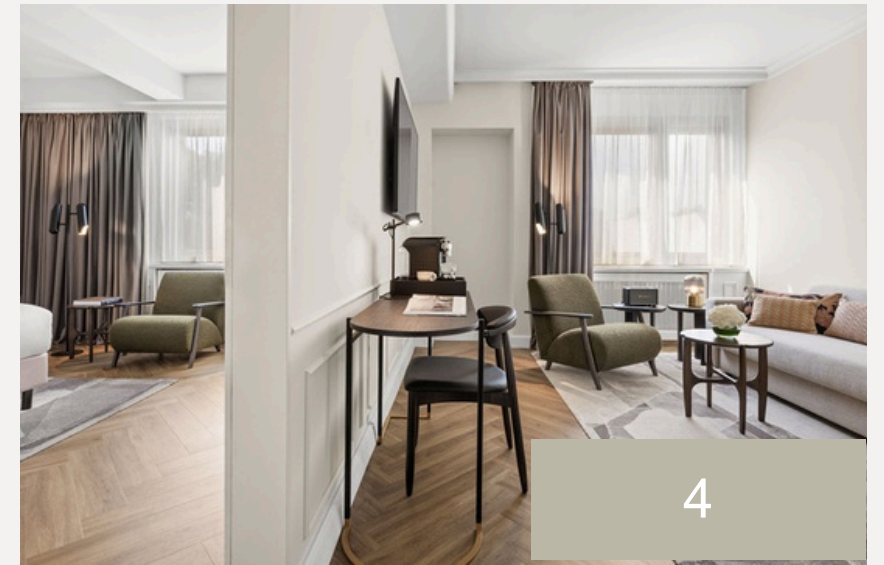
sq. m.	46
occupancy	1 - 3 guests
equipment	1 king size bed + sofa bed + living area + balcony



17

Bedroom Suite

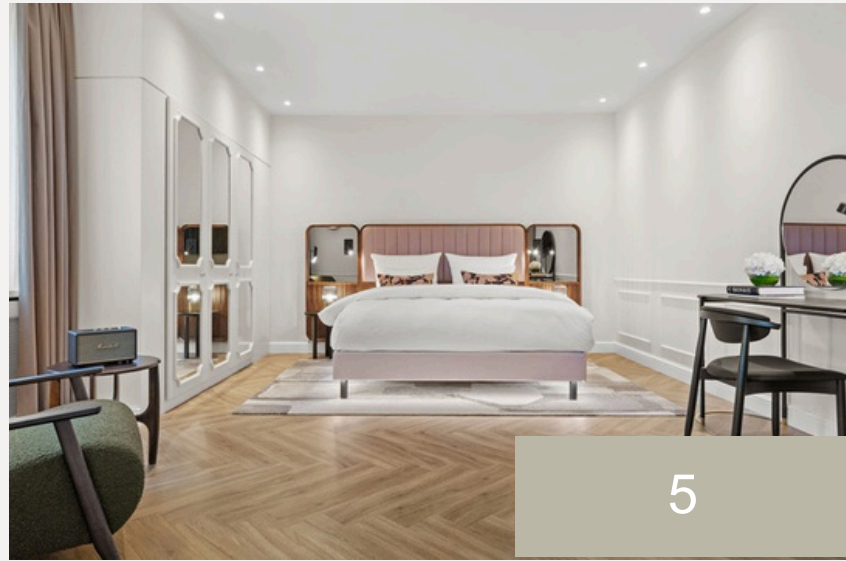
sq. m.	39 - 40
occupancy	1 - 3 guests
equipment	1 king size bed + sofa bed + living area



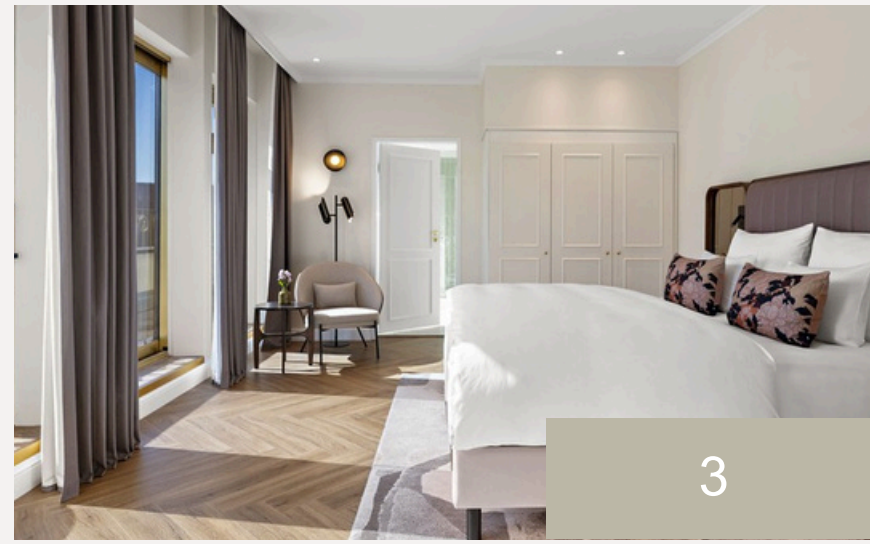
4

Courtyard Suite

sq. m.	53
occupancy	1 - 3 guests
equipment	1 king size bed + sofa bed + living area



5



3



under renovation



under renovation

Family Suite

sq. m.	60
occupancy	1 - 4 guests
equipment	1 king size bed + sofa bed + living area

Balcony Suite

sq. m.	50 - 55
occupancy	1 - 3 guests
equipment	1 king size bed + sofa bed + living area + balcony

Berlin Suite

sq. m.	75
occupancy	
equipment	

Tower Suite

sq. m.	113
occupancy	
equipment	

AMENITIES

- Complimentary bottled water per stay
- Spacious rooms with classic, elegant design, some with private balconies and views of Kurfürstendamm
- Air conditioning and high-speed Wi-Fi
- Coffee machine and refrigerator
- In-room safe
- Marble bathrooms with bathtub or shower
- Bathrobes, slippers, and premium toiletries
- Some rooms and suites with private balconies and views of Kurfürstendamm



FOOD & DRINKS

New Lobby Lounge



Vitis West Café & Wine Hub - Berlin's new address for wine & indulgence at the Hotel Bristol

With Vitis West Café & Wine Hub, the Hotel Bristol Berlin presents a new address for stylish indulgence in the heart of Berlin West.

Inspired by the Latin word for “vine”, Vitis West combines wine, cuisine and urban lifestyle in an atmosphere that is elegant, modern and relaxed at the same time. This is where cosmopolitan travelers, Berlin connoisseurs and business guests meet – in a space that combines design, craftsmanship and hospitality in a special way.

just a pop up



just a pop up

With its innovative concept and view of the bustling Ku'damm, "just a pop up" offers a special culinary experience. Here, authentic flavors meet contemporary preparation and classic craftsmanship. The restaurant is also characterized by its pop-up character: Guests are surprised with changing offers for a limited time. The menu includes new interpretations of fish & chips, asparagus and clafoutis as well as classics such as beef tartare and Wiener schnitzel.

GYM & SPA

Gym

More than just a place to work out

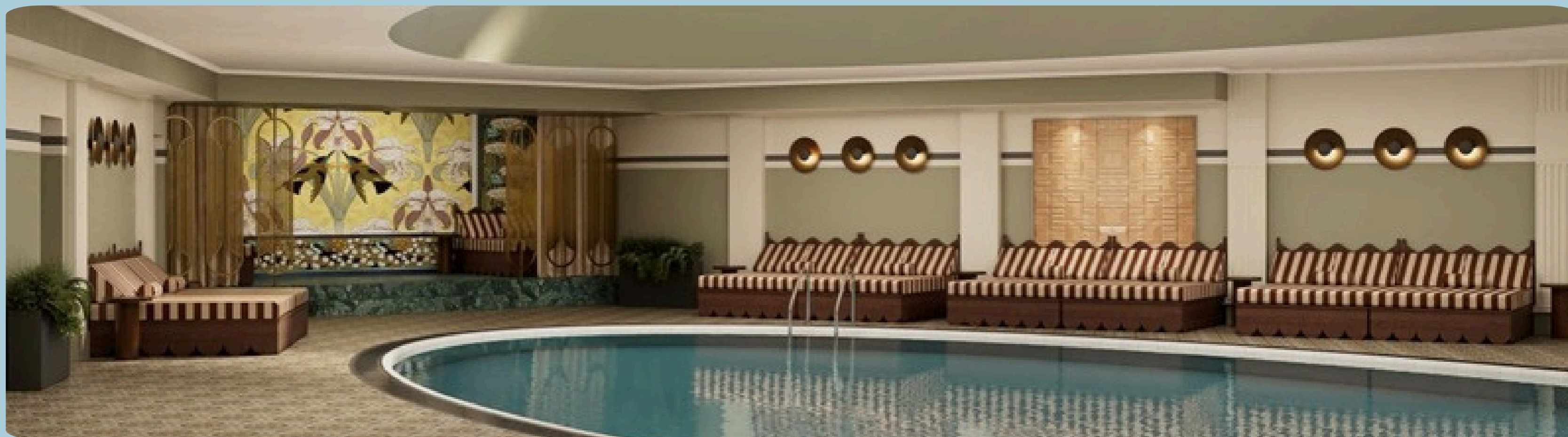
Our new gym offers numerous amenities for your well-being. On over 190 m² you will find a multifunctional weight bench, interactive upright bikes, treadmills, bumbbells and much more. A yoga and stretching area rounds off your holistic fitness program.

Our newly opened fitness studio with high-quality TechnoGym™ equipment is at your disposal around the clock.

Opening hours: 24 hours a day



Spa



Dive into the 18m long, 8m wide pool, relax in the 29°C water under a panoramic roof.

Finnish sauna - temperature: approx. 85°C. Special features: wooden paneling, stone oven, free scents for infusions.

Steam bath - temperature: approx. 45°C. Special features: cladding with marble tiles, free scents for infusions.

OVERALL INFORMATION

Contact

Group & Event Department
E-Mail: meetings.bristolberlin@ihg.com
Tel.: +49-30-8843-4833

Reservations Department
reservations.bristolberlin@ihg.com
Tel.: +49-30-8843-4704

Hotel Bristol Berlin
Kurfürstendamm 27
10719 Berlin

Tel.: +49-30-884340

HOTEL
BRISTOL BERLIN
1952 ONWARDS