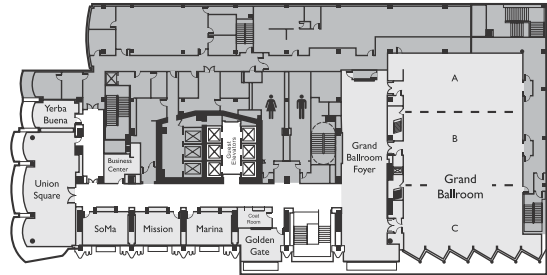
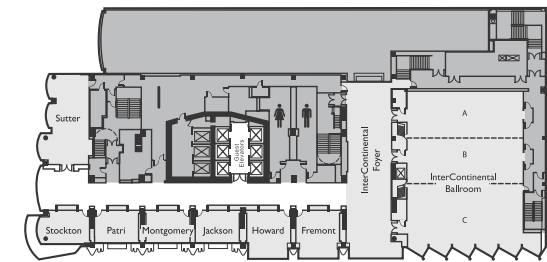


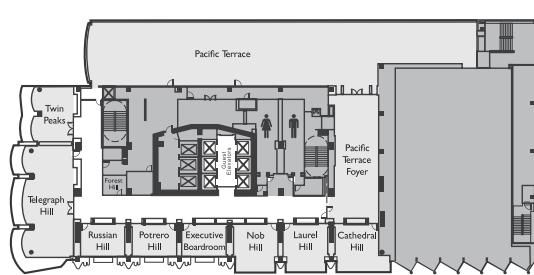
THIRD FLOOR



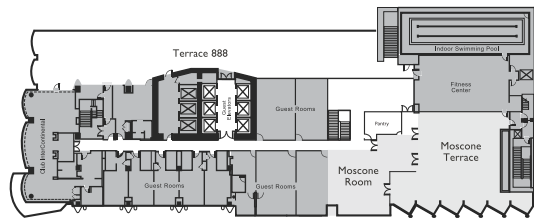
FIFTH FLOOR



FOURTH FLOOR



SIXTH FLOOR



THE HOTEL

The InterContinental San Francisco, a gleaming tower of cool blue, rises above the city's most vibrant downtown neighborhood. Modern architecture and ingrained state-of-the-art technological features are seamlessly integrated with an intimate interior. Our central location means you will be adjacent to Moscone Convention Center, steps from the renowned restaurants and bars of the eclectic South of Market district and minutes away from the financial district, world class shopping, cultural and sightseeing venues.

A BREATH OF FRESH AIR

PRESENTING OUR THREE OUTDOOR TERRACES, FOR YOUR NEXT MEETING OR EVENT

PACIFIC TERRACE



- 6,800 square feet tented space
- Removable side panels for fresh air circulation
- Market lights strung throughout for ambient lighting

TERRACE 888

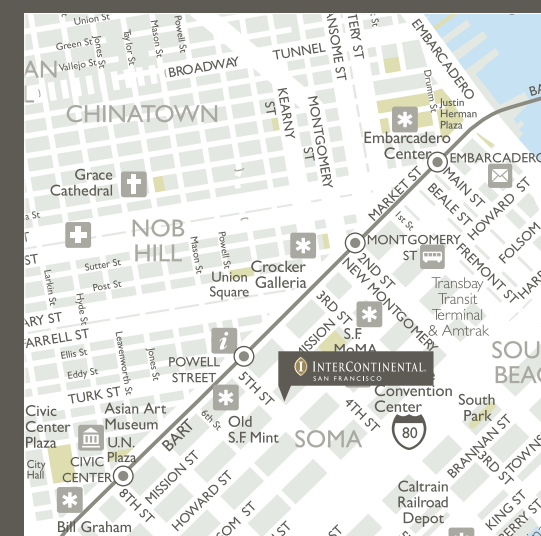


- 5,406 square feet
- Low dining tables and lounge chairs, including picnic-style seating
- Features a heated sofa and chair set
- Patio umbrellas throughout

MOSCONE ROOM & TERRACE



- 1,400 square feet of indoor space
- 2,800 square foot tented terrace
- Indoor and outdoor capability
- Outdoor seating with 2 fire pits



InterContinental San Francisco
888 Howard Street San Francisco CA 94103
Tel: +1 415 616 6500 Fax: +1 415 616 6581
icsfsales@ihg.com
www.icsanfrancisco.com

SAN FRANCISCO

InterContinental Meetings are designed to capture a genuine sense of place that will inspire delegates and get results. Our experienced team understands the demands on your time as a busy event planner and is focused on making sure that the process runs seamlessly at every stage. Whatever the event, the InterContinental Meetings team is here to make life easier for you and to create a rewarding occasion for those attending.

HOTEL FACILITIES

InterContinental San Francisco is the most technologically advanced hotel in San Francisco, from cutting-edge conference technology to the latest in room occupancy monitoring. Each system is designed to provide our guests with an unparalleled experience.

All 556 guestrooms, including 14 suites, have a distinctly modern feel featuring natural wood and marble finishes, large working areas, flat-screen televisions and breathtaking cityscapes afforded by floor-to-ceiling windows.

A PERSONAL RESPONSIVE SERVICE

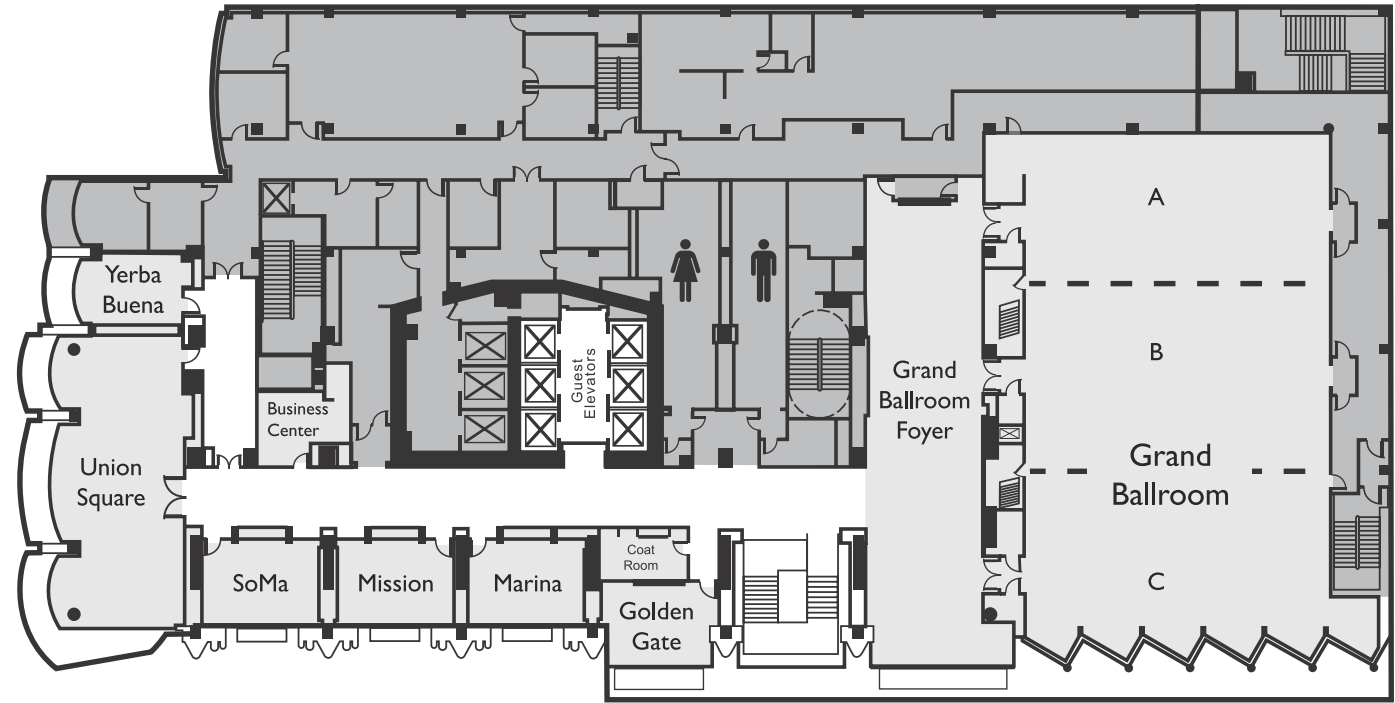
For dining, entertainment and relaxation, InterContinental San Francisco offers as many options for staying in as the city does for going out. Exquisite dining is offered at Luce, where each dish showcases local, organic and sustainable ingredients perfectly married with global influences and flavors. Experience tantalizing cocktails and gourmet bar fare at Bar 888. Casual dining with a local flair is available at Bistro 888. Take advantage of our 24-hour fitness center or enjoy a dip in our outdoor lap-pool.

MEETINGS AND EVENTS

To us, it's all about matching our execution with your expectations. Our event facilities are spread over three expansive floors, consisting of two major customizable ballrooms and 23 smaller meeting rooms of varying sizes. All meeting rooms have natural light pouring in through floor-to-ceiling windows, setting a new standard for what an event can, and should be.

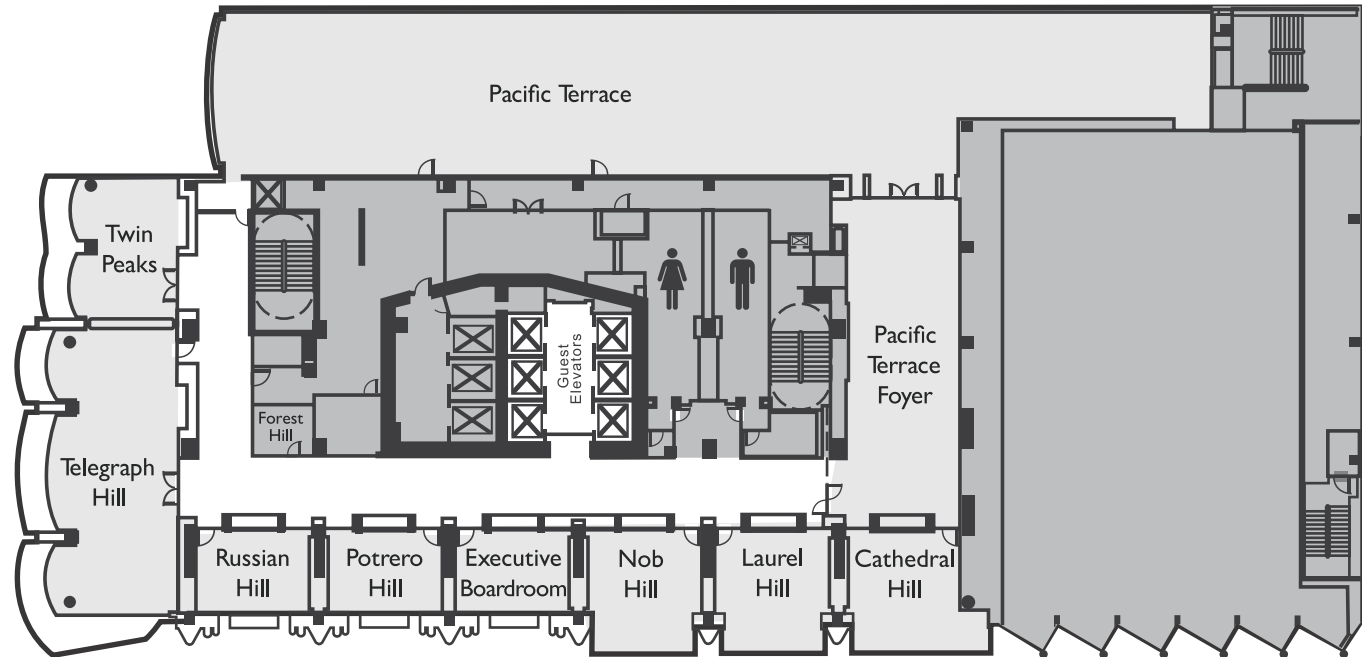
InterContinental Meetings are delivered by a highly-trained team focused on understanding your needs and staging an event that is tailored to you. Every element of our service and technology is designed to simplify the event-planning process, from fast availability checks and transparent pricing to the latest technology tools such as virtual tours and fully-interactive floor plans that can be customized to each event.

THIRD FLOOR



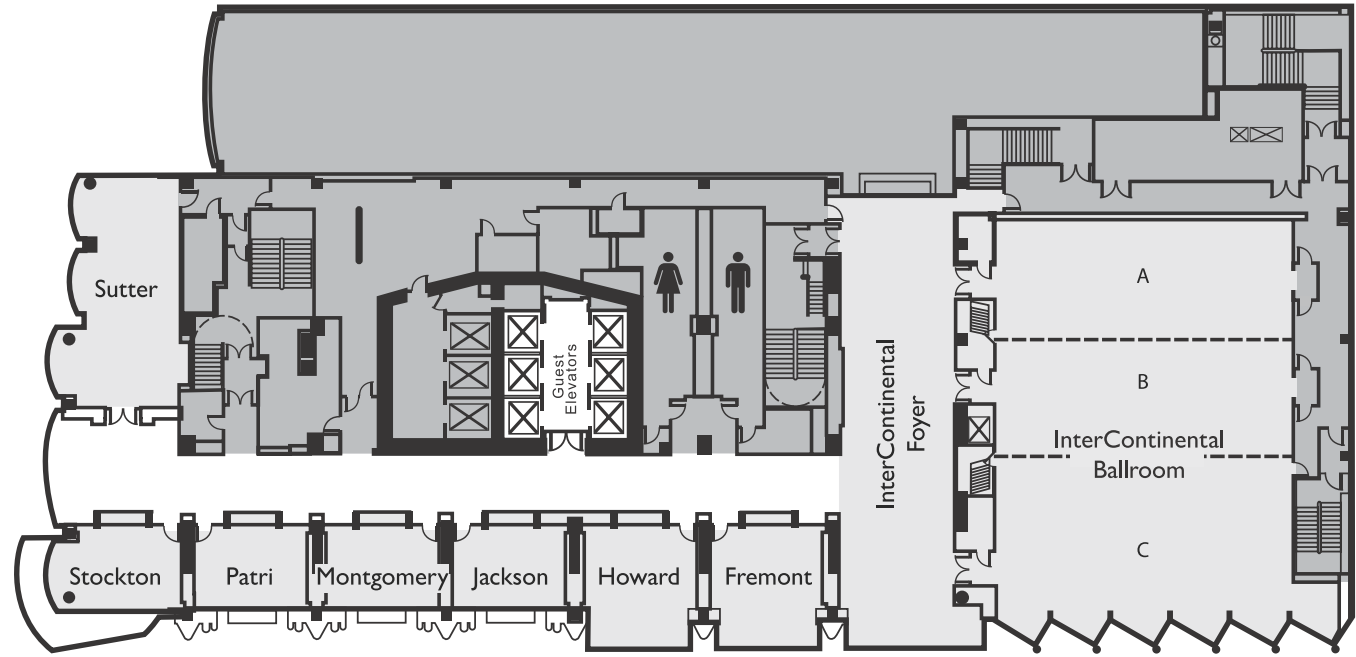
Room	Theater Style	Classroom	Cocktail Reception	Banquet	U-Shape	Hollow Square	Size (sq. ft.)	Length x Width (ft.)	Height (ft.)	Floor
Grand Ballroom	840	405	1000	540	119	118	6800	103 x 63	17.5	3
Grand Ballroom A	208	126	200	150	54	58	1890	30 x 63	17.5	3
Grand Ballroom A & B	468	252	575	360	78	88	4253	67.5 x 63	17.5	3
Grand Ballroom B	260	126	300	180	62	70	2363	37.5 x 63	17.5	3
Grand Ballroom B & C	488	252	600	360	80	94	4600	73 x 63	17.5	3
Grand Ballroom C	228	126	250	180	62	70	2237	35.5 x 63	17.5	3
Grand Ballroom Foyer	-	-	270	-	-	-	2350	94 x 24	9.5	3
Golden Gate	28	12	-	20	18	22	328	20.5 x 16	10	3
Marina	40	24	-	30	22	24	408	24 x 17	10	3
Mission	40	24	-	30	22	24	408	24 x 17	10	3
SoMa	40	24	-	30	22	24	408	24 x 17	10	3
Union Square	143	78	150	100	50	58	1577	59.5 x 26.5	10	3
Yerba Buena	24	18	-	20	17	22	319	14.5 x 22	10	3

FOURTH FLOOR



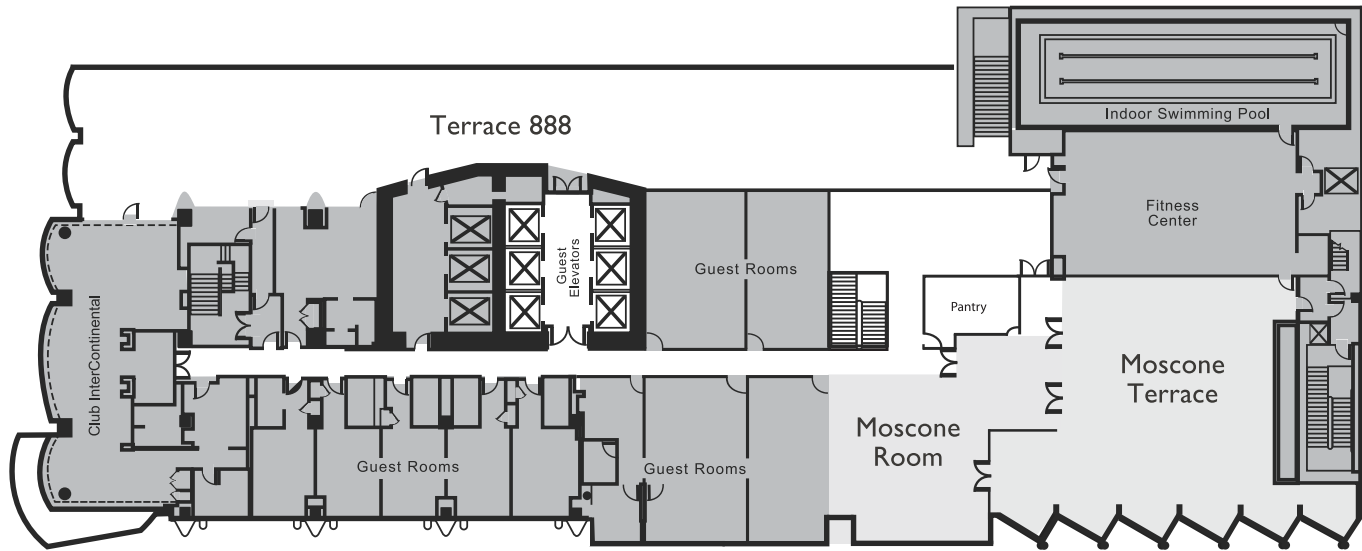
Name of Room	Theater Style	Classroom	Cocktail Reception	Banquet	U-Shape	Hollow Square	Size (sq. ft.)	Length x Width (ft.)	Height (ft.)	Floor
Pacific Terrace	400	-	773	330	-	-	5406	159 x 34	-	4
Pacific Terrace Foyer	-	-	150	-	-	-	1584	66 x 24	9.5	4
Cathedral Hill	55	33	-	40	26	28	600	24 x 25	10	4
Laurel Hill	55	33	-	40	26	28	600	24 x 25	10	4
Nob Hill	55	33	-	40	26	28	600	24 x 25	10	4
Potrero Hill	40	21	-	30	22	24	408	17 x 24	10	4
Russian Hill	40	21	-	30	22	24	408	17 x 24	10	4
Telegraph Hill	143	78	150	100	50	58	1577	59.5 x 26.5	10	4
Twin Peaks	66	21	-	40	-	-	682	29 x 23.5	10	4
Executive Boardroom	-	-	-	-	-	-	408	24 x 17	10	4
Forest Hill	-	-	-	-	-	-	-	Office	10	4

FIFTH FLOOR



Name of Room	Theater Style	Classroom	Cocktail Reception	Banquet	U-Shape	Hollow Square	Size (sq. ft.)	Length x Width (ft.)	Height (ft.)	Floor
InterContinental Ballroom	707	306	800	480	92	100	5600	83 x 62.5	10	5
InterContinental Ballroom A	200	90	170	120	66	52	1563	25 x 62.5	10	5
InterContinental Ballroom A & B	410	189	300	240	74	88	3063	49 x 62.5	10	5
InterContinental Ballroom B	200	90	170	120	66	52	1500	24 x 62.5	10	5
InterContinental Ballroom B & C	433	216	400	300	74	88	3625	58 x 62.5	10	5
InterContinental Ballroom C	238	126	250	170	70	64	2125	34 x 62.5	10	5
InterContinental Ballroom Foyer	-	-	270	-	-	-	2256	94 x 24	13	5
Fremont	55	27	-	40	26	28	600	24 x 25	13	5
Howard	55	27	-	40	26	28	600	24 x 25	13	5
Jackson	40	24	-	30	22	24	408	24 x 17	10	5
Montgomery	40	24	-	30	22	24	408	24 x 17	10	5
Patri	40	18	-	30	22	24	408	24 x 17	10	5
Stockton	42	18	-	30	22	24	476	28 x 17	13	5
Sutter	110	36	100	80	44	52	1104	48 x 23	13	5

SIXTH FLOOR



Name of Room	Theater Style	Classroom	Cocktail Reception	Banquet	U-Shape	Hollow Square	Size (sq. ft.)	Length x Width (ft.)	Height (ft.)	Floor
Terrace 888	-	-	460	-	-	-	-	184 x 28	-	6
Moscone Room	50	18	80	50	15	20	1400	-	-	6
Moscone Terrace	-	-	120	50	-	-	2797	-	-	6
Moscone Room & Terrace	40	-	200	100	-	-	4197	58 x 53	-	6

