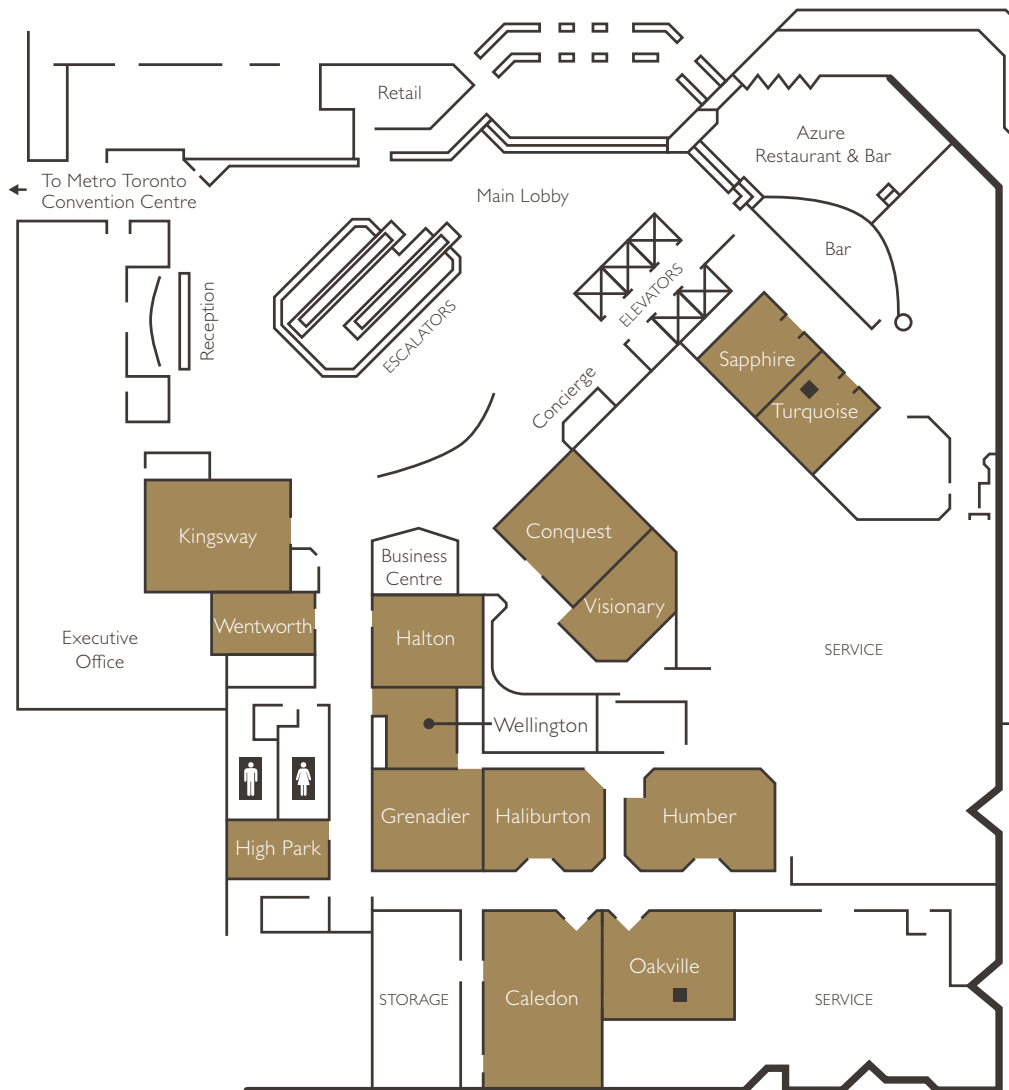




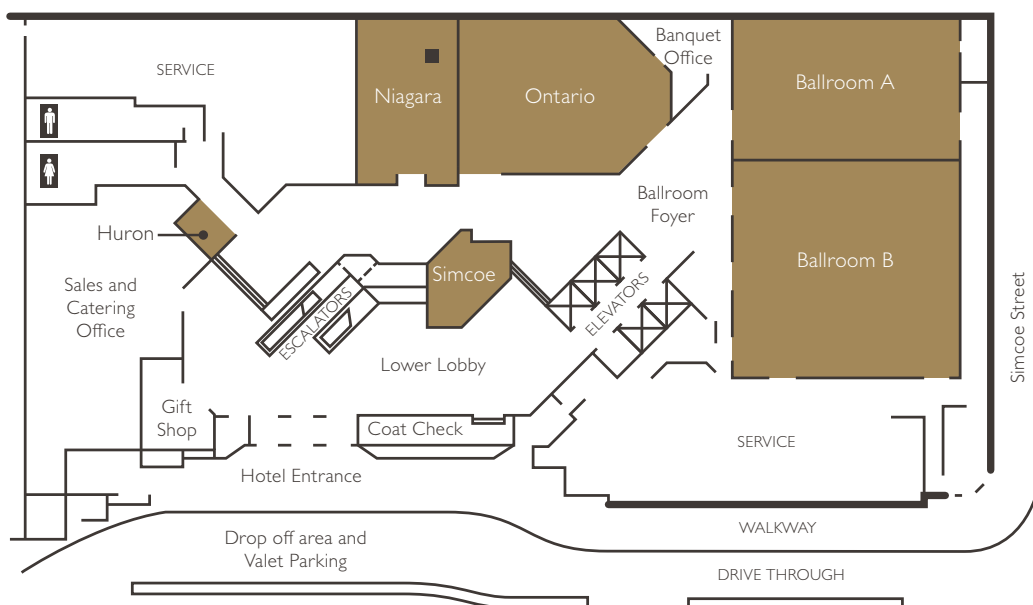
TORONTO











InterContinental® Meetings are designed to capture a genuine sense of place that will inspire delegates and get results. Our experienced team understands the demands on your time as a busy event planner and is focused on making sure that the process runs seamlessly at every stage. Whatever the event, the InterContinental meetings team is here to make life easier for you and to create a rewarding occasion for those attending.

CONFERENCE CENTRE
UPPER LEVEL



LOWER LEVEL



Name of Room										
	Banquet	Theatre	Classroom	Reception	Boardroom	U-Shape	Hollow Square	Dimensions (Sq Ft)	Area (Sq Ft)	Height

UPPER LEVEL

Kingsway	50	80	45	65	26	24	30	36x25	900	10'
Wentworth	20	20	12	20	12	–	–	23x15	345	9'6"
High Park	20	20	12	20	12	12	15	25x15	375	9'6"
Halton	40	45	18	45	15	18	24	26x24	624	9'6"
Wellington	20	35	15	30	12	15	18	22x19	418	9'6"
Grenadier	40	45	18	45	15	18	24	26x24	624	9'6"
Haliburton	50	60	24	60	20	24	28	32x25	800	9'6"
Humber	50	65	30	60	22	24	30	35x24	840	9'6"
Caledon	70	120	51	100	30	33	38	45x29	1305	10'
Oakville	50	60	36	60	20	18	24	35x25	875	10'
Caledon & Oakville combined	120	130	60	175	–	–	–	64x45	2180	11'11"
Conquest Boardroom	–	–	–	–	22	–	–	32x31	925	11'11"
Visionary Boardroom	–	–	–	–	20	–	–	29x18	605	11'11"
Sapphire (Private Dining Room)	20	–	–	35	–	–	–	29*x17	493	11'11"
Turquoise (Private Dining Room)	20	–	–	35	–	–	–	29x18	522	11'11"
Sapphire & Turquoise combined	50	–	–	70	–	–	–	29x35	1015	11'11"

LOWER LEVEL

Ballroom A	170	250	120	200	–	42	54	60x39	2340	9'11"
Ballroom B	220	350	192	300	–	51	60	60x57	3420	9'11"
Ballroom A & B combined	420	600	288	600	–	–	–	60x96	5760	9'11"
Simcoe	20	20	10	–	12	–	–	21x17	357	9'6"
Ontario	120	150	84	200	30	39	48	53x38	2014	9'6"
Niagara	50	70	45	70	24	24	30	29x38	1102	9'6"
Ontario & Niagara combined	190	220	120	300	–	–	–	82x38	3116	9'6"
Huron*	–	–	–	–	–	–	–	9.25"x13"	120	9'10"

Capacity chart includes allowance for standard audio visual equipment. *Office.

INTERCONTINENTAL MEETINGS®



THE HOTEL

Experience the vibrant energy of downtown Toronto, when you stay at the 4-Diamond InterContinental® Toronto Centre. Attached to the Metro Toronto Convention Centre and just steps away from the CN Tower, Air Canada Centre, Rogers Centre and Ripley's Aquarium of Canada, our upscale hotel offers the perfect combination of contemporary elegance, luxurious comfort and modern convenience right in the heart of the city.

HOTEL FACILITIES

Discover 584 spacious guestrooms and suites featuring breathtaking lake and city skyline views. Our Club InterContinental accommodations exemplify high-style and are perfect for the business-minded traveller. Enjoy access to our 24-hour fitness centre, business centre and indoor saltwater swimming pool. Experience rest and relaxation at the Spa InterContinental®, and enjoy contemporary dining at Azure Restaurant & Bar.

MEETINGS AND EVENTS

Whether you are planning an important business meeting for 10 people or a grand banquet for 420, our professional meeting and event planners will assist you with every detail. Our hotel offers over 18,000 square feet of dynamic venues that will enhance your event perfectly. Choose from a variety of function spaces and floor plans with flexible layouts that can be configured to your unique needs.



InterContinental Toronto Centre

225 Front Street West Toronto ON M5V 2X3 Canada

Telephone: +01 416 597 1400 or +1 800 422 7969

Fax: +01 416 597 8128

torontocentre@ihg.com

torontocentre.intercontinental.com