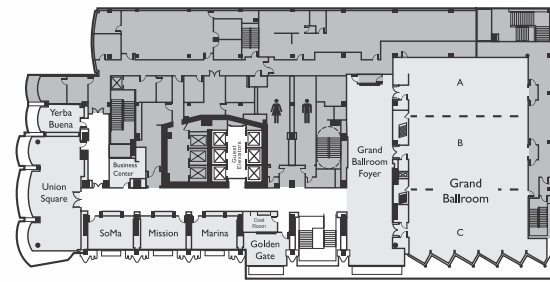
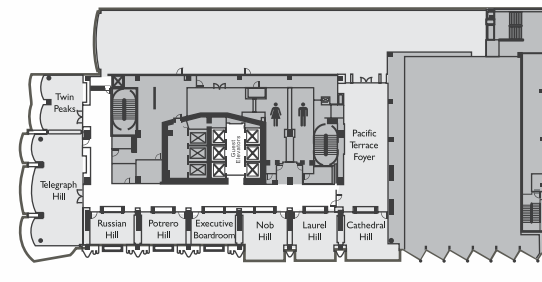


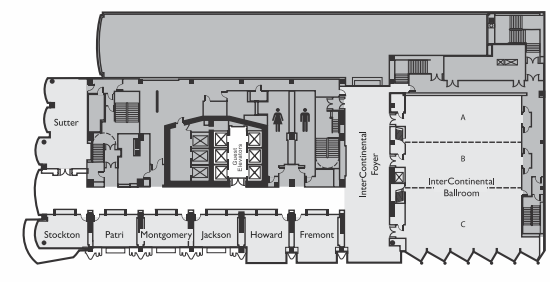
THIRD FLOOR



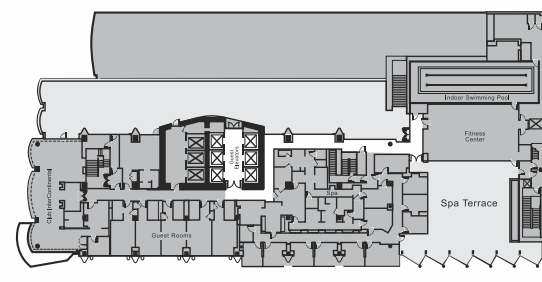
FOURTH FLOOR



FIFTH FLOOR



SIXTH FLOOR



THE HOTEL

The InterContinental San Francisco, a gleaming tower of cool blue, rises above the city's most vibrant downtown neighborhood. Modern architecture and ingrained state-of-the-art technological features are seamlessly integrated with an intimate interior. Our central location means you will be adjacent to Moscone Convention Center, steps from the renowned restaurants and bars of the eclectic South of Market district and minutes away from the financial district, world class shopping, cultural and sightseeing venues.

INSIDER COLLECTION

Our Insider Collection allows you to benefit from our hotel's unrivaled local knowledge. Often inspired by the destination itself, these experiences can be tailored to any event or meeting, ensuring that it delivers results and creates an experience to remember.

INSIDER LOCATIONS

Insider Locations give you an opportunity to base some of your event away from the hotel. We offer exclusive access to a variety of venues and experiences, allowing delegates to experience a side of the destination that visitors rarely see.

INSIDER SPEAKERS

A well-chosen speaker can bring your event to life and really inspire your delegates. Insider Speakers range from celebrities and cultural experts to sporting heroes, and all have a local connection.

INSIDER COMMUNITY

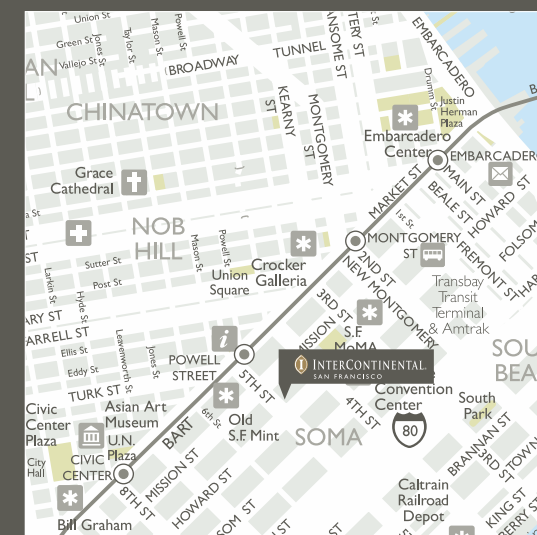
Insider Community events allow delegates to make a positive difference to the community they are visiting. It could be anything from painting a mural at a local school to preparing lunch in a homeless shelter.

INSIDER INTERACTIONS

We offer a range of team-building experiences which can be based on-site or in the local area. They are an original way to engage and motivate delegates while giving them a chance to interact with their destination.

INSIDER BREAKS

With Insider Breaks, a few minutes out of a busy day can become a whole experience in itself. It could be a talk from the concierge on local sights or a live cooking station hosted by the chef and showcasing local recipes.



**I** INTERCONTINENTAL.  
SAN FRANCISCO

InterContinental San Francisco  
888 Howard Street San Francisco CA 94103  
Tel: +1 415 616 6500 Fax: +1 415 616 6581  
icsfsales@ihg.com  
www.intercontinentalsanfrancisco.com

SAN FRANCISCO

InterContinental Meetings are designed to capture a genuine sense of place that will inspire delegates and get results. Our experienced team understands the demands on your time as a busy event planner and is focused on making sure that the process runs seamlessly at every stage. Whatever the event, the InterContinental Meetings team is here to make life easier for you and to create a rewarding occasion for those attending.

HOTEL FACILITIES

InterContinental San Francisco is the most technologically advanced hotel in San Francisco, from cutting-edge conference technology to the latest in room occupancy monitoring. Each system is designed to provide our guests with an unparalleled experience.

All of the 550 guestrooms, including 14 suites, have a distinctly modern feel featuring natural wood and marble finishes, large working areas, flat-screen televisions and breathtaking cityscapes afforded by floor-to-ceiling windows.

For dining, entertainment and relaxation, the InterContinental San Francisco offers as many options for staying in as the city does for going out. Exquisite dining is offered at Luce, where each dish showcases local, organic and sustainable ingredients perfectly married with global influences and flavors. Experience Grappa, a traditional Italian drink that is discovering renewed popularity, at the nation's only Grappa bar, Bar 888. Treat yourself to personalized luxury at our Spa, which features ten treatment rooms boasting quietly modern furnishings and specialized treatments, such as Vichy Rainshower Immersion and holistic Ayurvedic massage. Or take advantage of our 24-hour fitness center or a dip in our indoor lap-pool.

MEETINGS AND EVENTS

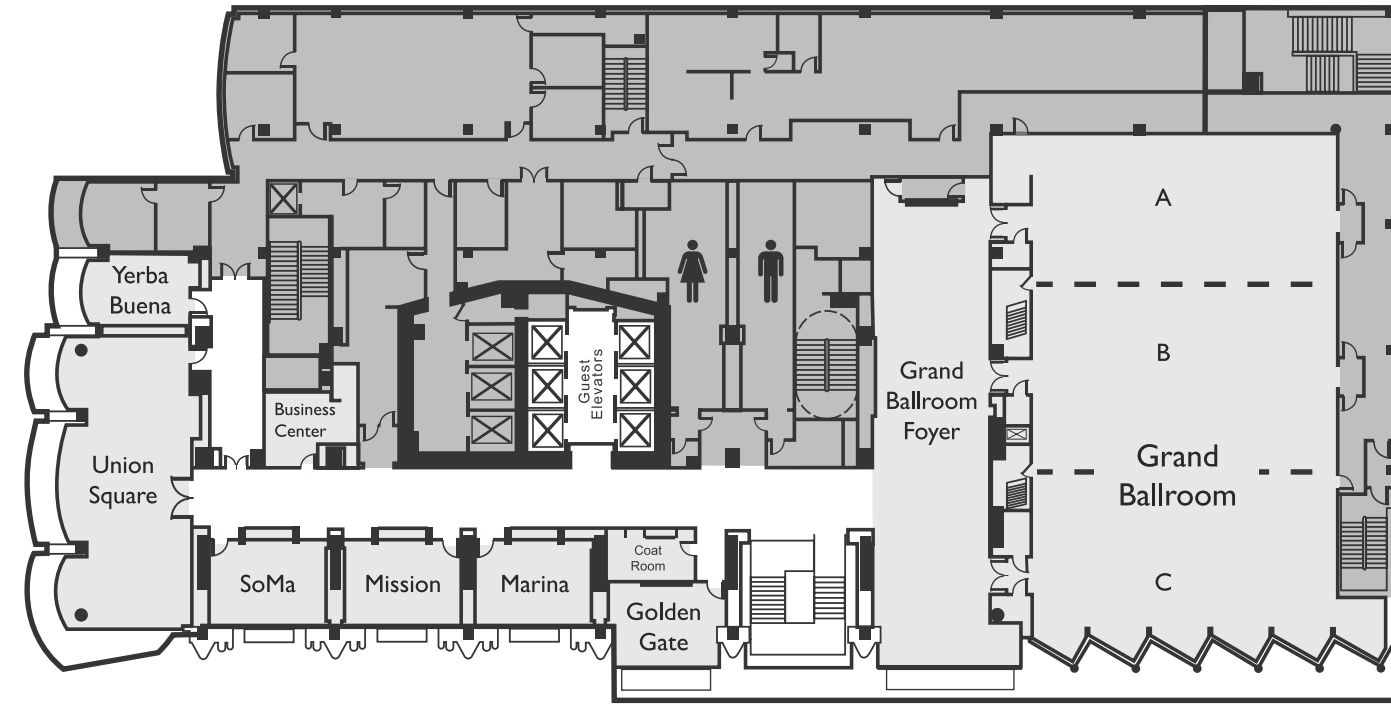
To us, it's all about matching our execution with your expectations. Our event facilities are spread over three expansive floors, consisting of two major customizable ballrooms and 21 smaller meeting rooms of varying size. All meeting rooms have natural light pouring in through floor-to-ceiling windows, setting a new standard for what an event can, and should, be.

A PERSONAL RESPONSIVE SERVICE

InterContinental Meetings are delivered by a highly-trained team focused on understanding your needs and staging an event that is tailored to you. Every element of our service and technology is designed to simplify the event planning process, from fast availability checks and transparent pricing to the latest technology tools such as virtual tours and fully interactive floor plans that can be customized to each event.



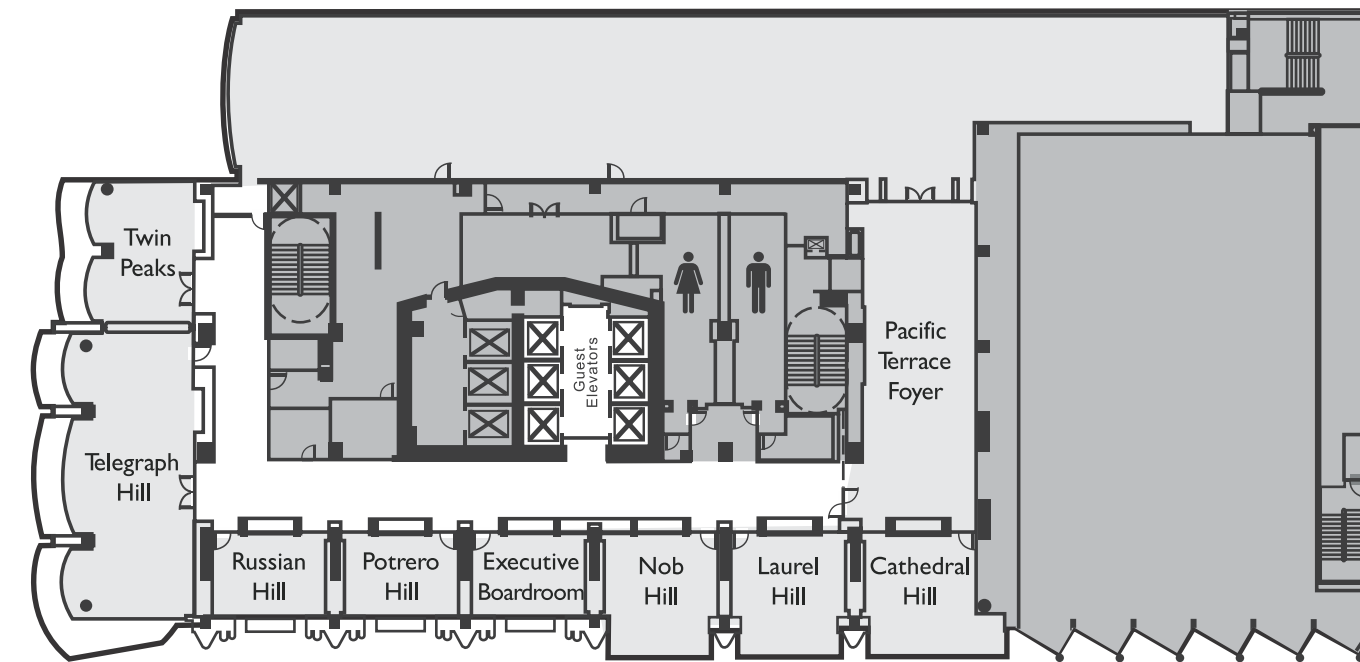
THIRD FLOOR



Name of Room	Theater Style	Classroom	Cocktail Reception	Banquet	U-Shape	Hollow Square	Size (sq. ft.)	Length x Width (ft.)	Height (ft.)	Floor
--------------	---------------	-----------	--------------------	---------	---------	---------------	----------------	----------------------	--------------	-------

Grand Ballroom	840	405	1000	540	119	118	6800	103 x 63	17.5	3
Grand Ballroom A	208	126	200	150	54	58	1890	30 x 63	17.5	3
Grand Ballroom A & B	468	252	575	360	78	88	4253	67.5 x 63	17.5	3
Grand Ballroom B	260	126	300	180	62	70	2363	37.5 x 63	17.5	3
Grand Ballroom B & C	488	252	600	360	80	94	4600	73 x 63	17.5	3
Grand Ballroom C	228	126	250	180	62	70	2237	35.5 x 63	17.5	3
Grand Ballroom Foyer	-	-	270	-	-	-	2350	94 x 24	9.5	3
Golden Gate	28	12	-	20	18	22	328	20.5 x 16	10	3
Marina	40	24	-	30	22	24	408	24 x 17	10	3
Mission	40	24	-	30	22	24	408	24 x 17	10	3
SoMa	40	24	-	30	22	24	408	24 x 17	10	3
Union Square	143	78	150	100	50	58	1577	59.5 x 26.5	10	3
Yerba Buena	24	18	-	20	17	22	319	14.5 x 22	10	3

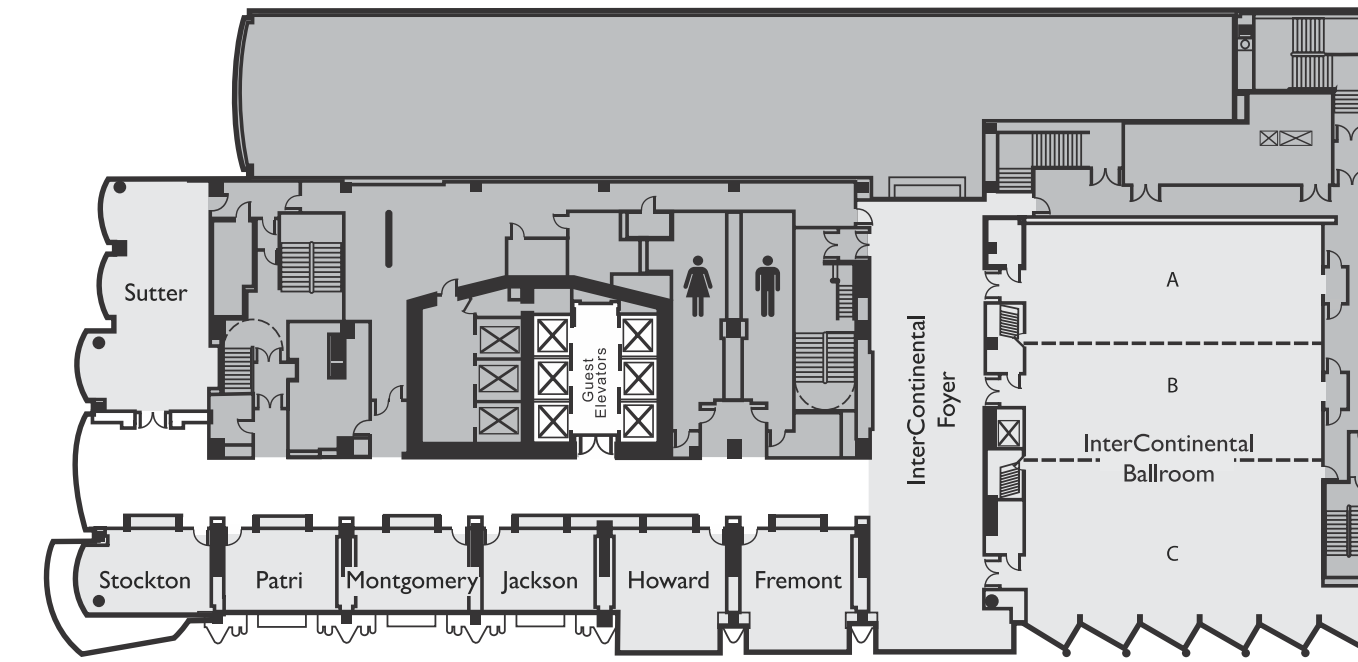
FOURTH FLOOR



Name of Room	Theater Style	Classroom	Cocktail Reception	Banquet	U-Shape	Hollow Square	Size (sq. ft.)	Length x Width (ft.)	Height (ft.)	Floor
--------------	---------------	-----------	--------------------	---------	---------	---------------	----------------	----------------------	--------------	-------

Pacific Terrace Foyer	-	-	150	-	-	-	1584	66 x 24	9.5	4
Cathedral Hill	55	33	-	40	26	28	600	24 x 25	10	4
Laurel Hill	55	33	-	40	26	28	600	24 x 25	10	4
Nob Hill	55	33	-	40	26	28	600	24 x 25	10	4
Potrero Hill	40	21	-	30	22	24	408	17 x 24	10	4
Russian Hill	40	21	-	30	22	24	408	17 x 24	10	4
Telegraph Hill	143	78	150	100	50	58	1577	59.5 x 26.5	10	4
Twin Peaks	66	21	-	40	-	-	682	29 x 23.5	10	4
Executive Boardroom	-	-	-	-	-	-	408	24 x 17	10	4

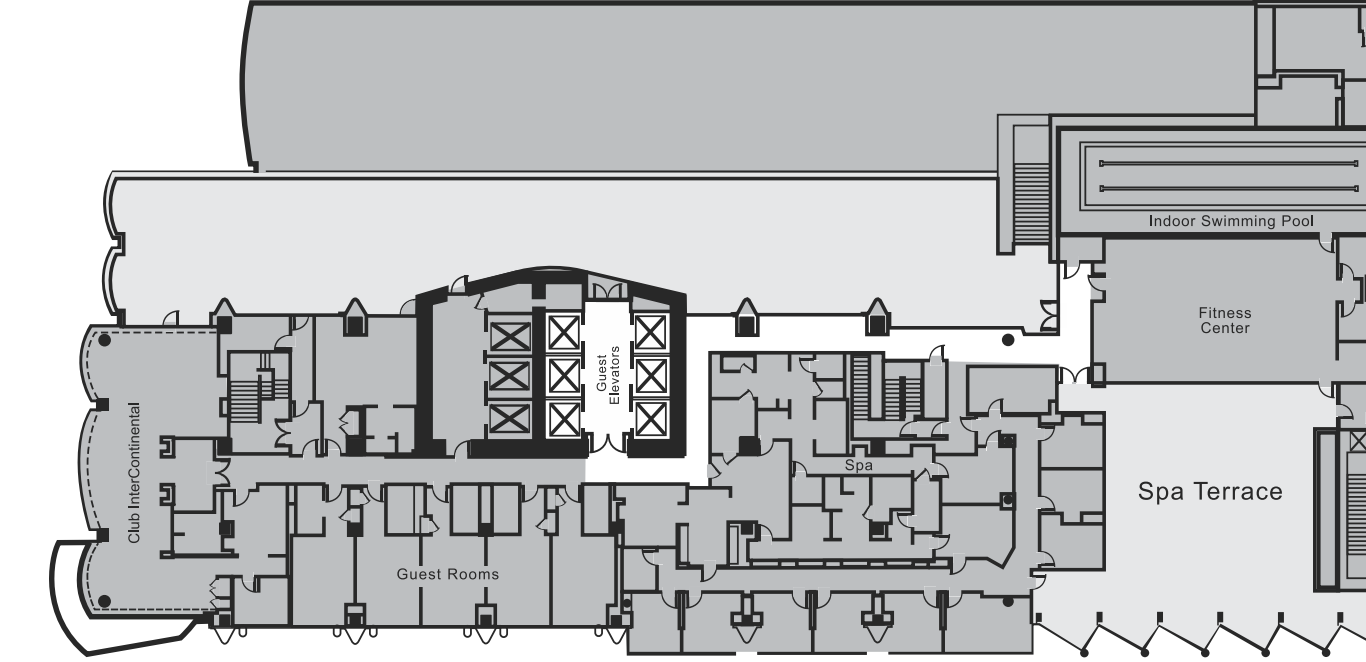
FIFTH FLOOR



Name of Room	Theater Style	Classroom	Cocktail Reception	Banquet	U-Shape	Hollow Square	Size (sq. ft.)	Length x Width (ft.)	Height (ft.)	Floor
--------------	---------------	-----------	--------------------	---------	---------	---------------	----------------	----------------------	--------------	-------

InterContinental Ballroom	707	306	800	480	92	100	5600	83 x 62.5	10	5
InterContinental Ballroom A	200	90	170	120	66	52	1563	25 x 62.5	10	5
InterContinental Ballroom A & B	410	189	300	240	74	88	3063	49 x 62.5	10	5
InterContinental Ballroom B	200	90	170	120	66	52	1500	24 x 62.5	10	5
InterContinental Ballroom B & C	433	216	400	300	74	88	3625	58 x 62.5	10	5
InterContinental Ballroom C	238	126	250	170	70	64	2125	34 x 62.5	10	5
InterContinental Ballroom Foyer	-	-	270	-	-	-	2256	94 x 24	13	5
Fremont	55	27	-	40	26	28	600	24 x 25	13	5
Howard	55	27	-	40	26	28	600	24 x 25	13	5
Jackson	40	24	-	30	22	24	408	24 x 17	10	5
Montgomery	40	24	-	30	22	24	408	24 x 17	10	5
Patri	40	18	-	30	22	24	408	24 x 17	10	5
Stockton	42	18	-	30	22	24	476	28 x 17	13	5
Sutter	110	36	100	80	44	52	1104	48 x 23	13	5

SIXTH FLOOR



Name of Room	Theater Style	Classroom	Cocktail Reception	Banquet	U-Shape	Hollow Square	Size (sq. ft.)	Length x Width (ft.)	Height (ft.)	Floor
--------------	---------------	-----------	--------------------	---------	---------	---------------	----------------	----------------------	--------------	-------

Spa Terrace	-	-	200	120	-	-	-	50 x 48	-	6
-------------	---	---	-----	-----	---	---	---	---------	---	---

