



INTERCONTINENTAL.  
NEW YORK BARCLAY



# HOTEL OVERVIEW



## GIN PARLOUR

Our Midtown Manhattan restaurant is sophisticated yet casual with culinary delights to match. With Chef Peter Betz at the helm of the operation, there is a new, personal twist to the overall approach, without dismissing the history of the hotel. The menu features a modern cuisine, while leading the industry by championing a positive and sustainable food offering.

**702** GUESTROOMS

**31** SUITES

**16** FLOORS

**20,000** SQ FT  
MEETING SPACE

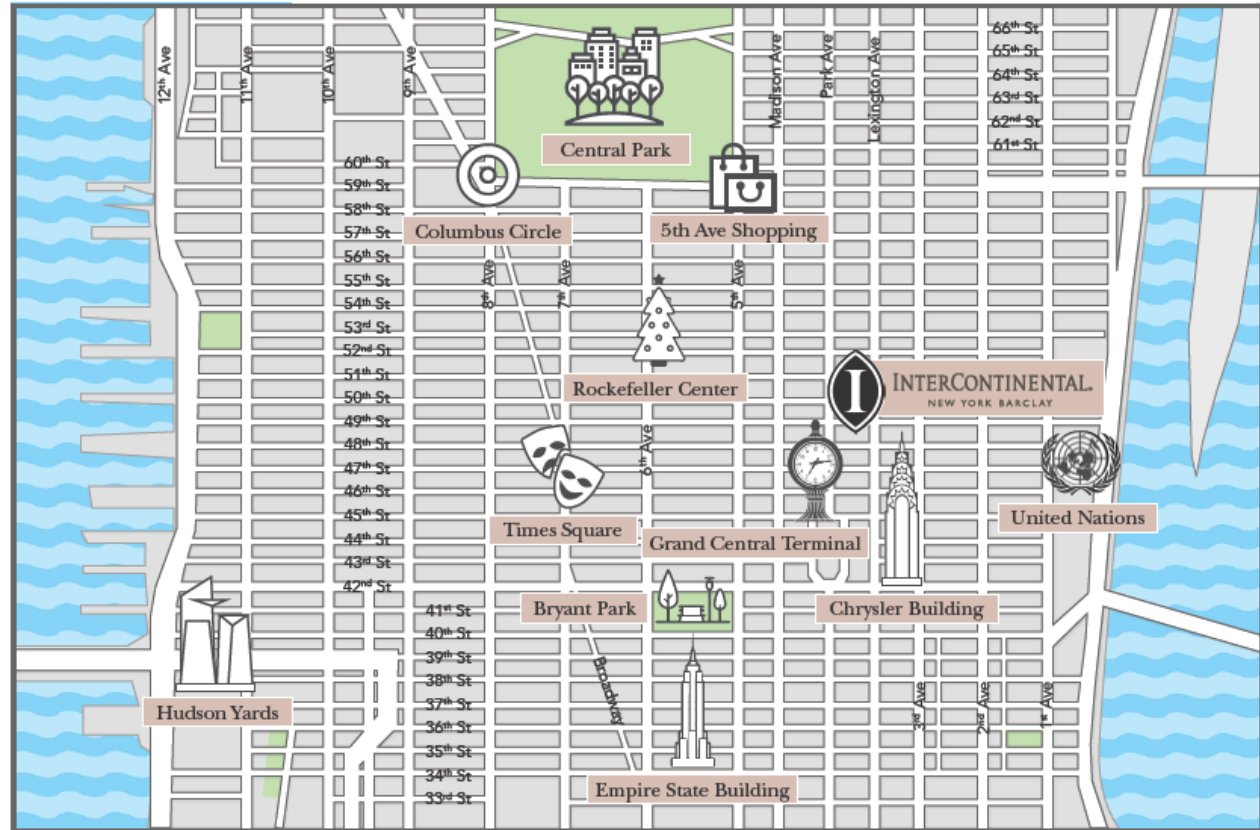
**5,000** SQ FT  
GRAND BALLROOM

## CLUB INTERCONTINENTAL®

Located off the lobby, the Club InterContinental® provides a quiet yet engaging space for business and social interactions.

## FITNESS CENTER

24-Hour TechnoGym equipment including treadmills, ellipticals, cycles, Peloton Bike and a wide variety of free-weights, exercise mats and stability balls.



Conveniently located in the middle of it all, The Barclay maintains a reputation for being supremely accessible yet unexpectedly serene.

It is easy to feel overwhelmed in the hectic energy of Midtown East, but at The Barclay, one quickly forgets we are within a short walking distance from:

- Grand Central Station
- The United Nations
- Rockefeller Center
- Chrysler Building
- Times Square
- 5th Ave Shopping

[LEARN MORE ABOUT OUR LOCATION >](#)

*Combining sophistication & contemporary design*



The architects Cross & Cross shaped the streetscape and skyline of New York City in the 1920s and 1930s with Upper East Side townhouses, Tiffany’s flagship store on 57th Street and the InterContinental New York Barclay.

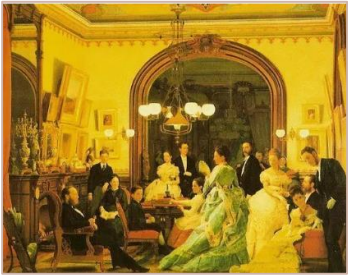
The early 1900s witnessed New York City as a cultural and commercial capital in the midst of a transformation. The New York Central Railroad, owned by the Vanderbilt family, saw the opportunity and decided to electrify its rail tracks and place them underground, sparking a building boom on the street level in the area just north of Grand Central Terminal. New, sumptuous Park Avenue penthouses, gleaming skyscrapers and the most elegant hotels in the world were being developed. The railroad satisfied the desires of the evolving time, invigorating Midtown Manhattan by transforming regional transportation and shaping the city we know today. The Barclay, built in 1926 as part of Grand Central Terminal’s urban design plan, played a pivotal role in Manhattan’s Midtown East renaissance. With a fashionable, yet residential atmosphere, the hotel quickly became popular among the New York Social Register set.

Notable Guests: Bette Davis, Gloria Swanson, Mary Pickford, Marlon Brando, Jimmie Durante, Debbie Reynolds, Ernest Hemingway and David O. Selznick, among others.

---

VIST THE NEXT PAGE FOR OUR HISTORY TIMELINE >

The Barclay in 1927



1926

The Beginning: Terminal City



1926

Building Designed by Cross & Cross



1926

Doors Open In 1926



1926

The Opening Dance



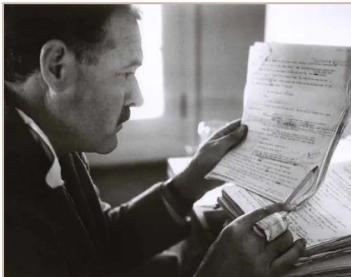
1926

Caswell-Massey



1931

Grand Central Station & Park Avenue



1940

For Whom The Bell Tolls, At The Barclay



1941

Legendary Guests – Perle Mesta



1945

First Bird-Cage In A Hotel Lobby



1978

Joined The InterContinental Brand



1995

Grand Restoration



1996

Bill Clinton Campaign NY Headquarters



2001

75<sup>TH</sup> Anniversary



2009

A Pioneer in Sustainability



2016

The New Barclay



Superior King



Deluxe Double



Barclay King

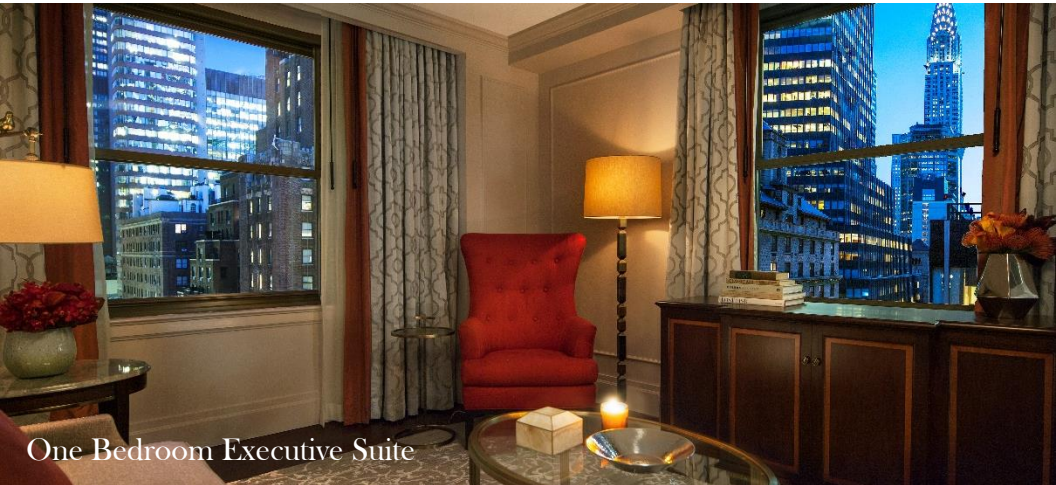


Our thoughtfully redesigned guestrooms and suites, furnished in Park Avenue residential-style with meticulous attention to detail, welcome guests to a comfortable living space of idyllic pleasure. Guestrooms provide a tranquil haven with crisp Federalist details and carefully selected local artwork that pay homage to The Barclay's 1926 legacy. Discover our rooms and suites, including the newly designed and expanded bathrooms, offering an eloquent marriage of modernity and elegance.

# LUXURIOUS RESIDENTIAL-STYLE



One Bedroom Premier Suite



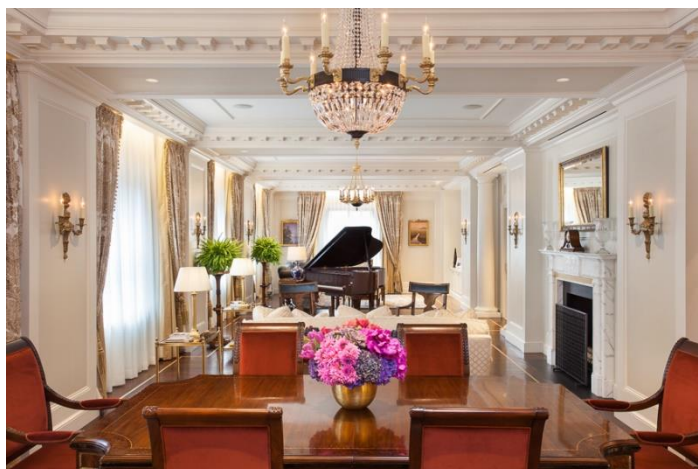
One Bedroom Executive Suite



Our spacious One Bedroom Deluxe Suites, starting at 500 square feet feature one king bed and a separate living area equipped with a decorative fireplace, pull-out sofa, desk and enhanced with hardwood flooring and the latest entertainment technologies. Our luxurious One Bedroom Executive Suites, starting at 1,100 square feet comes with custom furnishings and hardwood floors create intimacy and warmth, evoking feelings of tranquility and timeless elegance. All One Bedroom Suites have newly designed, lavish marble bathrooms come with heated floors and custom toiletries delicately scented with The Barclay's own signature fragrance by Caswell-Massey. Anichini bedding, Nespresso Coffee Service, yoga mats and access to thousands of publications via the digital news library, PressReader, complete the experience.

# ONE BEDROOM SUITES





The history of this highly distinguished private residence speaks for itself, placing The Barclay's Presidential Suite in a class all its own. The expanded 3,400 square foot Presidential Suite addresses the needs of heads of state, royalty and the most discerning travelers alike. Conceived with this guest in mind, the ample living and dining areas, entertainment center, bedrooms and bathrooms are exquisitely designed with historic accents and elegant furnishings. The impressive grand marble entrance, private fitness room, library office and baby grand piano add to the grandeur of the suite, setting a new standard of luxury accommodations. **FOR ALL BOOKING INQUIRIES >**

# PRESIDENTIAL SUITE



The Harold S. Vanderbilt Penthouse reflects The Barclay's commitment to refined service and unforgettable accommodations. Featuring floor-to-ceiling windows and offering breathtaking views of Midtown Manhattan and the Chrysler Building, the newly created 2,700 square foot penthouse boasts an additional 1,300 square feet of outdoor space in the private terrace. Offering two rooms, one master bedroom equipped with a king bed as well as a second room with two double beds, the Penthouse Sky Suite transports guests to their very own New York City residence. **FOR ALL BOOKING INQUIRIES >**

# HAROLD S. VANDERBILT PENTHOUSE





# GRAND BALLROOM

4,954 sq. ft.

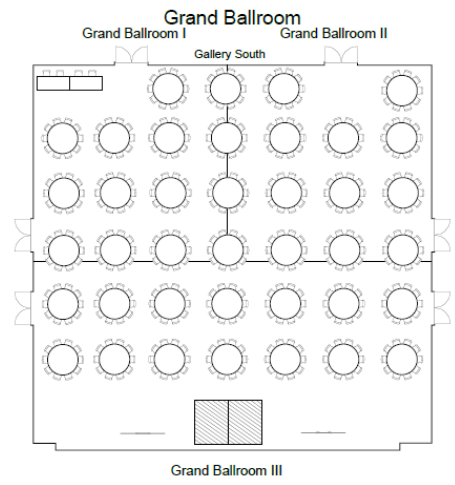
Custom made soft grey carpet featuring oval shapes & rich patterns

Divisible by airwall into three (3) spaces

Energy-efficient light emitting diodes (LED) in chandeliers

Two (2) built in HD drop-down projector screens / 8.25 ft" x 13.5 ft"

Three (3) 60 amp 3-phase power drops / One (1) 200 amp 3-phase power drop





# EMPIRE BALLROOM

3,546 sq. ft.

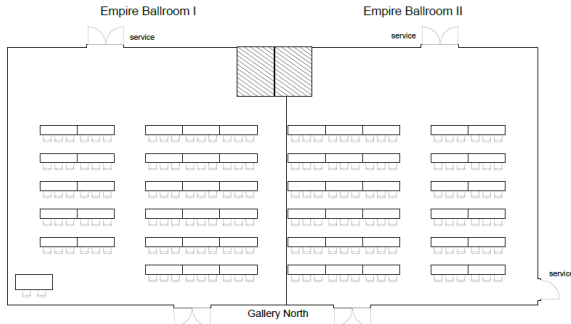
Custom made silvery-grey and soft yellow carpeting featuring unique shapes & patterns

Antique-inspired crown molding, mirrors, & sconces embodying 1920's appeal

Energy-efficient light emitting diodes (LED)

Divisible by airwall into two (2) spaces

Two (2) 60 amp 3-phase power drops





# BARCLAY SALON

**2,043 SQ. FT.**

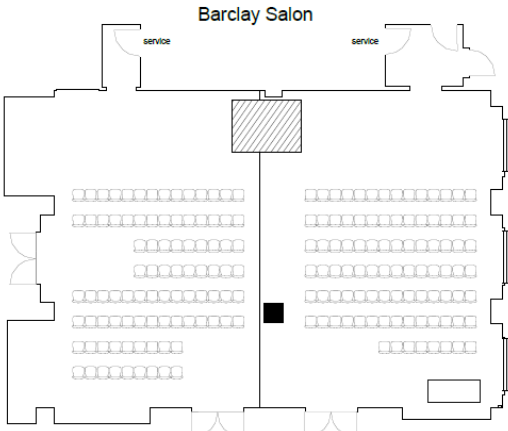
Energy-efficient light emitting diodes (LED) in chandeliers

Filled with natural light provided by windows facing North side of the hotel

Triple pane windows to ensure noise reduction

Divisible by airwall into two (2) spaces

Dual screen placement optional





## ASTOR SUITE I & II

1,025 SQ. FT.

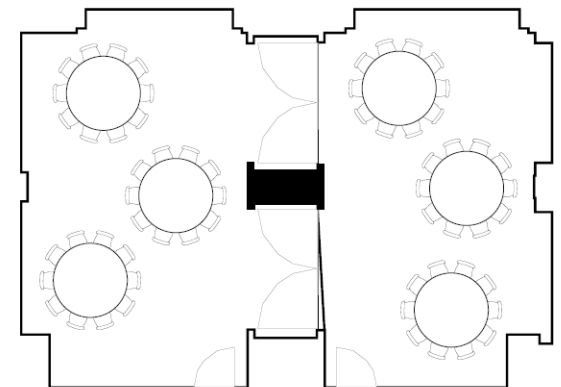
Filled with natural light provided by windows facing Lexington Avenue

Triple pane windows to ensure noise reduction

Custom built In double doors

Built in 70" LED Smart TV

Built in capabilities to host hardwire ethernet connections and analog DID lines





# ROCKEFELLER SUITE

930 sq. ft.

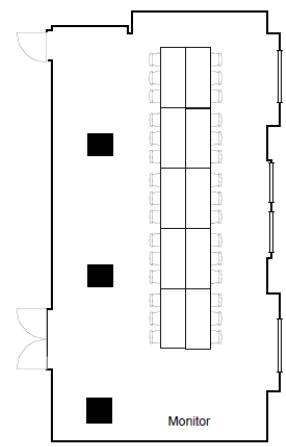
Antique-inspired mirrors and sconces embodying 1920's appeal

Filled with natural light facing Lexington Avenue

Triple pane windows to ensure noise reduction

Built In 70" LED Smart TV

Built in capabilities to host hardwire ethernet connections and analog DID lines







# MORGAN SUITE

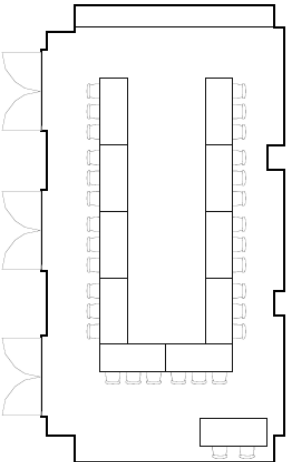
875 sq. ft.

Located directly across from Grand Ballroom III

Temperature and lighting control system available for manual adjustment

Built in 70" LED Smart TV

Built in capabilities to host hardwire ethernet connections and analog DID lines





## VANDERBILT SUITE

875 SQ. FT.

Custom built in boardroom with foyer

Filled with natural light facing Lexington Avenue

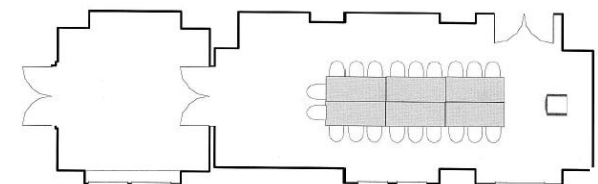
Triple pane windows to ensure noise reduction

Custom-made crystal chandeliers

90" LED Smart TV

Built in Polycom conference speakerphone

Built in capabilities to host hardwire ethernet connections and analog DID lines





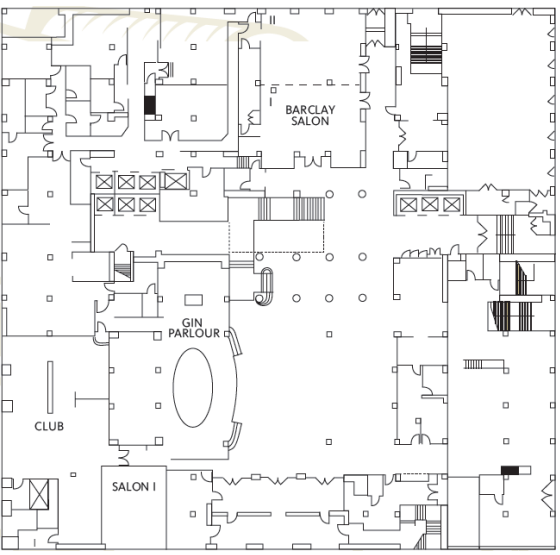
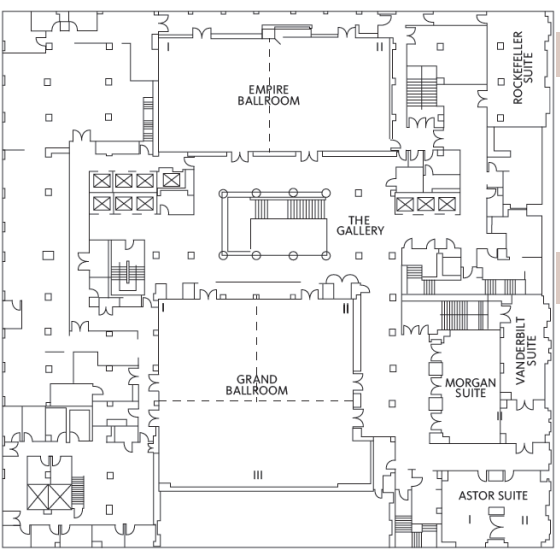
## SALON I

Salon I is an intimate room lined with Victorian emerald wallpaper and a built-in TV with plug-in capabilities. It is a flexible space that can be used for a boardroom meeting or plated dinner with various event options in between.



## PARLOUR ALCOVE

Thoughtfully placed behind our restaurant fireplace, the Parlour Alcove is a welcoming space for semi-private receptions up to 20 people. With built-in wooden shelving and numerous marble counter tops, it creates a seamless event flow.



MEETING SPACE	LENGTH	WIDTH	SQ. FT	RECEPTION	ROUNDS	THEATER	CLASSROOM 3 per 6 ft	U-SHAPE 3 per 6 ft	HOLLOW SQUARE	CONFERENCE
<b>LOBBY LEVEL</b>										
BARCLAY SALON	55'	36'	2,048	150	130	190	90	40	50	42
Barclay Salon I	37'	26'	1,012	75	60	90	45	30	36	30
Barclay Salon II	37'	26'	1,012	75	50	90	45	30	36	30
<b>MEZZANINE LEVEL</b>										
GALLERY PRE-FUNTION	-	-	4,000	350	-	-	-	-	-	-
GRAND BALLROOM	72'	68'	4,954	450	420	500	300	80	108	75
Grand Ballroom I	34'	34'	1,222	120	90	100	45	35	42	30
Grand Ballroom II	36'	34'	1,287	120	90	100	45	35	42	30
Grand Ballroom III	72	32'	2,400	200	180	250	110	60	70	60
EMPIRE BALLROOM	86'	41'	3,546	320	280	350	175	70	80	60
Empire Ballroom I	45'	42'	1,856	170	130	160	100	42	54	40
Empire Ballroom II	41'	40'	1,554	150	130	150	75	42	54	30
ASTOR SUITE	37'	27'	1,025	50	60	50	-	-	-	-
Astor Suite I	27'	19'	507	25	30	40	21	21	24	22
Astor Suite II	27'	19'	518	25	30	30	21	21	24	22
ROCKEFELLER SUITE	39'	22'	930	80	60	60	42	30	35	30
MORGAN SUITE	42'	21'	875	80	70	80	42	35	40	35
VANDERBUILT SUITE	38'	16'	875	-	-	-	-	-	-	22





# THE PARLOUR

Inspired by Dutch and English gin bars of the 1920's, The Parlour offers a countless array of selective brands and varieties, perfect for every palate. Novices and aficionados alike are welcome to acquaint themselves with the history of gin as told by connoisseurs who serve up specialty cocktails while bringing their stories to life. The bar proudly serves over 80 premium gins in addition to a wide variety of other traditional favorites.

Our Midtown Manhattan restaurant is sophisticated yet casual with culinary delights to match. With Chef Peter Betz at the helm of the operation, there is a new, personal twist to the overall approach, without dismissing the history of the hotel. The menu features a modern cuisine, while leading the industry by championing a positive and sustainable food offering.

Our priority is to provide delicious and nutritious meals using the most organic, local and sustainable products possible. Our in-room dining menu exemplifies our mission, ensuring guests receive an unparalleled culinary experience when traveling. We understand the challenges of being away from home and wish to satisfy your desires for exceptional service.

## The Parlour Menu

### The Parlour:

- Breakfast: 6:30 am to 10:30 am (M-F) 11:00am (S/S)
- Lunch: 11 am to 3 pm
- Lite Bites: 3 pm to 5 pm
- Dinner: 5 pm to 11 pm
- Bar: 11:30 am to 1 am

### In-Room Dining:

- Breakfast: 6:30 am to 11 am
- All-day dining: 11 am to 12 am





*Organic,  
local &  
sustainable*

Inquire about your event





### LOCATION

- Midtown East location in heart of the city
- On 48<sup>th</sup> between Park Ave & Lexington Ave
- Steps from Madison & Fifth Ave Shopping

### ACCOMMODATIONS

- 702 spacious guestrooms, 31 luxurious suites
- Furnished in Park Avenue residential-style
- Custom Anichini bedding, 42” LED flat screen televisions & PressReader in all standard rooms

### MEETINGS & EVENTS

- 20,000 sq. ft. of Meeting Space
- 5,000 sq. ft. Grand Ballroom
- Two large ballrooms and an additional five breakout rooms
- State-of-the-art audiovisual equipment with on-site technical support

### CULINARY

- The Parlour Restaurant & Bar
- In Room Dining:
  - Breakfast: 6:30am to 11am
  - All-day Dining: 11am to 12am

### FITNESS CENTER

- Complimentary access to 24-hour Fitness Center
- TechnoGym equipment including treadmills, ellipticals and cycles – Peloton Bike
- Wide variety of free-weights, exercise mats and stability balls

### SUSTAINABILITY

- Rooftop Garden with Herbs used in our Garden to Glass cocktail series
- Six bee hive apiary which produce Barclay Honey

### CONNECT WITH US

[intercontinentalnybarclay.com](http://intercontinentalnybarclay.com) >




---

InterContinental New York Barclay  
 111 East 48<sup>th</sup> Street  
 New York, New York, 10017, USA  
 Telephone: (212) 906-3100 | Email: [barclays@ihg.com](mailto:barclays@ihg.com)

---

- **LaGuardia Airport (LGA):** 9 Miles | 30 Min | \$35 Taxi
  - **JFK International Airport (JFK):** 17 miles | 40 Min | \$52 Taxi
  - **Newark Airport (EWR):** 17 Miles | 45 Min | \$75 Taxi
- 

 [Find our directions](#) >

---