



MEET WITH CONFIDENCE | EVENT SPACE

Providing a safe, healthy, and clean stay for every traveler has always been important to us. Giving you additional confidence in our approach is more critical to us than ever before.

Because connection matters, IHG presents “**Meet with Confidence**” to provide physical distancing guidelines for Meetings & Events. IHG will continue to refine and update the plan as guidance continue to evolve from global health organizations including the World Health Organization (WHO) and Central for Disease Control (CDC), and state and local authorities.



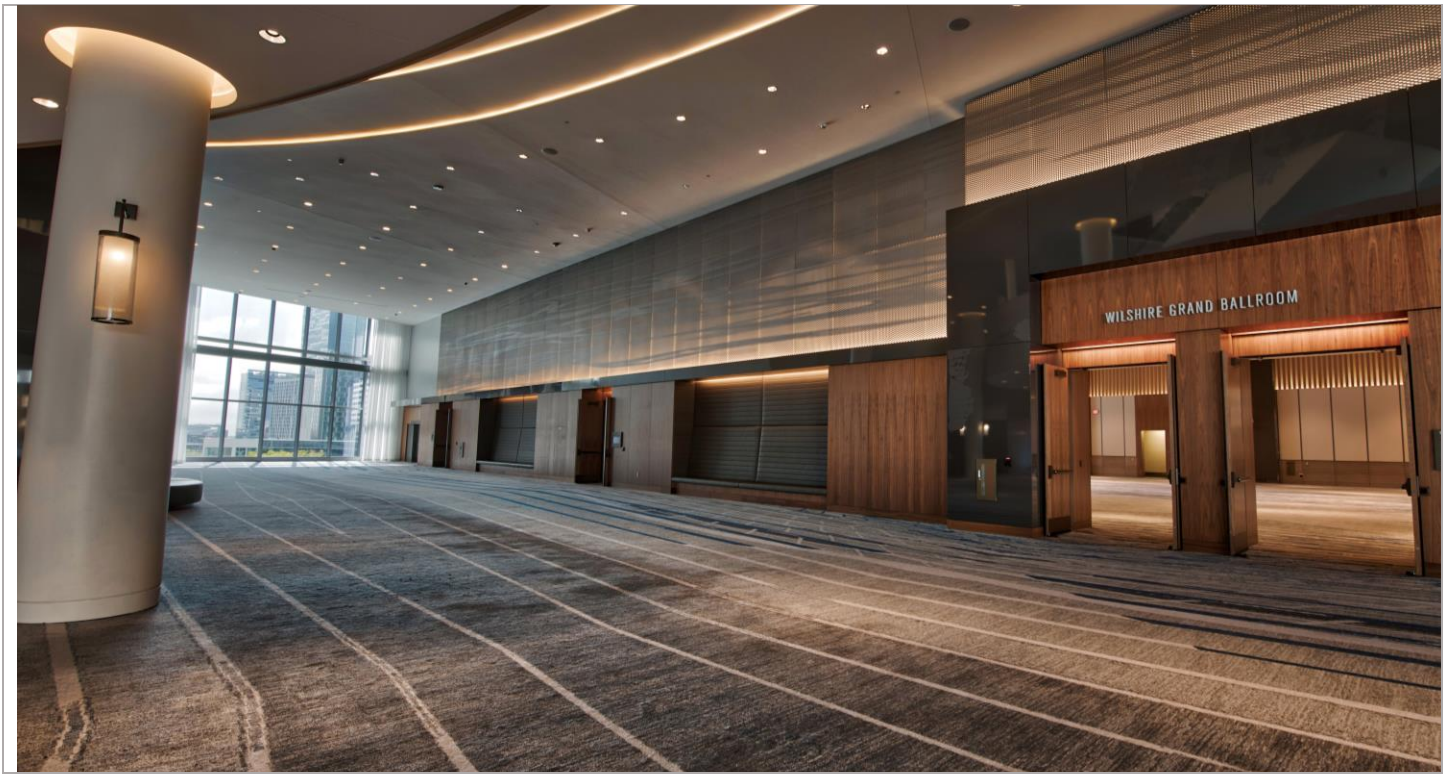
Subject to change without notice.

InterContinental Los Angeles Downtown
900 Wilshire Boulevard, Los Angeles, CA 90017
Tel. 213-688-7777 | [DTLA.INTERCONTINENTAL.COM](https://www.dtlai.intercontinental.com)
[IHG Travel Advisory Policy](#)

MEETING & FUNCTION SPACE				CAPACITY			
	Floor/Rm #	Unit (SF)	Classroom 1.5 per 6'	Theater	U Shape or Conference	Reception	Banquet RD of 6
Wilshire Grand Ballroom	5th Floor	20,467	455	819	164	819	630
Wilshire Grand Ballroom I	5th Floor	5,626	125	225	45	225	173
Wilshire Grand Ballroom II	5th Floor	8,730	194	349	70	349	269
Wilshire Grand Ballroom III	5th Floor	6,111	136	244	49	244	188
Wilshire Grand Pre-function	5th Floor	18,845				754	580
Hollywood Ballroom	7th Floor	5,346	119	214	43	214	164
Hollywood Ballroom I	7th Floor	2,916	65	117	23	117	90
Hollywood Ballroom II	7th Floor	2,430	54	97	19	97	75
Hollywood Ballroom Patio	7th Floor	1,700	38	68	14	68	52
Hollywood Ballroom Pre-function	7th Floor	1,889				76	58
Silver Lake	5th Floor	2,133	47	85	17	85	66
Silver Lake A	5th Floor	1,323	29	53	11	53	41
Silver Lake B	5th Floor	810	18	32	6	32	25
Echo Park	5th Floor	930	21	37	7	37	29
Hancock Park	5th Floor	2,268	50	91	18	91	70
Hancock Park West	5th Floor	1,222	27	49	10	49	38
Hancock Park East	5th Floor	1,036	23	41	8	41	32
K-Town	5th Floor	960	21	38	8	38	30
Boyle Heights	5th Floor	725	16	29	6	29	22
Ladera Heights	5th Floor	725	16	29	6	29	22
Westwood	5th Floor	696	15	28	6	28	21
Lincoln Heights	5th Floor	360	8	14	3	14	11
Beverlywood	5th Floor	350	8	14	3	14	11
Mount Washington	5th Floor	308	7	12	2	12	9
Glassell Park	5th Floor	336	7	13	3	13	10
Los Feliz	5th Floor	600	13	24	5	24	18
Olympic	6th Floor	812	18	32	6	32	25
Broadway	6th Floor	841	19	34	7	34	26
Gem	6th Floor	464	10	19	4	19	14
Mission	6th Floor	570	13	23	5	23	18
Roxy	6th Floor	812	18	32	6	32	25
Executive Boardroom 1	6th Floor	962			6		
Executive Boardroom 2	6th Floor	984			6		
Palace	6th Floor	725	16	29	6	29	22
Majestic	6th Floor	750	17	30	6	30	23
Metropolitan	6th Floor	725	16	29	6	29	22
Jade	6th Floor	375	8	15	3	15	12
Novelty	6th Floor	375	8	15	3	15	12
Pearl	6th Floor	336	7	13	3	13	10
Century	6th Floor	308	7	12	2	12	9
Royal	6th Floor	660	15	26	5	26	20
Roosevelt	7th Floor	2220	49	89	18	89	68
Roosevelt A	7th Floor	1440	32	58	12	58	44
Roosevelt B	7th Floor	780	17	31	6	31	24
Roosevelt Pre-Function	7th Floor	3740	83	150	30	150	115
OUTDOOR EVENT SPACE				CAPACITY			
	Floor/Rm #	Unit (SF)				Reception	Banquet RD of 6
Pool Deck Fire Pit Area	7th Floor	3,400				136	105
Spire 73 North	73rd Floor	3,192				128	98

Subject to change without notice.

InterContinental Los Angeles Downtown
900 Wilshire Boulevard, Los Angeles, CA 90017
Tel. 213-688-7777 | DTLA.INTERCONTINENTAL.COM
[IHG Travel Advisory Policy](#)



Wilshire Grand Ballroom - Prefunction



Hollywood Ballroom



Spire 73 – North Deck

Subject to change without notice.

InterContinental Los Angeles Downtown
 900 Wilshire Boulevard, Los Angeles, CA 90017
 Tel. 213-688-7777 | DTLA.INTERCONTINENTAL.COM
[IHG Travel Advisory Policy](#)



INTERCONTINENTAL.
LOS ANGELES DOWNTOWN



900 WILSHIRE BOULEVARD, LOS ANGELES, CA 90017
DTLA.INTERCONTINENTAL.COM • TEL.: +213.688.7777 • RESERVATIONS: +1.877.320.8454

Subject to change without notice.

InterContinental Los Angeles Downtown

900 Wilshire Boulevard, Los Angeles, CA 90017
Tel. 213-688-7777 | DTLA.INTERCONTINENTAL.COM
IHG Travel Advisory Policy

PODIUM 5TH FLOOR



Wilshire Grand Ballroom



Wilshire Grand Ballroom • Pre-Function Area



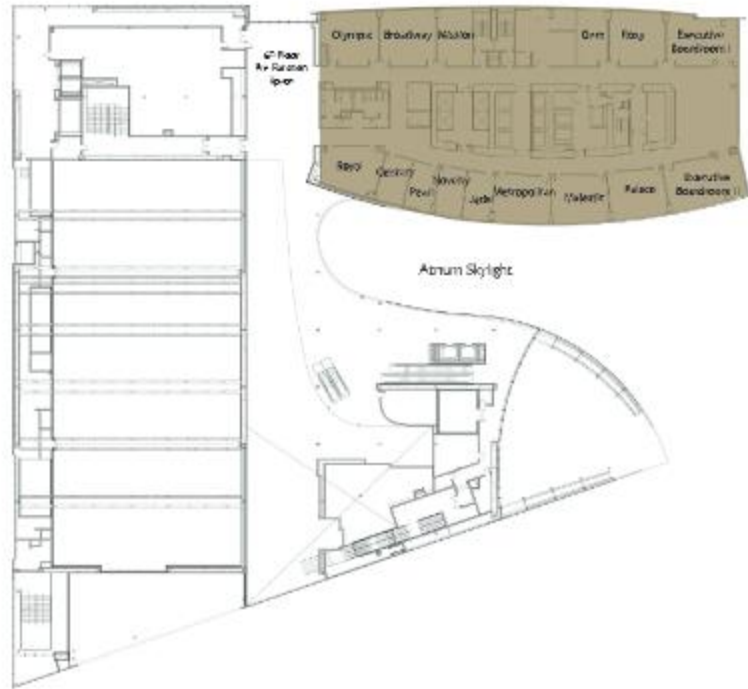
Porte Cochère

5 TH FLOOR MEETING & FUNCTION SPACE						CAPACITY							
	L	W	CL HT	UNIT (SQ FT)	UNIT (SQ M)	CS (3 per 6)	THR	CONF (3 per 6)	U	BQT (7'x10'S 10)	REC	8X10 BOOTH	10X10 BOOTH
Wilshire Grand Ballroom	211	97	22	20,467	1,902	1,410	1,755			1,140	1,400	134	107
Wilshire Grand Ballroom I	58	97	22	5,626	523	450	760	78	90	300	400	39	32
Wilshire Grand Ballroom II	92	97	22	8,730	811	540	1,200	78	110	560	490	55	44
Wilshire Grand Ballroom III	63	97	22	6,111	568	420	760	78	90	400	350	36	29
Wilshire Grand Ballroom Pre-Function Area	136	59	26	18,845	1,286						1,000	87	69
Silver Lake	79	27	12	2,133	198	117	122	57	60	120	200		
Silver Lake A	49	27	12	1,323	123	63	50	39	21	70	72		
Silver Lake B	30	27	12	810	75	36	72	40	39	50	50		
Echo Park	31	30	12	930	86	36	50	21	21	40	50		
Hancock Park	84	27	12	2,268	211	69	184	66	74	150	225		
Hancock Park West	47	26	12	1,222	114	48	98	39	39	80	96		
Hancock Park East	37	28	12	1,036	96	21	86	27	35	70	85		
K-Town	40	24	12	960	89	33	68	27	27	50	85		
Boyle Heights	29	25	12	725	67	36	53	24	24	40	50		
Ladera Heights	29	25	12	725	67	36	53	24	24	40	50		
Westwood	29	24	12	696	65	36	53	18	24	40	50		
Lincoln Heights	24	15	13	360	33	12	30	12	15	20	30		
Beverlywood	25	14	13	350	33	12	30	12	15	20	30		
Mount Washington	14	22	12	308	29	12	30	12	15	20	30		
Glassell Park	14	24	12	336	31	12	30	12	15	20	30		
Los Feliz	25	24	12	600	56	21	42	18	20	40	45		
5 TH FLOOR OUTDOOR MEETING & FUNCTION SPACE											CAPACITY		
	L	W	CL HT	UNIT (SQ FT)	UNIT (SQ M)	REC							
Wilshire III Garden	88	9				88	9		792	74	50		
Hollywood Terrace	86	varies	N/A			86	varies	N/A	599	56	75		

Subject to change without notice.

InterContinental Los Angeles Downtown
 900 Wilshire Boulevard, Los Angeles, CA 90017
 Tel. 213-688-7777 | DTLA.INTERCONTINENTAL.COM
[IHG Travel Advisory Policy](#)

PODIUM 6TH FLOOR



Executive Boardroom I



Executive Foyer



70th Floor Sky Lobby

6TH FLOOR MEETING & FUNCTION SPACE

	L	W	CL HT	UNIT (SQ FT)	UNIT (SQ M)	CAPACITY					
						CS (3 per 6)	THR	CONF (3 per 6)	U	BQIT (72" HX 36" D)	REC
Olympic	29	28	12	812	75	24	58	21	21	40	45
Broadway	29	29	12	841	79	24	50	21	21	40	45
Mission	19	30	12	570	53	24	40	21	21	20	40
Gem	16	29	12	464	43	12	24	21	21	20	24
Roxy	29	28	12	812	75	27	50	21	24	40	50
Executive Board Room I	37	26	12	962	89	N/A	N/A	10	N/A	N/A	N/A
Executive Board Room II	41	24	11	984	91	N/A	N/A	10	N/A	N/A	N/A
Palace	29	25	13	725	67	27	50	24	24	40	50
Majestic	30	25	12	750	70	30	50	24	24	40	54
Metropolitan	29	25	12	725	67	27	50	24	24	40	50
Jade	25	15	13	375	35	12	30	18	15	20	30
Novelty	25	15	13	375	35	12	30	18	15	20	30
Pearl	24	14	13	336	32	12	30	12	15	20	30
Century	22	14	13	308	29	12	30	12	15	20	30
Royal	33	20	12	660	62	27	48	21	21	40	46
6th Floor Pre-Function Area	72	32		2,304						140	200

Subject to change without notice.

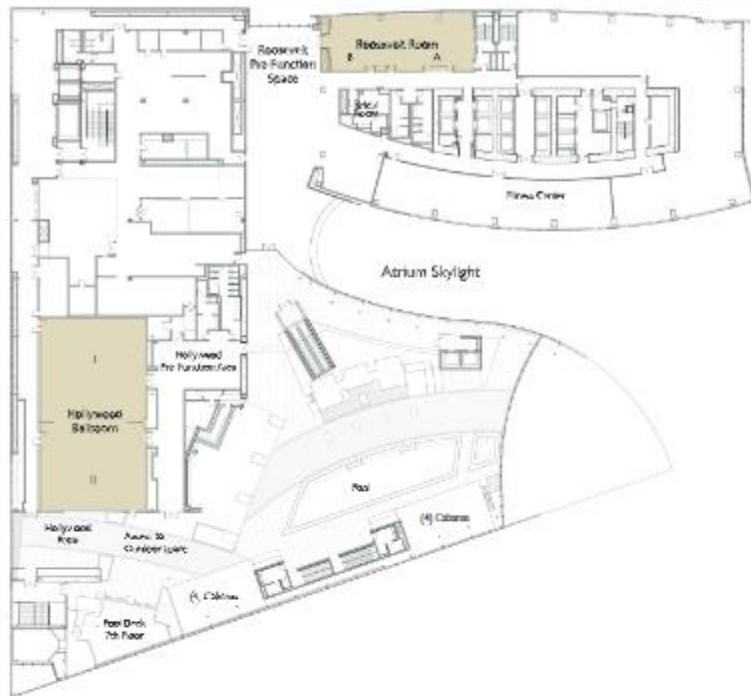
InterContinental Los Angeles Downtown

900 Wilshire Boulevard, Los Angeles, CA 90017

Tel. 213-688-7777 | DTLA.INTERCONTINENTAL.COM

[IHG Travel Advisory Policy](#)

PODIUM 7TH FLOOR



Hollywood Ballroom



Roosevelt Room



Spire 73 North Deck

7 TH FLOOR MEETING & FUNCTION SPACE						CAPACITY							
	L	W	CL HT	UNIT (SQ FT)	UNIT (SQ M)	CS (3 per 6)	THR	CONF (3 per 6)	U	BQT (77" H X 51")	REC	8X10 BOOTH	10X10 BOOTH
Bridal Room	21	17	9	357	33	N/A	N/A	N/A	N/A	6	10	N/A	N/A
Hollywood Ballroom	99	54	12	5,346	497	255	582	81	88	360	750	35	28
Hollywood Ballroom I	54	54	12	2,916	271	156	308	39	50	160	350	16	13
Hollywood Ballroom II	45	54	12	2,430	226	99	275	33	44	160	350	19	15
Hollywood Ballroom Pre-Function	25	45	13	1,889	175								
Hollywood Ballroom Patio	63	27	16	1,700	158					90	100		
Roosevelt	74	30	13	2,220	206	81	180	60	66	100	140		
Roosevelt A	48	30	13	1,440	134	54	105	24	36	60	100		
Roosevelt B	26	30	13	780	72	30	75	33	15	40	40		
Roosevelt Pre-Function Space	110	34		3,740	347					130			

HOTEL & MEETING SPACE HIGHLIGHTS						CAPACITY	
	L	W	CL HT	UNIT (SQ FT)	UNIT (SQ M)	REC	
Podium Pool Deck on 7th Floor	66	varies	N/A	3,400	316	100	

73 RD FLOOR MEETING & FUNCTION SPACE						CAPACITY			
	L	W	CL HT	UNIT (SQ FT)	UNIT (SQ M)	THR	CONF (36')	BQT (77" H X 51")	REC
Spire 73 North Deck on 73rd Floor	152	21	N/A	3,192	297	125		80	720

HOTEL & MEETING SPACE HIGHLIGHTS

NUMBER OF ELEVATORS

8 High-Speed Double-Deck Elevators
40 Second Ride to Sky Lobby - 70th Floor

NUMBER OF HOTEL ROOMS

365 Kings / 415 Double Queens
109 Suites

MEETING FUNCTION SPACE SQUARE FOOTAGE

33 Meeting Rooms
Meeting & Pre-Function Space:
66,540 sq ft (6,182 sq m)

LARGEST MEETING ROOM

Wilshire Grand Ballroom I, II, III
20,467 sq ft (1,902 sq m)

TOTAL OUTDOOR EVENT SPACE

28,437 sq ft (2,642 sq m)

FOOD & BEVERAGE

No Dive Bar - 7th Floor
Dekkadance/Sora - 69th Floor
Lobby Lounge/Club InterContinental - 70th Floor
La Boucherie - 71st Floor
Spire 73 - 73rd Floor