

WELCOME TO LONDON'S  
ULTIMATE EVENTS VENUE



INTERCONTINENTAL®  
LONDON - THE O2

Luxurious and timelessly elegant, InterContinental London – The O2 is an exceptional hotel, carrying all the hallmarks of the InterContinental brand. Positioned on the River Thames on London’s Greenwich Peninsula, it directly connects to The O2 and central London.



### GUEST ROOMS AND SUITES

The hotel features 453 spacious guest rooms, including 59 suites and rooms with views of The O2 and Canary Wharf. Timeless luxury is fused with contemporary comfort. Each room features floor-to-ceiling windows, smart TV, espresso machine, and bath with separate walk-in shower.

### CLUB INTERCONTINENTAL

Located on the 2nd floor of the hotel, Club InterContinental is a haven away from the hustle and bustle. Here, guests enjoy private check-in, breakfast, afternoon tea, evening canapés, and all-day refreshments. Guests can also book a Club InterContinental Room and enjoy the added privilege of a premium service in a more intimate and exclusive lounge.



### THE SPA AND 24-HOUR GYM

The Spa takes an indulgent, holistic approach to wellbeing with its state-of-the-art facilities, acclaimed treatments, and a team of highly skilled and empathetic therapists.

*8 Treatment rooms, 17m indoor pool, sauna and steam room, 24hr gym, manicure & pedicure suite, and relaxation suite.*



## A DELICIOUS MIX OF DINING DESTINATIONS



### KINAARA

A unique, fine-dining Indian restaurant with magnificent views of the River Thames and London’s skyline. Also features an intimate private dining room.

*Capacity: 65 seated | Private dining: 24 seated*



### EIGHTEEN SKY BAR

A sophisticated 18th-floor cocktail bar featuring stunning floor-to-ceiling windows over London’s skyline.

*Capacity: 150 standing | 90 seated*



### CLIPPER BAR

A luxurious riverside bar with floor-to-ceiling windows offering extraordinary views and an exceptional drinks menu, including crafted cocktails and gourmet bites.

*Capacity: 250 standing | 85 seated*



### MARKET BRASSERIE

A relaxed dining space serving breakfast and dinner from a live working kitchen.

*Capacity: 185 seated*



### MERIDIAN LOUNGE

A stylish lounge serving light bites and beverages throughout the day, including traditional Afternoon Tea. The outdoor Meridian Terrace, can be enjoyed by our guests and is available for private hire.

*Capacity: 70 seated  
Terrace Capacity: 40 standing | 22 seated*

## FOR UNFORGETTABLE GATHERINGS OF ANY SHAPE OR SIZE

InterContinental London – The O2 features a customisable, purpose-built conference centre spanning over 4,500 sq.m.

Accessible from every floor of the hotel, it has diverse variety of over 30 flexible meeting rooms and two pillar free ballrooms creating a world of hosting possibilities.

Beyond the spectacular spaces, there is the unrivalled level of service that ensures every event is a unique experience and a resounding success. Our meetings and events experts, culinary team, and in-house audio-visual specialists are there to ensure your event's smooth set-up and running.

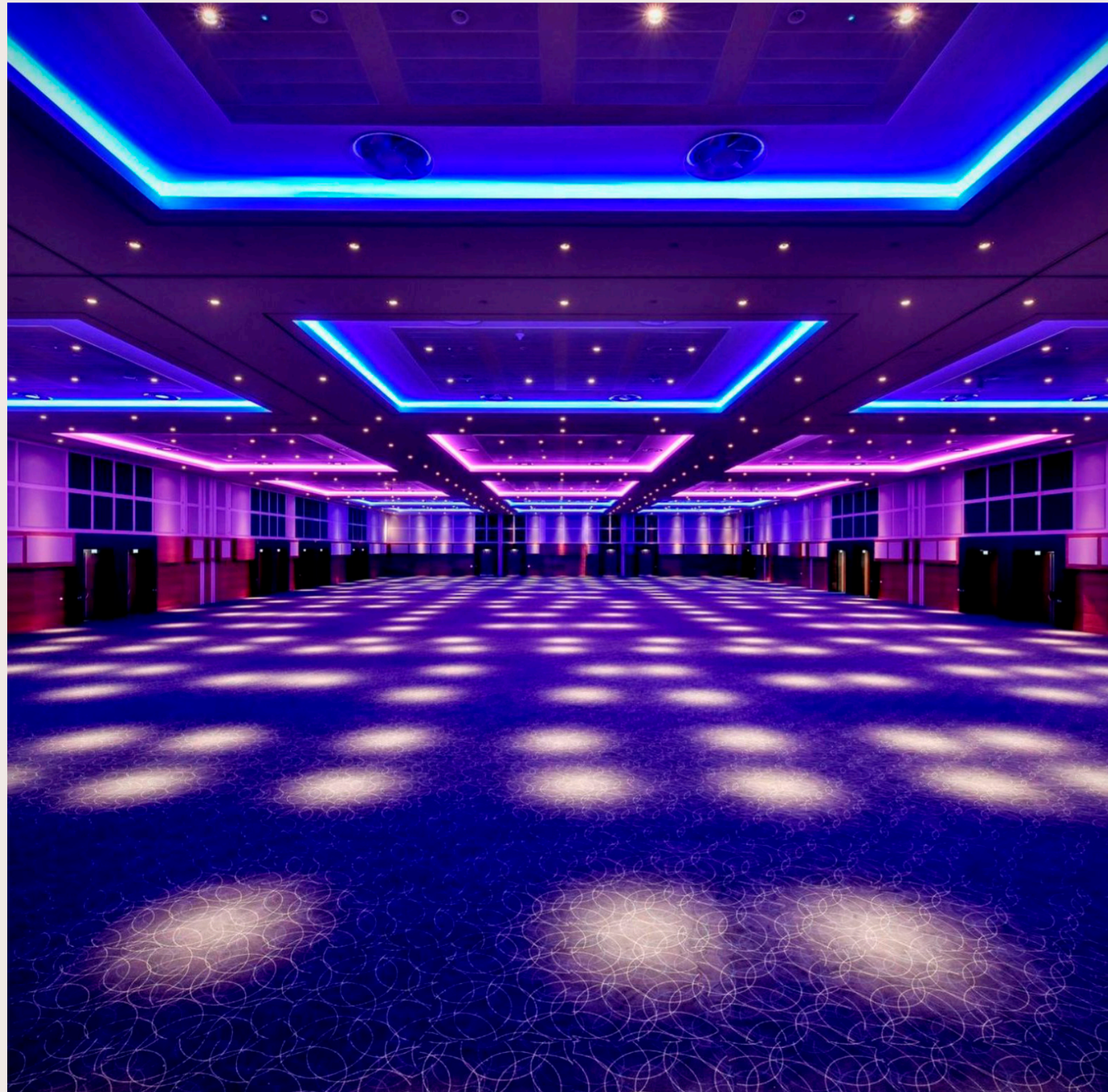


We are proud to be a destination of choice for industry leaders. From globally televised events to multi-layered conferences and intimate private functions, our spaces, technologies, and expertise position us as London's ultimate address for special gatherings.



## ARORA BALLROOM

Step inside the UK's largest pillar-free ballroom and see your event come to life. The Arora Ballroom can host up to 3,000 guests and is a leading destination in the U.K. for large-scale gala dinners, conferences, receptions, exhibitions, weddings, and banquets. Our in-house AV partner can support all audio-visual requirements and branding. Our highly experienced meeting and events team will ensure your event is smooth from start to finish.



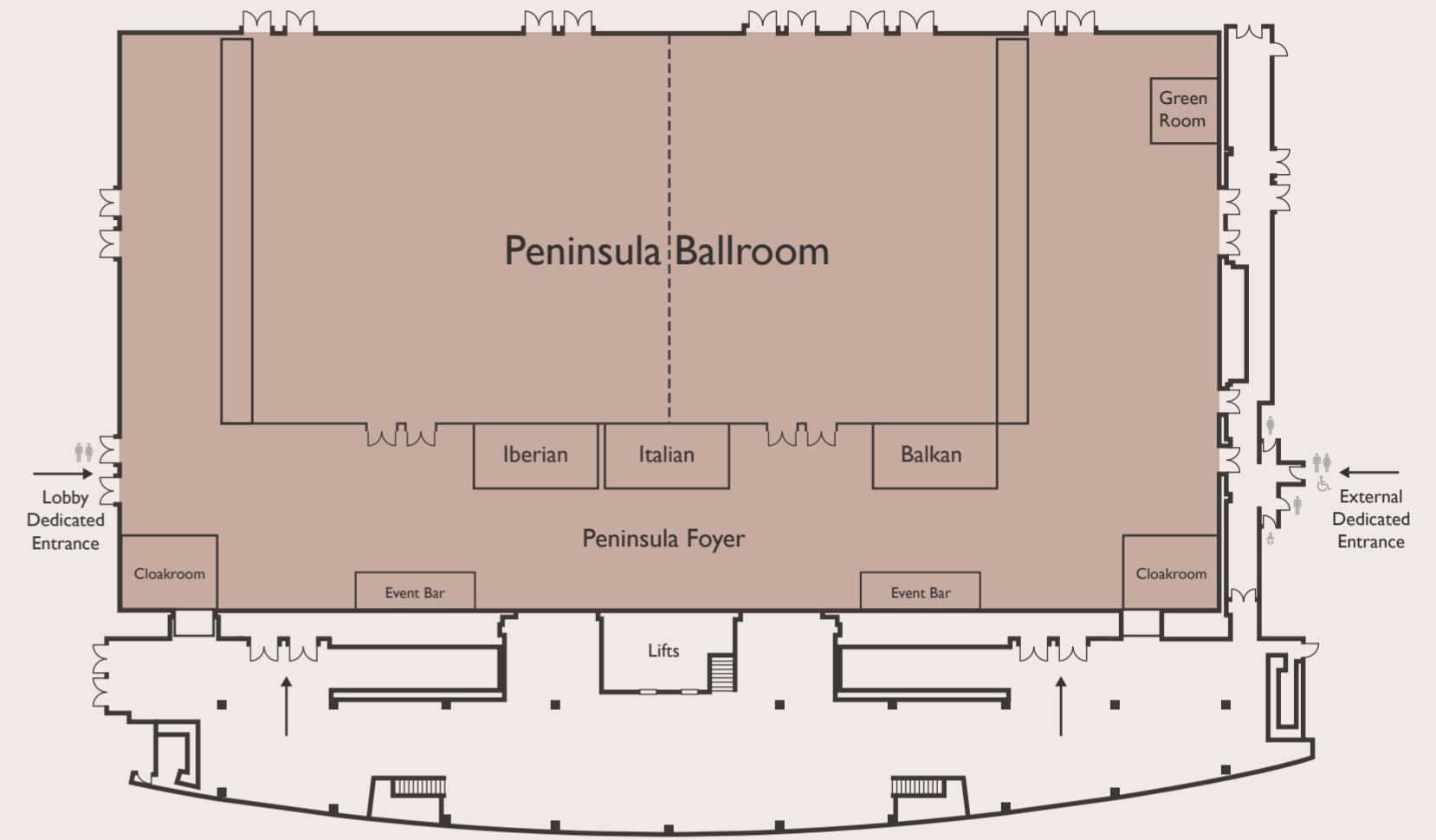
		Theatre (standing)	Banquet	Boardroom	Cabaret	Classroom	U-Shape	Area SQFT	Area SQM
Ground Floor	Ground Foyer	800	-	-	-	-	-	7,534	700
	Docklands	55	48	15	32	20	30	613	57
First Floor	Arora Foyer (Pre-Function Space)	900	-	-	-	-	-	9,117	847
	Arora Ballroom	3,100	2,520	-	1,720	1,700	-	32,431	3,013
	Arora 1-7 (East)	1,550	1,236	-	860	990	-	16,188	1,504
	Arora 1	640	500	-	288	360	-	6,598	613
	Arora 2	150	108	36	72	90	45	1,603	149.3
	Arora 3	150	108	36	72	90	45	1,646	153.9
	Arora 4	150	108	36	72	90	45	1,603	149.3
	Arora 2, 3, 4	450	324	-	216	270	-	4,865	452.5
	Arora 5	150	108	36	72	90	45	1,550	144.1
	Arora 6	150	108	36	72	90	45	1,593	148.5
	Arora 7	150	108	36	72	90	45	1,550	144.1
	Arora 5, 6, 7	450	324	-	216	270	-	4,693	436.7
	2&5   3&6   4&7	300	216	72	144	180	90	3,153	293.4
	Arora 1 & 11	1,280	1,000	-	620	720	-	13,196	1,226
	Arora 11-17 (West)	1,550	1,236	-	860	990	-	16,188	1,504
	Arora 11	640	500	-	288	360	-	6,598	613
	Arora 12	150	108	36	72	90	45	1,603	149.3
	Arora 13	150	108	36	72	90	45	1,646	153.9
	Arora 14	150	108	36	72	90	45	1,603	149.3
	Arora 12, 13, 14	450	324	-	216	270	-	4,865	452.5
Arora 15	150	108	36	72	90	45	1,550	144.1	
Arora 16	150	108	36	72	90	45	1,593	148.5	
Arora 17	150	108	36	72	90	45	1,550	144.1	
Arora 15, 16, 17	450	324	-	216	270	-	4,693	436.7	

## PENINSULA BALLROOM

From the moment you step through its private entrance, the journey begins in an art-deco-inspired pre-function foyer. This space, adorned with timeless charm, features two stylish bars and cloakrooms, providing an intimate setting for guests to connect, unwind, and set the tone for the events that await within the Peninsula Ballroom.

Boasting an expansive 1,300 square meters of space, the pillar-free Peninsula Ballroom can comfortably accommodate up to 1,700 guests. What distinguishes it, is its adaptability to be configured into two breakout rooms, each equipped with visual and lighting technology. Additionally, the ballroom offers three exclusive Boardroom Suites and a dedicated Green Room, ensuring a seamless blend of sophistication and functionality for any event.

Join us as we redefine event excellence with Peninsula Ballroom – where every detail is crafted to elevate your experience.

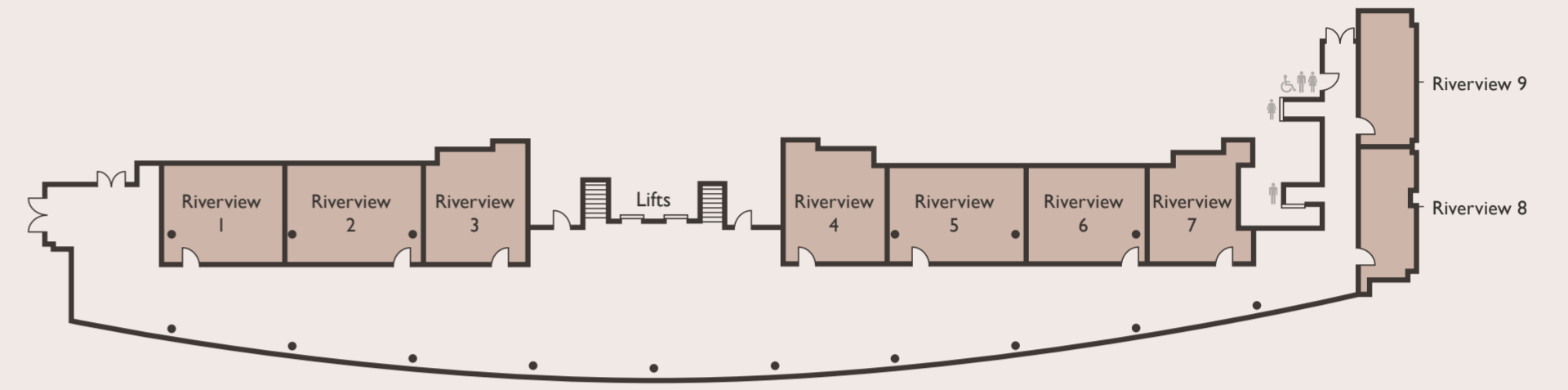


		Theatre (standing)	Banquet	Boardroom	Cabaret	Classroom	Area SQFT	Area SQM
Ground Floor	Peninsula Foyer (Pre-Function)	700	-	-	-	-	5,893.9	547.57
	Peninsula Ballroom	2,000	1,224	-	816	945	14,165.31	1,316
	Peninsula East	986	648	-	432	594	7,986.82	742
	Peninsula West	748	504	-	336	432	6,178.48	574
	Meeting Room I Iberian	-	-	10	-	-	414.4	38.5
	Meeting Room I Italian	-	-	10	-	-	362.9	33.71
	Meeting Room I Balkan	-	-	10	-	-	337.2	31.33



## RIVERVIEW SUITES

Enjoy floor-to-ceiling windows with views over the River Thames and Canary Wharf, providing the perfect backdrop for your event. The Riverview Suite can be split into ten syndicate spaces, perfect for extra breakout areas, meeting rooms, or office space to accompany the main event with built-in screens and projectors in many of the configurations. The Riverview Suite has 973 square metres of space and can host up to 800 guests.

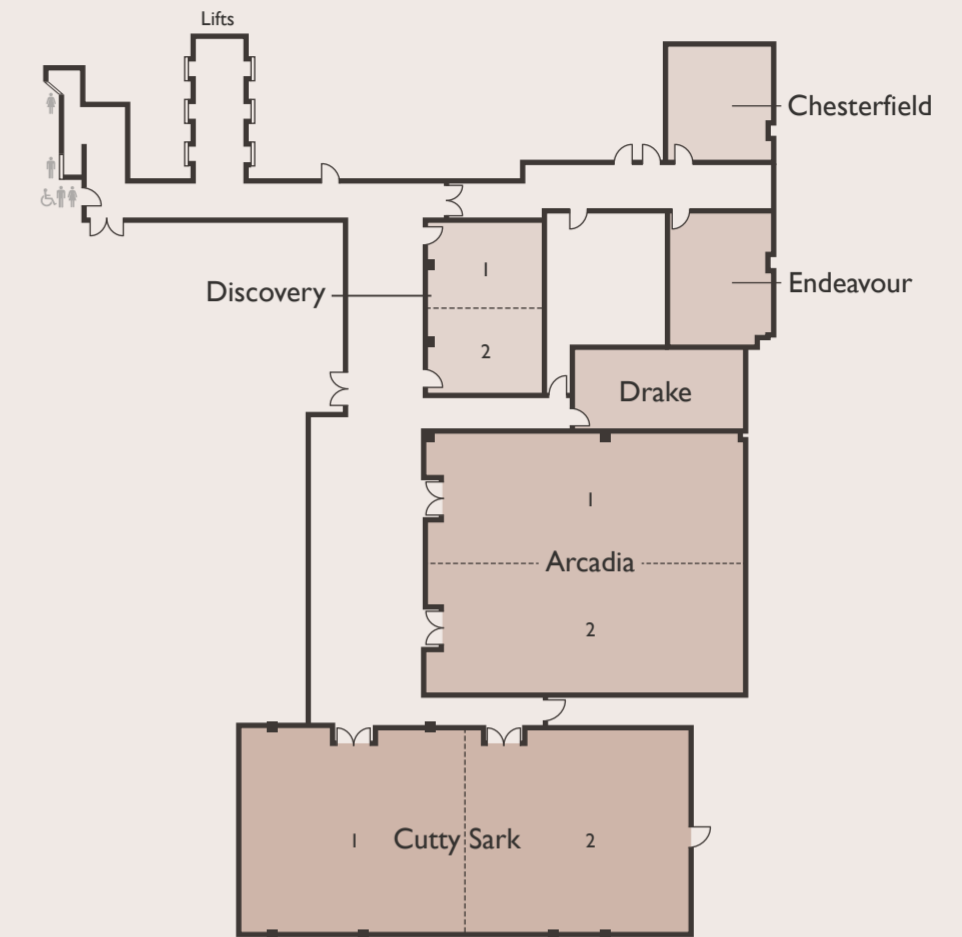


		Theatre (standing)	Banquet	Boardroom	Cabaret	Classroom	U-Shape	Area SQFT	Area SQM
Second Floor	Riverview Suite	800	480	-	430	450	-	10,473	973
Riverview Suite	Riverview Room 1	50	30	18	24	24	18	527.4	49.4
	Riverview Room 2	50	30	24	24	27	24	570.4	53.3
	Riverview Room 3	50	30	18	16	24	18	527.4	49.4
	Riverview Room 4	50	30	18	24	24	18	629.6	58.5
	Riverview Room 5	50	30	24	24	27	24	614.6	57.1
	Riverview Room 6	50	30	18	24	24	18	462.8	43.4
	Riverview Room 7	30	20	12	16	12	12	518.8	48.2
	Riverview Room 8	30	20	18	16	12	18	316.4	29.4
	Riverview Room 9	30	20	18	16	12	18	320	29.8



## GREENWICH SUITES

The ideal setting for small to medium-sized meetings, office space, training rooms, or breakout spaces for larger events at the hotel. Located on the second floor the Greenwich Suites are made up of nine versatile meeting spaces.



		Theatre (standing)	Banquet	Boardroom	Cabaret	Classroom	U-Shape	Area SQFT	Area SQM
Second Floor Greenwich Suites	Chesterfield	-	-	14	-	-	-	350	32.5
	Endeavour	-	-	14	-	-	-	405.7	37.7
	Drake	30	-	26	16	15	-	427.3	39.7
	Discovery	45	48	24	24	24	26	603.8	56.1
	Discovery 1	21	24	12	8	16	-	312.5	29
	Discovery 2	21	24	12	8	16	-	291.7	27.1
	Arcadia	220	192	72	96	192	72	2,583.3	240
	Arcadia 1	120	60	50	48	84	56	1,291.7	120
	Arcadia 2	120	60	50	48	84	56	1,291.7	120
	Cutty Sark	260	216	80	96	180	88	2,841.6	264
	Cutty Sark 1	130	96	34	48	72	44	1,420.8	132
Cutty Sark 2	130	96	34	48	72	44	1,420.8	132	

## PROUDLY CONNECTED TO THE O2



The hotel is directly linked to globally-renowned landmark, The O2 via a private walkway. This places us as the ultimate hosts for those visiting the world's most popular music and entertainment venue.

Packed with so much to do, see, and explore, The O2 offers experiences for fans of football, gaming, film, bowling, trampolining and so much more including Mamma Mia! The Party, an immersive dining experience. All this, plus over 30 bars and restaurants under one roof, makes The O2 an incredible destination to have on our doorstep.

## THE O2

The O2's programme of concerts, sports, tournaments, and live entertainment is peerless. And for those who have O2 priority membership, exclusive access to the AMEX Lounge makes the experience even more remarkable.



## OUTLET SHOPPING AT THE O2

A visit to Outlet Shopping at The O2 is a chance to save up to 70% on designer labels, including Adidas, Clarins, Calvin Klein, Guess, Kurt Geiger, and Tommy Hilfiger. It is open seven days a week across two spacious levels within The O2.



## TEAMBUILDING ACTIVITIES

Did you know that you can climb the roof of The O2? Award-winning roofwalk attraction, Up at The O2 is an unforgettable thrill to experience as a team. We offer a package that includes the climb at The O2 followed by afternoon tea at the hotel's Meridian Lounge.





# HOW TO REACH INTERCONTINENTAL LONDON – THE O2

## LONDON UNDERGROUND

North Greenwich Station (Jubilee Line): 5 mins walk

## RIVER BUS

Uber boat by Thames Clipper  
 North Greenwich Pier: 7 mins walk

**PARKING:** There is limited paid parking at the hotel for hotel guests. There is also nearby paid parking at NCP and Outlet Shopping at The O2.

## AIRPORTS

London City Airport: 25 mins drive  
 London Gatwick Airport: 70 mins drive  
 London Heathrow Airport: 90 mins drive  
 London Luton Airport: 68 mins drive  
 London Stanstead Airport: 48 mins drive

We are proud to offer 12 Tesla charging stations to guests with Tesla electric vehicles.



InterContinental London – The O2  
Address: 1 Waterview Drive,  
Greenwich Peninsula, SE10 0TW  
Telephone: +44 (0)20 8463 6868  
Email: [meetings@iclondon-theo2.com](mailto:meetings@iclondon-theo2.com)  
Website: [iclondon-theo2.com](http://iclondon-theo2.com)

CONNECT WITH US



INTERCONTINENTAL®  
LONDON – THE O2