



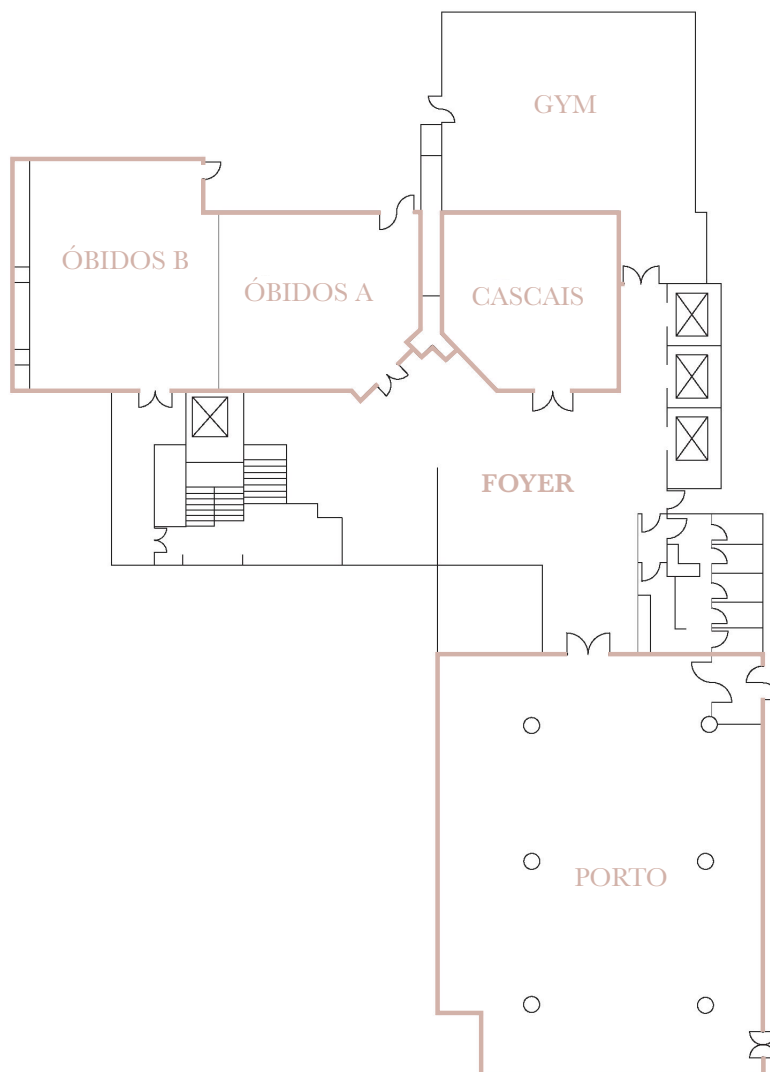
INTERCONTINENTAL®

LISBON



FLOOR PLAN GROUND FLOOR

The Ground Floor presents several possibilities regarding meetings and events - you will be able to find four meeting rooms with varying sizes; a hall fit for receptions, coffee breaks or welcome desks.
On this floor we also have our Gym available, 24H.

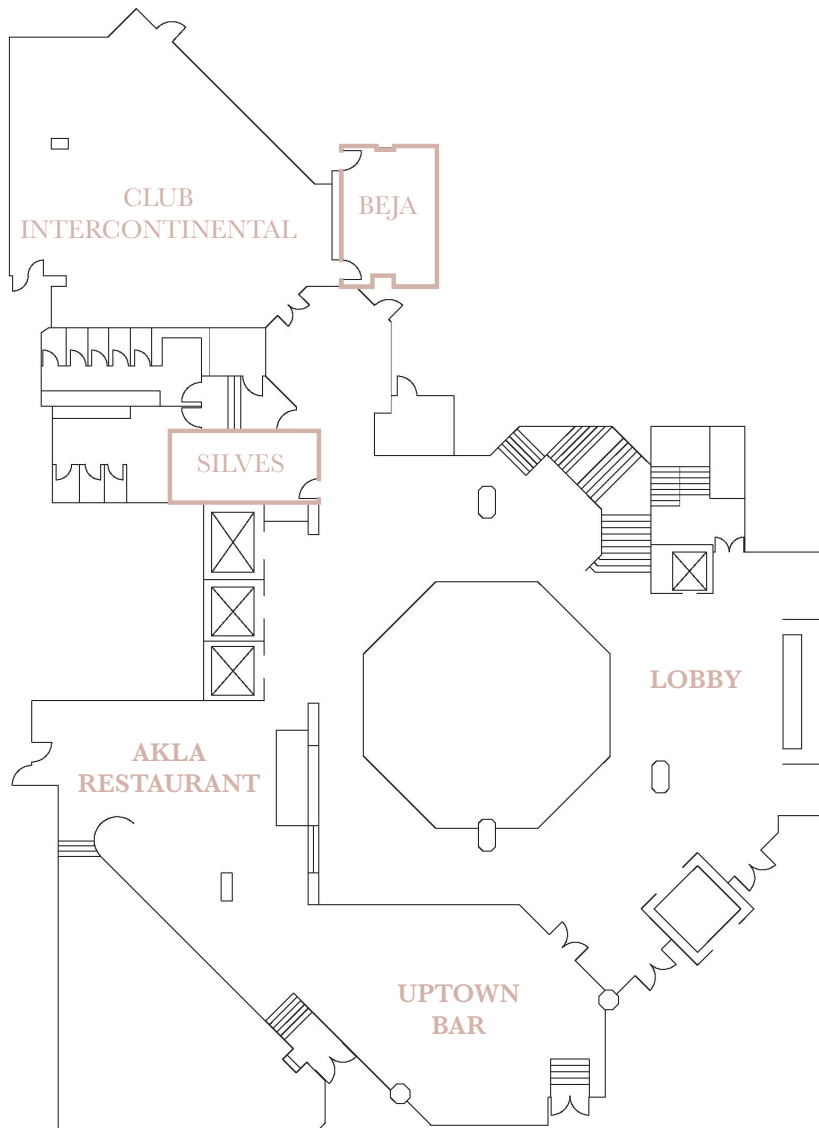




INTERCONTINENTAL®
LISBON

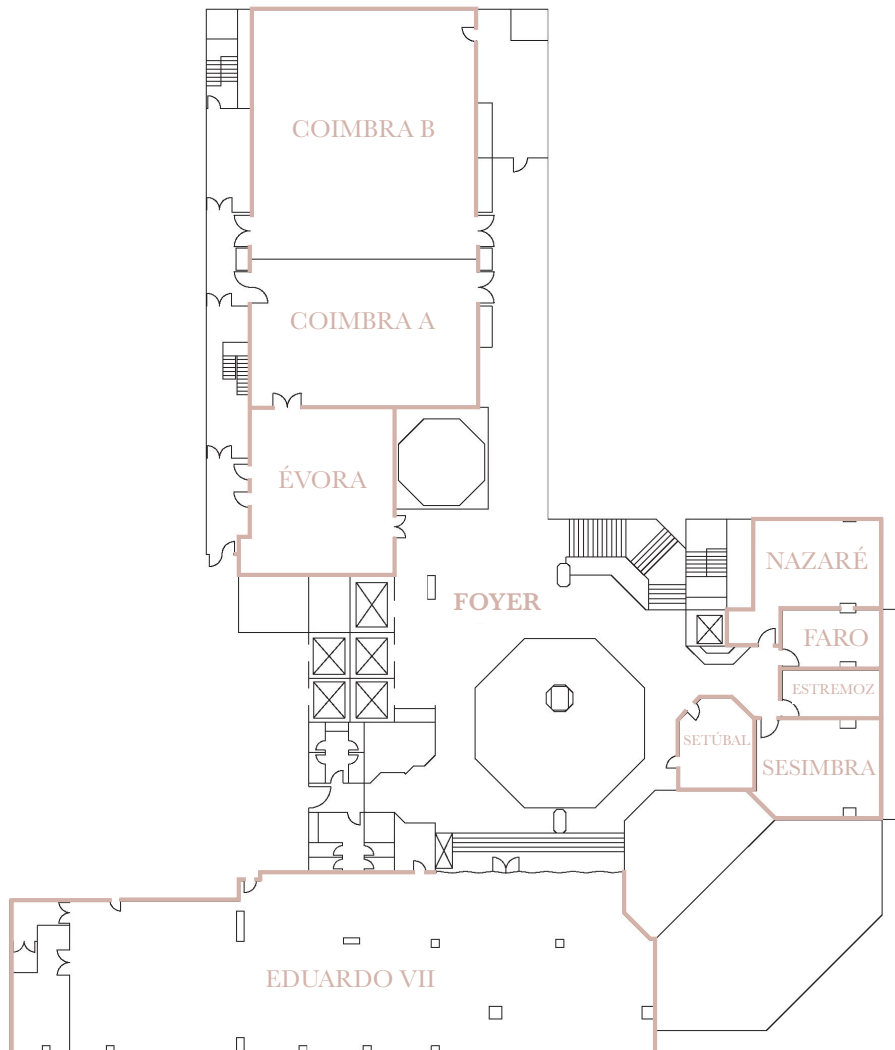
FLOOR PLAN LOBBY

On this Floor, in addition to the Reception, the hotel has two outlets available: the Akla Restaurant and the Uptown Bar. The Restaurant presents a variety of dishes that combine Portuguese flavours with the international expertise of our Chef, Eddy Melo. On the other hand you will also find the Uptown Bar, a cosmopolitan and elegant space, where guests will be able to taste signature cocktails, a glass of wine or a soft drink.



FLOOR PLAN SECOND FLOOR

The Second Floor presents the hotel's largest meeting rooms, Coimbra A and Coimbra B, that can also be combined together. In addition, we have six other meeting rooms, with different capacities, including four breakout rooms with natural daylight and a view over Park Eduardo VII. The large foyer offers the perfect space for coffee breaks and welcome receptions. The Eduardo VII room is the breakfast area, and also the perfect space for group meals.



FLOOR PLAN CAPACITY

MEETINGS & EVENTS



The InterContinental Lisbon has the perfect location for meetings, conferences, corporate and social events. Whether you are looking for a space for a congress, product launch, meeting or social event such as weddings and other celebrations, you will find here the ideal spaces for any occasion, with a tailored and flexible service.

- Ballroom with 360 sqm and 5,5m ceiling height
(One of Lisbon's highest ballroom ceilings)
- Large foyer with daylight and a capacity for up to 330 people in cocktail.
- 5 meeting rooms with daylight.
- Private area for group meals up to 200 people.
- High tech audiovisual equipment.

EVENTS & CONFERENCES

Function Rooms	Floor	Size sqm. sqft.	Height mt. ft.	Lenght x With m. ft.	Theatre	Classroom	U-shape	Boardroom	Banquet	Banquet w/ Buffet	Cabaret	Cocktail
Coimbra A+B*	2	360 3875	5,5 16,4	25,2x14,2 82,7x46,6	450	210	80	70	336	264	192	500
Coimbra A*	2	135 1453	5,5 16,4	14,2x9,4 46,6x30,8	120	84	45	40	126	92	64	150
Coimbra B*	2	225 2421	5,5 16,4	15,8x14,2 51,8x46,6	250	140	63	46	192	144	98	280
Évora	2	92,2 990	2,65 6,56	10,7x8,9 35,1x29,2	80	56	30	28	92	60	40	80
Sesimbra	2	47 506	2,95 6,56	8,1x5,7 26,6x18,7	35	23	23	20	30	20	24	30
Nazaré	2	47 506	2,95 6,56	8,1x5,7 26,6x18,7	35	23	23	20	30	20	24	30
Faro	2	22,5 237	2,95 6,56	6,1x3,7 26,6x12,1	15	-	-	10	10	-	8	15
Estremoz	2	22,5 237	2,95 6,56	8,1x5,7 26,6x12,1	15	-	-	10	10	-	8	15
Setúbal	2	26,4 280	2,95 6,56	5,9x4,6 19,4x15,1	15	-	-	10	10	-	8	-
Eduardo VII	2	353 3800	2,65 6,56	35x10 114,8x32,8	-	-	-	-	-	200	-	300
Silves	1	20 215	2,9 6,56	7x3,3 23x10,8	-	-	-	10	-	-	-	-
Porto*	0	252 2713	3,25 9,84	18,2x13,9 59,7x45,6	150	90	45	42	192	168	96	250
Óbidos A+B*	0	151 1625	3,51 9,84	17,2x8,78 56,4x28,8	120	80	44	44	120	96	64	140
Óbidos A*	0	75 807	3,15 9,84	9,8x7,7 32,2x25,3	60	30	27	24	40	36	24	60
Óbidos B*	0	76 818	3,15 9,84	7,4x10,2 24,3x33,5	60	40	30	28	60	48	32	80
Cascais	0	59 636	2,7 6,56	4,2x7,15 13,7x23,4	40	27	12	20	24	-	24	-

*These meeting room capacities include stage.



INTERCONTINENTAL®
LISBON

InterContinental Lisbon

Rua Castilho 149, 1099-034 Lisbon – Portugal

Tel: +351 213 818 700 | lisha.sales@ihg.com | www.iclisbonhotel.com