



INTERCONTINENTAL®

LISBON



FACTSHEET

LOCATION

Located in Lisbon's City Centre, and with an outstanding view overlooking the Eduardo VII Park and the Tagus River, the InterContinental Lisbon is the perfect place to stay while visiting the Portuguese capital. The proximity to Lisbon's Airport, as well as several museums, monuments and breath-taking viewpoints, make this hotel a unique venue – whether you are on vacation, business trip, or organizing an event with us. All our guests are guaranteed to find here the perfect place to stay and explore the city.

CONTACTS

InterContinental Lisbon
Rua Castilho 149, 1099-034 Lisbon – Portugal
Tel: +351 213 818 700 | lisha.reservations@ihg.com | www.iclisbonhotel.com

ROOMS & SUITES

The rooms at InterContinental Lisbon provide a calm and serene atmosphere, whilst combining luxury and comfort. The décor, mainly minimalist, follows a line of neutral tones, with some blue highlights that balance everything evenly. The 331 rooms and suites were all renovated in 2019, and are divided as follows:

ROOMS

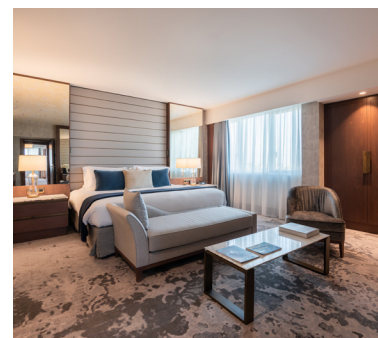
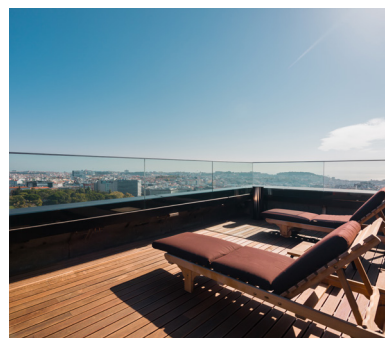
All rooms have 34 m²

Classic City View • Classic River View • Classic High Floor • Terrace Rooms • Family Rooms (70m²)



SUITES

7 Junior Suites • 2 Two Storey Suites • 2 Two Storey Suites with Terrace • 1 One Bedroom Suite
1 One Bedroom Suite with Terrace • 2 Prestige Suites • 1 Two Bedroom Suite • 1 Panoramic Suite



AKLA RESTAURANT

In the lobby area, guests will find the Akla Restaurant, featuring a spacious layout and modern design, combined with elegant décor and traditional Portuguese tiles. Here, guests can experience local flavours thoughtfully combined with international culinary techniques, in a concept where flavours take centre stage.



DETAILS

Ground Floor • Capacity: 75 persons • Lunch: 12:00 – 15:00 • Dinner: 18:30 – 22:30
Lunch and Dinner à La Carte (everyday) or Executive Lunch Menu (week days)

Week days Executive Lunch Menu

€ 26,00 per person | Including Soup; Main; Dessert; House Wine and Coffee

Sundays: Brunch

Available from 12:00 to 15:00 • € 36,00 per person

Chef's Table

Minimum 4 people and maximum 6 • 24 hours in advance
"Petiscos à Lisboeta" Menu: € 68,00 menu + € 20,00 Wine Pairing

UPTOWN BAR

The Uptown Bar is a cosmopolitan and elegant space, where guests will be able to taste signature cocktails, a glass of wine or a soft drink – and maybe show their dancing moves.

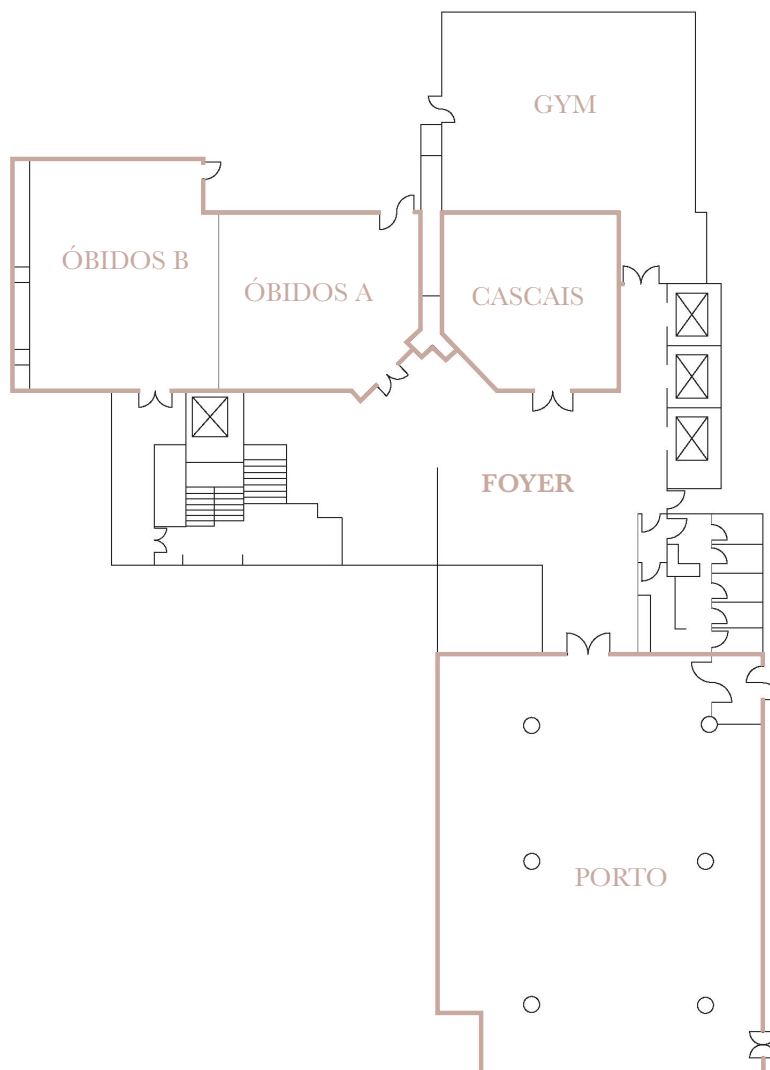
DETAILS

Ground Floor • Capacity: 35 seated | 50 cocktail • Schedule: 16:00 – 01:00



FLOOR PLAN GROUND FLOOR

The Ground Floor presents several possibilities regarding meetings and events - you will be able to find four meeting rooms with varying sizes; a hall fit for receptions, coffee breaks or welcome desks.
On this floor we also have our Gym available, 24H.

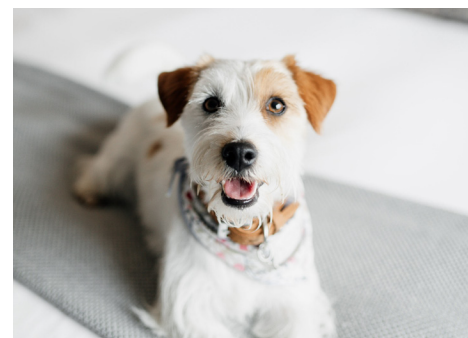
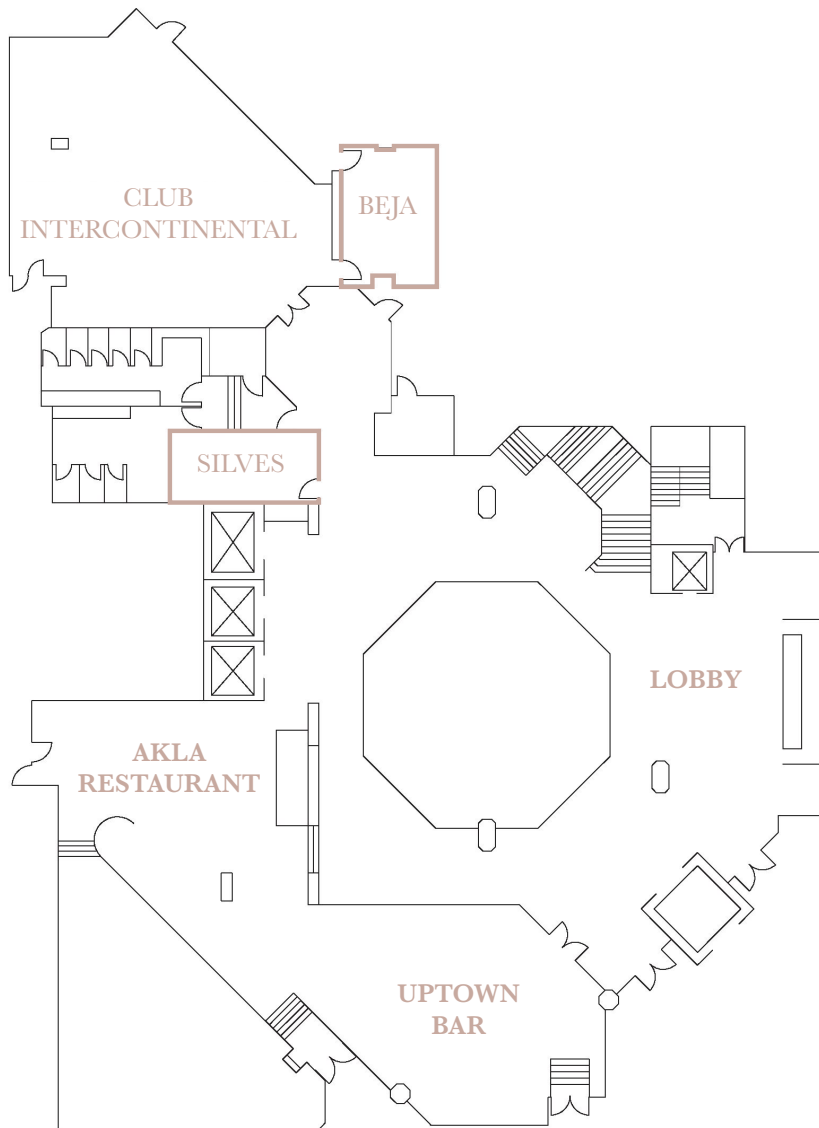




INTERCONTINENTAL®
LISBON

FLOOR PLAN LOBBY

On this floor, in addition to the Reception, the hotel offers two outlets: the Akla Restaurant and the Uptown Bar. The restaurant presents a variety of dishes that combine Portuguese flavours with international culinary influences. On the other hand, the Uptown Bar is a cosmopolitan and elegant space, where guests can enjoy signature cocktails, a glass of wine or a soft drink.

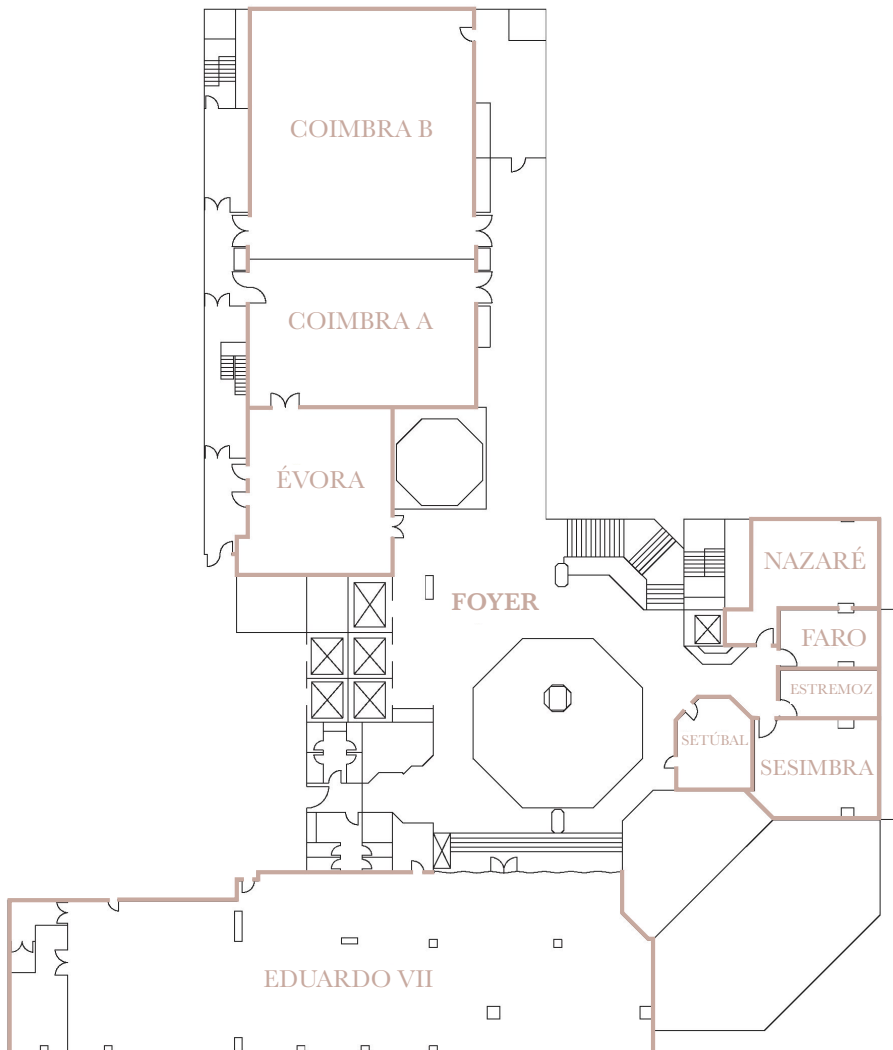




INTERCONTINENTAL®
LISBON

FLOOR PLAN SECOND FLOOR

The Second Floor presents the hotel's largest meeting rooms, Coimbra A and Coimbra B, that can also be combined together. In addition, we have six other meeting rooms, with different capacities, including four breakout rooms with natural daylight and a view over Park Eduardo VII. The large foyer offers the perfect space for coffee breaks and welcome receptions. The Eduardo VII room is the breakfast area, and also the perfect space for group meals.



FLOOR PLAN CAPACITY

MEETINGS & EVENTS



The InterContinental Lisbon has the perfect location for meetings, conferences, corporate and social events. Whether you are looking for a space for a congress, product launch, meeting or social event such as weddings and other celebrations, you will find here the ideal spaces for any occasion, with a tailored and flexible service.

- Ballroom with 360 sqm and 5,5m ceiling height
(One of Lisbon's highest ballroom ceilings)
- Large foyer with daylight and a capacity for up to 330 people in cocktail.
- 5 meeting rooms with daylight.
- Private area for group meals up to 200 people.
- High tech audiovisual equipment.

EVENTS & CONFERENCES

Function Rooms	Floor	Size sqm. sqf.	Height mt. ft.	Lenght x With m. ft.	Theatre	Classroom	U-shape	Boardroom	Banquet	Banquet w/ Buffet	Cabaret	Cocktail
Coimbra A+B*	2	360 3875	5,5 18	25,2x14,2 82,7x46,6	450	210	80	70	336	264	192	500
Coimbra A*	2	135 1453	5,5 18	14,2x9,4 46,6x30,8	120	84	45	40	126	92	64	150
Coimbra B*	2	225 2421	5,5 18	15,8x14,2 51,8x46,6	250	140	63	46	192	144	98	280
Évora	2	92,2 990	2,65 8,6	10,7x8,9 35,1x29,2	80	56	30	28	92	60	40	80
Sesimbra	2	47 506	2,95 9,7	8,1x5,7 26,6x18,7	35	23	23	20	30	20	24	30
Nazaré	2	47 506	2,95 9,7	8,1x5,7 26,6x18,7	35	23	23	20	30	20	24	30
Faro	2	22,5 242	2,95 9,7	6,1x3,7 20,1x12,1	15	-	-	10	10	-	8	15
Estremoz	2	22,5 242	2,95 9,7	6,1x3,7 20,1x12,1	15	-	-	10	10	-	8	15
Setúbal	2	26,4 280	2,95 9,7	5,9x4,6 19,4x15,1	15	-	-	10	10	-	8	-
Eduardo VII	2	353 3800	2,65 8,7	35x10 114,8x32,8	-	-	-	-	-	200	-	300
Silves	1	20 215	2,9 9,5	7x3,3 23x10,8	-	-	-	10	-	-	-	-
Porto*	0	252 2713	3,25 10,7	18,2x13,9 59,7x45,6	150	90	45	42	192	168	96	250
Óbidos A+B*	0	151 1625	3,15 10,4	17,2x8,78 56,4x28,8	120	80	44	44	120	96	64	140
Óbidos A*	0	75 807	3,15 10,4	9,8x7,7 32,2x25,3	60	30	27	24	40	36	24	60
Óbidos B*	0	76 818	3,15 10,4	7,4x10,2 24,3x33,5	60	40	30	28	60	48	32	80
Cascais	0	59 636	2,7 8,9	4,2x7,15 13,7x23,4	40	27	12	20	24	-	24	-

*These meeting room capacities include stage.



INTERCONTINENTAL®
LISBON

InterContinental Lisbon

Rua Castilho 149, 1099-034 Lisbon – Portugal

Tel: +351 213 818 700 | lisha.sales@ihg.com | www.iclisbonhotel.com