

WELCOME TO



INTERCONTINENTAL.
KUALA LUMPUR





InterContinental Kuala Lumpur is located in the heart of Kuala Lumpur city's prominent KLCC address. An ideal destination for both leisure and business travellers, the hotel is situated just 45 to 60 minutes away from both the Kuala Lumpur International Airports and a stone's throw away from the iconic Petronas Twin Towers, the city's business district and numerous shopping areas.

The hotel features 473 guest rooms, glamorous event spaces, world-class dining establishments and facilities showcasing contemporary luxury at its best. Combining Malaysian hospitality with our Insider Expertise, InterContinental Kuala Lumpur is a prime destination for luxury and business travel.

THE INTERCONTINENTAL CONCIERGE

Get the most out of your stay with our expert concierge team who are ready to share their vast local knowledge of the city, connecting you to the best of what Kuala Lumpur has to offer:

- Petronas Twin Towers
- The Exchange, TRX
- Bukit Bintang
- Central Market (Pasar Seni)
- Petaling Street (Chinatown)
- Thean Hou Temple
- Masjid Jamek
- Brickfields (Little India)
- Batu Caves

HOTEL FACILITIES

Swimming Pool: Surrounded by lush tropical landscape, take a leisurely dip, sunbathe or enjoy a cold beverage by the water. A wading pool is available for children. Open from 7am to 9pm daily.

Fitness Centre: Well-equipped with the latest generation of cardio and strength training machines. Keycard-accessible 24 hours daily.

Spa: Unwind and rejuvenate at Jade Heritage Spa with a wide array of massage and therapy offerings. Open from 11am to 11pm daily.

Surau: Spacious and convenient space catered to our Muslim guests. Prayer mats are available. Accessible 24 hours daily.

Shuttle Service: Complimentary scheduled shuttle service to Kuala Lumpur City Centre, Bukit Bintang, and the city's business district area.

Electric Vehicle (EV) Charging: Four EV charging stations are conveniently located at the hotel porte cochère and Basement 1 carpark, for guests driving electric vehicles.

GETTING HERE

- 45 to 60 minutes from both Kuala Lumpur International Airports (KLIA & KLIA2)
- 35 minutes by KLIA Airport Express & Light Rail Transit (LRT) via KL Sentral station
- A five-minute walk from KLCC, the business district, embassies, shopping and entertainment venues.
- 100m to Ampang Park LRT station
- 230m to Persiaran KLCC MRT station



EXPERIENCE LUXURY

THROUGHOUT YOUR STAY



GUEST ROOMS AND SUITES

InterContinental Kuala Lumpur offers 473 spacious and stylish guest rooms and suites. Guests are welcomed by Super King-sized or Super Single beds, and warm relaxing tones with plush fabrics and furnishings; a perfect balance of elegance and comfort.

- 42 sqm to 253 sqm
- Individual air-conditioning
- High speed wireless internet access
- Large LED TV with local & cable channels
- Luxury bath amenities
- King & Twin Rooms, with preferred pillow choice
- Bathtub & separate walk-in rain shower
- Minibar with coffee & tea-making facilities
- Hair dryer, in-room safe, bathrobes, iron & ironing board
- 24-hour in-room dining
- Ergonomic working station with multimedia hub

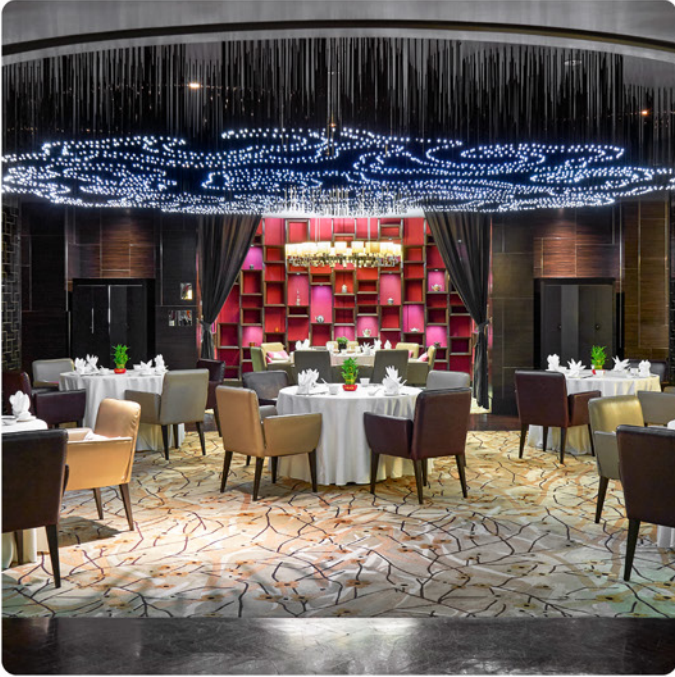
CLUB INTERCONTINENTAL

Located on the 26th floor, the award-winning Club InterContinental combines exclusive privileges with personal service to care for your every need. Designed with luxury, comfort and Intentional Flexibility in mind, the stylish lounge is perfect for exclusive social or business interactions. Enjoy daily breakfast, three-tiered afternoon high tea, evening cocktail hour with themed hors d'oeuvres and free-flow beverages throughout the day. High speed internet access, complimentary usage of the club boardroom with a maximum of 12 persons, as well as complimentary pressing and laundry services are just a few of its many privileges.



DINING

INCLUSIVE & DIVERSE CUISINES



TAO CHINESE CUISINE

Feast on an exquisite array of well-loved and honest Cantonese flavours, with the Hong Kong-style Roasted London Duck, Stir-fried Australian Beef Tenderloin, Traditional Peking London Duck and a delectable dim sum selection. Guests can enjoy award-winning Muslim-friendly creations, perfectly fusing traditional Chinese cuisine with a modern twist. Dine under the starry lights in the main dining area or in private, in one of the six exclusive private rooms. Open daily.

TATSU JAPANESE CUISINE

This restaurant combines a subtle blend of Japanese aesthetics with a contemporary, minimalist design across the sushi bar, teppanyaki counter, main dining room, cozy lounge and bar as well as four private dining rooms suitable for executive meetings. Savour authentic Japanese cuisine and exquisite omakase experiences crafted with the freshest premium air-flown ingredients such as seafood, Wagyu beef, and fruit from the land of the rising sun. Open daily.

SERENA BRASSERIE

Set amidst a relaxing Koi garden with a cascading waterfall, this restaurant offers guests bountiful buffet spreads and an à la carte menu of local and international delicacies. Pulling inspiration from Malay, Chinese, and Indian cuisines, Serena Brasserie provides diners an experience that is sure to please the senses. An alfresco area is available. Open daily.

ONESIXFIVE LOUNGE

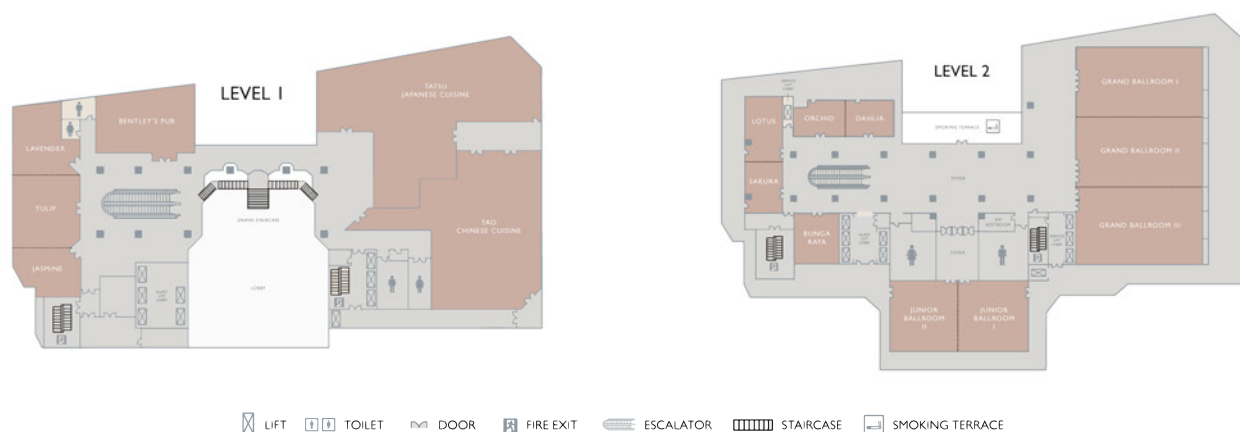
A stylish and chic destination to mingle and unwind while enjoying light refreshments of freshly baked cakes and sandwiches made daily. The lounge also features its signature Royal High Tea sets with Beef Wellington and pastries, paired with a variety of fine teas. End the day's activities with ambient lighting and sounds of smooth instrumental live music while sipping on handcrafted cocktails and wines. Open daily.

BENTLEY'S PUB

The traditional English-style pub is the perfect place to meet up after work. Ideal for welcome receptions before your event or after-dinner drinks, for a casual post-event catch-up. The pub offers Cuban and Davidoff cigars, live sports screenings, a dart area and a variety of beers on tap, wine by the glass and cocktails. Open daily.

INCREDIBLE OCCASIONS

InterContinental Kuala Lumpur is an award-winning meetings & events destination, offering a high-ceiling, pillarless Grand Ballroom, Junior Ballroom and nine well-equipped, flexible meeting rooms with superior technical support including high-speed internet coverage and video-conferencing. With their contemporary and luxurious interior, our ballrooms are the perfect venues for memorable dinners, gala events, and stylish weddings.



Function Rooms	Level	Size (sqm)	Theatre	Classroom	Banquet	U-shape	Boardroom	Dimensions (m) Length x Width	Height (m)
Grand Ballroom	2	936	1,300	500	650	129	129	24 X 39	9
Ballroom I/2/3	2	336	300	140	220	69	69	24 X 14	9
Ballroom 1&2/2&3	2	624	600	350	350	94	81	26 X 24	9
Junior Ballroom	2	312	250	150	220	60	63	13 X 24	8
Junior 1/2	2	156	100	48	90	42	39	13 X 12	8

Function Rooms	Level	Size (sqm)	Theatre	Classroom	Banquet	U-shape	Boardroom	Dimensions (m) Length x Width	Height (m)
Bunga Raya	2	80	50	36	50	25	17	10 X 8	3
Sakura	2	63	28	24	30	19	15	7 X 9	3
Lotus	2	84	50	36	60	31	27	7 X 12	3
Sakura & Lotus	2	147	100	60	100	42	45	7 X 21	3
Orchid	2	64	40	18	40	20	18	8 X 8	3
Dahlia	2	64	40	18	40	20	18	8 X 8	3
Orchid & Dahlia	2	120	100	70	100	42	39	8 X 15	3
Lavender	1	100	50	36	60	21	18	10 X 10	3
Tulip	1	110	50	36	50	21	24	10 X 11	3
Jasmine	1	36	24	12	10	15	12	6 X 6	3
Maple	G	63	35	18	40	15	15	9 X 7	3



InterContinental Kuala Lumpur
165 Jalan Ampang
50450, Kuala Lumpur, Malaysia

intercontinental.kualalumpur@ihg.com
T: +603 2782 6000

KualaLumpur.InterContinental.com

 InterContinental Kuala Lumpur
 [@InterContinental.KualaLumpur](https://www.instagram.com/InterContinental.KualaLumpur)
 [@马来西亚吉隆坡洲际酒店](https://www.weibo.com/InterContinental.KualaLumpur)