

WELCOME TO

HOTEL BRISTOL BERLIN

BANQUET OVERVIEW












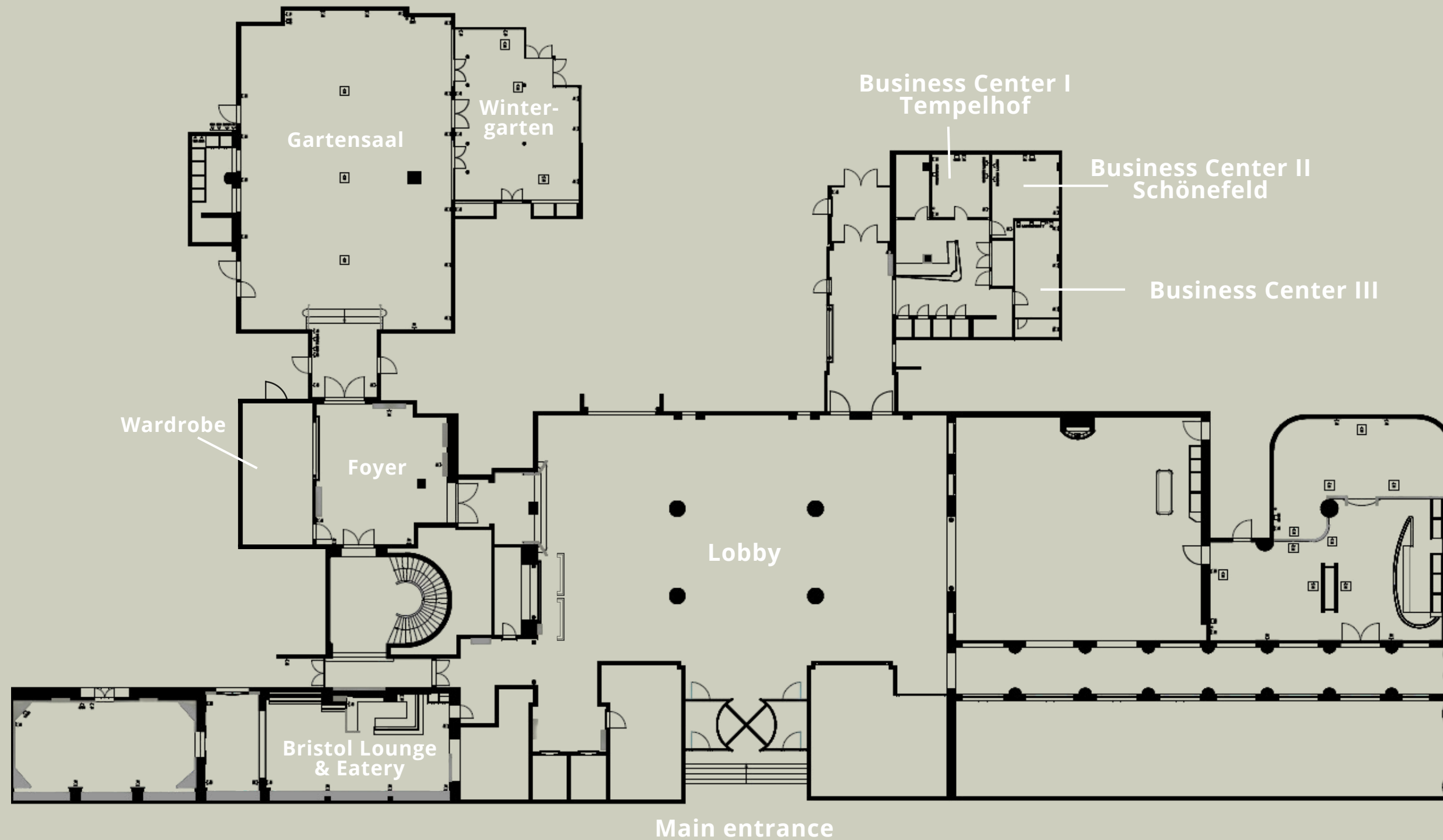
MEETING & BANQUET ROOMS

MEETING & BANQUET ROOMS | CONFERENCE & EVENTS | ACCOMODATION | FOOD & DRINKS | WELLNESS | OVERALL INFORMATION

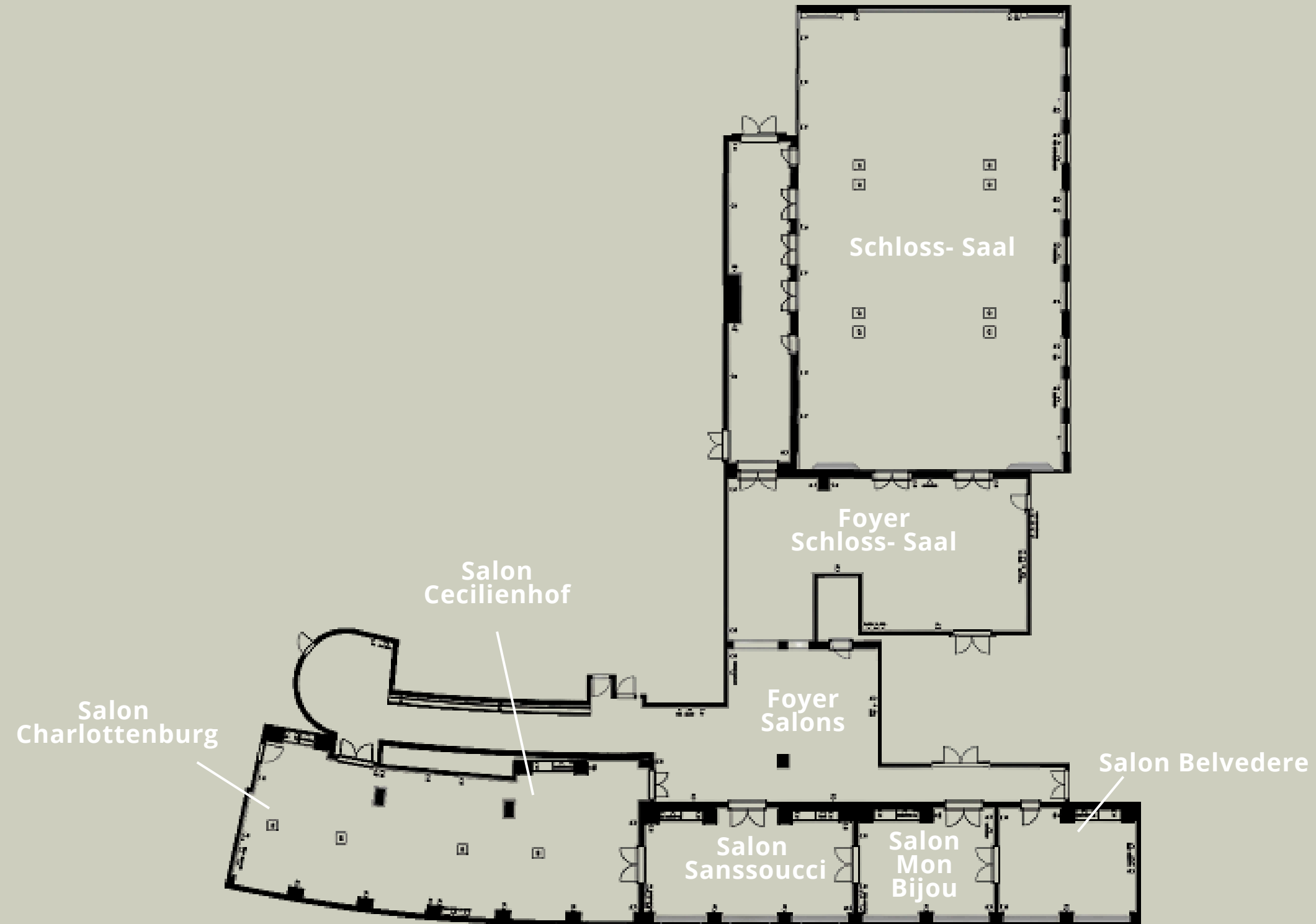
Overview

Conference room	Area sqm	Height m	Length m	Width m							
Salon Belvedere	40	3,1	7,13	5,4	25	18	12	20	25	16	15
Salon Monbijou	40	3,1	7,10	5,4	25	18	12	20	25	16	15
Salon Sanssouci	60	3,1	10,7	5,4	40	30	18	30	35	30	27
Salon Cecilienhof	83	3,1	10,4	7,95	40	24	18	30	35	30	21
Salon Charlottenbu	83	3,1	10,5	7,95	40	24	24	40	50	22	21
Salons Cecilienhof and Charlottenburg	166	3,1	20,9	7,95	84	50	48	80	120	48	44
Schloss-Saal	330	4,4	23,8	13,85	300	200	132	200	500	82	70
Gartensaal	230	3	12,67	18,64	130	84	54	120	220	50	40
Wintergarten	73	3	7,34	10,05	-	-	-	30	50	-	-

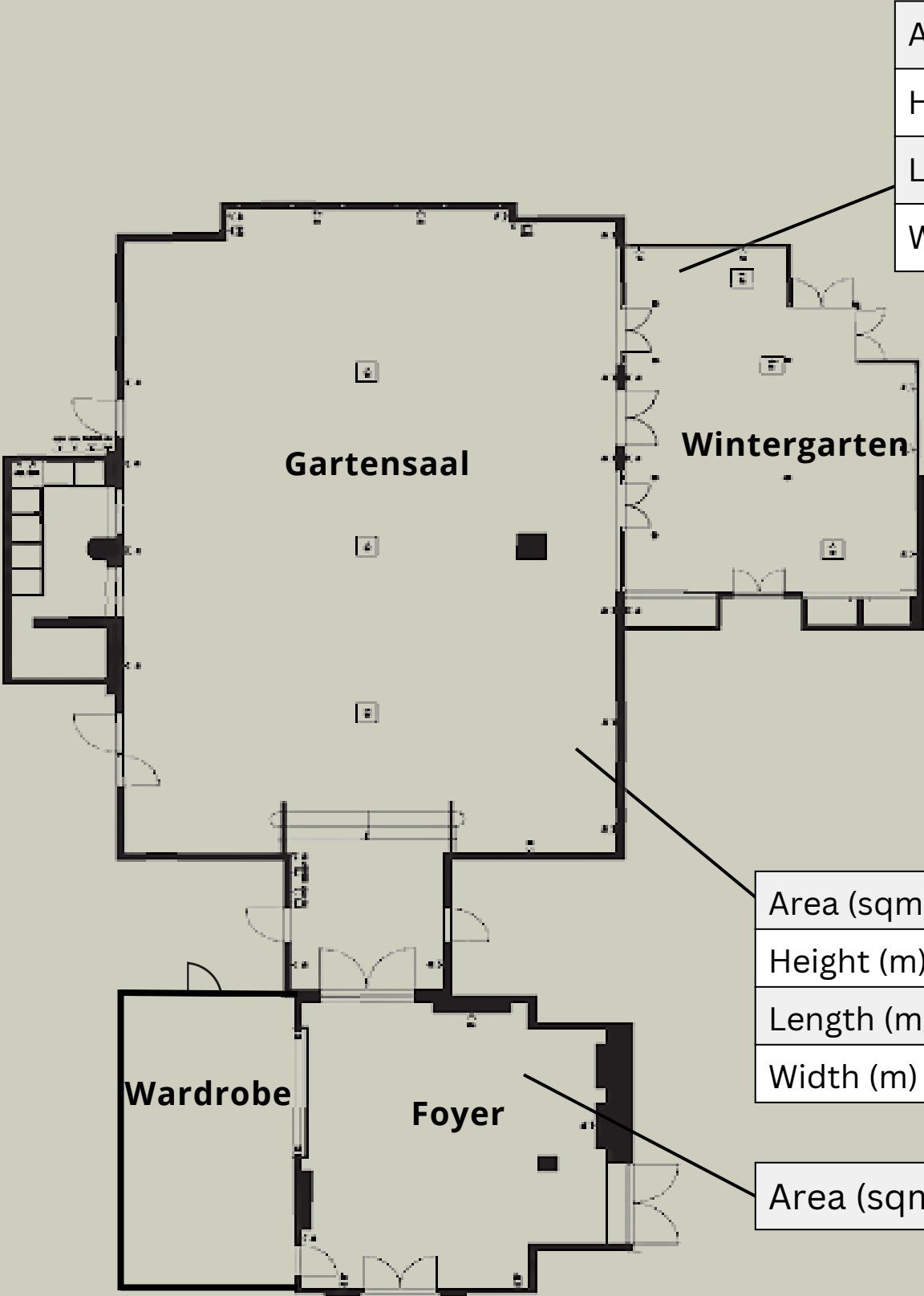
Outline - Ground floor



Outline - 1. Floor



Gartensaal & Wintergarten



Area (sqm)	78
Height (m)	3
Length (m)	7.34
Width (m)	10.05

Area (sqm)	230
Height (m)	3
Length (m)	12.67
Width (m)	18.64

Area (sqm)	68
------------	----

Salon Belvedere, Salon Mon Bijou & Salon Sanssouci



Area (sqm)	40
Height (m)	3.1
Length (m)	7.1
Width(m)	5.4

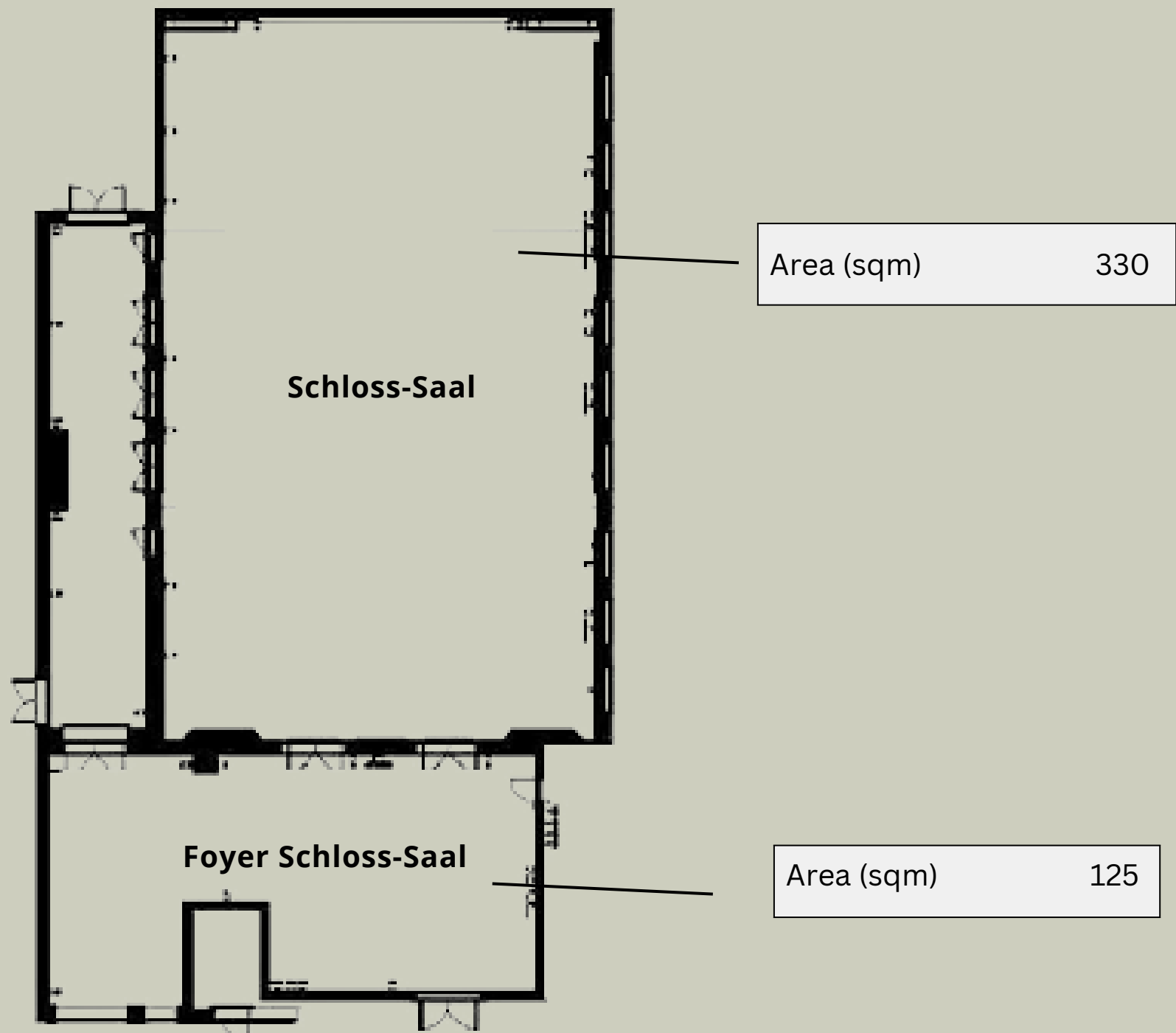


Area (sqm)	60
Height (m)	3.1
Length (m)	10.9
Width (m)	5.3

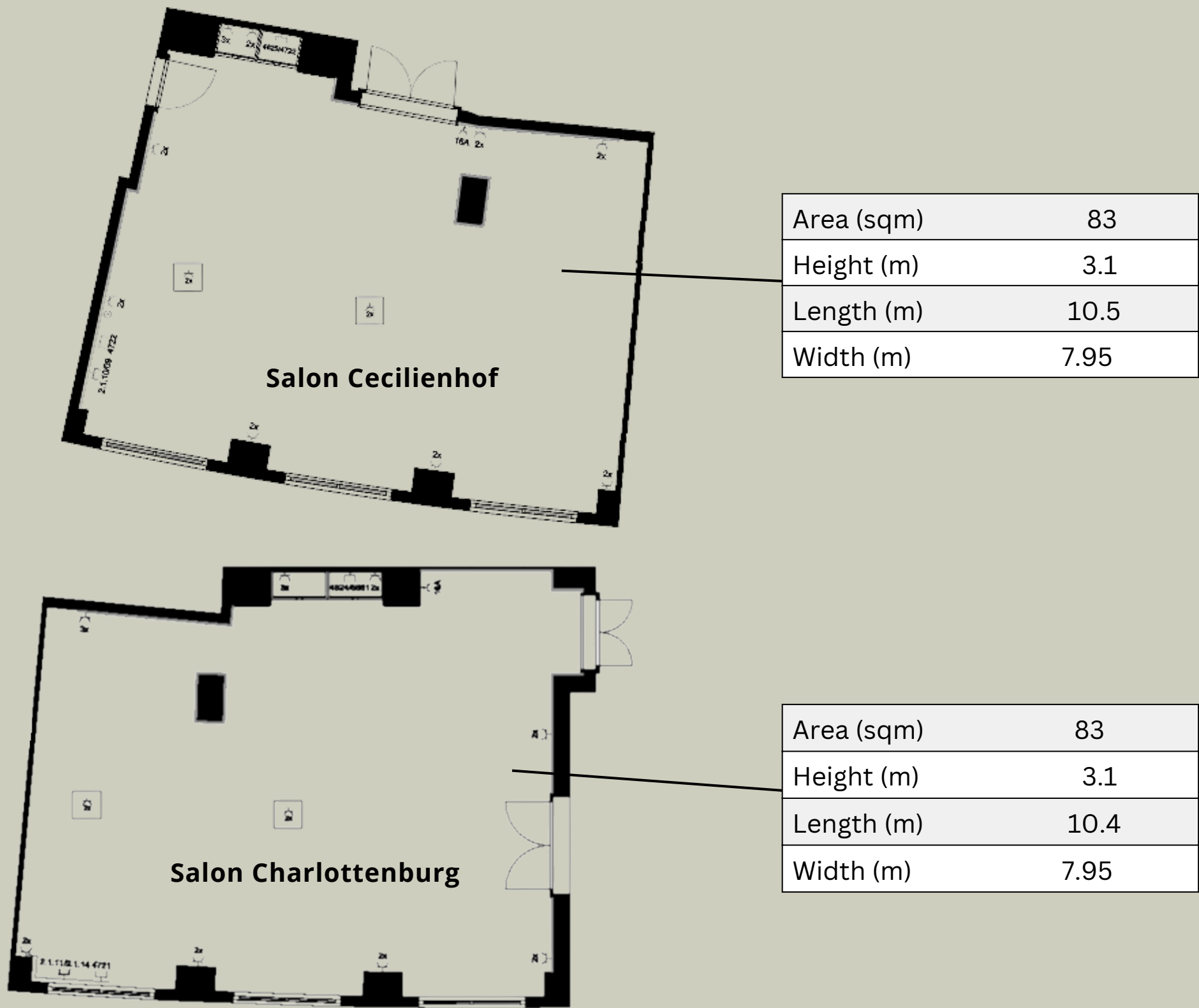


Area (sqm)	40
Height (m)	3.1
Length (m)	7,10
Width (m)	5.4

Schloss-Saal & Foyer



Salon Cecilienhof & Charlottenburg



Renovation Design Presentation





CONFERENCE & EVENTS

MEETING & BANQUETROOMS | **CONFERENCE & EVENTS** | ACCOMODATION | FOOD & DRINKS | WELLNESS | OVERALL INFORMATION

Daily delegate rate

The following services are always included as standard in our conference packages in your main conference room:

- Room rental upon reaching the minimum number of participants
- Digital signage with your logo
- Conference technology including 1 standard projector with screen, 1 flipchart or pinboard, notepads, and pens
- Unlimited conference drinks (Purezza table water, apple, and orange juice)
- Coffee break (max. 30 minutes) with a selection of coffee and tea, as well as 2 delicacies of the kitchen's choice

Below you will find our packages options:

	Basic	Standard	Business	Superior
Welcome coffee with coffee & tea			X	
Snack Lunch with a 2-course menu or buffet of the kitchen's choice, including coffee and tea	X			
Standard Lunch with a 3-course menu or buffet of the kitchen's choice, including coffee and tea		X	X	X
Dinner with a menu or buffet of the kitchen's choice and 2-hour beverage package including house wine, beer, soft drinks, coffee, and tea				X



Extension possibilities

The following options can be added to your daily delegate rate:

Extention	Surcharge
Softdrinks for lunch	+ EUR 3.00 per person/day
Unlimited coffee and tea	+ EUR 6.00 per person/day
Unlimited softdrinks	+ EUR 9.00 per person/day
Croissants to the welcome coffee	+ EUR 2.00 per person/day
Fruit basket to the coffee break	+ EUR 4.00 per person/day
Extra Healthy	+ EUR 14.00 per person/day

Food & Beverages



Choose your desired menu from our various suggestions or create your own menu from individual dishes. The culinary design of your event is entirely up to you.

You can choose between creative dishes with international flair, regional specialties, or thematic presentations.

Upon request, our chef will gladly accommodate any dietary restrictions.

You can complement the menus with the following beverage packages*:

Soft drinks, coffee, and tea
House wine, beer, soft drinks, coffee, and tea
Sparkling wine, house wine, beer, soft drinks, coffee, and tea

*Each package is available for three or four hours.



Discover the charm of our newly renovated rooms, which offer a mix of modernity and elegance.

ACCOMODATION

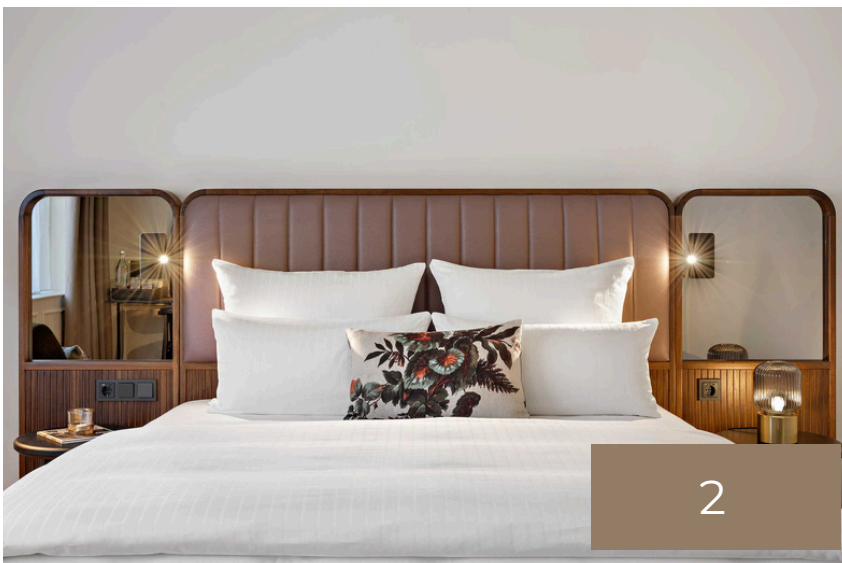
MEETING & BANQUETROOMS | CONFERENCE & EVENTS | **ACCOMODATION** | FOOD & DRINKS | WELLNESS | OVERALL INFORMATION



1

King Cozy

sq. m.	20 - 21
occupancy	1 - 2 persons
equipment	1 king size bed



2

King Deluxe

sq. m.	21 - 24
occupancy	1 - 2 persons
equipment	1 king size bed or 2 twin beds



3

King Premium

sq. m.	25 - 30
occupancy	1 - 2 persons
equipment	1 king size bed



4

King Premium Single Sofa Bed

sq. m.	30
occupancy	1 - 3 persons
equipment	1 king size bed + sofa bed



5

King Grand

sq. m.	30 - 37
occupancy	1 - 2 persons
equipment	1 king size bed or 2 twin beds



6

King Grand Single Sofa Bed

sq. m.	32
occupancy	1 - 3 persons
equipment	1 king size bed + sofa bed



7

King bed Suite

sq. m.	32 - 55
occupancy	1 - 3 persons
equipment	1 king size bed + sofa bed + living area



8

King Bed Suite Accessible

sq. m.	39
occupancy	1 - 3 persons
equipment	1 king size bed + Customized Accessibility + sofa bed



Bedroom Suite

sq. m.	39 - 40
occupancy	1 - 3 persons
equipment	1 king size bed + sofa bed + living area



Courtyard Suite

sq. m.	53
occupancy	1 - 3 persons
equipment	1 king size bed + sofa bed + living area



Family Suite

sq. m.	60
occupancy	1 - 4 persons
equipment	1 king size bed + sofa bed + living area



King Suite Balcony

sq. m.	46
occupancy	1 - 3 persons
equipment	1 king size bed + sofa bed + living area + balcony



Balcony Suite

sq. m.	50 - 55
occupancy	1 - 3 persons
equipment	1 king size bed + sofa bed + living area + balcony



KuDamm Suite

sq. m.	89
occupancy	1 - 4 persons
equipment	1 king size bed + sofa bed + living area



Berlin Suite

sq. m.	75
occupancy	1 - 3 persons
equipment	1 king size bed + sofa bed + living area + kitchen area



Tower Suite

sq. m.	113
occupancy	1 - 4 persons
equipment	1 king size bed + sofa bed + living area + kitchen area



FOOD & DRINKS

MEETING & BANQUETROOMS | CONFERENCE & EVENTS | ACCOMODATION | **FOOD & DRINKS** | WELLNESS | OVERALL INFORMATION

Bristol Pop-Up Lounge & Eatery

Start your day in our Pop-Up Lounge & Eatery before exploring the city center and the Kurfürstendamm.

With a classic atmosphere, it is the ideal place for coffee lovers, business guests or those looking for a meal. Experience the perfect blend of sophistication and comfort that makes every visit uniquely unforgettable.

Enhance your culinary experience at the Hotel Bristol Berlin, where you have the choice between a delicious and light business lunch or dinner.

Our menu emphasizes the freshest seasonal ingredients, all in the stylish and inviting atmosphere of our Pop-Up Lounge & Eatery.

Food & Drinks



Pop-Up Lounge & Eatery

Lunch & Dinner are served daily from 11:30 a.m. to 10:00 p.m., and are also available via room service for your convenience.

The menu includes timeless Italian favorites:

- Pizzas in select variations
- Panna Cotta
- Penne Arrabiata
- Mousse au chocolat



WELLNESS

MEETING & BANQUETROOMS | CONFERENCE & EVENTS | ACCOMODATION | FOOD & DRINKS | **WELLNESS** | OVERALL INFORMATION

THE POOL AREA IS CURRENTLY UNDER CONSTRUCTION.



Dive into the 18m long, 8m wide pool, relax in the 29°C water under a panoramic roof and enjoy personalized detox waters at the pool bar.

Finnish sauna - temperature: approx. 85°C. Special features: wooden paneling, stone oven, free scents for infusions

Steam sauna - temperature: approx. 45°C. Special features: cladding with marble tiles, free scents for infusions



OVERALL INFORMATION

MEETING & BANQUETROOMS | CONFERENCE & EVENTS | ACCOMODATION | FOOD & DRINKS | WELLNESS | **OVERALL INFORMATION**

Contact

Group & Event Department
meetings.bristolberlin@ihg.com

Reservations Department
reservations.bristolberlin@ihg.com

Hotel Bristol Berlin
Kurfürstendamm 27
10719 Berlin