



INTERCONTINENTAL.  
MARK HOPKINS SAN FRANCISCO



MEETINGS & EVENTS

## MARK HOPKINS SAN FRANCISCO

### SOME PEOPLE VISIT SAN FRANCISCO'S ICONS, OTHERS STAY IN THEM

As splendid now as when it opened to great fanfare in 1926, the InterContinental® Mark Hopkins San Francisco is one of the city's finest hotels. Conveniently situated at the crest of illustrious Nob Hill and the intersection of three cable car lines, this venerable landmark commands a reputation for its historic legacy and service excellence. Whatever the event, our team is there for you and understands what it takes to help you create a flawless and memor-able occasion for your guests.



### HOTEL FACILITIES

Historic charm combined with modern technology provides the starting point for a meeting experience unlike any other. Offering 383 rooms including 26 full-sized suites, all rooms face outward, boasting spectacular views of the city or bay. The hotel's six specialty suites are reminiscent of a fine home or estate, with each furnished in a unique style, filled with luxury appointments and original art representing the city's diverse cultural heritage.

The Mark Hopkins is home to the legendary Top of the Mark sky-lounge, famed for its panoramic vistas, extensive cocktail menu, and tantalizing appetizers. Steeped in rich history, the lounge has continued to draw locals and visitors alike since its opening in 1939.

The Nob Hill Club is a multi-use facility that serves as a dining room offering modern American cuisine, an American wine bar, a Club InterContinental® Lounge, and much more. The Nob Hill Club is committed to sourcing as local as possible, and this is reflected in its seasonal menu. A California-centric wine list complements superbly.

Guests also have access to in-room dining, a 24-hour fitness center, and business center.

### GUESTROOMS AND SERVICES

383 guestrooms

26 full-sized suites; 15 junior suites

6 specialty luxury suites

7 suites with sunrooms

Docking Stations with Speakers

High-Speed Wired and Wireless Internet

Concierge Services

Porter/Bellman

Club InterContinental

In-Room Dining

Minibar

Nob Hill Club Restaurant

Top of the Mark Sky Lounge

Business Center

Fitness Center

Valet Parking



## MARK HOPKINS SAN FRANCISCO



### MEETINGS AND EVENTS

The InterContinental Mark Hopkins San Francisco offers over 19,000 square feet of flexible, dynamic meeting and event spaces, of which most of the meeting rooms offer natural lighting. The historic Peacock Court Ballroom and the world-renowned murals in the Room of the Dons set the backdrop for a day of learning, an evening of dining or endless other opportunities.

### A PERSONAL RESPONSIVE SERVICE

InterContinental Meetings are delivered by a highly-trained team focused on understanding your needs and staging an event that is tailored to you. Every element of our service and technology is designed to simplify the event planning process, from fast availability checks and transparent pricing to the latest technology tools such as virtual tours and fully interactive floorplans that can be customized to each event.

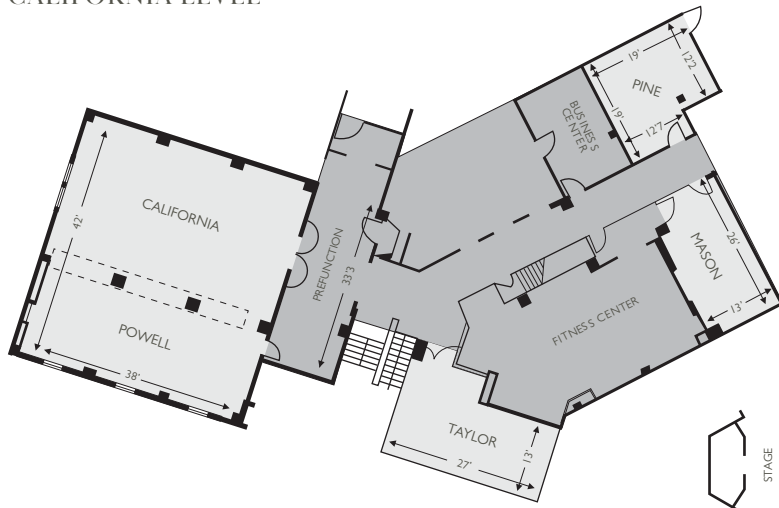
### HYBRID SOLUTIONS

Supports in-person and virtual attendees by delivering responsible and creative meeting and event solutions without compromising on the experience.

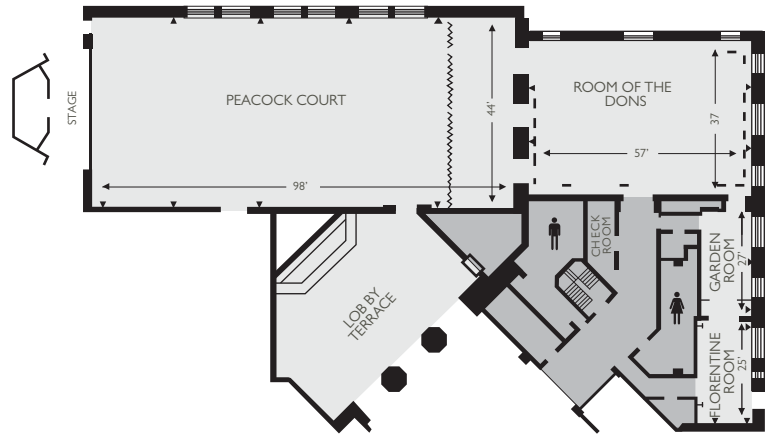
### DIRECT CONTACT:

Encore Sales | [icmhsales@encoreglobal.com](mailto:icmhsales@encoreglobal.com)

CALIFORNIA LEVEL



LOBBY LEVEL



Name of Room	Theater Style	Classroom	Cocktail Reception	Banquet	U-Shape	Conference	Size (sq. ft.)	Length x Width (ft.)	Height (ft.)	Floor
Pine	20	12	20	20	-	12	361	19 x 19	8	C
Mason	-	-	-	-	-	10	338	26 x 13	8	C
Taylor	27	20	20	20	14	12	351	27 x 13	8	C
California	90	40	90	60	24	22	1,040	40 x 26	9	C
Powell	35	18	30	40	-	20	608	38 x 16	9	C
California & Powell	110	62	120	100	-	-	1,596	38 x 42	9	C
Peacock Court	450	192	550	360	64	-	4,312	98 x 44	20	L
Room of the Dons	182	84	250	180	36	-	2,109	57 x 37	20	L
Peacock Court & ROD	-	-	800	600	-	-	5,217	141 x 37	20	L
Florentine	25	16	25	20	-	14	350	25 x 14	11	L
Garden	25	16	25	20	-	14	378	27 x 14	11	L
Florentine & Garden	50	32	50	50	-	28	728	52 x 14	11	L
Lobby Terrace	-	-	-	-	-	-	1,300	52 x 25	18.5	L

## MEZZANINE LEVEL



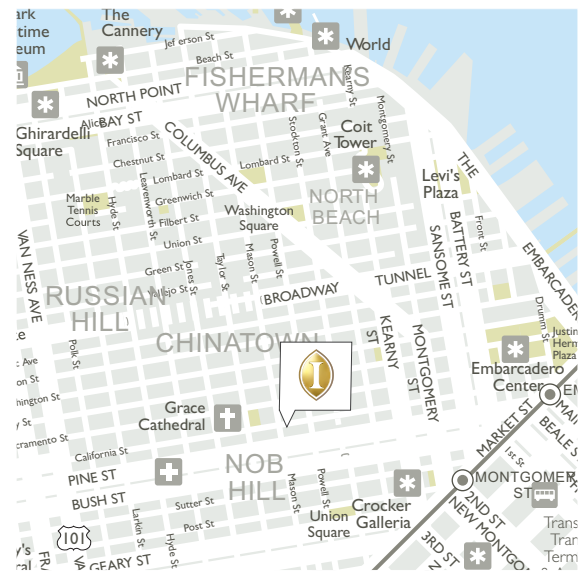
## SECOND LEVEL



Name of Room	Theater Style	Classroom	Cocktail Reception	Banquet	U-Shape	Conference	Size (sq. ft.)	Length x Width (ft.)	Height (ft.)	Floor
--------------	---------------	-----------	--------------------	---------	---------	------------	----------------	----------------------	--------------	-------

Board Room	-	-	-	-	-	14	600	40 x 15	9	M
Harvard	25	12	25	20	-	14	276	23 x 12	9	M
Stanford	36	32	30	30	16	14	486	27 x 18	9	M
Six Continents	90	40	90	60	30	22	1,040	40 x 26	9	M
George D. Smith	55	32	50	40	-	26	795	53 x 15	9	M
Six Continents & GDS	120	62	140	100	-	-	1,640	40 x 41	9	M

Barclay I	25	20	30	20	16	14	416	26 x 16	9	2
Barclay II	25	20	30	20	16	14	416	26 x 16	9	2
Barclay I & II	50	40	60	50	-	30	832	52 x 16	9	2
Willard I	25	20	30	20	16	18	375	25 x 15	9	2
Willard II	25	20	30	20	16	18	405	27 x 15	9	2
Willard I & II	50	40	60	50	-	30	780	52 x 15	9	2



InterContinental® Mark Hopkins® San Francisco  
One Nob Hill, 999 California Street  
San Francisco, CA 94108

SFOHA.SALES@ihg.com

T: +1 (415) 616-6959

sfmarkhopkins.com