

H *Holiday Inn*[®]
AN IHG[®] HOTEL
MUMBAI
INTERNATIONAL AIRPORT

Conferences and Events



H Holiday Inn
AN IHG® HOTEL
MUMBAI
INTERNATIONAL AIRPORT

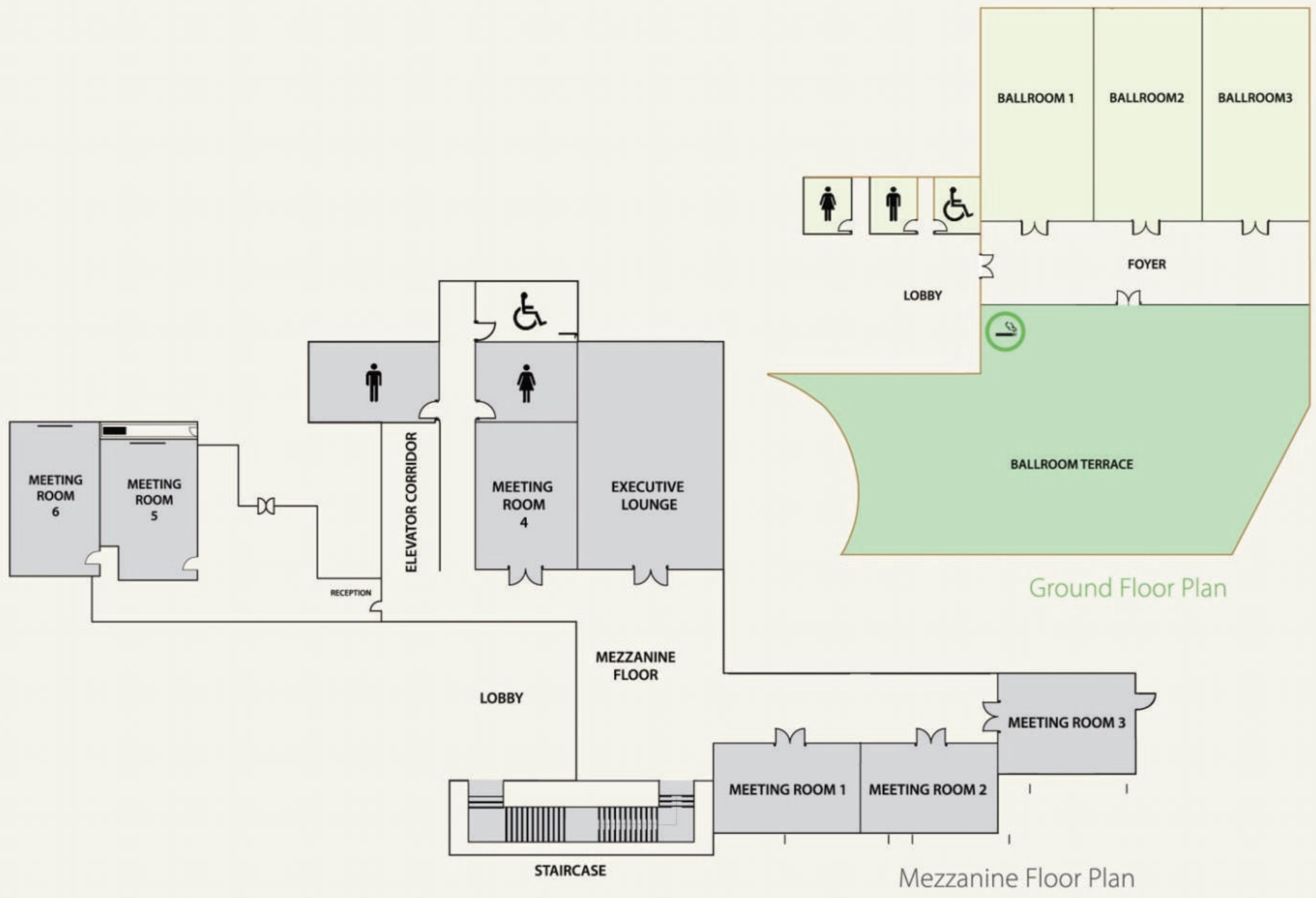
Conferences and Events



Conferences and Events



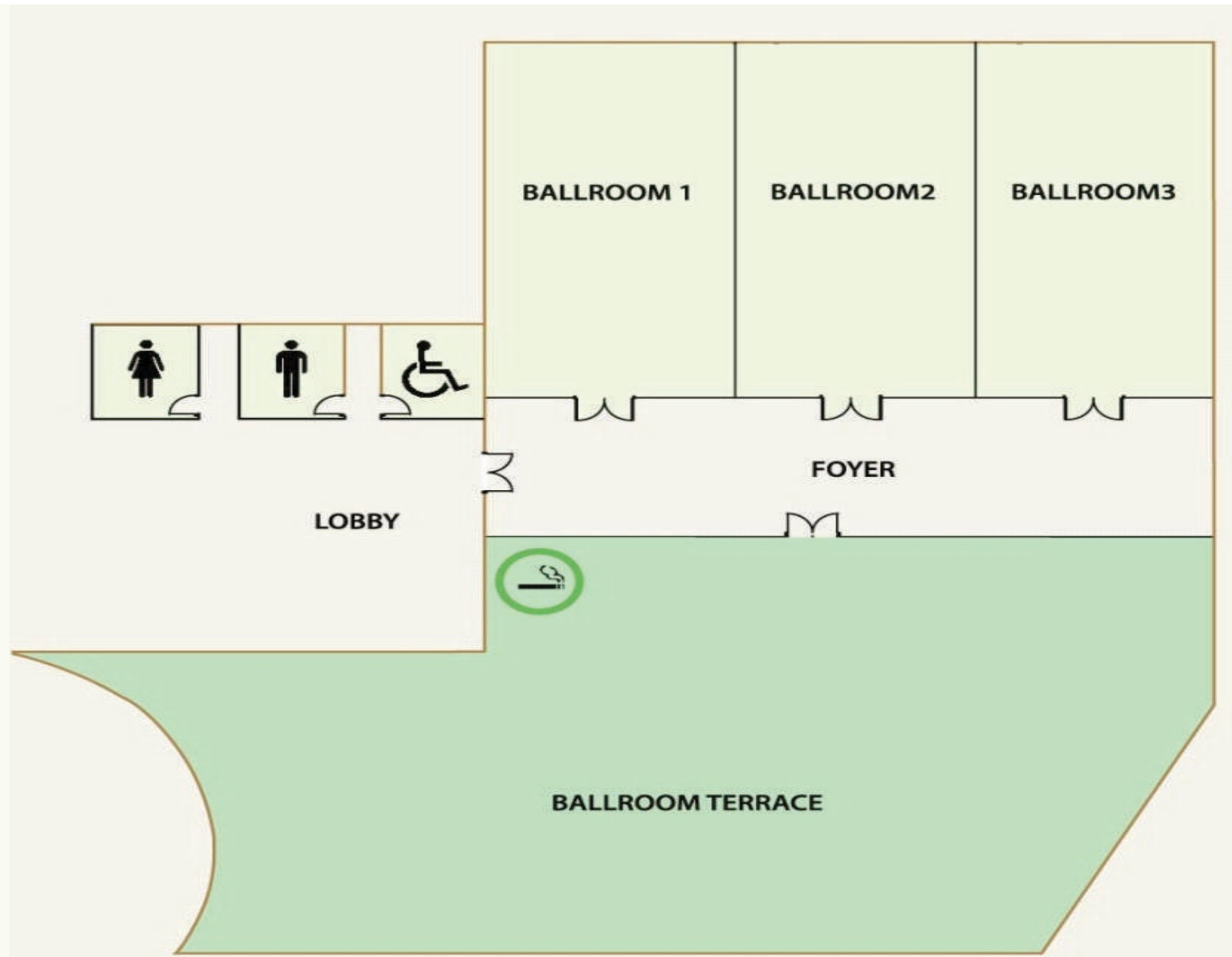
Banquet Floor Plan



Banquet Capacity Chart

Venue	Length*Width*Height	Area Sq Feet	Cluster	Theatre	U Shape	Classroom	Social (Floating Crowd)
Ballroom 1	48*26*22	1333	50	100	40	50	120
Ballroom 2	48*26*22	1333	50	100	40	50	120
Ballroom 3	48*26*22	1333	50	100	40	50	120
Grand Ballroom	79*48*22	3696	150	300	120	150	360
Ballroom Prefunction	79*18	1422	-	-	-	-	100
Ballroom Terrace	75* 30	2250	-	-	-	-	140
Meeting Room 1	26*16*9	416	15	24	15	15	30
Meeting Room 2	25*16*9	400	15	24	15	15	30
Meeting Room 3	30*27*9	810	30	50	23	30	60
Meeting Room 5	40*25*10.5	950	42	55	35	35	
Meeting Room 6	40*25*10.5	900	36	55	28	30	
Sky Terrace	69*51	3550	150	250	-	-	250

Grand Ballroom



Ground Floor Plan

WIDTH – 48 sq. ft.
LENGTH – 79 sq. ft.
HEIGHT – 22 ft.

Ballroom Part 1



A floor plan diagram of a ballroom. The room is a large rectangle with a light green background. The text 'Ballroom Part 1' is centered within the rectangle. At the bottom edge of the rectangle, there are three small grey rectangular shapes representing pillars or columns. The text 'Ballroom Part 1' is centered within the rectangle.

Ballroom Part 1

WIDTH – 26 sq. ft.
LENGTH – 48 sq. ft.
HEIGHT – 22 ft.

Ballroom Part 2



A floor plan diagram of Ballroom Part 2. The room is a large rectangle with a light green background. At the bottom center, there are three small grey rectangular shapes representing a stage or podium area. The text 'Ballroom Part 2' is centered within the room area.

Ballroom Part 2

WIDTH – 26 sq. ft.
LENGTH – 48 sq. ft.
HEIGHT – 22 ft.

Ballroom Part 3

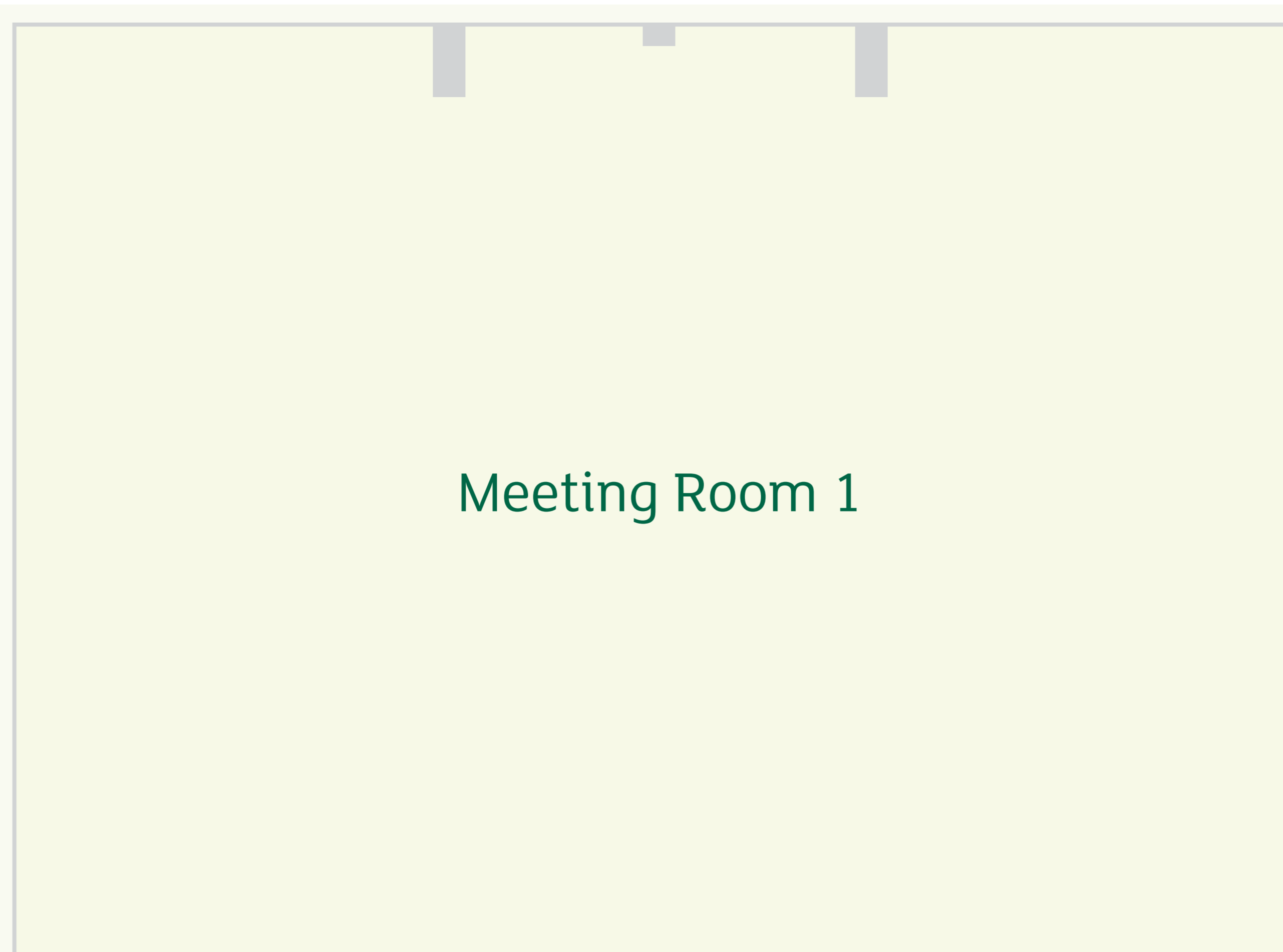


A floor plan diagram of Ballroom Part 3. The room is a large rectangle with a light green background. The text 'Ballroom Part 3' is centered in the room. At the bottom edge, there are three small grey rectangular shapes representing pillars or columns.

Ballroom Part 3

WIDTH – 26 sq. ft.
LENGTH – 48 sq. ft.
HEIGHT – 22 ft.

Meeting Room 1



Meeting Room 1

WIDTH – 26 sq. ft.
LENGTH – 16 sq. ft.
HEIGHT – 9 ft.

Meeting Room 2

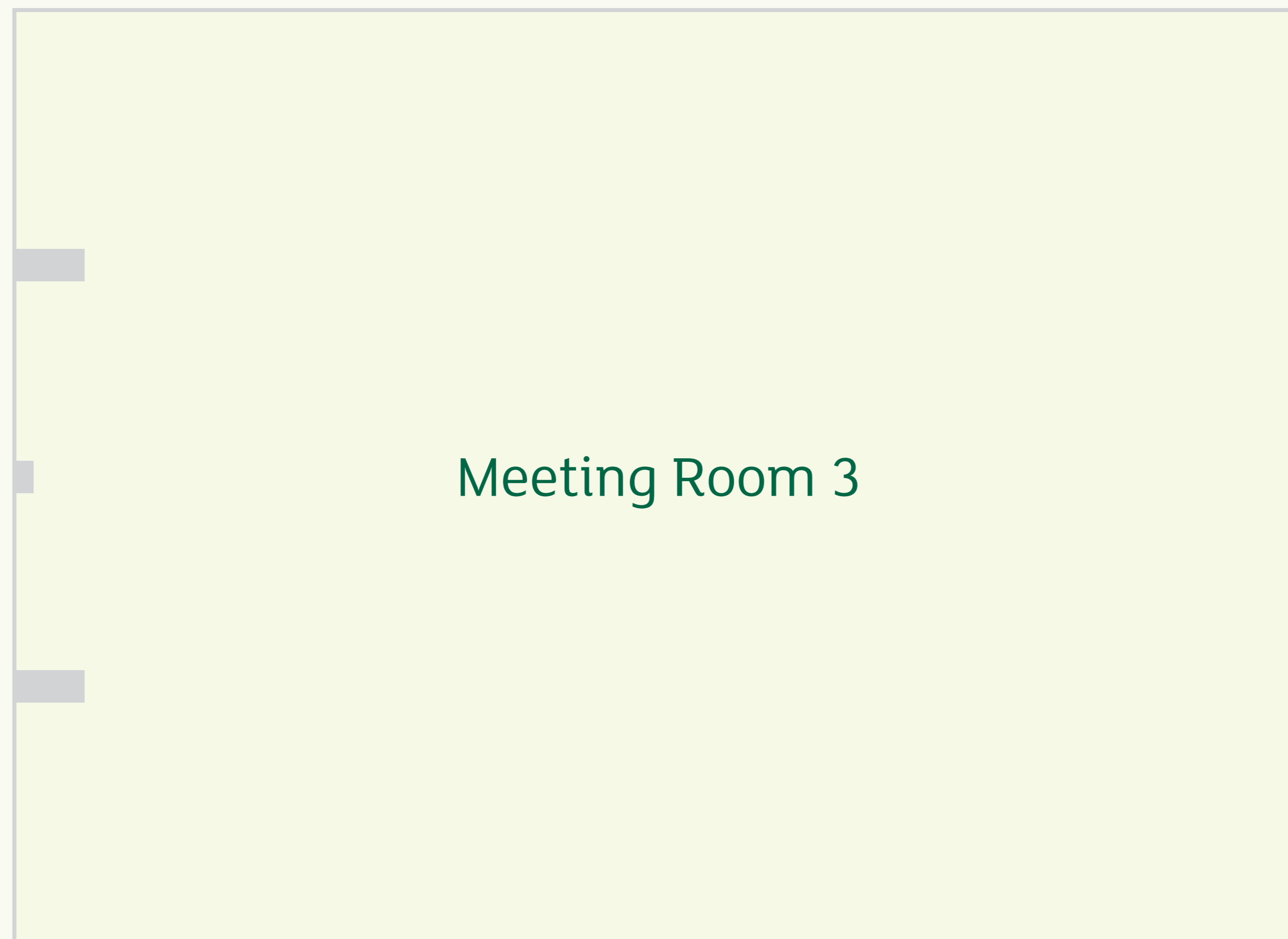


Meeting Room 2

The diagram shows a rectangular meeting room with a light green background. Three small grey rectangular shapes are positioned along the top edge, representing ceiling fixtures or lights. The text 'Meeting Room 2' is centered within the room's boundary.

WIDTH – 25 sq. ft.
LENGTH – 16 sq. ft.
HEIGHT – 9 ft.

Meeting Room 3



WIDTH – 30 sq. ft.
LENGTH – 27 sq. ft.
HEIGHT – 9 ft.

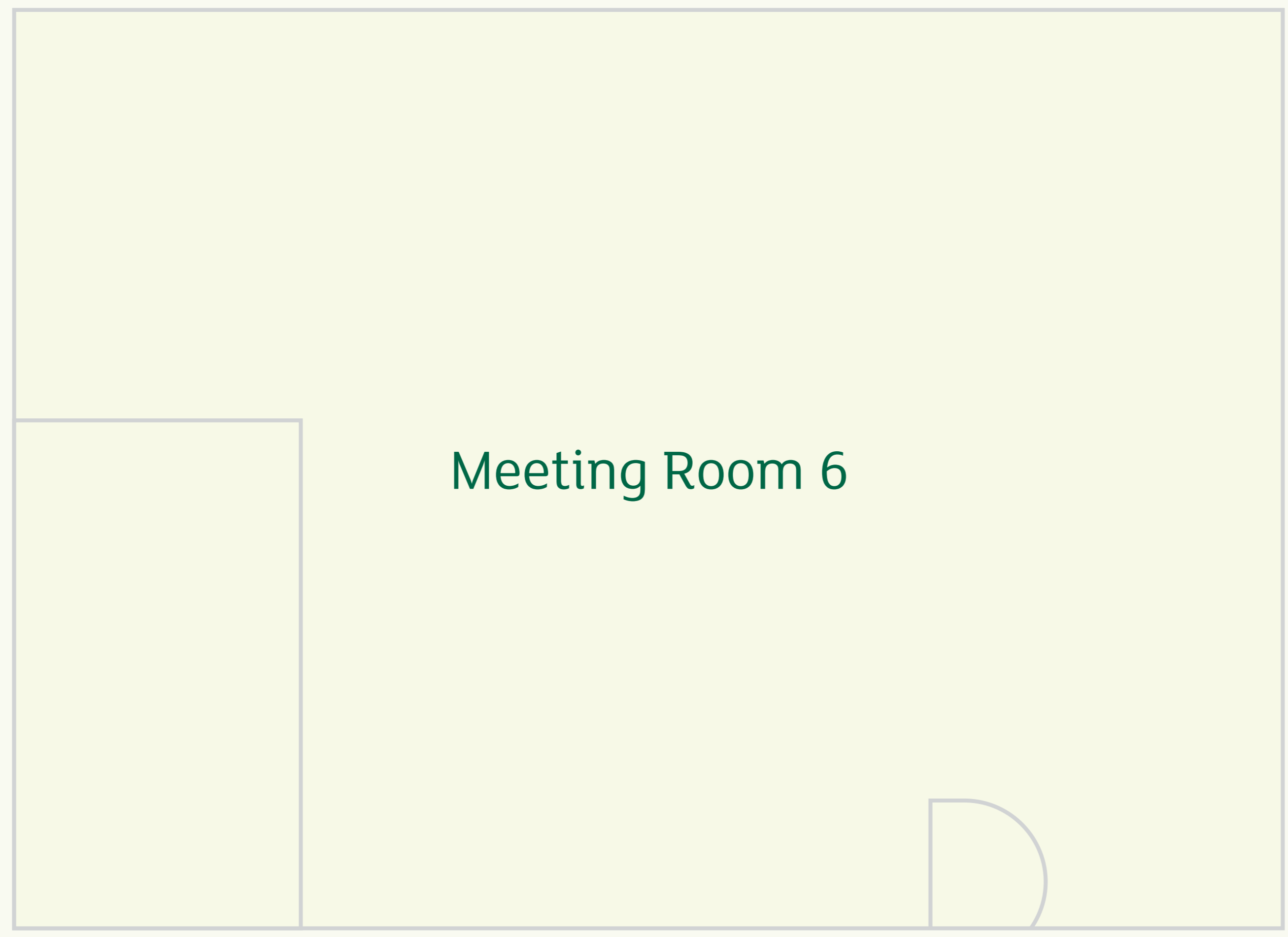
Meeting Room 5

Meeting Room 5



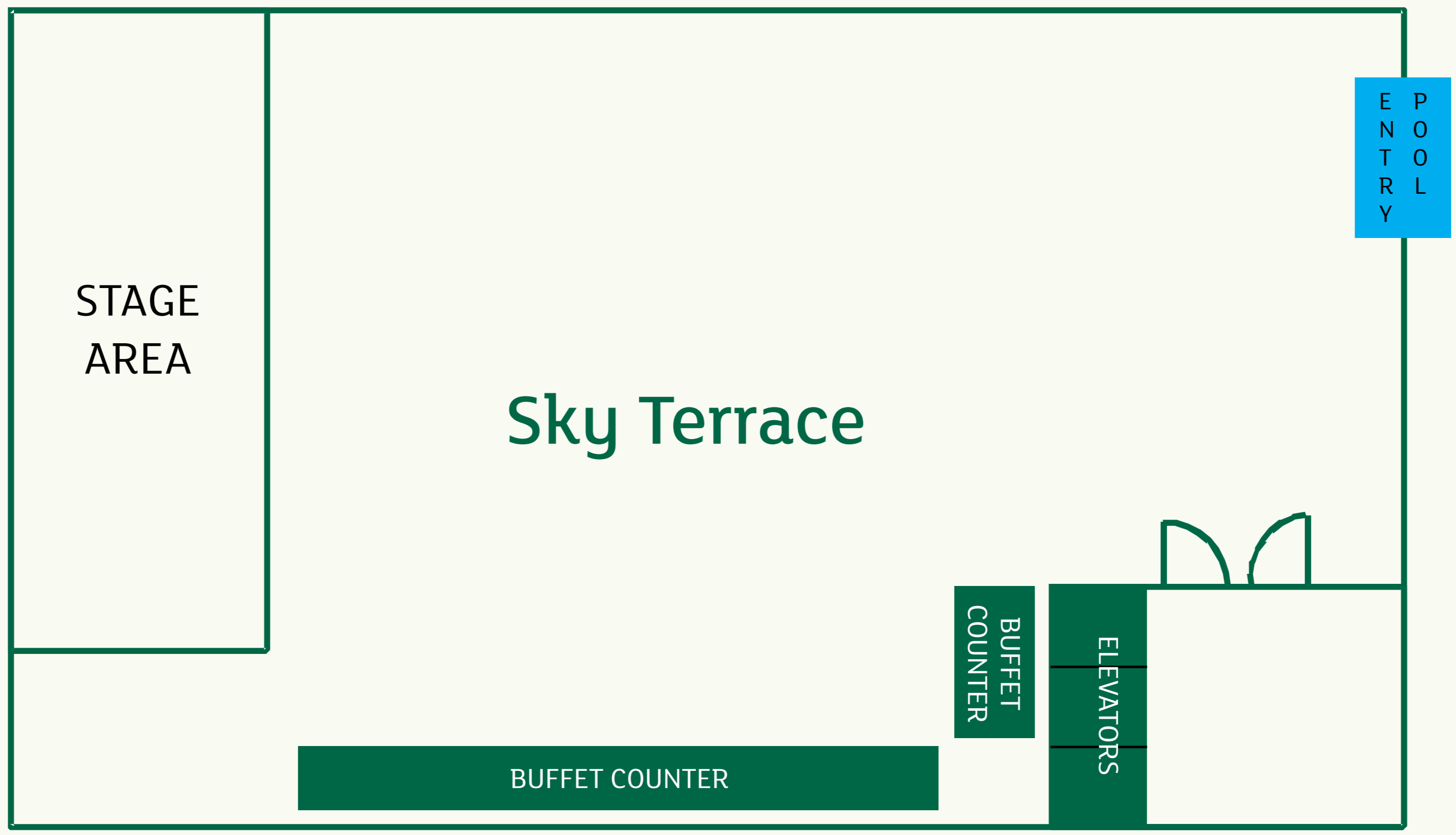
WIDTH – 25 sq. ft.
LENGTH – 40 sq. ft.
HEIGHT – 8.05 ft.

Meeting Room 6



WIDTH – 25 sq. ft.
LENGTH – 40 sq. ft.
HEIGHT – 8.05 ft.

Sky Terrace



WIDTH – 51 sq. ft.
LENGTH – 69 sq. ft.



Holiday Inn Mumbai International Airport

Sakinaka Junction, Andheri Kurla Road,
Andheri East, Mumbai 400 072, India

T +91 22 4085 1800 | F +91 22 4085 1828