



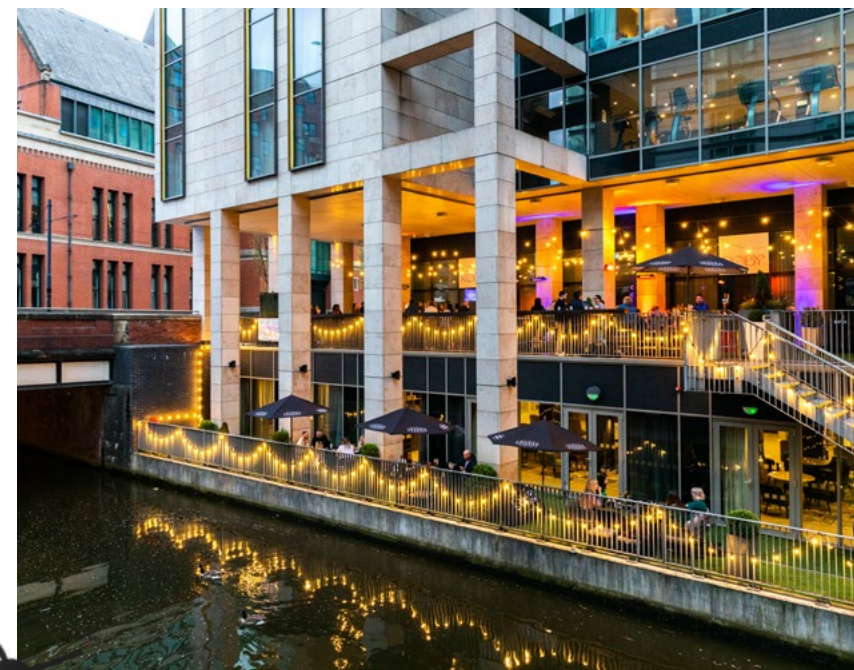
## 4\* Holiday Inn Manchester City Centre

## 4\* Holiday Inn Manchester City Centre

Conveniently located in the heart of the city, opposite Piccadilly Train Station. Holiday Inn Manchester City Centre boasts 298 modern and well-equipped bedrooms each designed with guest comfort in mind.

With an unrivalled meetings and events offering, whether it be a small board meeting, conference for 140 delegates or a Summer BBQ for 300, we have a range of flexible and spacious rooms each featuring the latest cutting-edge technology. All rooms lead out to a large breakout area with direct access to the impressive terrace overlooking the canal.

At Holiday Inn Manchester City Centre, we understand that there is no such thing as a standard event. That is why our experienced team will be on hand to help with ideas and organisation to deliver an event that is bespoke and meets your goals.



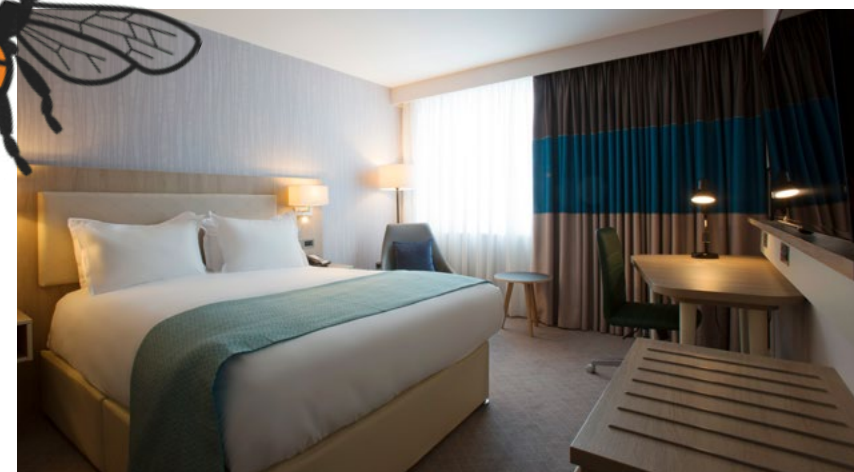
[Click to view hotel 3D tour](#)



### Hotel Facilities:

298 contemporary bedrooms  
12 cutting edge meeting rooms  
Roby1844  
Canal Side Terrace  
Open lobby all day dining

Private dining  
Free high speed Wi-Fi  
Fitness centre  
Local Heart & Graft Coffee  
Discounted parking available nearby





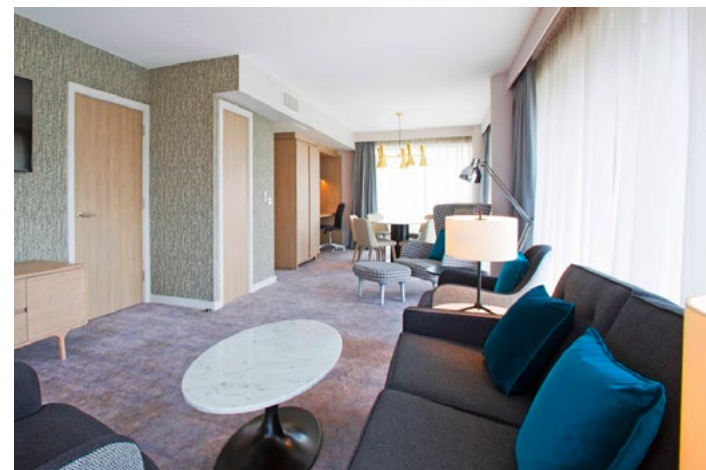
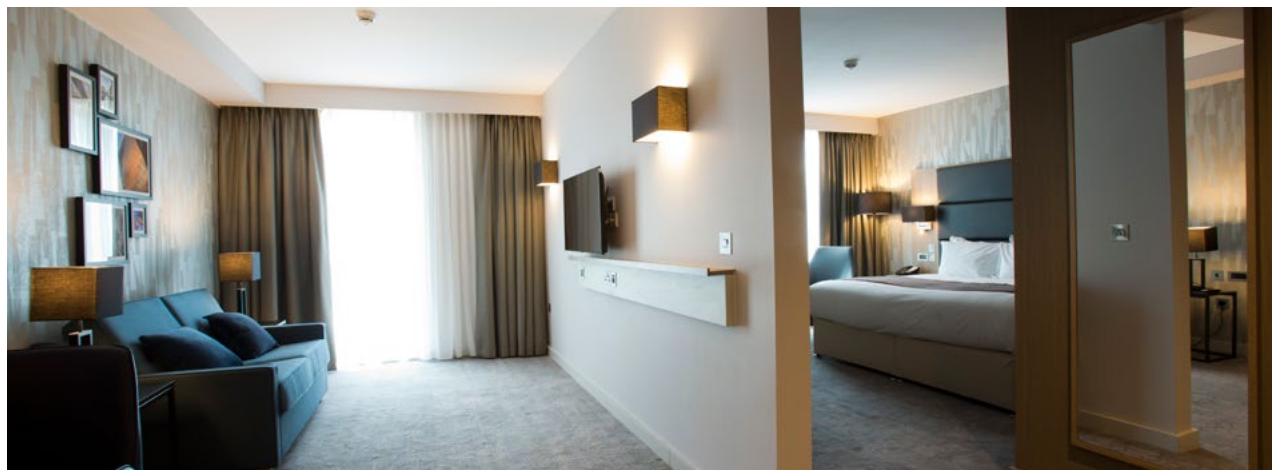
## Bedrooms

Our 298 bedrooms all include complimentary high speed WiFi, 40-inch LCD Smart TV, air conditioning, desk and bedside USB charge points, blackout curtains, triple glazed windows and a laptop safe.

Choose from a range of well-designed room and suite options including Standard Double, King Executive, Junior Suites and Feature Suites.

For larger groups, take advantage of up to 105 twin rooms, dedicated group check in if required and a coach lay by directly in front of the hotel.

Complimentary bedroom upgrade offered to the group or event organiser when available.





## Roby1844

Named after the original Victorian Roby School building next door, Roby1844 Canalside Terrace Bar & Eatery is perfect to host any social event all year round from Summer parties and BBQs, to drinks from our mini Christmas market huts.

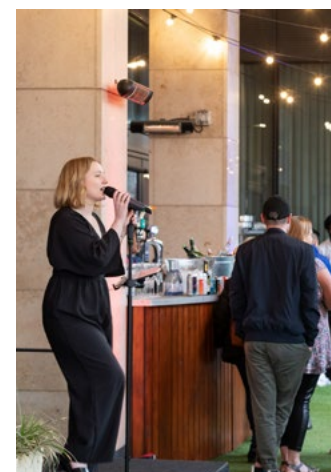
Partially covered and with heaters available, you can guarantee the success of your event despite the Manchester weather!

With a private bar offering a full drinks selection including draught and a range of different catering options, Roby1844 is the ideal space for your event.

**Maximum Capacity - 110**

**Option to add on private hire of the exclusive event space & lower canal-side terrace**

**Total maximum capacity -300**





## Eat Fresh

We've thought about how the food that you eat can help support concentration, work performance and energy levels for a more productive meeting. Our menu is designed to keep delegates alert and nourished during the day.

We understand the importance that food plays to the success of your event or group stay. Whether it be our extensive breakfast buffet, a freshly prepared working or restaurant conference lunch, informal BBQ or black tie banquet, our experienced chefs use high quality; and where possible, locally sourced ingredients to ensure every meal is delicious.

Vegetarian, Vegan & Halal options are available within each buffet and menu offering. Our chefs will work with you to provide alternative dishes to cover any other dietary requirements including Coeliac, dairy free and other food allergies.

### **We're proud to serve Heart & Graft coffee**

Available in our Open Lobby and conference breakout space, Heart and Graft have been roasting exceptional and sustainably sourced coffee since 2014. Based in an old Manchester silk mill, they keep the good people of Manchester buzzing with sweet coffee goodness.









## Experience our revolutionary Meetings & Events Environment

With our cutting edge meetings and events space at Holiday Inn Manchester City Centre, offering a high-tech, flexible and innovative environment.

Holiday Inn Manchester City Centre combines a stimulating conference & events space with an open breakout area offering direct access to the Canal side terrace. Keeping the Manchester vibe alive, each of the rooms have a signature design, paying tribute to some of Manchester's famously celebrated musicians and the legendary nightclub, the



 Wireless presentation equipment	 Instant connection to a high quality sound system	 Minimum of 65" HD TV screen built in HDMI & VGA compatible
 Up to 1GB download speed	 One button to start full HD wireless presentation	 4K Ultra HD Video, 105° field of view, 12x optical zoom & HD Audio* <small>*Additional cost applies</small>
Integrated user friendly touch panels	Air conditioning & controllable lighting	In room service on demand button



## Flexible Conference Packages

Our delegate packages help maximise your efficiency by providing all the extras needed for an impressive business event. From state of the art equipment and the latest technology, to nutritious meeting menus that help fuel your delegates, we are the ideal venue for your next meeting, without the hidden costs. Our 24 hour rate is the perfect choice for residential conferences and events. The package is designed to take care of every detail, from meetings and accommodation to a delicious evening meal. We'll also provide a balanced breakfast that'll ensure your delegates are properly fuelled for the day ahead.

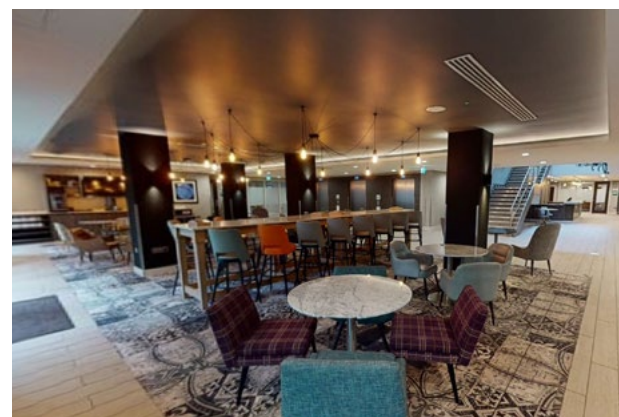
### Day Delegate Package includes:

- Full day room hire
- Unlimited tea and coffee
- Grazing station with healthy and treat options
- Wi-Fi with 1GB download speed
- Hot and cold buffet lunch choices
- Still and sparkling water
- Wireless Barco ClickShare / BenQ presentation equipment
- Bose sound system
- Smart HD TV screen, BenQ, flipchart
- Stationary setting
- In room service on demand button

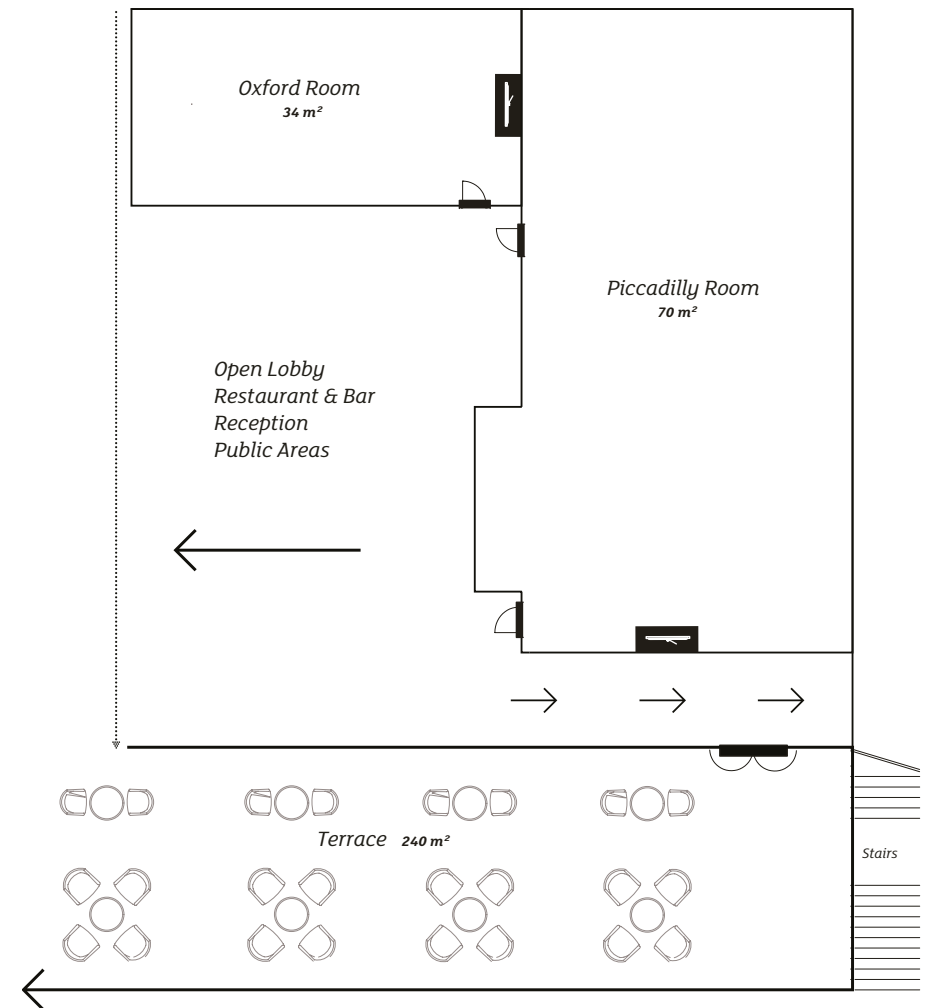
### 24 Hour Package includes:

Includes Day Delegate Package plus:

- Three-course dinner options
- Overnight accommodation
- Full English breakfast
- Access to fitness suite

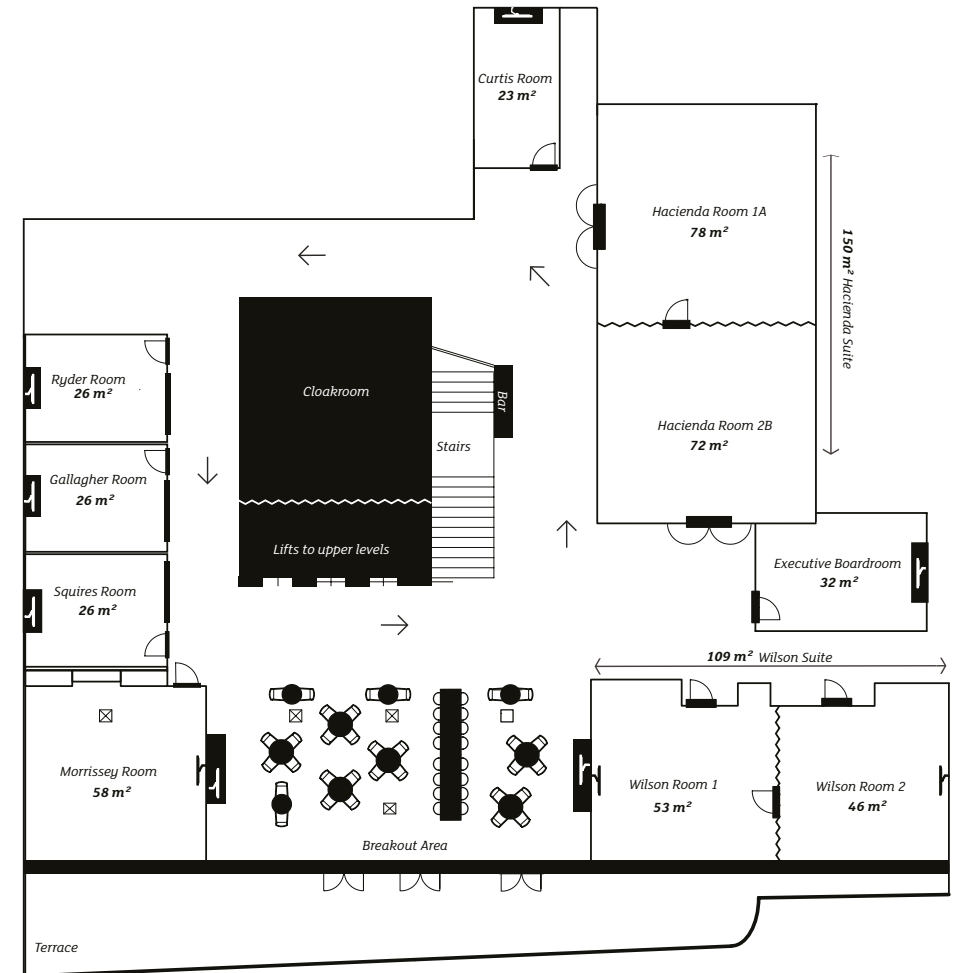


## Upper Level Floor Plan











## Lower Level Floor Plan



# Capacities Chart

Our meetings & events rooms can be arranged in flexible configurations to accommodate any event

										
	Theatre	U-shape	Boardroom	Classroom	Banquet	Cabaret	Length (m)	Width (m)	Area m <sup>2</sup>	Height
Meeting Room 1A - The Hacienda	65	24	24	24	60	48	9 m	9 m	78 m <sup>2</sup>	2.5 m
Meeting Room 2B - The Hacienda	65	24	24*	24	50	48	8.23 m	8.84 m	72 m <sup>2</sup>	2.5 m
The Hacienda Suite	140	44	40	60*	120	96	17 m	9 m	150 m <sup>2</sup>	2.5 m
Meeting Room 1A - The Wilson Room	40	18	18	18	40	32	7.5 m	7.5 m	55 m <sup>2</sup>	2.5 m
Meeting Room 1B - The Wilson Room	40	18	18	18	40	32	7.5 m	7 m	55 m <sup>2</sup>	2.5 m
The Wilson Suite	80	36	36	36	80	56	14.5 m	7.5 m	111 m <sup>2</sup>	2.5 m
Morrissey Room	55	22	22	12*	40	32	8 m	7.5 m	62 m <sup>2</sup>	2.5 m
Squires Room	24	14	12	9	n/a	n/a	5.5 m	4 m	26 m <sup>2</sup>	2.5 m
Gallagher Room	24	14	12	9	n/a	n/a	5.5 m	4 m	26 m <sup>2</sup>	2.5 m
Ryder Room	24	14	12	9	n/a	n/a	5.5 m	4 m	26 m <sup>2</sup>	2.5 m
Curtis Room	20	10	10	4	n/a	n/a	6.5 m	3.5 m	23 m <sup>2</sup>	2.5 m
Executive Boardroom	n/a	n/a	14	n/a	n/a	n/a	8 m	4 m	32 m <sup>2</sup>	2.5 m
Piccadilly Room	60	30	30	24	60	40	11.5m	6m	70 m <sup>2</sup>	3.8m
Oxford Room	30	18	18	12	20	16	7.4m	4.6m	34 m <sup>2</sup>	3.8m

\*Increased capacities available with reduced spacing.



## Celebrate an occasion with us

Our event spaces embrace the spirit of the Manchester music scene with all our rooms named after Manchester's famously celebrated musicians and the legendary nightspot The Hacienda. With modern artwork and quirky lighting, we have a range of flexible and contemporary indoor and outdoor event spaces to host your event.

Specialising in tailor made events accommodating every type of occasion, our team is dedicated to making your event a success. Including drinks packages, bespoke menus and introducing you to our trusted event partners, no detail is overlooked. Utilise our in-house LED Dancefloor, BOSE Surround Sound, Uplighters and private event bar. [Request our special events brochure to find out more.](#)

[Click to view events 3D tour](#)



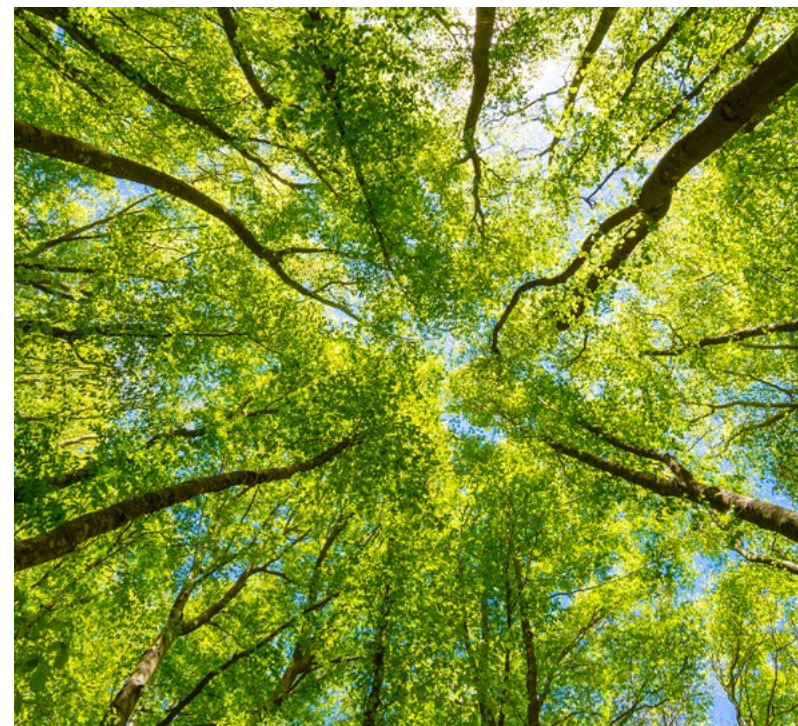


## Sustainability

We know that sustainability is as important to you as it is to us – and that's why we've made it easy for you to stay at a hotel that shares your values. Here at Holiday Inn Manchester City Centre, we are fully compliant with [IHG's Green Engage](#) system, an innovative online environmental sustainability system that gives us the means to measure and manage our impact on the environment.

Some actions we have taken to improve our Carbon Footprint so far include:

- Light sensors in all public bathrooms, corridors & back of house areas.
- Use of CHP (Combined Heat & Power) unit which supports lower Co2 and So2 emissions.
- Partner with [toogoodtogo](#) to reduce food waste.
- Reduced replacement linen incentive for long stay guests / Plant a tree with – [Hotels For Trees](#) - [Where hotel guests plant trees](#)
- Partnered with [Dripdrop](#) and their 'Rent One Umbrella Plant One Tree' scheme together with [Eden Reforestation Projects](#)
- Flowsaver Water management system installed to reduce water consumption.
- Full back of house waste recycling programme in situ.
- Bulk amenities used in all bedroom and public bathrooms
- The hotel has its own Wildflower Rooftop Garden which provides multiple benefits to both the hotel and the environment, including:
  - Converts CO2 emissions.
  - Produces oxygen.
  - Reduces the heat of the building and energy costs.
  - Creates a habitat for wildlife.
  - Reduces ambient temperature.
  - Captures and harvests rainwater.
  - Reduces storm water runoff and discharge.





## Earn with IHG Business Rewards

When you make bookings on behalf of others, for business or for pleasure, we're here to reward you. With IHG® Business Rewards, you can earn points every time you book accommodation, meetings or events at nearly 6,000 participating IHG® Hotels & Resorts worldwide. Here's how it works:

- Join IHG Business Rewards and earn 3 points per \$1 USD.
- Book corporate meetings and events for your group.
- Take advantage of our promotions that can help you earn rewards faster.

## The benefits of IHG Business Rewards

### Earn points

3 points for every \$1 USD spent on accommodations, meetings and/or events.

### Loyalty benefits

Earn Elite status and redeem points for stays, merchandise from the IHG One Rewards catalogue, and more.

### Hotel choices

Nearly 6,000 participating hotels worldwide.

### Manage just one account

One membership number manages your IHG Business Rewards and IHG One Rewards activity.

[Register for IHG Business rewards today!](#)

IHG® BUSINESS  
REWARDS

## Increase your earning power

Booking for others just got more rewarding.



## Contact us

### Located in the heart of Manchester City Centre

Holiday Inn Manchester City Centre, 25 Aytoun Street, Manchester, M1 3AE

Contact our sales office: +44 (0) 161 242 5444

Meetings & Events – [micesales@himanchestercity.com](mailto:micesales@himanchestercity.com)

Groups – [groups@himanchestercity.com](mailto:groups@himanchestercity.com)

[www.himanchestercity.com](http://www.himanchestercity.com)



### Sat Nav:

If you are travelling to us by car, please use postcode **M1 3DT**

Discounted offsite parking is available

### Transport Links

By bus - Piccadilly Gardens bus station 50 m

By tram - Piccadilly Gardens Metrolink tram stop 50 m

By train - Manchester Piccadilly railway station 0.1 miles (0.1km)

By air - Manchester Airport – 9 miles (14.5 k)

