



“

The best place to
work study and host
events in
East London

Contact Us For
More Info



+44 0207 791 9010



5 Cavell St London E12BP



Lonuk.meetings@hiwhitechapel.com

Virtual 360 Tour:

<https://my.matterport.com/show/?m=q1XursoQUoy>

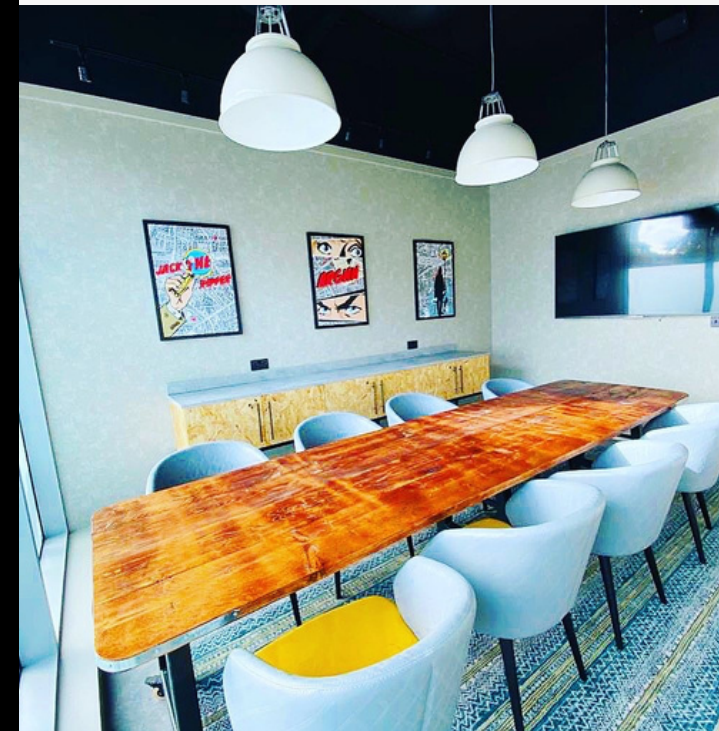
Website:

<https://whitechapelthinkfactory.com/>

ABOUT US

Our Whitechapel Think Factory built in 2020 with all natural daylight is the perfect location for your meeting event or hot desking needs

From VIP boardrooms of 8 guests to conferences up to 70 theatre or 40 banquet we are the perfect venue!





OUR FEATURES

Full catering and bespoke menus available with options such as halal, vegan or vegetarian options

All your AV equipment needs available including projector, LCD TV or screen, flip chart, wifi, virtual conferencing and microphone hire

The perfect location with a overground, docklands light rail, underground and Elizabeth line within 5 - 10 mins walking!



	Room Layouts								Projector and screen	PA System	Dimensions			
	Cabaret	Boardroom	Theatre	U-Shape	Classroom	Hollow Square	Reception	Banquet			Length	Width	Height	m ²
Meeting Rooms														
Green Room	-	12	-	-	-	-	-	-	LCD screen	Yes	6.6m/5.5m	5.8/1.1m	2.8m	19.2m ²
WTF 1	18	15	25	12	12 (Trestle) 25 (Exam Table)	25	30	24	Yes	Yes	7.4m	4.8m	3.6m	40 m ²
WTF 2	18	15	25	12	12 (Trestle) 25 (Exam Table)	25	30	24	Yes	Yes	7.5m	4.8m	3.6m	39 m ²
WTF 3	-	10	-	-	-	-	-	-	LCD screen	Yes	4.5m	3.3m	3.6m	17 m ²
Prefunction Area									NA	NA	10.4m	5.0m	3.6m	34 m ²
White Office		2							NA	NA				18 m ²
Combined Rooms														
WTF	35	25	70	25	30 (Trestle) 50 (Exam)	50	80	40	Yes	Yes	15.0m	4.8m	3.6m	79 m ²
Bed Syndicate		12	16		4	-	-	-	LCD screen	No	6.2m	3.5m	2.5m	21.7m ²
5 Cavell St Kitchen and Bar	-	-	-	-	-	-	-	140	LCD screen	No	16.0m	5m	2.8	540m ²