

# CAPACITY CHART

Holiday Inn & Suites  
Fairfield by Marriott

ROOM	SQ. FOOTAGE	CLASSROOM	THEATER	U-SHAPE	ROUNDS
Centennial Room	3900	230	350	NA	250
Salon A	840	45	55	25	40
Salon B	900	45	55	25	50
Salons A & B	1740	100	190	48	100
Salon C	740	40	50	25	40
Salon D	700	40	50	25	40
Salons C & D	1440	80	150	48	80
Salons C / D / Hallway	2100	130	220	69	120
Montgomery Room	1250	70	120	40/45	80
Capitol Room	900	40/30	50	25	50
Reception Hall	1073	NA	NA	NA	NA
Kanawha Boardroom	702	32	48	20	32
Brooke & Preston Boardrooms	624	25	40	15	24
Clay & Morgan Boardrooms	624	12 Conference Style Seating with Table			
Tyler & Monroe Boardrooms	550	15	20	10/12	16
Fairfield Meeting	625	25	40	25	32
Fairfield Boardroom	375	12 Conference Style Seating with Table and Chairs			

## Seating Arrangements



Crescent



U-Shape



Banquet



Boardroom



Hollow Square



Theatre



Classroom

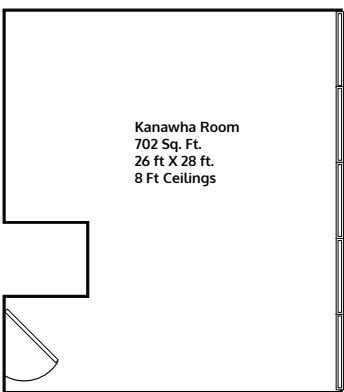
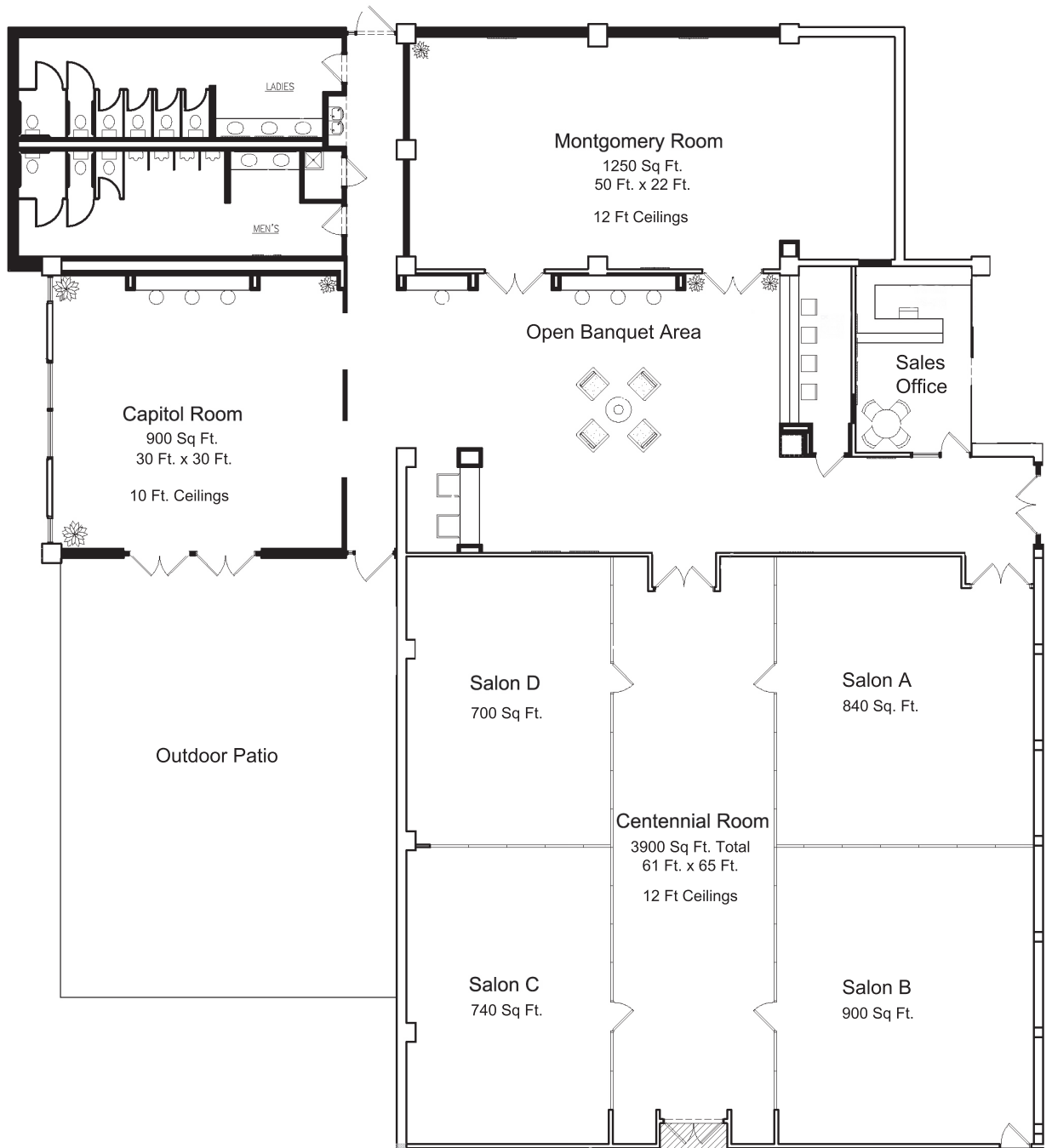


U-Shape

See reverse side for room layouts



Charleston  
Conference  
Center



**Charleston  
Conference  
Center**

