

# MEETING EVERY EXPECTATION



## MORE OF WHAT YOU NEED

No matter what kind of function, conference, or event you're planning, our light-filled meeting and event spaces will suit your needs. We'll take care of all the details, from setting up the room to suggesting food and drinks.

Each meeting and event space has been purposefully designed to provide plenty of natural light so your delegates can remain focused and motivated. With free, fast Wi-Fi and the latest technology, they won't miss a beat.

Located right in the heart of Melbourne, our 5 versatile spaces offer plenty of options to make your next event a success.

Book with us and join the **IHG® Rewards** | [holidayinexpress.com/littlecollins](https://holidayinexpress.com/littlecollins) | +61 (0)2 4064 8863






AN IHG® HOTEL  
MELBOURNE  
LITTLE COLLINS

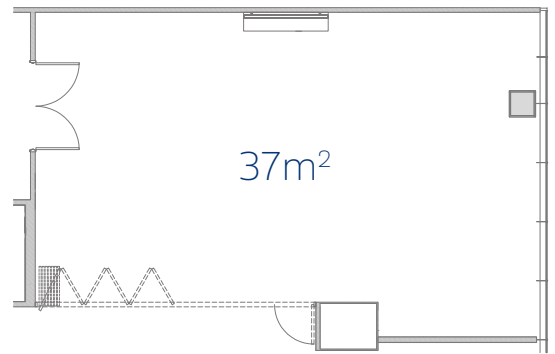
# MEET YOU THERE

## EXCHANGE ROOM

A spacious and modern atmosphere is offered in our Exchange Room, which is located on level 2. With floor-to-ceiling windows, you will have lots of natural light and views of the city. The space is suitable for conferences and banquets for up to 40 people.

### CAPACITY AT A GLANCE


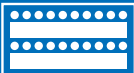

		
Boardroom	Classroom	U-Shape
22	30	24

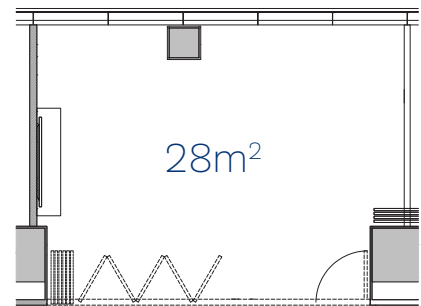


## ST AUGUSTINE ROOM

With plenty of natural light and incredible views, St Augustine Room is our most intimate space. The room encourages guest interaction and comes in a variety of configurations, including cocktail and a theatre style.

### CAPACITY AT A GLANCE




		
Boardroom	Classroom	U-Shape
10	10	11

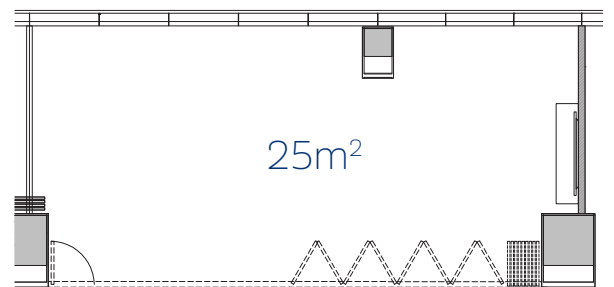


## TRAMWAY ROOM

Tramway Room is a modern meeting space with views of the city and lots of natural light. The space can be customized to suit your event. This space has the latest technology including complimentary in-built audio visual, Wifi and a 65-inch in-built TV with sound bar. It's the perfect place to hold any business meeting or event.

### CAPACITY AT A GLANCE




		
Boardroom	Classroom	U-Shape
18	20	21

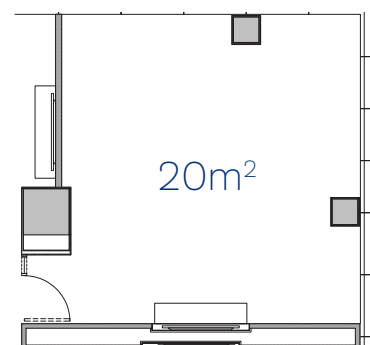


## BANK ROOM

This private and functional space on the second floor has a ton of natural light and offers city views. You'll love this unique and modern space for your next boardroom meeting or cocktail party.

### CAPACITY AT A GLANCE

		
Boardroom	Classroom	U-Shape
10	10	14








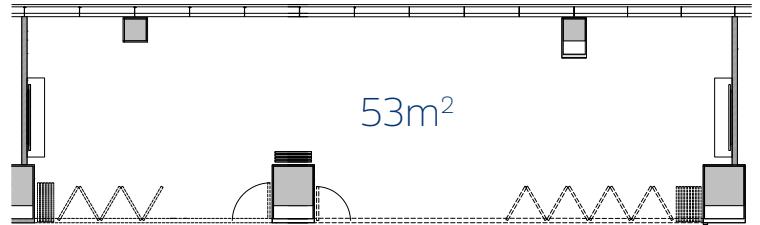
# MEET YOU THERE

## ST AUGUSTINE & TRAMWAY ROOM COMBINED

Enjoy city views day and night within the St Augustine and Tramway Room combined space. Suitable for larger or more intimate events, this space offers multiple configuration options and can accommodate up to 52 people.

### CAPACITY AT A GLANCE

		
Boardroom	Classroom	U-Shape
30	27	-



### CAPACITY SNAPSHOT

Level	Room	Sqm	Banquet	Cabaret	Theatre	U-shape	Boardroom	Classroom	Cocktail
2	Exchange Room	37	36	30	40	24	22	30	36
2	St Augustine Room	28	11	10	15	11	10	10	16
2	Tramway Room	25	16	12	36	21	18	20	28
2	Bank Room	20	14	10	27	14	10	10	24
2	St Augustine & Tramway Combined	53	24	12	52	-	30	27	44

## EVENTS WITH BENEFITS

- Floor to ceiling windows with plenty of natural light and black out blinds
- Complimentary in-built audio visual and Wifi
- 65-inch in-built television with sound bar
- Flexible furniture with in-built power
- Complimentary whiteboard / flip chart
- Various room configuration options

[events@proinvesthotels.com](mailto:events@proinvesthotels.com) | +61 (0)2 4064 8863



# WORK OUT YOUR **PERFECT PRICE**

## FULL DAY

Includes morning tea, lunch and afternoon tea

# \$75

per person, per day

## HALF DAY

Includes morning tea OR afternoon tea and lunch

# \$65

per person, per day

## EXPECT MORE



- 312 Twin, Queen, King and Super King rooms with a study nook
- Free EXPRESS Start breakfast
- 50–55 inch SMART TV
- Tea & coffee making facilities
- Individually-controlled A/C
- In-room minibar (unstocked)
- Iron and ironing board
- Daily housekeeping
- Free Wifi
- 24-hour reception
- Self-service laundry
- Flexible workspaces
- 24-hour food and beverage offering with a call & collect option
- On-site secure car park
- Express check-in and check-out
- Fitness centre
- Luggage storage
- Dry cleaning available
- Wheelchair access



### HOLIDAY INN EXPRESS MELBOURNE LITTLE COLLINS

597-599 Little Collins Street,  
Melbourne, VIC 3000

T: +61 (0)2 4064 8863  
E: events@proinvesthotels.com

### AIRPORTS

Melbourne Tullamarine Airport, 23km  
Melbourne Avalon Airport, 53.1km

### PUBLIC TRANSPORTATION

130m walk to Southern Cross Station  
1.4km to Flinders Street Station

### NEARBY ATTRACTIONS



5m Central Business District  
700m to Marvel Stadium  
500m to Sealife Melbourne Aquarium  
1.2km to Etihad Stadium

### NEARBY RESTAURANTS



850m walk to Hardware Lane  
1km walk to China Town

### NEARBY SHOPPING



1km to Central Shopping District  
1.4km to Queen Victoria Market



AN IHG® HOTEL  
MELBOURNE  
LITTLE COLLINS