

INTRODUCING MELBOURNE'S NEWEST **MEETING AND EVENT DESTINATION**



AN IHG® HOTEL
MELBOURNE
SOUTHBANK



Holiday Inn Express
Melbourne Southbank

Holiday Inn Express





MORE OF WHAT **YOU NEED**

ROOMS

345 rooms over 15 floors

Free Express Start Buffet Breakfast and Wi-Fi in every rate

12 different room categories with flexible configurations

Ensuite bathroom with power shower and quality towels

Personally controlled air conditioning

High quality bedding with soft or firm pillows

Iron, ironing board, hairdryer

Staycast technology TV's in every room

(King rooms 55", Standard rooms 49")

Tea and coffee making facilities

In-room safe

Minibar fridge (unstocked)

Inbuilt black-out blinds

ROOM TYPES

Queen Standard / Queen Standard High Floor

Twin Standard / Twin Standard High Floor

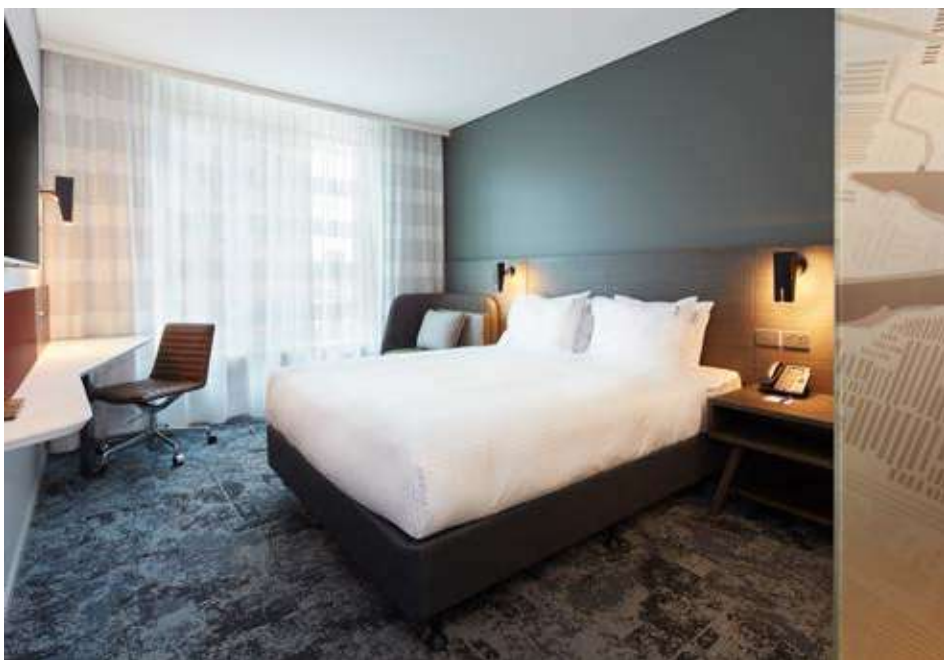
Superior Twin / Superior Twin High Floor

King Standard / King Standard High Floor

King Bed High Floor & Extra Floor Space

King Bed Botanical Garden View

Queen Accessible / Queen Accessible High Floor







EVERYTHING YOU **COULD WANT**

FACILITIES

Outdoor Winter Garden Terrace

Spacious Great Room with free Wi-Fi

Flexible work and social spaces

Four flexible meeting spaces (up to 120 pax), with additional break out spaces

Spacious driveway with the ability to fit three large coaches

On-site car parking

24 hour food and beverage offering and reception

Fitness room with 24-hour access

Self-service guest laundry

Dry cleaning available

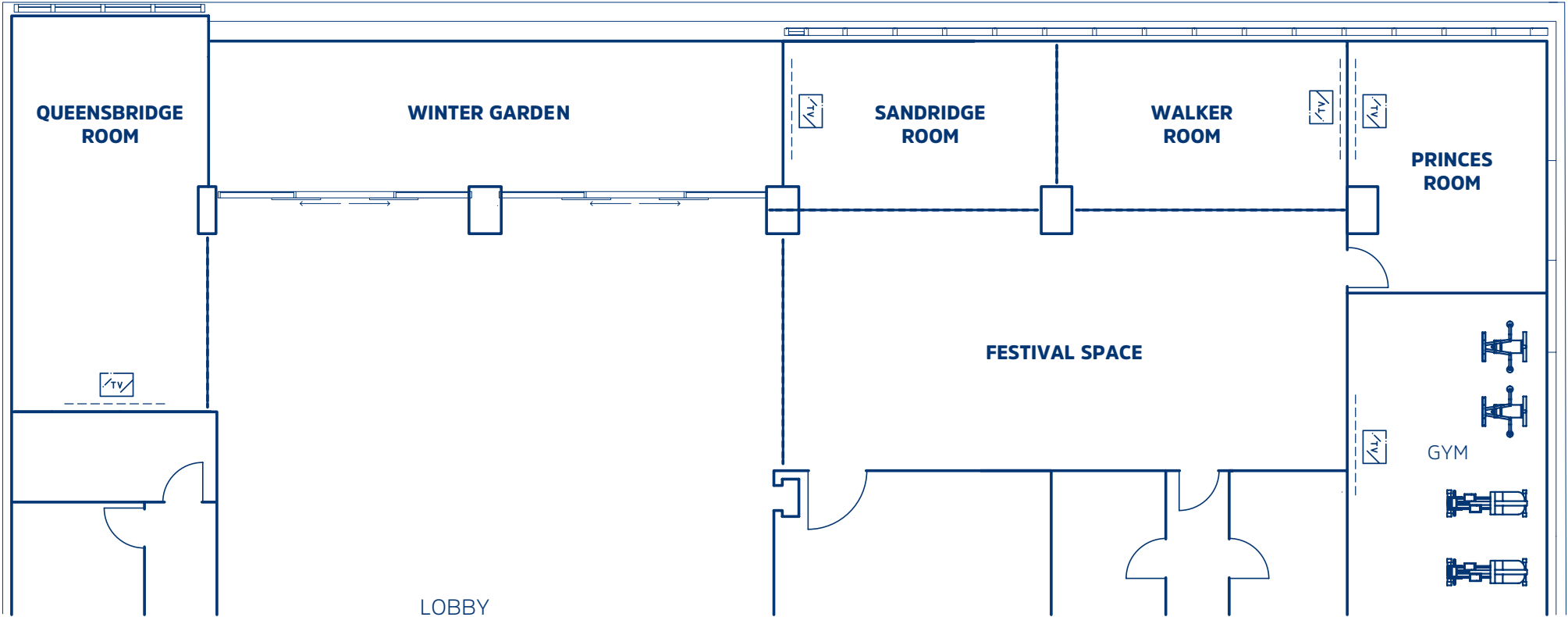
Free business centre and iPad use





THE GREAT ROOM

FLOOR PLAN





EVENTS

WITH BENEFITS



Free Wi-Fi



Sweets



Coffee and tea



Flip chart



White board



Conferencing facilities



Buffet breakfast



Access to happy hour



AV facilities - TV, laptop connectivity & projector



Accommodation packages

QUEENSBRIDGE ROOM

A light filled space with aspects over the Southbank city scape and a modern, urban style design, the Queensbridge Room is perfect for corporate meetings and medium-sized conferences.

Utilize the flexible break out spaces for lunch or dine alfresco on the adjoining Winter Garden Terrace.

FEATURES

Natural light with black out blinds

Complimentary in-built audio visual and Wi-Fi

65-inch in-built television with sound bar

Flexible furniture with in-built power

Complimentary whiteboard and flip chart

BOARDROOM	27
HOLLOW SQUARE	26
CLASSROOM (2 PAX)	20
BANQUET	24
CABARET	18
U-SHAPE	20
THEATRE	54
COCKTAIL	65



SANDRIDGE ROOM

Floor to ceiling windows flood Sandridge Room with natural light and views of the Melbourne city skyline.

A fantastic space for board meetings or smaller conferences, Sandridge Room has the flexibility to adjoin with Walker Room.

FEATURES

Natural light with black out blinds

Complimentary in-built audio visual and Wi-Fi

65-inch in-built television with sound bar

Flexible furniture with in-built power

Complimentary whiteboard and flip chart

BOARDROOM	10
CLASSROOM (2 PAX)	12
THEATRE	30
COCKTAIL	40





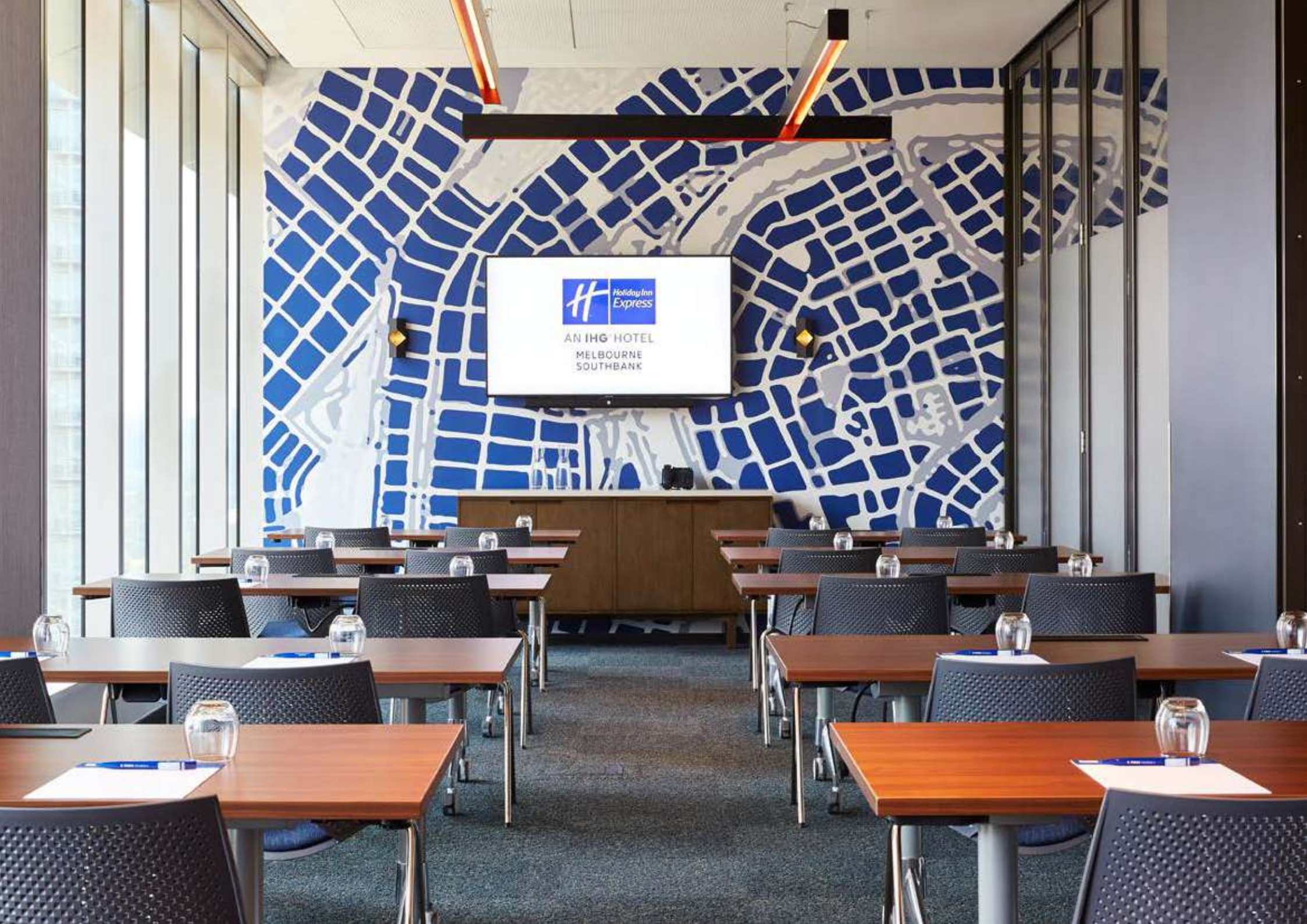
WALKER ROOM

Adjoining Sandridge Room, Walker Room also boasts of floor to ceiling windows and aspects of Melbourne CBD and Flinders Street Station.

FEATURES

- Natural light with black out blinds
- Complimentary in-built audio visual and Wi-Fi
- 65-inch in-built television with sound bar
- Flexible furniture with in-built power
- Complimentary whiteboard and flip chart

BOARDROOM	10
CLASSROOM (2 PAX)	14
THEATRE	25
COCKTAIL	30



AN IHG HOTEL
MELBOURNE
SOUTHBANK

SANDRIDGE AND WALKER ROOM COMBINED

Combine Sandridge and Walker Room to create the ultimate light-filled meeting space with sweeping views over the city skyline and Flinders Street Station.

FEATURES

Natural light with black out blinds

Complimentary in-built audio visual and Wi-Fi

65-inch in-built television with sound bar

Flexible furniture with in-built power

Complimentary whiteboard and flip chart

BOARDROOM	36
CLASSROOM (2 PAX)	24
CABARET	24
THEATRE	55
COCKTAIL	70



PRINCES ROOM

An intimate meeting space, Princes Room offers floor to ceiling natural lighting with views of Flinders Street Station.

FEATURES

Natural light with black out blinds

Complimentary in-built audio visual and Wi-Fi

65-inch in-built television with sound bar

Flexible furniture with in-built power

Complimentary whiteboard and flip chart

BOARDROOM

8

U-SHAPE

8

THEATRE

22



FESTIVAL SPACE

Combine Sandridge, Walker and the Great Room to create the perfect, light filled versatile event space.

Perfect for larger style theatre or classroom set ups, this space can also be used to host vibrant, private cocktail functions or even a dinner.

FEATURES

Natural light with black out blinds

Video wall and additional 65-inch televisions

Complimentary in-built audio visual and Wi-Fi

Flexible furniture with in-built power

Complimentary whiteboard and flip chart

THEATRE	120
BANQUET	80
CABARET	60
BOARDROOM	36
U-SHAPE	23
CLASSROOM	68
COCKTAIL	150



WINTER GARDEN TERRACE

Enjoy an alfresco post-conference cocktail event on the Winter Garden Terrace.

With flexible set up and seating, the Winter Garden Terrace is perfect for networking events or an alternative breakout space.

FEATURES

Flexible seating and set up

In-built Sound system

Ability to extend the space into pre function area

COCKTAIL

60







THE DINING ROOM

A private event space within the Great Room Restaurant, The Dining Room's windows are adorned with views of the Botanical Gardens, Arts Centre and Melbourne's sporting precinct.

The perfect space for a cocktail function and sit-down dinner.

COCKTAIL	80
BOARDROOM TABLE	34
SCATTERED TABLES	40



CAPACITY SNAPSHOT

ROOM AND ARRANGEMENT	Boardroom style	Boardroom style (Hollow Square)	Classroom style (2 PAX)	Banquet style	Cabaret style	U-Shape style	Theatre style	Cocktail style
Queensbridge Room	24	26	20	24	18	20	54	65
Sandridge Room	10	—	12	—	—	—	30	40
Walker Room	10	—	14	—	—	—	25	30
Sandridge & Walker Combined	36	—	24	—	24	—	55	70
Princes Room	8	—	—	—	—	8	22	—
FESTIVAL SPACE	36	—	68	80	60	23	120	180



DAY DELEGATE PACKAGES

FULL DAY

Includes morning tea, lunch and afternoon tea

\$75

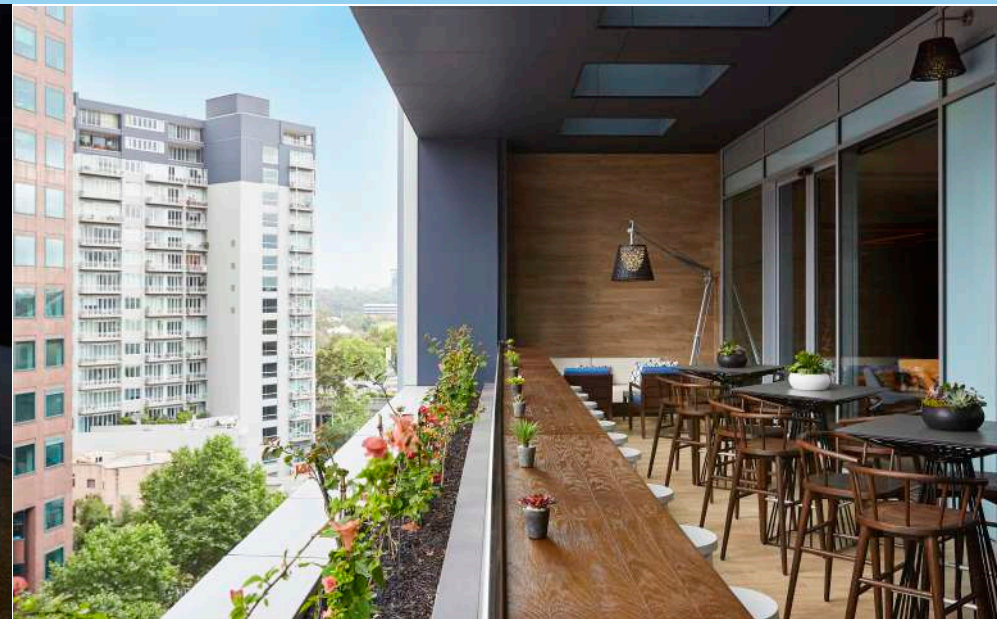
per person, per day

HALF DAY

Includes morning tea OR afternoon tea and lunch

\$65

per person, per day





Holiday Inn Express





AN IHG® HOTEL
MELBOURNE
SOUTHBANK

Holiday Inn Express
Melbourne Southbank

35-47 City Road, Southbank Melbourne VIC 3006
events@proinvesthotels.com