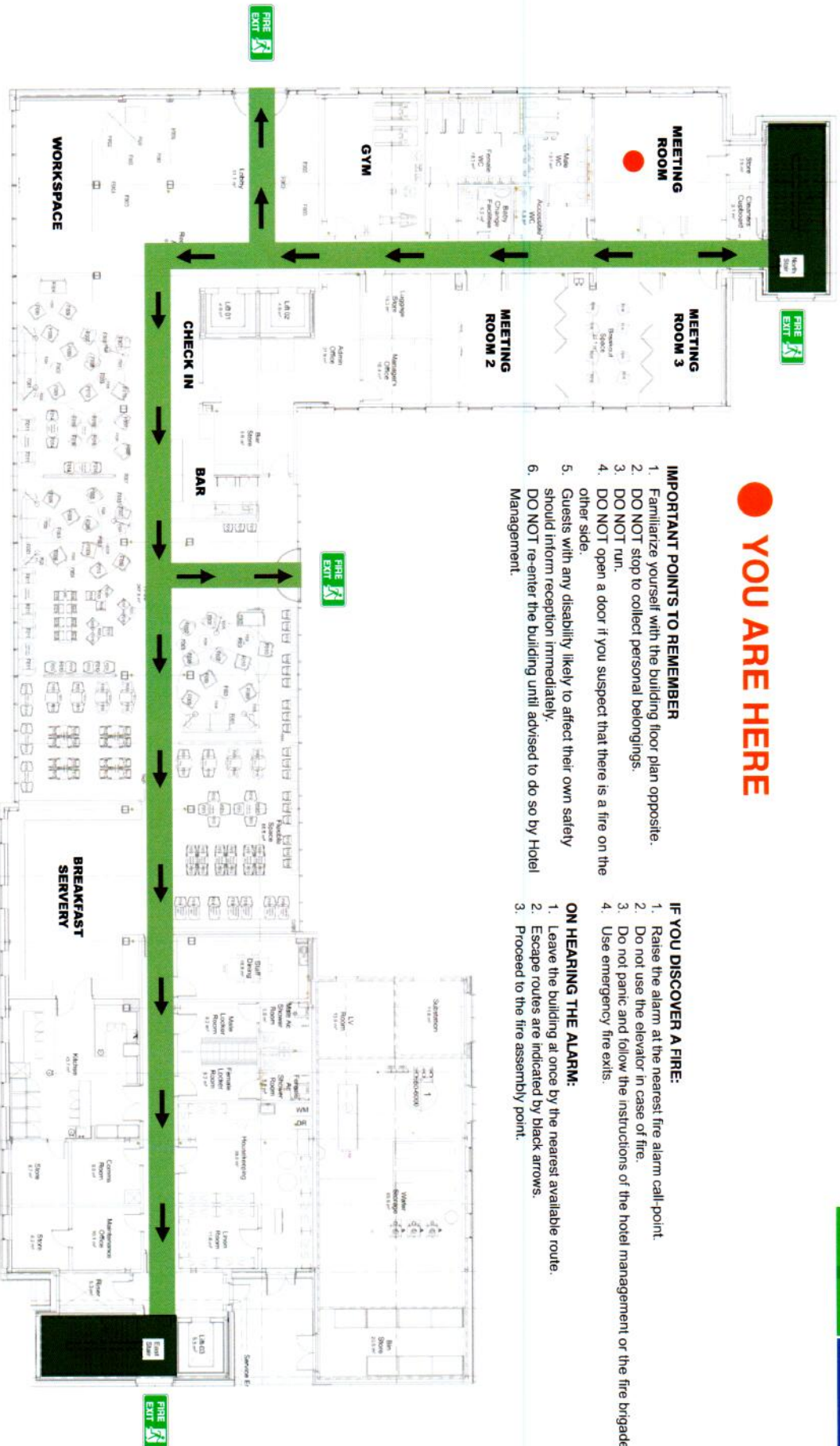


# EMERGENCY ESCAPE ROUTES



**● YOU ARE HERE**



## IMPORTANT POINTS TO REMEMBER

1. Familiarize yourself with the building floor plan opposite.
2. DO NOT stop to collect personal belongings.
3. DO NOT run.
4. DO NOT open a door if you suspect that there is a fire on the other side.
5. Guests with any disability likely to affect their own safety should inform reception immediately.
6. DO NOT re-enter the building until advised to do so by Hotel Management.

## IF YOU DISCOVER A FIRE:

1. Raise the alarm at the nearest fire alarm call point.
2. Do not use the elevator in case of fire.
3. Do not panic and follow the instructions of the hotel management or the fire brigade.
4. Use emergency fire exits.

## ON HEARING THE ALARM:

1. Leave the building at once by the nearest available route.
2. Escape routes are indicated by black arrows.
3. Proceed to the fire assembly point.