



AN IHG® HOTEL Denver Downtown

Conveniently located in the heart of downtown Denver and connected to the iconic Brown Palace Hotel and Spa, the Holiday Inn Express Denver Downtown is truly where value meets luxury. With over 23,000 sq. ft. of meeting space, access to 5 food and beverage outlets and 24-hour room service.



- * Located in the heart of Downtown Denver's Financial District at 17th and Tremont
- * 209 newly-renovated guest rooms and 17 luxurious suites
- * Complimentary Express Start™ Breakfast Bar
- * Complimentary 100 MBPS Wi-Fi in all guest rooms
- * State-of-the-art Fitness Center
- * 23,000 sq ft of meeting space – in conjunction with the Brown Palace Hotel and Spa
- * Connected by an indoor sky bridge to the Brown Palace Hotel and Spa featuring:
 - * Six restaurants including cocktails and bites, fine dining, breakfast, lunch, dinner, coffee and tea, brunch and more
- * World-class Spa with charging privileges to guest rooms
- * IHG Rewards Club, Business Rewards and Member of IHG Green Engage



Dan DeHerrera- Director of Sales
303-312-5929
DDeHerrera@hixdenver.com

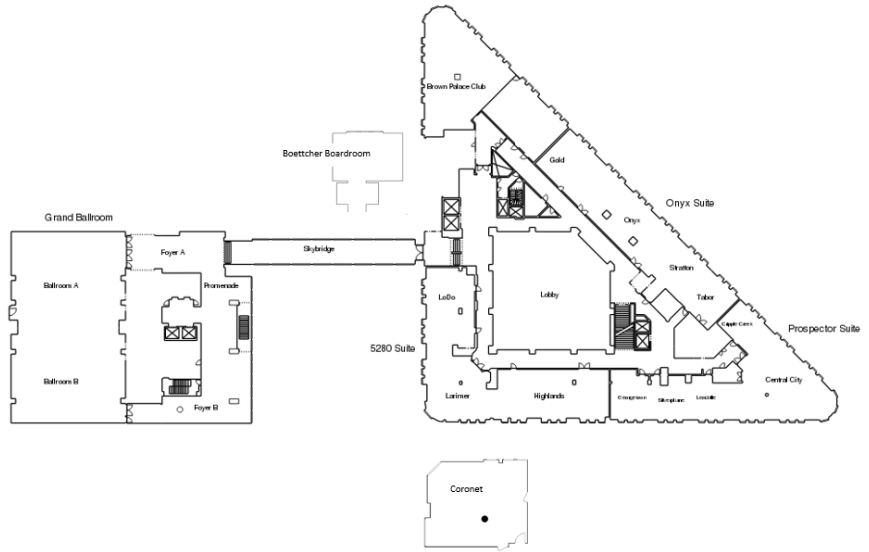
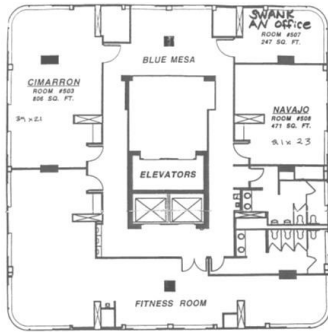
Laurie Poindexter- National Sales Manager
303-312-5921
LPoindexter@hixdenver.com

Holiday Inn Express Denver Downtown
www.hiexpress.com/denverdowntown
401 17th Street, Denver, CO 80202
303-269-0400



AN IHG® HOTEL

Denver Downtown
401 17th Street, Denver, CO 80202



Meeting and Banquet Facilities

Room	Theatre	Classroom	U-Shape	Reception	Banquet	Conference	Sg. Ft.
Gold	25	15	15	25	25	20	500
Onyx	100	45	45	100	100	35	1425
Stratton	25	15	15	30	30	20	487
Tabor	40	20	20	40	40	25	483
Cripple Creek	24	15	15	20	20	15	340
Central City	90	80	30	90	90	35	2150
Leadville	25	15	15	25	20	15	336
Silverplume	25	15	15	30	20	15	357
Georgetown	30	20	20	30	30	20	400
Highlands	100	60	46		90	46	1480
Larimer Square	60	50	30		50	30	1060
LoDo	70	60	34		60	34	1000
Ballroom	600	320		800	400		5800
Section A	300	150	60	402	200	50	2900
Section B	300	150	60	398	200	50	2900
Ellyngton's				250	150		5408
Brown Palace Club				100	80		3080
Boettcher Board Room						14	365
Coronet	40	25	20	30	30	20	672
Cimarron	25	20	12	50	40	18	860
Navajo	15	10	12	25	25	15	427