



## Denver Downtown



An 11 Million dollar renovation inspired by Colorado's beautiful outdoors brings a modern look and feel to this unique, affordable Downtown Denver hotel, transforming it into Denver's NEW premier destination for travelers.

- Located in the heart of Downtown Denver's Financial District at 17<sup>th</sup> and Tremont
- 209 newly-renovated guest rooms and 22 luxurious suites
- Complimentary *Express Start*™ Breakfast Bar
- Complimentary 100 Mbps Wi-Fi in all guest rooms
- State-of-the-art Fitness Center
- 20,000 sq ft of meeting space – in conjunction with The Brown Palace Hotel and Spa
- Connected by an indoor sky bridge to 6 food and beverage outlets and world-class spa with charging privileges to guest rooms
- IHG Rewards Club and Business Rewards
- Member of IHG Green Engage

### Contact us

Dan DeHerrera  
Director of Sales  
D: 303-312-5929

E: [ddeherrera@hixdenver.com](mailto:ddeherrera@hixdenver.com)

Michael Harrington  
National Sales Manager  
D: 303-312-8955

E: [mharrington@hixdenver.com](mailto:mharrington@hixdenver.com)

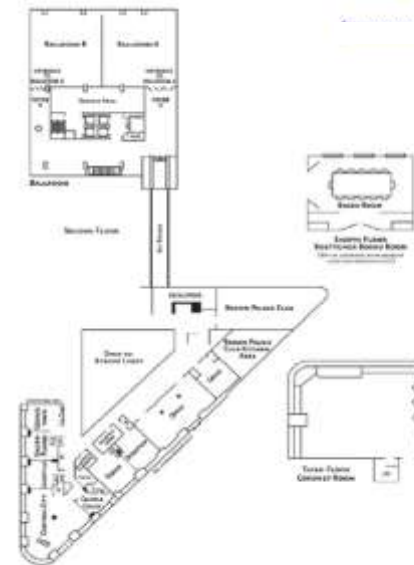
### Holiday Inn Express Denver Downtown

401 17<sup>th</sup> Street

Denver, CO 80202

[www.hiexpress.com/denverdowntown](http://www.hiexpress.com/denverdowntown)





## Meeting and Banquet Facilities

Room	Theatre	Classroom	U-Shape	Reception	Banquet	Conference	Sq. Ft.	Ceiling	Dimensions
Gold*	25	15	15	25	25	20	500	12'10"	25X20
Onyx*	100	45	45	100	100	35	1425	12'6"	57X25
Stratton	25	15	15	30	30	20	437	12'10"	19X23
Tabor	40	20	20	40	40	25	483	12'10"	21X23
Cripple Creek **	24	15	15	20	20	15	340	9'6"	17X20
Central City**	90	80	30	90	90	35	2150	9'6"	43X50
Leadville**	25	15	15	25	20	15	336	9'6"	16X21
Silverplume**	25	15	15	30	20	15	357	9'6"	17X21
Georgetown**	30	20	20	30	30	20	400	9'6"	19X21
Ballroom***	600	320		800	400		5800	16'8"	100X58
Section A***	300	150	60	402	200	50	2900	16'8"	50X58
Section B***	300	150	60	398	200	50	2900	16'8"	50X58
Coronet	40	25	20	30	30	20	672	8'	24X28
Ellyngton's				250	150		5408	16'	26X208
Brown Palace Club				100	80		3080		28X110
Boettcher						14	365		24X17
Cimarron	25	20	12	50	40	18	860	12'6"	52X26
Navajo	15	10	12	25	25	15	427	12'6"	24X26

**Holiday Inn Express Denver Downtown**

401 17<sup>th</sup> Street

Denver, CO 80202

[www.hixexpress.com/denverdowntown](http://www.hixexpress.com/denverdowntown)