



AN **IHG**<sup>®</sup> HOTEL

ANTWERP - CITY CENTRE

SMART & SIMPLE TRAVEL









# Welcome

At Holiday Inn Express Antwerp - City Centre, we're dedicated to providing seamless planning and comfortable stays for your guests. With modern amenities and a prime location, we're your partner in crafting unforgettable journeys.







- 
1. Location
  2. Rooms
  3. Breakfast
  4. Catering services
  5. Meeting facilities
  6. Additional info
  7. Sustainability
  8. Contact information

# LOCATION

## A CITY CENTRE LOCATION

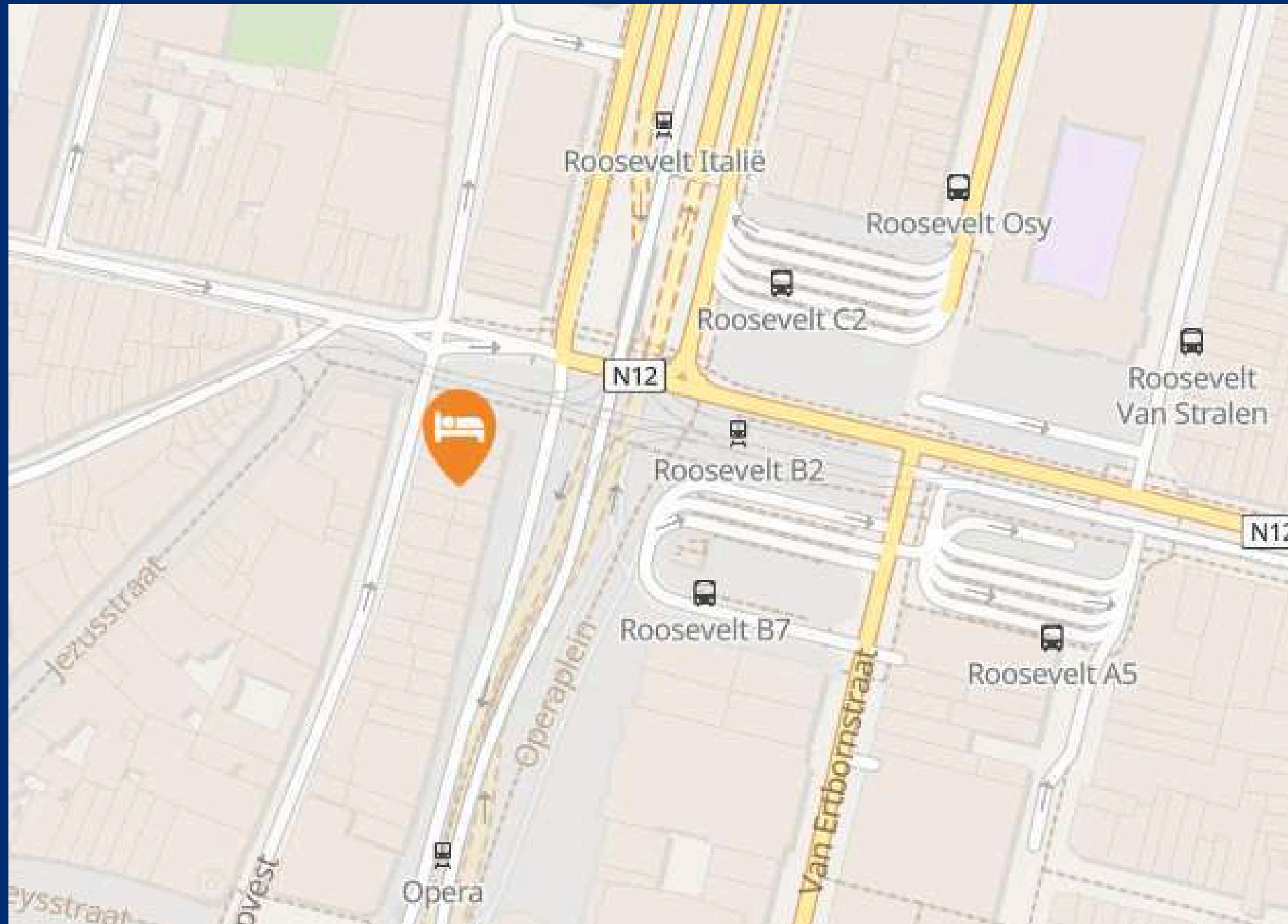
An Antwerp City Centre location, opposite the state-of-the-art Opera, at the doorstep of the city's main public transportation connections. A brand-new hotel at only 5 minutes walking from Antwerp Central Station that offers a direct 30 minutes train connection to Brussels International Airport. It takes 20 minutes by car to Antwerp International Airport.



Discover the vibrant city of Antwerp by strolling to the commercial and authentic shopping areas, museums, restaurants and bars, this pocked sized metropolis has to offer. The Flanders Meeting and Convention Centre and the Antwerp University city campus are a short walk away.

Drive easily within 15 minutes to the major Port of Antwerp. There is a public car parking at the opera square with electric charging points. The modern city offers park and ride options with a direct public transportation connection just outside the city.





## IMPORT LOCATIONS

Located in the heart of Antwerp, the city's Central Station serves as a bustling hub for travelers, just 0.55 kilometers away from the University of Antwerp City Campus and the Flanders Meeting and Convention Centre. Immerse yourself in the rich history of the Old Town, a 1.2 kilometers from the station, where cobblestone streets and medieval architecture await exploration. Whether you're a visitor or a local, these nearby landmarks offer a glimpse into the vibrant culture and heritage of this Belgian city.

- Antwerp Central Station - 0.55 KM
- University of Antwerp City Campus - 0.65 km
- Flanders Meeting and Convention Centre - 0.55 km
- Old town - 1.2 km







# ROOMS

102 smart & simple rooms. The cosy air-conditioned rooms are contemporary in style and decorated in bright, warm colours. You benefit from inclusive Wi-Fi, enjoy complimentary tea or coffee and relax in front of the flat-screen TV. Also iron and ironing board are available.



# DOUBLE ROOM 15 to 22 Sqm

## ROOM AMENITIES

### Bed

- 1 Queen Bed

### Room Classification

- Standard

### Extra's

- Complimentary Coffee/Tea Supplies
- Complimentary Bottled Water
- Double room for single use possible

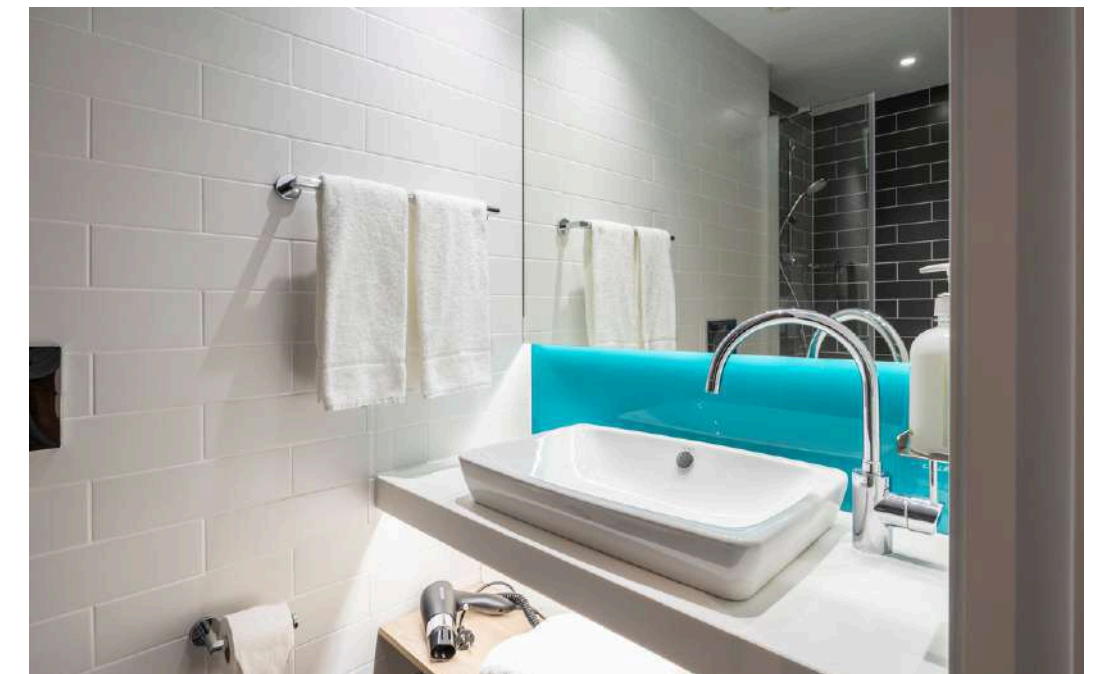
### Bathroom Amenities

- Walk In Shower

### Smoking Policy

- Non-Smoking

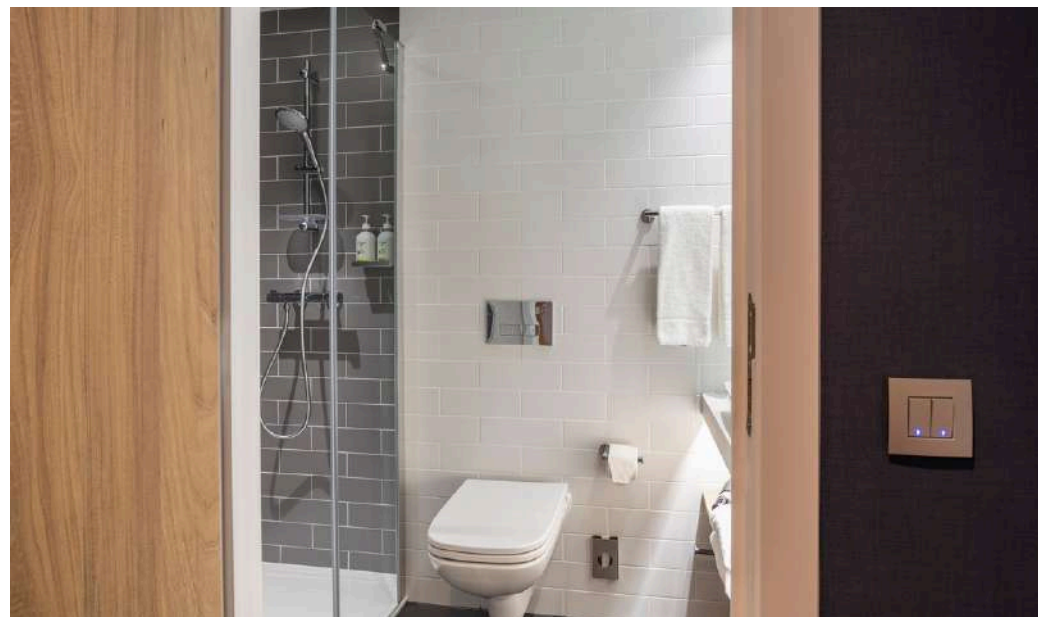
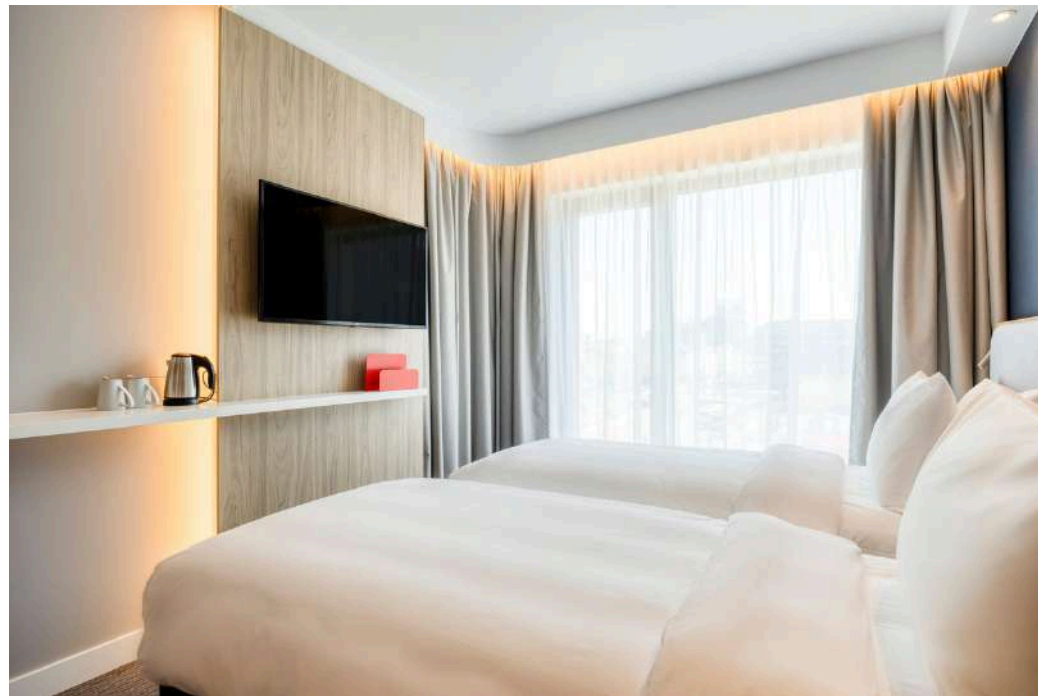
Holiday Inn Express<sup>®</sup> Antwerp – City Centre offers sustainable guestrooms ensuring a good night's sleep and also feature a smart TV and USB connections.





# TWIN ROOM

18 Sqm, total of 24



## ROOM AMENITIES

### Bed

- 2 Single Beds

### Room Classification

- Standard

### Extra's

- Complimentary Coffee/Tea Supplies
- Complimentary Bottled Water

### Bathroom Amenities

- Walk In Shower

### Smoking Policy

- Non-Smoking

Holiday Inn Express<sup>®</sup> Antwerp – City Centre offers free Wi-Fi throughout the hotel. Wake up to an inclusive continental Express Start Breakfast buffet or enjoy a drink or snack in our cosy lobby bar.









# BREAKFAST



# BREAKFAST

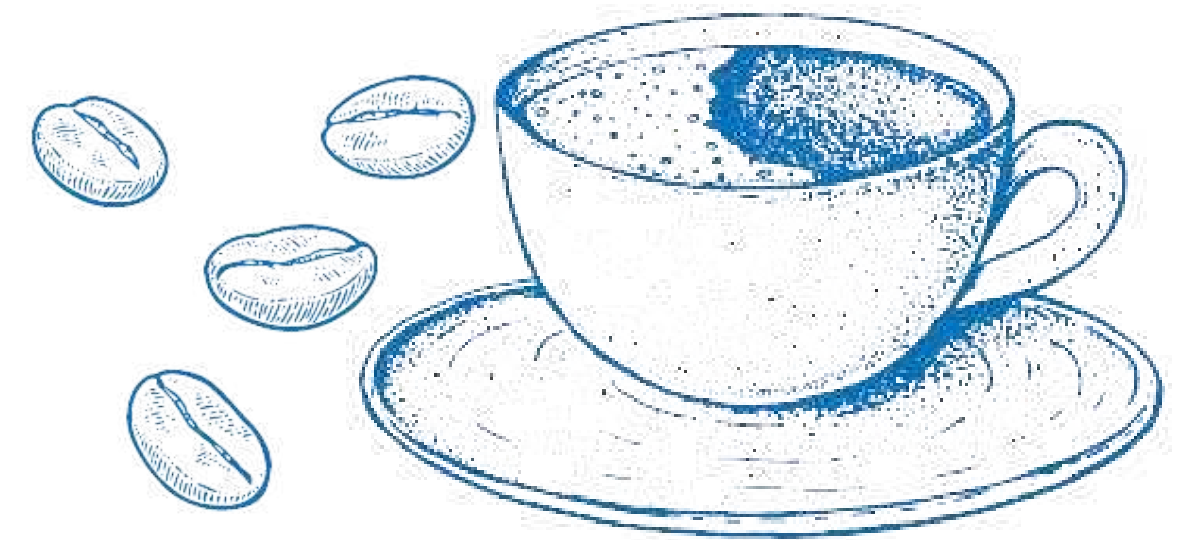
Are you already curious about what your mornings will look like when you stay with us? You will be able to start the day with a hearty breakfast.

What's on the menu? Think creamy scrambled eggs, crispy bacon an extensive cold buffet with cold cuts and cheese and an assortment of fresh rolls, croissants and much more. But that's not all! We also have a waffle station where you can make your own waffles and choose your own toppings.

Whether you start your day with a delicious breakfast before exploring the city or just want to enjoy a leisurely coffee, you'll find everything you need to start your day right.

## ALWAYS INCLUDED

---









# CATERING SERVICES



Tailored to your needs  
by Restaurant Octave



# CATERING SERVICES

Our dinners and lunches are held at Chocolate Nation in their restaurant, Restaurant Octave. Chocolate Nation is The World's Largest Belgian Chocolate Museum.

At Holiday Inn Express, we pride ourselves on offering a comfortable and convenient stay for our guests. While we provide a delicious complimentary breakfast to kickstart your day, we don't offer lunch or dinner options on-site. However, we've partnered with Restaurant Octave by Chocolate Nation, just a stone's throw away, to ensure our guests have access to delectable dining experiences throughout their stay.

Restaurant Octave specializes in crafting menus tailored to your preferences and budget. Whether you're craving a gourmet meal or a quick bite, their culinary experts are dedicated to satisfying your cravings with a delightful array of options. From savory dishes to sweet treats, there's something to tantalize every taste bud.

Lunches and dinners are also available for largers groups.











The culinary team offers multiple catering services; from cocktail receptions to business lunches and sumptuous dinners. In consultation with their chef, they will propose menus tailored to your requests and budget.



They offer cozy connecting rooms for groups ranging from 20 to 250 people. Delight in an exceptional view of the most beautiful railway station and the world's most intriguing chocolate vault. Alternatively, gain a unique perspective on the neighbors of China Town or the chocolate paradise of Chocolate Nation. Their chef is eager to craft a special menu tailored for your group.





# MEETING FACILITIES





We do not offer meeting and event facilities.

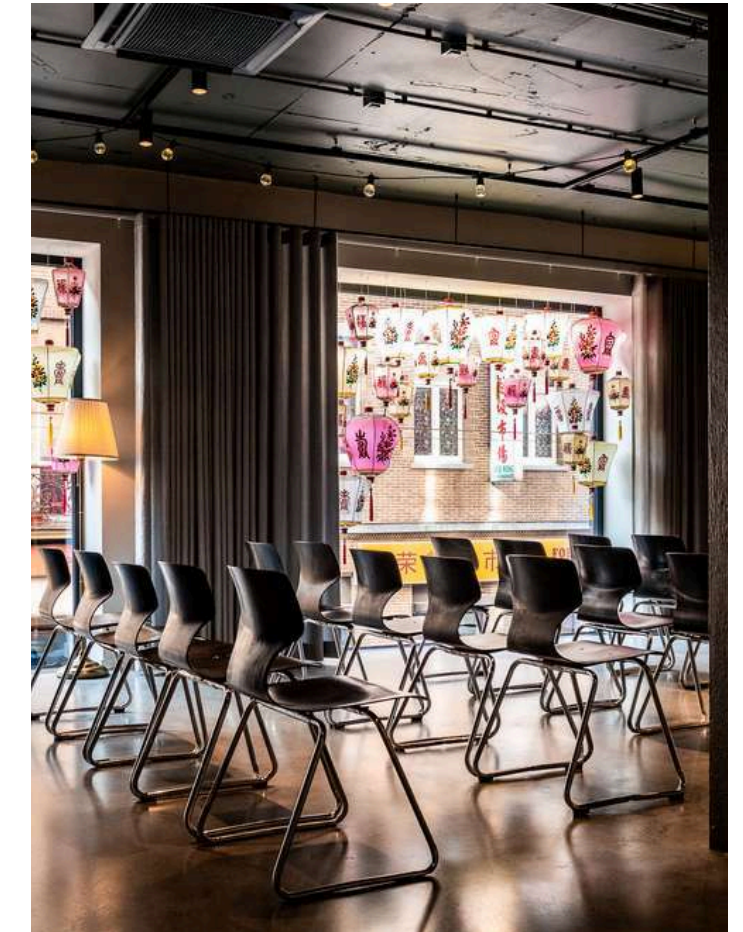
To get more connected with our neighborhood we have teamed up with our friends of Chocolate Nation and Brain Embassy Antwerp. They are both located at less than 5min walking distance. Think about bright & creative venues where you will get inspired.



# OCTAVE

Located in Chocolate Nation, the world's largest Belgian chocolate museum! They offer 6 event rooms available for e.g. presentations, meetings/conferences, press conferences, corporate or private dining... Combine business with pleasure by adding a teambuilding.

- Located at less than 5 minutes walking
- Venues & meeting rooms capacity: 2-200 persons
- Catering services that can be customized to your preferences and dietary needs.
- Breakout areas and social spaces to relax and recharge
- All rooms are equipped with fully connected AV systems, movable screens, handheld wireless microphones and speakers and free wireless internet access



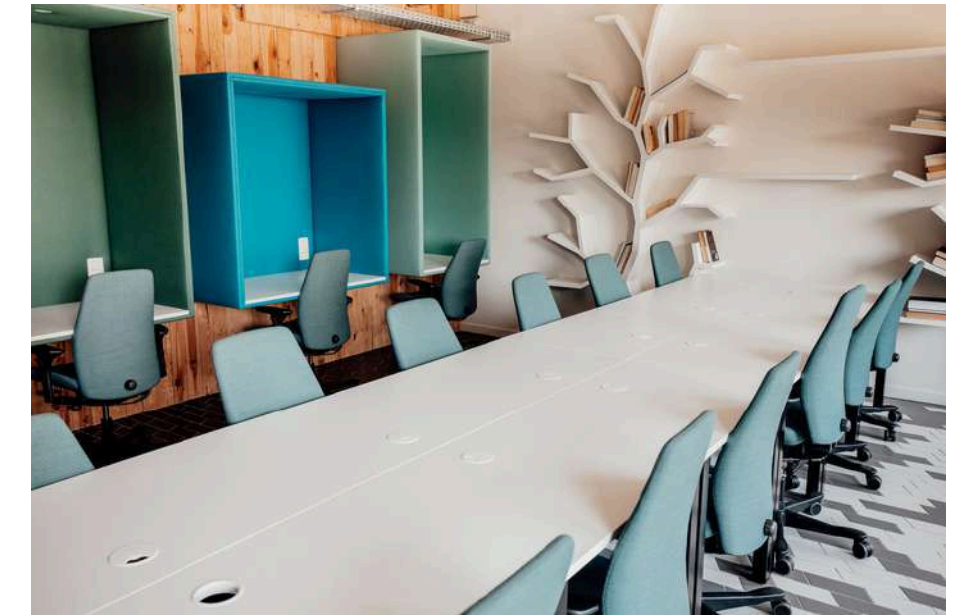


# BRAIN EMBASSY

A coworking space with everything you need to make work, work.

Need a space to brainstorm, do job interviews or organize a big network event? They have the right space for the right occasion!

- Located at less than 5 minutes walking
- Venues & meeting rooms capacity 1-100 persons
- Coffee, tea & water included
- Use of open spaces included
- Catering option: Lunch/snacks can be provided by catering partners.
- All meeting rooms are equipped with high-speed internet, projectors, screens, and sound systems. Some of the larger meeting rooms also have interactive whiteboards





# ADDITIONAL INFO



# PARKING

## COACH PARKING

Busses can load and unload in front of the hotel for max 10min. Parking is available on Vogelzanglaan nearby Antwerp Expo or on d'Herbouvillekaai. Drivers may park their buses there free of charge, and no reservation is required.

More info can be found via the following link  
[Coach parking](#)



## INDIVIDUAL PARKING

Public car parking available at less than 5min walking distance.

Indigo Parking Opera - We offer a discount voucher of 5euro per car per night

Interparking Roosevelt - Reserve a parking spot in advance and save more

**Antwerp has a Low Emission Zone (LEZ). If travelling with your vehicle to Antwerp, please click on below link to register your car:**

<https://lez.antwerpen.be/?Taal=EN> No registration needed for BE & NL cars.



# SUSTAINABILITY

## IHG GREEN ENGAGE

All of our hotels use the IHG Green Engage system, an innovative online environmental sustainability system that gives our hotels the means to measure and manage their impact on the environment. It's our way of making sure we're protecting our surroundings for our guests today, and tomorrow.

## GREENER STAY

Are you staying for more than one night at our hotel? Then you can choose to make a concrete contribution to a greener hotel world by skipping house keeping. For every day that you skip house keeping you will get rewarded with IHG One rewards or a free drink at our bar.

## GREEN KEY CERTIFICATE

Green Key is an international ecolabel for businesses in tourism and recreation that meet high environmental standards. Green Key is a quality label promoting sustainable travel, business meetings, and leisure. So also we, Holiday Inn Express Antwerp - City Centre is committed to sustainability, ensuring our guests can make an environmental impact without sacrificing comfort or affordability.





## ANTWERP BIKE TOURS

You can discover the hidden gems of Antwerp by bike with our guided Antwerp Bike Tours, perfect for groups wanting to explore the city together in an eco-friendly way. Enjoy a special discount for our customers and choose from one of the thematic routes or a customized route, each highlighting a unique aspect of the city and promoting sustainability.

For more information, contact [info@antwerpbiketours.eu](mailto:info@antwerpbiketours.eu) - +32 488 55 38 69 with our regards.

Every km counts for a sustainable impact: [SUSTAINABILITY \(antwerpbiketours.eu\)](https://www.antwerpbiketours.eu).





# Do you want to organise a smart & simple stay?

Contact us and we will provide you  
with a tailor-made proposal

Holiday Inn Express Antwerp - City Centre



Frankrijklei 4-6  
2000 Antwerpen  
<http://www.hiexpress.com/antwerpcc>

Isabeau Maes – Sales Executive  
[sales@hiexacc.com](mailto:sales@hiexacc.com)

