



AN IHG® HOTEL



Holiday Inn Express Saskatoon East - University
1838 College Drive, Bldg #2 | Saskatoon, SK | S1N 2Z8
uexpress@prhotels.ca | (306) 954.1250

Boardroom Style	Hollow Square Style	U-shape Style	Classroom Style	Banquet Style	Reception Style	Theatre Style	Cabaret Style
High Up Above AB							
90	90	78	192	192	225	225	144
Evan Thomas Boardroom							
20	30	24	24	32	35	35	24
Staybridge Social							
				32	50		
Hospitality Suite							
18	18	15	18	16	20	20	12
High Up Above A							
54	54	39	72	72	110	110	56
High Up Above B							
56	54	39	75	72	115	115	56

*The figures above are maximum capacities and assume a set-up consisting of only tables/chairs for the figures that are listed.

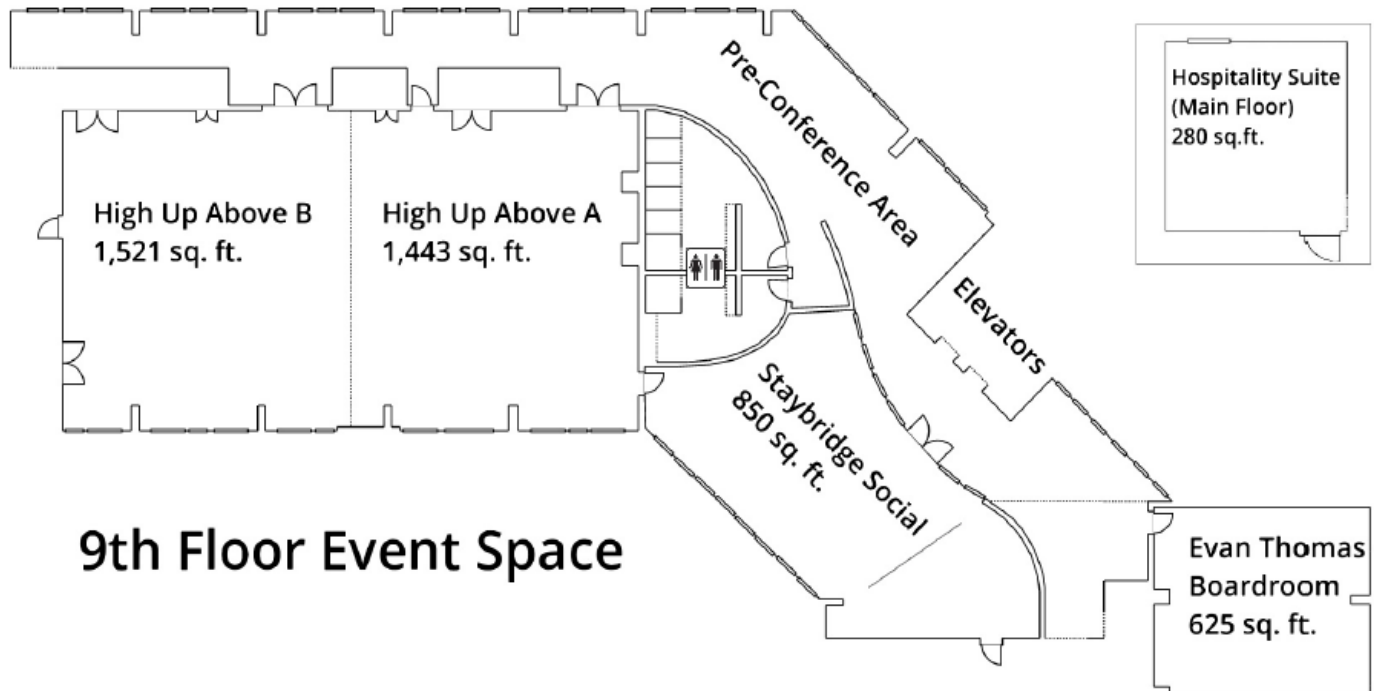
Room Dimensions L X W	Area Sq Ft	Ceiling Height	Door Dimensions	Floor Level	Natural Lighting
High Up Above AB					
76.11 X 39.04	2971.33	13.09	6.92 X 6.00	TOP FLOOR	Yes
Evan Thomas Boardroom					
25.00 X 25.00	625.00	8.01	6.89 X 2.85	TOP FLOOR	Yes
Staybridge Social					
34.12 X 24.93	850.61	11.81	6.89 X 6.00	TOP FLOOR	Yes
Hospitality Suite					
20.01 X 14.11	282.34	7.87	6.89 X 2.99	GROUND	Yes
High Up Above A					
37.07 X 39.04	1447.21	13.09	6.89 X 6.00	TOP FLOOR	Yes
High Up Above B					
39.04 X 39.04	1524.12	13.09	6.89 X 6.00	TOP FLOOR	Yes



AN IHG® HOTEL



Holiday Inn Express Saskatoon East -University
1838 College Drive, Bldg #2 | Saskatoon, SK | S1N 2Z8
uexpress@prhotels.ca | (306) 954.1250



The **Staybridge Social** area hosts guests 7 days/week for breakfasts and on M/T/W's of each week for evening Socials. The area is available for rent **outside** of the following time frames: **6am – 11am (daily)** and **4pm – 8pm (M/T/W)**

For all of your event related details including floor plans, room set-up, catering and AV requirements please contact our dedicated Event Coordinator: **Bonnie Ziebarth | 306.986.5000 | events@prhotels.ca**

