

BASE4

BASE4  
2901 CLINT MOORE ROAD, #114  
BOCA RATON, FLORIDA 33496  
888-901-8008 www.base-4.com

NATE LOEFFELHOLZ  
617, HANSON COURT,  
ONALASKA, WI, 54650

Seal:



Owner:

**WIESER BROTHERS**  
General Contractor, Inc.

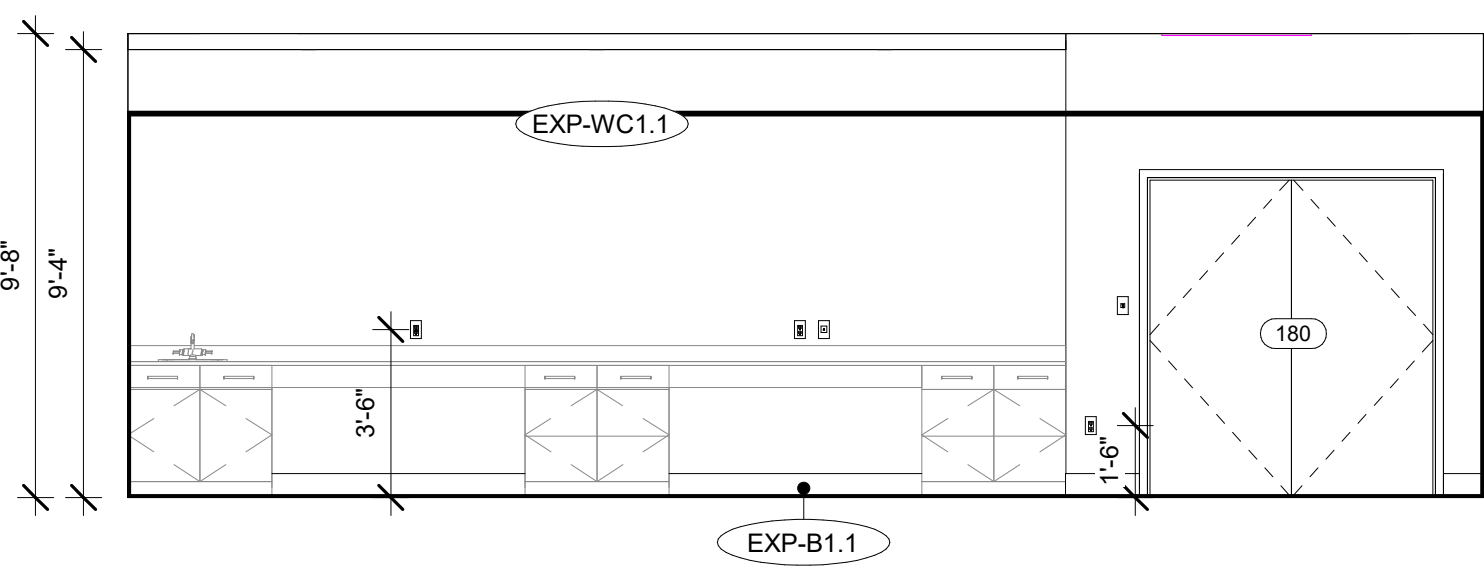
JOHN YOUNGER  
200 TWILITE STREET | LA  
CRESCENT, MN 55947  
507.855.8903



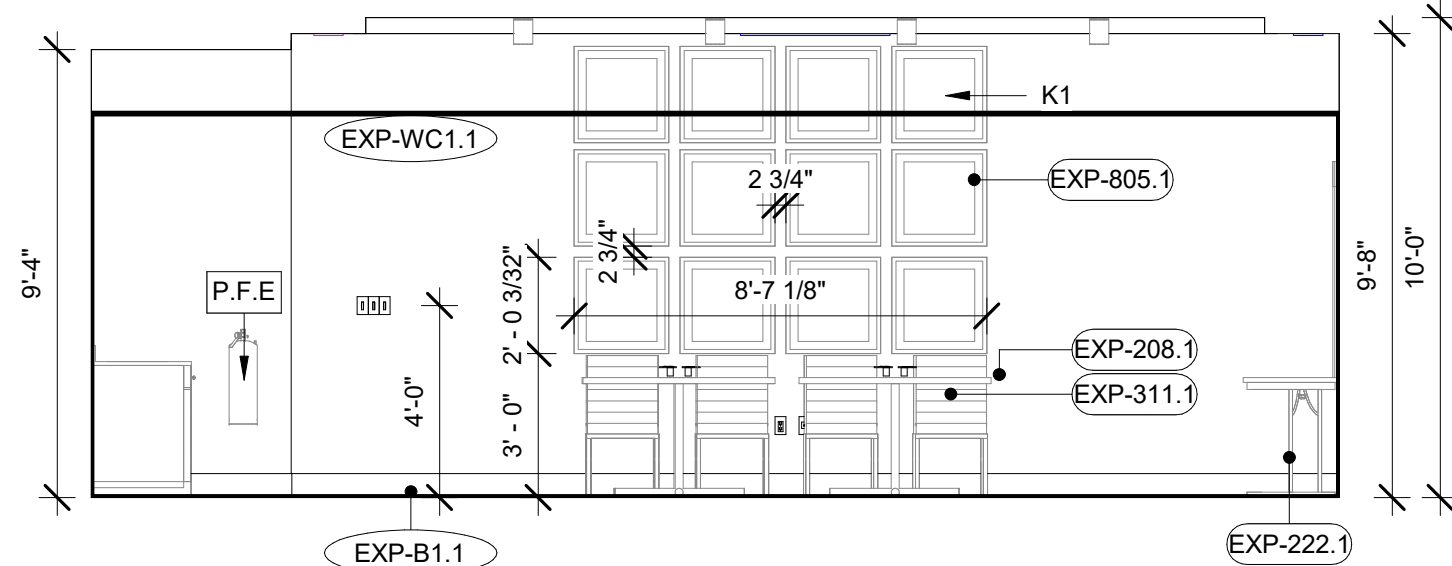
2614 MIDWEST DR. ONALASKA,  
WISCONSIN 54650

PROTOTYPE: 2014 HOLIDAY INN  
EXPRESS, STRAIGHT PAVILION  
(08/08/14)

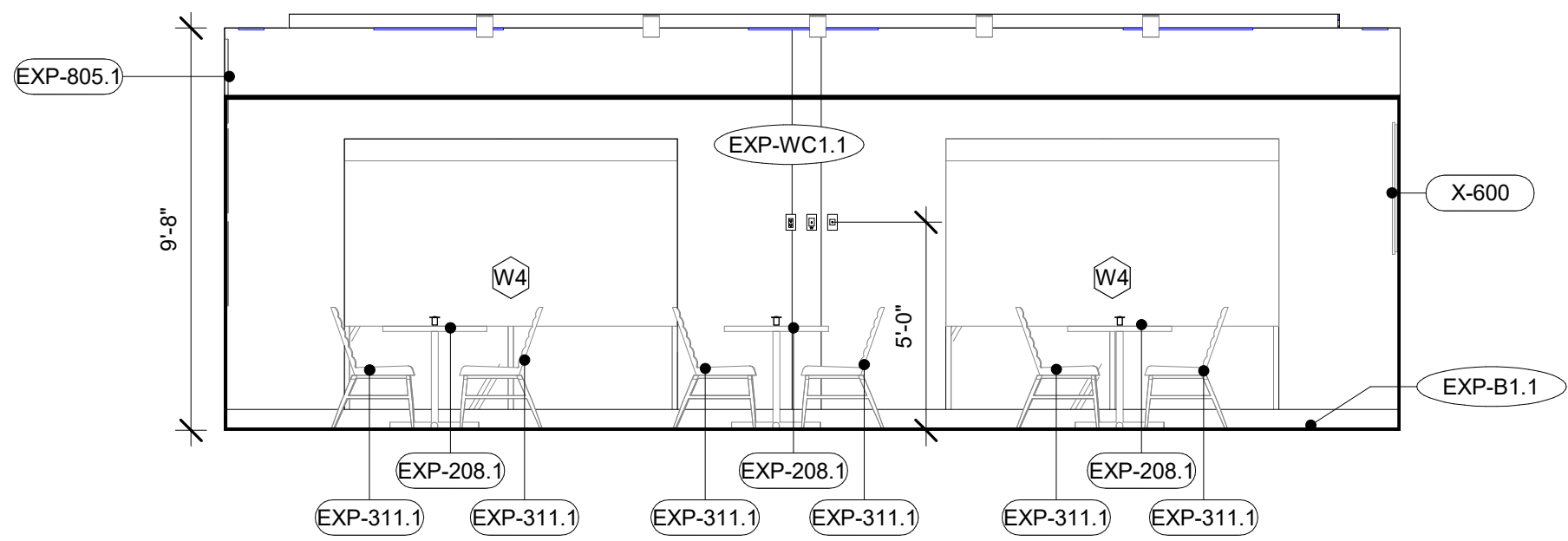
ISSUE NO.	DELTA	ISSUE DATE	DESCRIPTION
11	A11	2020.07.08	CBS
4	A4	2019.10.23	FRANCHISE COMMENTS 100%
1	A1	2019.09.30	ISSUED FOR PERMIT



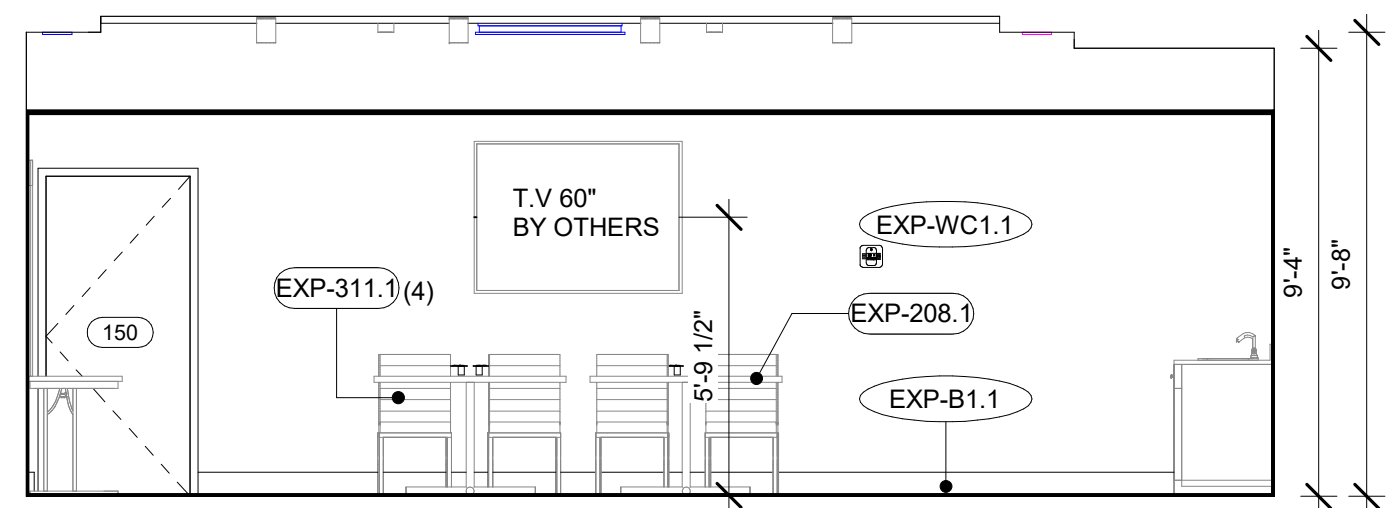
5 ELEVATION  
A-309 1/4" = 1'-0"



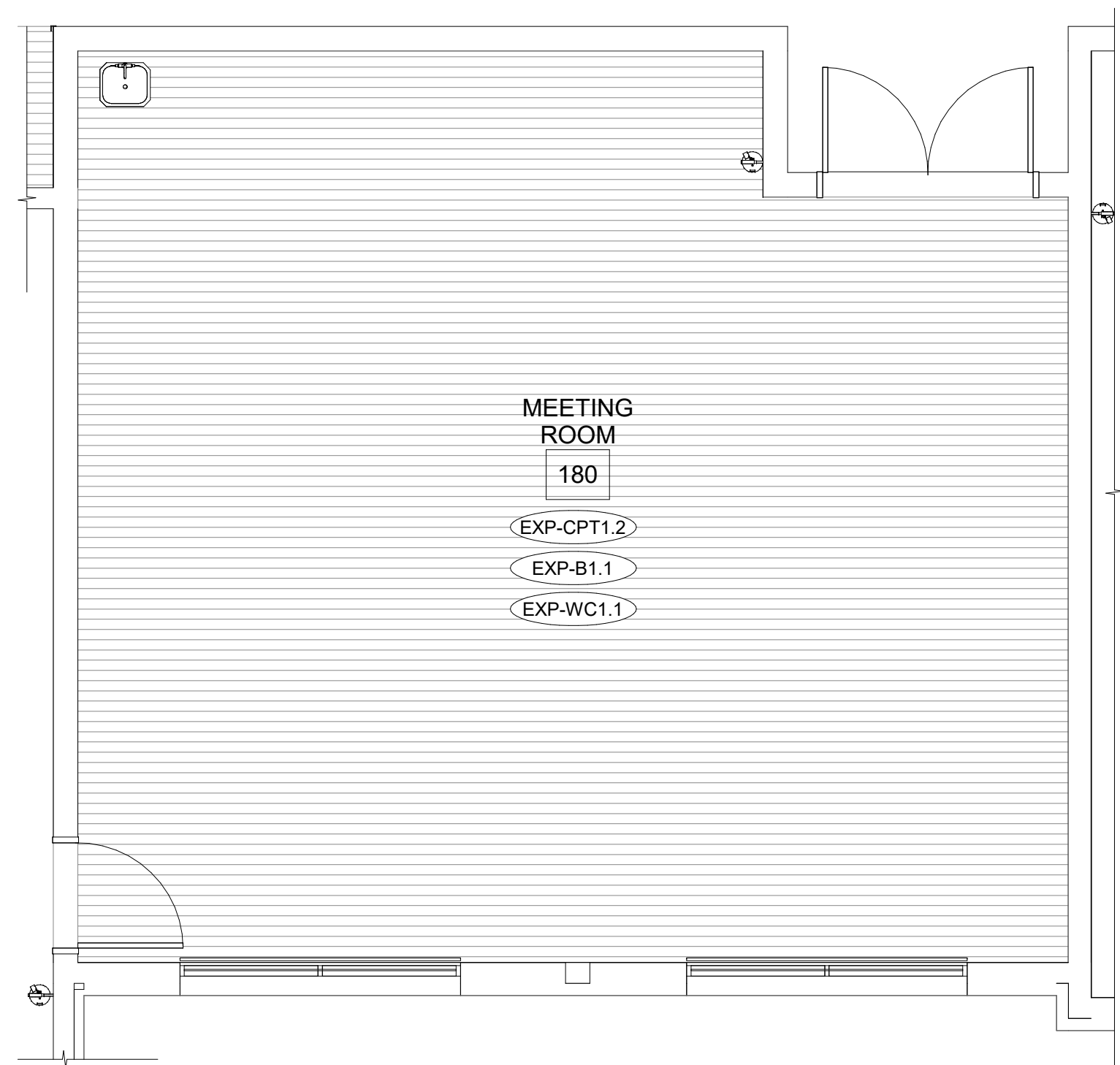
6 ELEVATION  
A-309 1/4" = 1'-0"



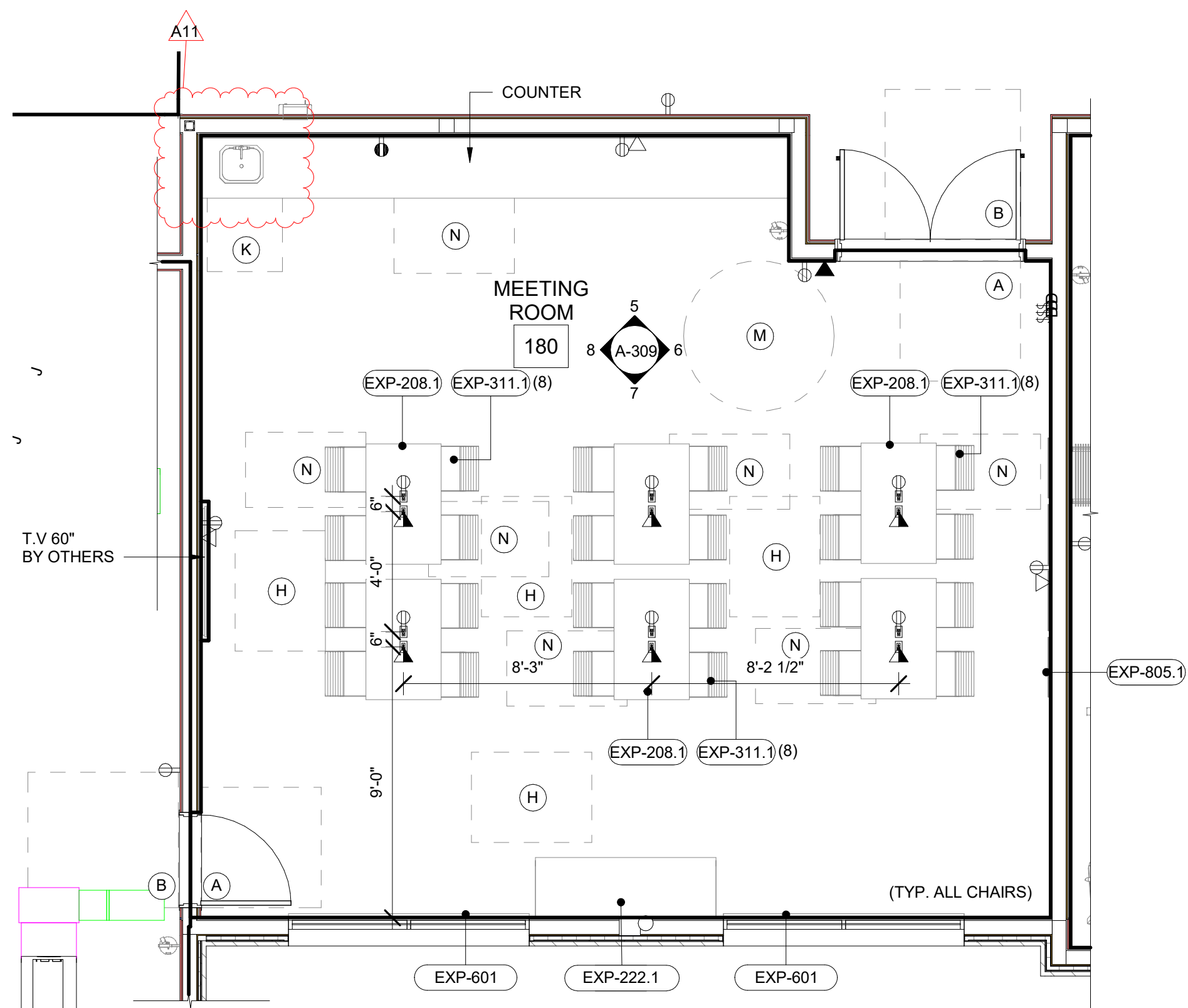
7 ELEVATION  
A-309 1/4" = 1'-0"



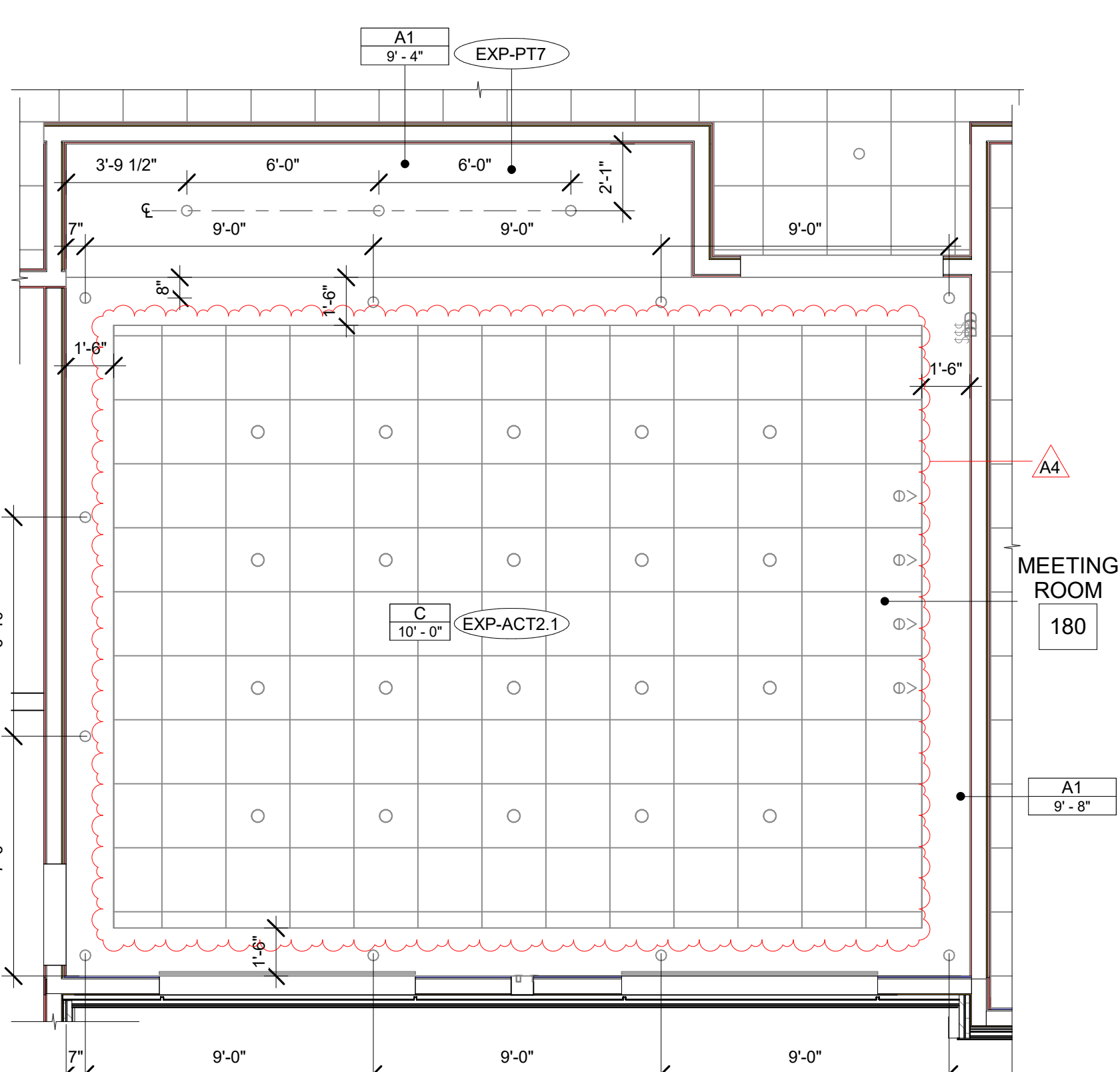
8 ELEVATION  
A-309 1/4" = 1'-0"



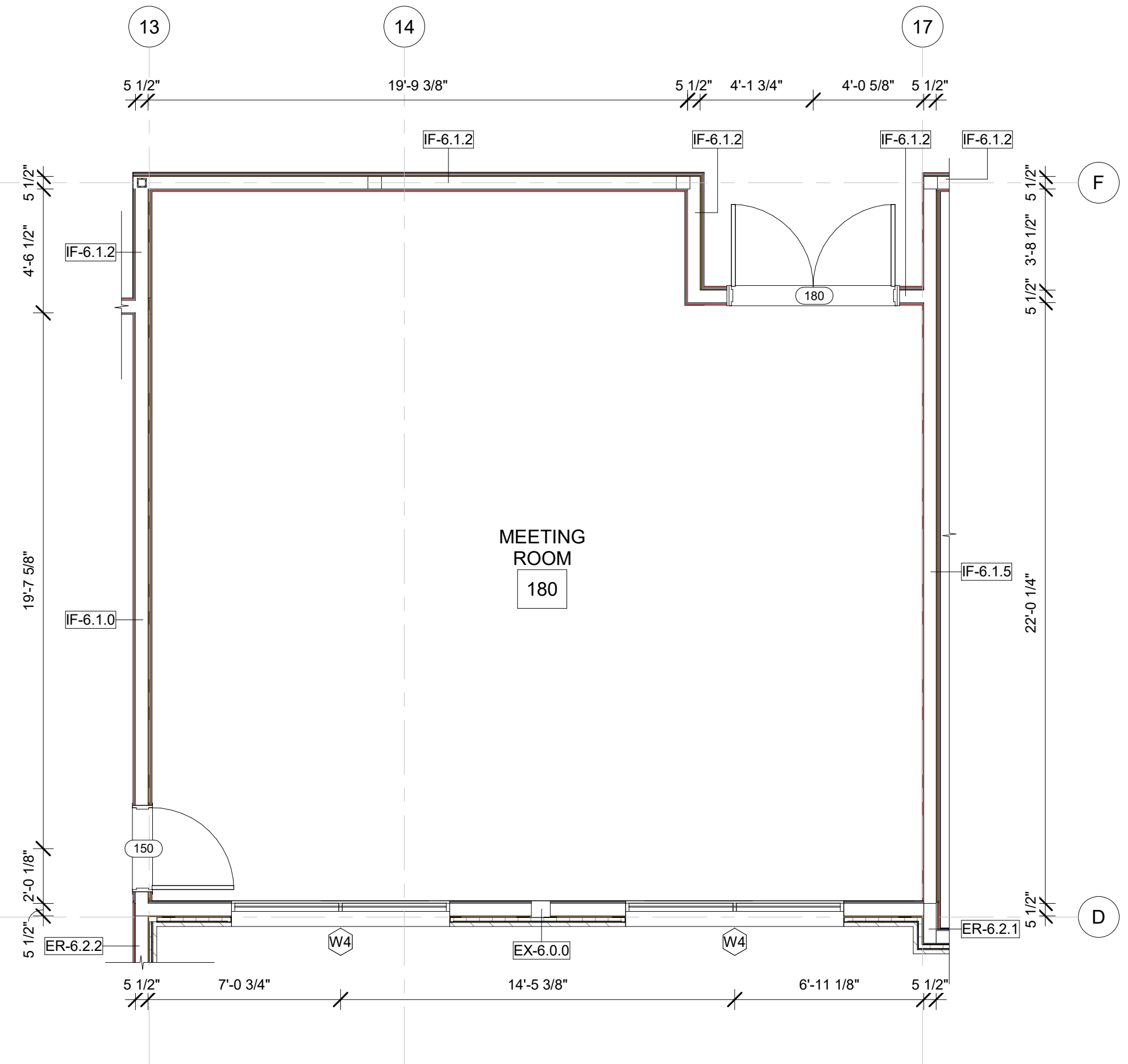
4 FINISH FLOOR PLAN  
A-309 1/4" = 1'-0"



3 FURNITURE AND POWER PLAN  
A-309 1/4" = 1'-0"



2 REFLECTED CEILING PLAN  
A-309 1/4" = 1'-0"



1 CONSTRUCTION PLAN  
A-309 1/4" = 1'-0"

#### GENERAL FLOOR PLAN NOTES

- BASE4 NOTES**
- ALL DIMENSIONS TO FACE OF STUD UNLESS OTHERWISE NOTED.
  - EXTERIOR GRIDLINE ALIGNMENT IS ON FACE OF EXTERIOR SHEATHING, CMU, & CONCRETE.
  - INTERIOR GRIDLINE ALIGNMENT IS ON CENTERLINE OF METAL OR WOOD STUDS, CMU, & CONCRETE.
  - INTERIOR DOORS TO BE MIN. OF 4" FROM ADJACENT WALLS AS SHOWN ON PLANS.
  - PROVIDE MASONRY CONTROL JOINTS IN EXTERIOR CMU WALLS.
  - GYPSUM WALLBOARD CONTROL JOINTS TO BE 30" O.C. MAX. AND AT DOOR JAMBS FROM HEAD TO TERMINATION OF GYPSUM WALLBOARD.
  - REFER TO G-002 FOR ACCESSIBLE GUESTROOM & COMMUNICATION ROOM TABLES.
  - REFER TO SHEETS STARTING ON A-400 FOR ENLARGED GUESTROOM INFORMATION.
  - REFER TO SHEET G-005 FOR ACCESSIBLE CLEARANCE LEGEND.

#### GENERAL RCP NOTES

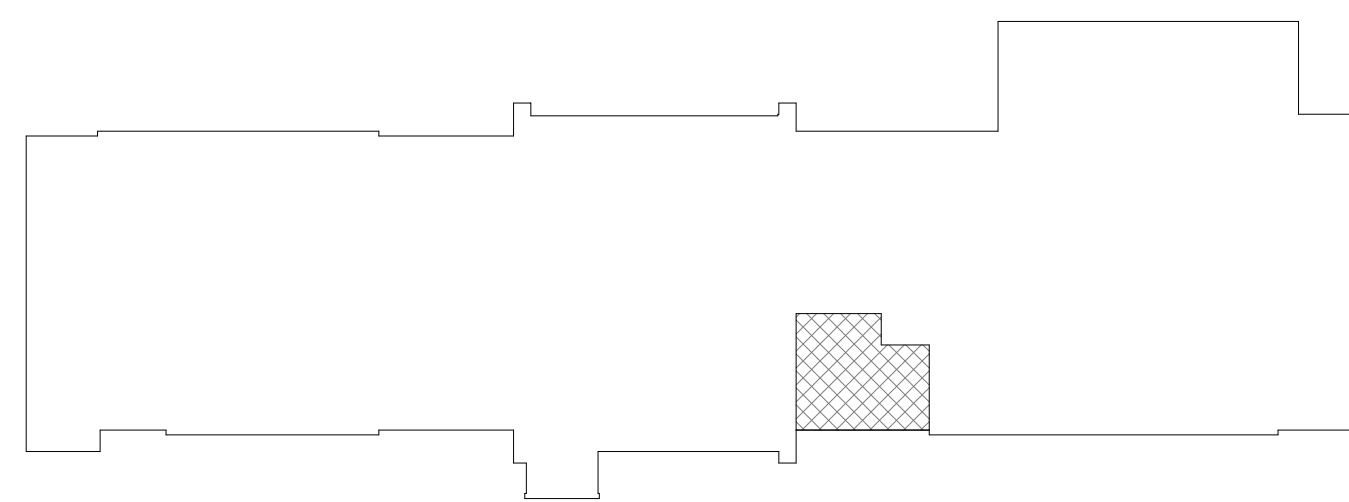
- BASE4 NOTES**
- REFER TO PLUMBING, MECHANICAL, ELECTRICAL FOR LOCATIONS OF RELATED ITEMS.
  - COORDINATE WITH HVAC AND ELECTRICAL PLANS FOR LOCATIONS/QUANTITIES/TYPES OF DIFFUSERS AND LIGHTS.
  - REFER TO ROOM FINISH SCHEDULES FOR CEILING MATERIALS AND HEIGHTS.
  - CEILING CONTROL JOINTS TO BE 50" O.C. MAX. EITHER DIRECTION OR TO LIMIT AREAS TO 2500 SF.
  - REFER TO CEILING DETAILS FOR FURTHER INFORMATION.
  - ALL ACT TILE CENTERED IN ROOM.
  - USE 9/16TH GRID ON SUSPENDED GRID SYSTEM.
  - ALL DIMENSIONS ARE TAKEN FROM FINISHES UNLESS OTHERWISE NOTED.

#### CEILING FINISH LEGEND

- CEILING FINISH LEGEND**
- A PRIME & PAINTED GYPSUM BOARD  
A1 PRIME & PAINTED GYPSUM BOARD (2-1/4")  
B PRIME & PAINTED GYPSUM BOARD- MOISTURE RESISTANT  
B1 PRIME & PAINTED GYPSUM BOARD- MOISTURE RESISTANT (2-1/4")  
C 2x2 LAY-IN ACOUSTICAL CLG. TILE SUSPENDED FROM STRUCT.  
C1 2x2 LAY-IN ACOUSTICAL CLG. TILE SUSPENDED FROM STRUCT. (2-1/4")  
D 2x4 LAY-IN ACOUSTICAL CLG. TILE SUSPENDED FROM STRUCT.  
E PAINTED CEILING  
F WOODEN FRAME CEILING

#### PROJECT NOTES

- GENERAL**
- SEE SHEET G-014 FOR TYPICAL MOUNTING HEIGHTS.
  - SEE ARCHITECTURAL MANUAL FOR FINISHES, MATERIAL AND BUILDING AND BATHROOM ACCESSORY SPECIFICATIONS.
  - PAIN MAY BE SUBSTITUTED FOR WALL COVERING SEE SPECIFICATIONS.
  - SEE ELECTRICAL DRAWINGS FOR ADDITIONAL HEARING IMPAIRED ROOM DEVICES.
  - PROVIDE SACKING AND BLOCKING FOR EQUIPMENT AND FURNITURE AS REQUIRED BY MANUFACTURER.
  - REFER TO SHEET G-005 & A-200 FOR SYMBOLS, NOTES, LEGENDS AND ABBREVIATIONS.



9 KEY PLAN- MEETING ROOM  
A-309 1" = 40'-0"

CURRENT ISSUE

**ISSUED FOR PERMIT**

CURRENT ISSUE DATE

2020.02.21

DRAWN BY

AK/RA

CHECKED BY

JGC/NBL

PROJECT NO.

B4-184-1901

SHEET NAME

**ENLARGED  
MEETING ROOM  
PLANS AND  
ELEVATIONS**

DRAWINGS NO.

**A-309**