

# AT A GLANCE:

## Camp Murray

Max Occ. 20  
288 sq. ft.

## JBLM

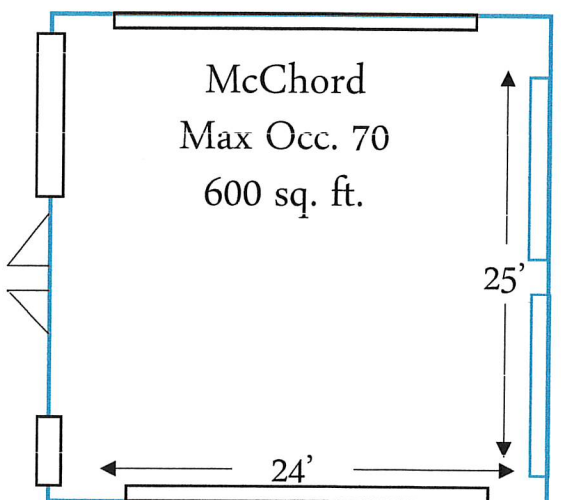
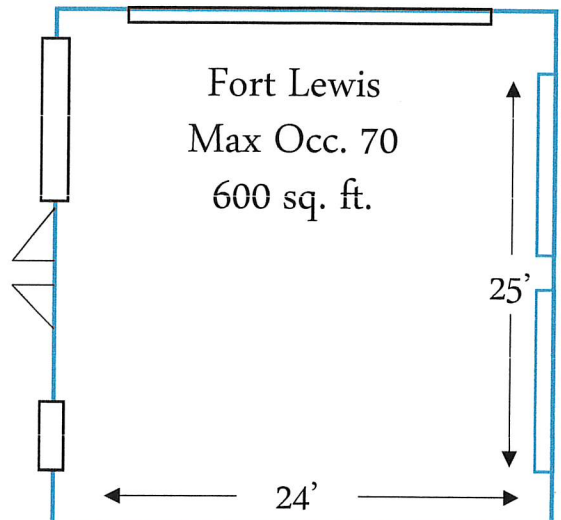
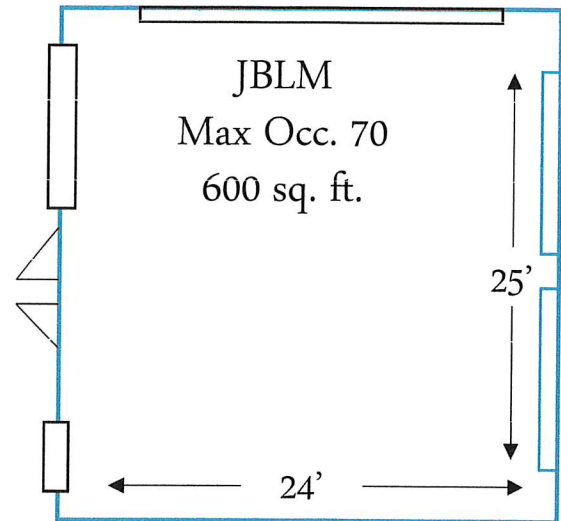
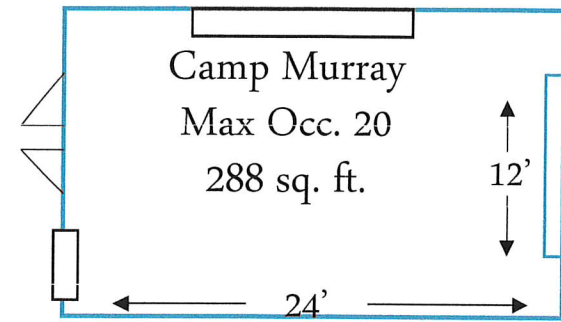
Max Occ. 70  
600 sq. ft.

## Fort Lewis

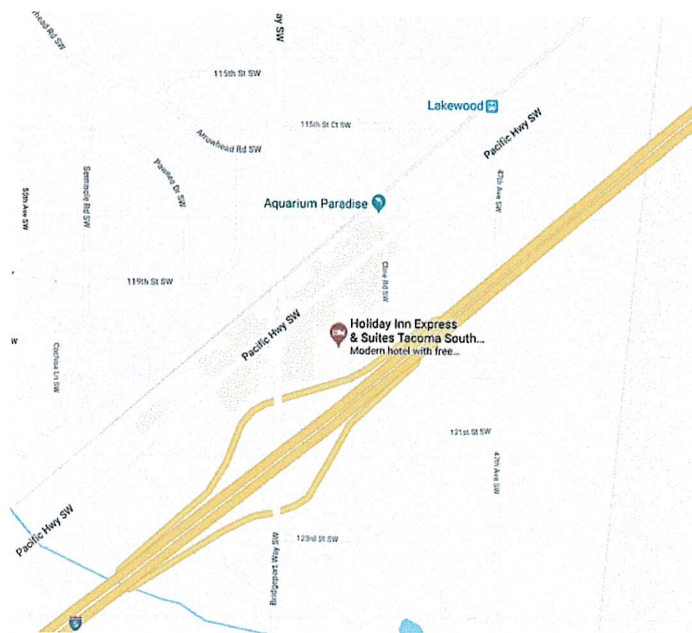
Max Occ. 70  
600 sq. ft.

## McChord

Max Occ. 70  
600 sq. ft.



- All conference rooms have 8 ½ foot ceilings, windows, natural light, and folding partitioned walls. They can form up to 4 breakout spaces or expand the room to accommodate up to 230 guests, providing up to 2,088 square feet of meeting space.
- Flexible setup options for any function, including but not limited to conference, theater, classroom, and banquet style. Complimentary tables, rounds, chairs, and linens can be provided.
- A/V equipment, projector, screen, LED signage, and electronic podiums are available upon request.
- Refreshments such as coffee, bottled beverages, pastries, and confections are available upon request. \*Full catering options offered through Picasso Catering.
- Additional costs may vary.



Tacoma-South Lakewood  
11751 Pacific Hwy SW  
Sales: 253-582-7000 ext. 172  
Fax: 253-584-7001

Total Meeting Space Available: 2,088 square feet