

Meeting Capacity

Lyons Boardroom

288 square feet
12'x24'
8-foot ceiling
Conference Table for 8

Tarmac / Landing

500 square feet
21'x26'
8-foot ceiling
Classroom: 24
Hollow Square: 28
U-shaped: 24
Rounds: 40
Rounds 3/4 set: 28
Theatre: 50
Conference: 28

*NO DANCE FLOOR

Lounge

Aviators Sports Pub
100 ppl

Restaurant
132 ppl

Poolside Reception
120 ppl

Ballroom

2,760 square feet
60'x46'

14-foot ceiling

Classroom: 135
Hollow Square: 70
U-shaped: 70
Rounds: 180-200
Rounds 3/4 set: 150
Rounds/DanceFloor: 140
Theatre: 250
Conference: 66

Ballroom - 2 sections

1,840 square feet
40'x46'

14-foot ceiling

Classroom: 80
Hollow Square: 50
U-shaped: 50
Rounds: 80-90
Rounds 3/4 set: 104
Rounds/DanceFloor: 70
Theatre: 175
Conference: 48

Ballroom - 1 section

920 square feet
20'x46'

14-foot ceiling

Classroom: 30-40
Hollow Square: 40
U-shaped: 36
Rounds: 40
Rounds 3/4 set: 40
Theatre: 70-90
Conference: 40

Foyer Area: 8'x60'

Doors in Ballroom 70.5"W x 79"H



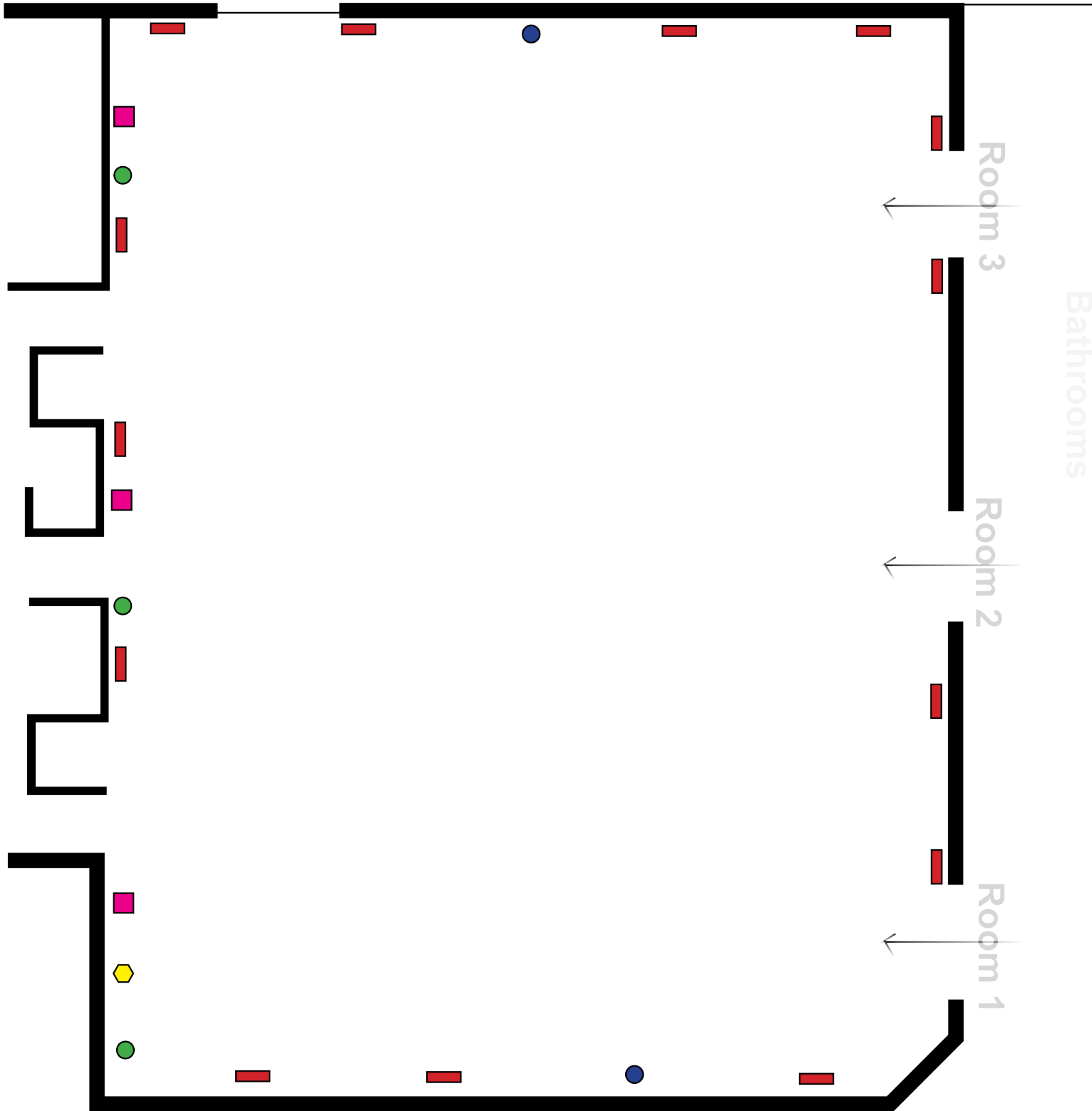
Holiday Inn[®]

St. Petersburg-Clearwater
International Airport ✈

“Concourse Ballroom” | Sections 1,2,3 Main Floor to right of lobby

1/100th scale

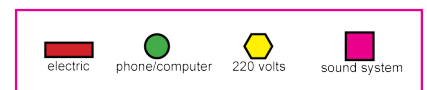
outside entrance

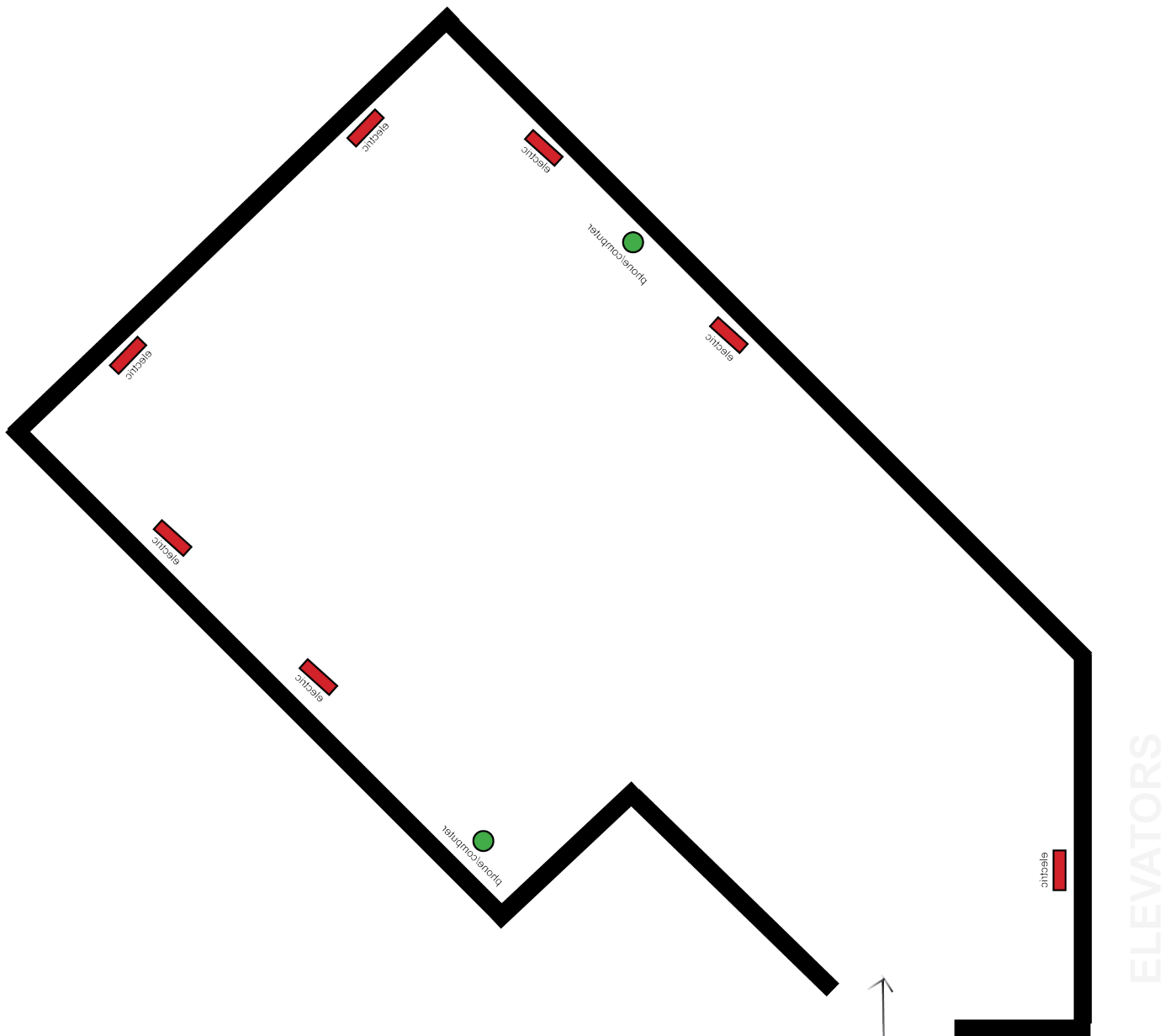


20'x46' = 1 section
920 square feet

40'x46' = 2 sections
1,840 square feet

60'x46' = 3 sections
2,760 square feet





Meeting Room Capacity

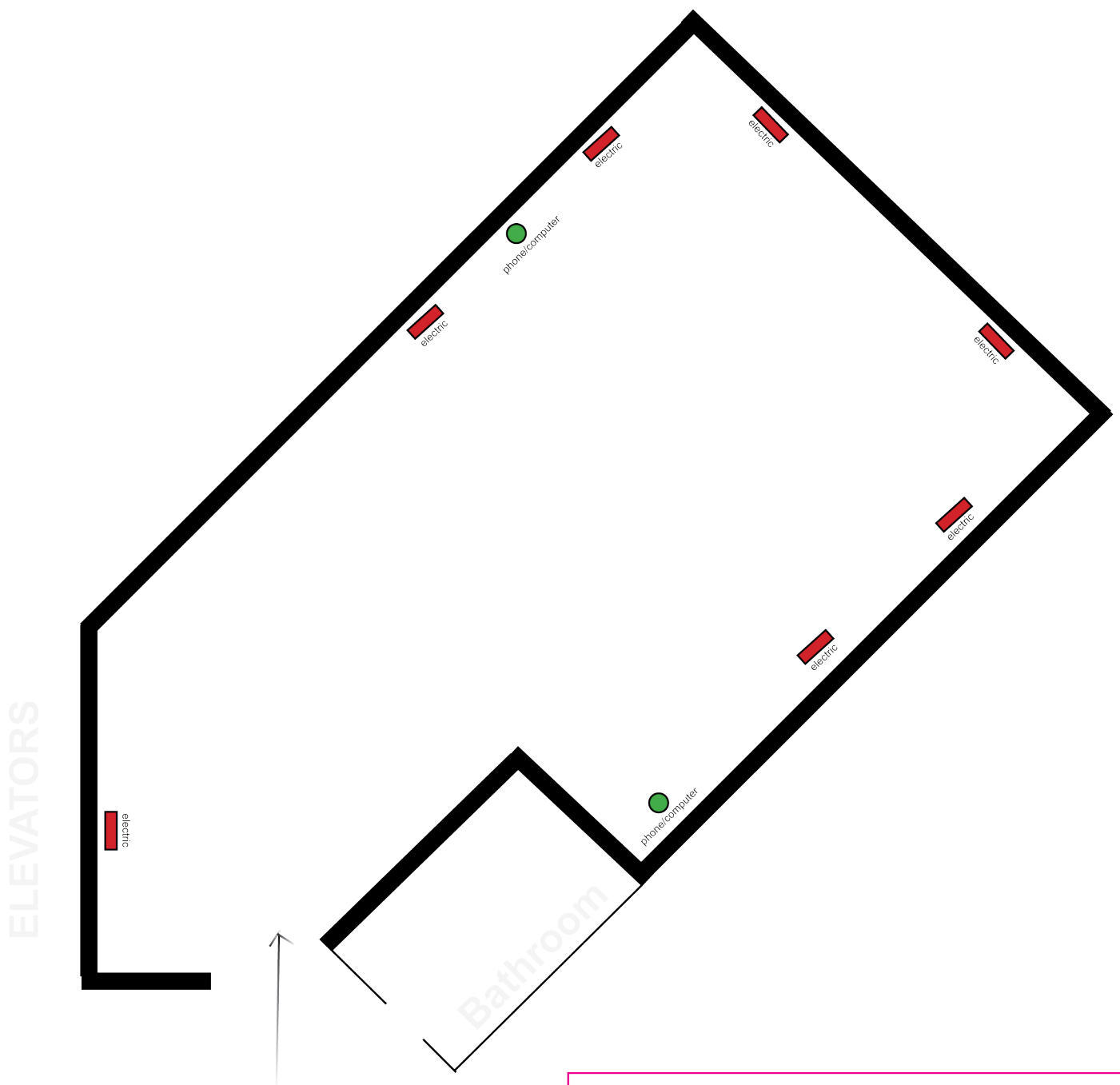
500 square feet | 21'x26' | 8' ceiling

Classroom:	24
Hollow Square:	28
U-Shaped:	24
Rounds:	40
Rounds 3/4 set:	28
Theatre:	50
Conference:	28



Holiday Inn

St. Petersburg-Clearwater
International Airport 



Meeting Room Capacity

500 square feet | 21'x26' | 8' ceiling

Classroom:	24
Hollow Square:	28
U-Shaped:	24
Rounds:	40
Rounds 3/4 set:	28
Theatre:	50
Conference:	28