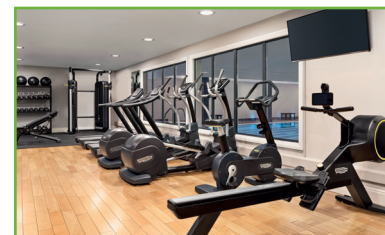
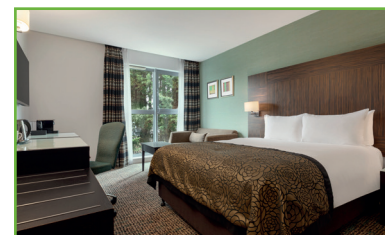
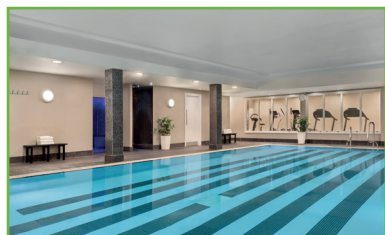


Fact Sheet

Holiday Inn Birmingham Airport NEC

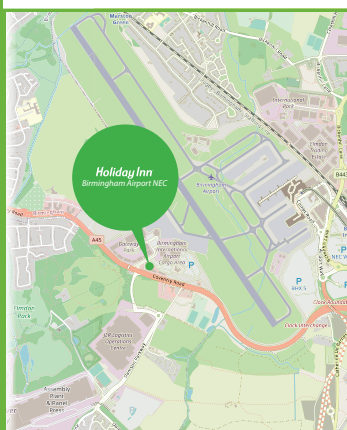


Facilities

- 241 Bedrooms, including Executive Rooms, 8 Suites & 6 Accessible rooms
- A large, spacious Open Lobby complete with a relaxing External Terrace
- Contemporary Open Lobby Bar and Restaurant, with an on-site Starbucks
- 24 Hour In - Room Dining
- Aspire Conference Centre, 14 Meeting Rooms, Maximum Capacity 600 Theatre Style
- Inspire Leisure Centre complete with fully equipped gym, Swimming Pool, Steam room & Jacuzzi
- Onsite Car Parking (chargeable)

About us

- 2 Miles from NEC, Resorts World Arena, Resorts World, Birmingham International Airport
- Complimentary Shuttle Bus service from Birmingham International Train Station
- 5 Minutes from M42 and M6
- 6 Miles from Birmingham City Centre



How to find us

- From M42 - Exit the motorway at J6, follow A45/Birmingham for approximately 1 mile.
- The hotel is located on the right hand side, at the first set of traffic lights.
- From Train Station – complimentary Shuttle Bus Service picks you up at taxi rank.
- If arriving from airport take the monorail to the main station.

www.hairport.co.uk | reservations@hairport.co.uk | +44 (0) 871 663 9007

Follow us on social media for news and offers: [Facebook](#) Holiday Inn Birmingham Airport | [Twitter](#) @HIBhamAirHotel



Check in time
2.00pm

Check out time
12.00 noon

- Complimentary high speed Wi-Fi throughout
- Leisure facilities open from 6.00am to 10.00pm, Free for all resident guests



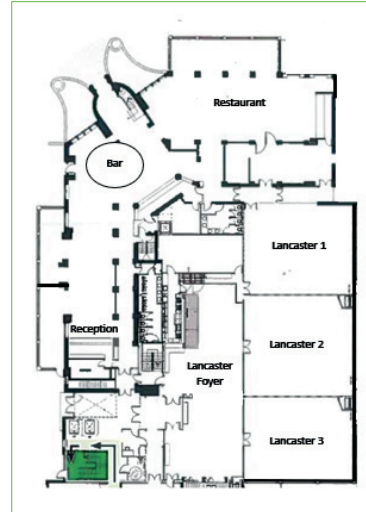
Conference rooms

At Holiday Inn Birmingham Airport NEC we offer fantastic package deals from room hire only to all inclusive.

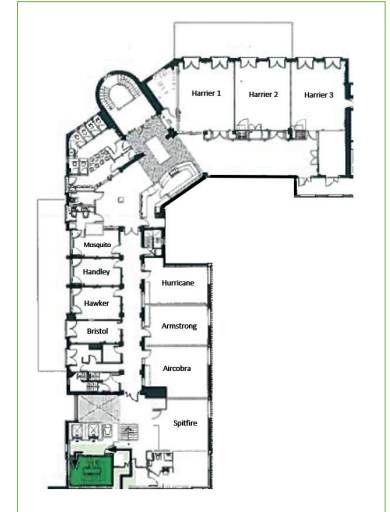
Our Aspire Conference Centre has 14 meeting rooms which can host up to 2200 people, with free wifi. The Lancaster Suite has a private entrance and bar and can cater for up to 600 guests.

Our dedicated Sales Team will always be on hand to help you throughout your booking and our experienced operational team will tend to your every event need.

Ground Floor



First Floor



Room Name	Theatre	Boardroom	U-Shape	Classroom	Banquet with Dancefloor	Banquet	Cabaret	Dimensions
Lancaster Suite	600	-	-	240	400	450	240	32.1x12.8x3.3
Lancaster 1	80	22	22	36	50	100	40	10.4x12.8x3.3
Lancaster 2	170	30	35	60	80	100	60	11.8x12.8x3.3
Lancaster 3	170	30	35	60	80	100	60	9.7x12.8x3.3
Lancaster1&2	300	60	60	120	200	240	120	22.2x12.8x3.3
Lancaster2&3	400	60	60	120	200	240	120	21.5x12x3.3
Harrier Suite	150	50	58	60	90	100	60	18.6x7.7x2.4
Harrier 1	35	20	22	24	-	-	20	6.2x7.7x2.4
Harrier 2	35	20	22	24	-	-	20	6.2x7.7x2.4
Harrier 3	35	20	22	24	-	-	20	6.2x7.7x2.4
Harrier 1&2	60	30	34	48	-	-	40	12.4x7.7x2.4
Harrier 2&3	60	30	34	48	-	-	40	12.4x7.7x2.4
Mosquito	8	4	-	-	-	-	-	5.1x2.9x2.5
Handley Page	14	10	-	-	-	-	-	5.1x2.9x2.5
Hawker Tempest	14	10	-	-	-	-	-	5.1x2.9x2.5
Bristol Beaufighter	14	10	-	-	-	-	-	5.1x3.6x2.5
Spitfire	-	15	-	-	-	-	-	6.6x4.3x2.5
Air Acobra	25	16	14	12	-	-	16	6.6x4.4x2.5
Armstrong Whitley	25	16	14	18	-	-	16	7.4x4.3x2.5
Hurricane	25	16	14	18	--	-	16	7.4x5.0x2.5

Holiday Inn Birmingham Airport NEC

Coventry Road, Birmingham, B26 3QW

T: +44 (0) 871 663 9007 | F: +44 (0) 121 780 6707

E: conference@hiairport.co.uk | www.hiairport.co.uk

