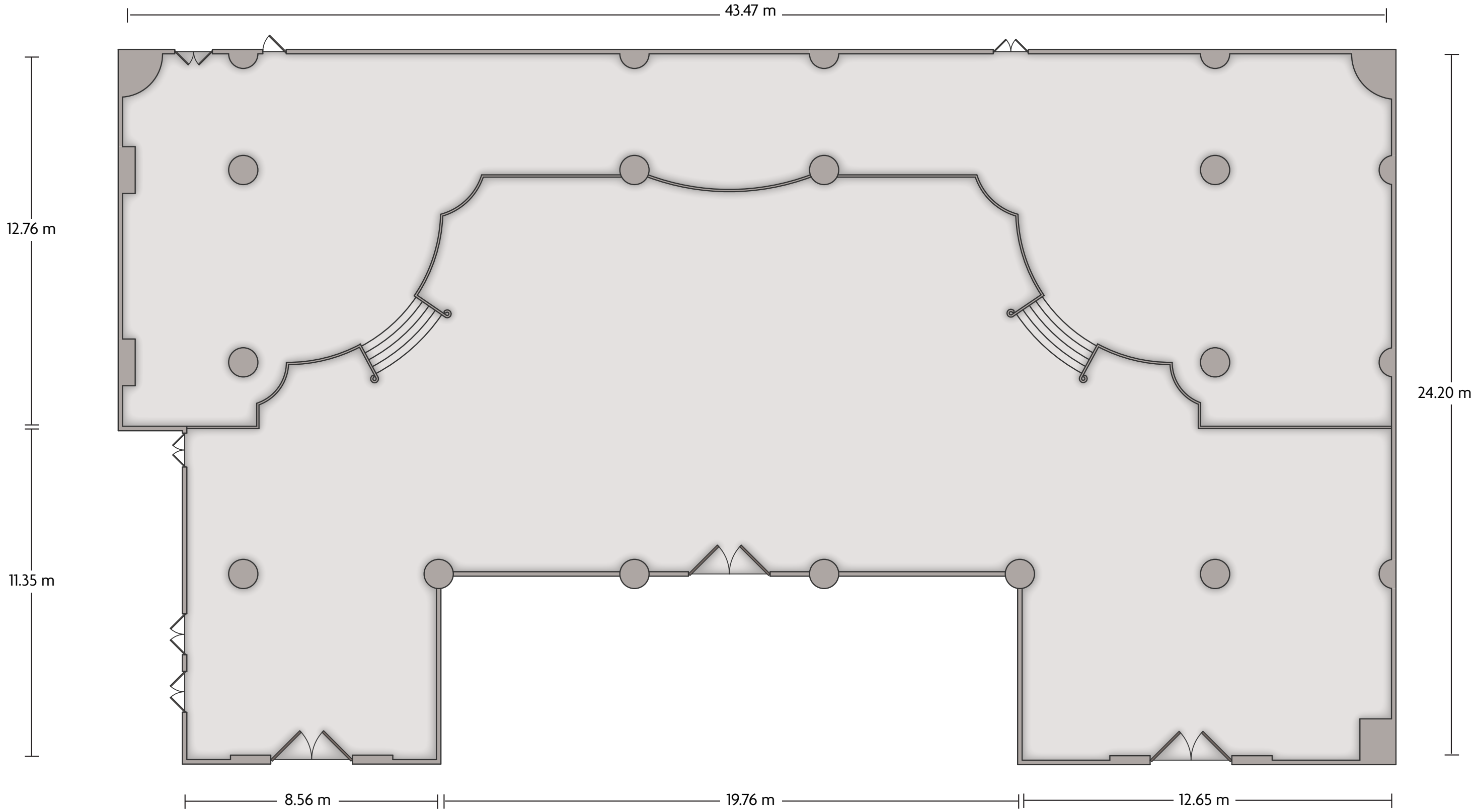


Crowne Plaza® Landmark Shenzhen

Atrium



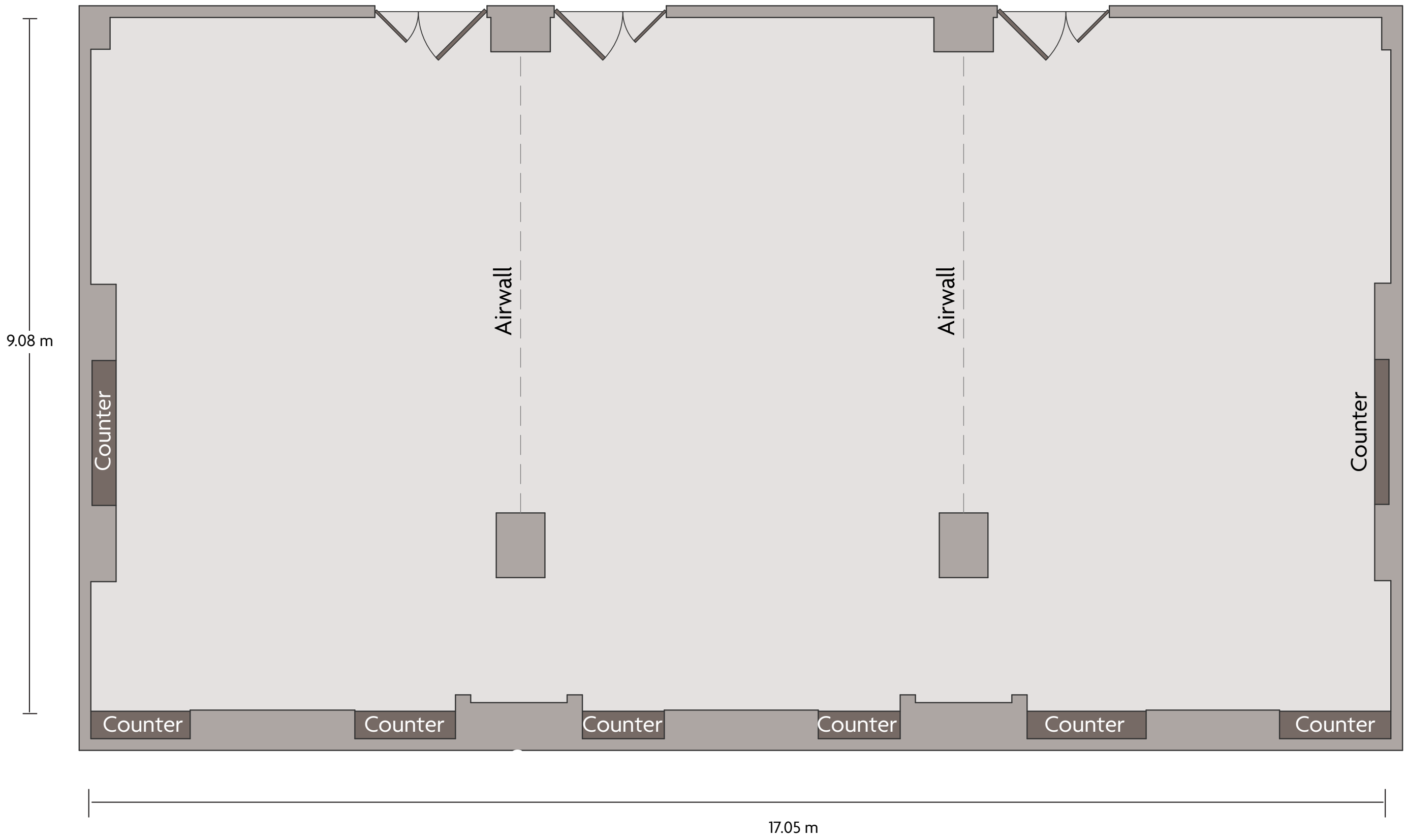
LENGTH: 43.47 m WIDTH: 24.20 m HEIGHT: 16.40 m TOTAL SQUARE METERS: 883.93 m² MAXIMUM CAPACITY: 600 POWER OUTLETS: 39

3018 Nanhu Rd. | Shenzhen, Guangdong - 518001 China (People's Republic) | 86.755.82172288

*Multiple layout options available for this space.

Crowne Plaza® Landmark Shenzhen

Azalea Ballroom



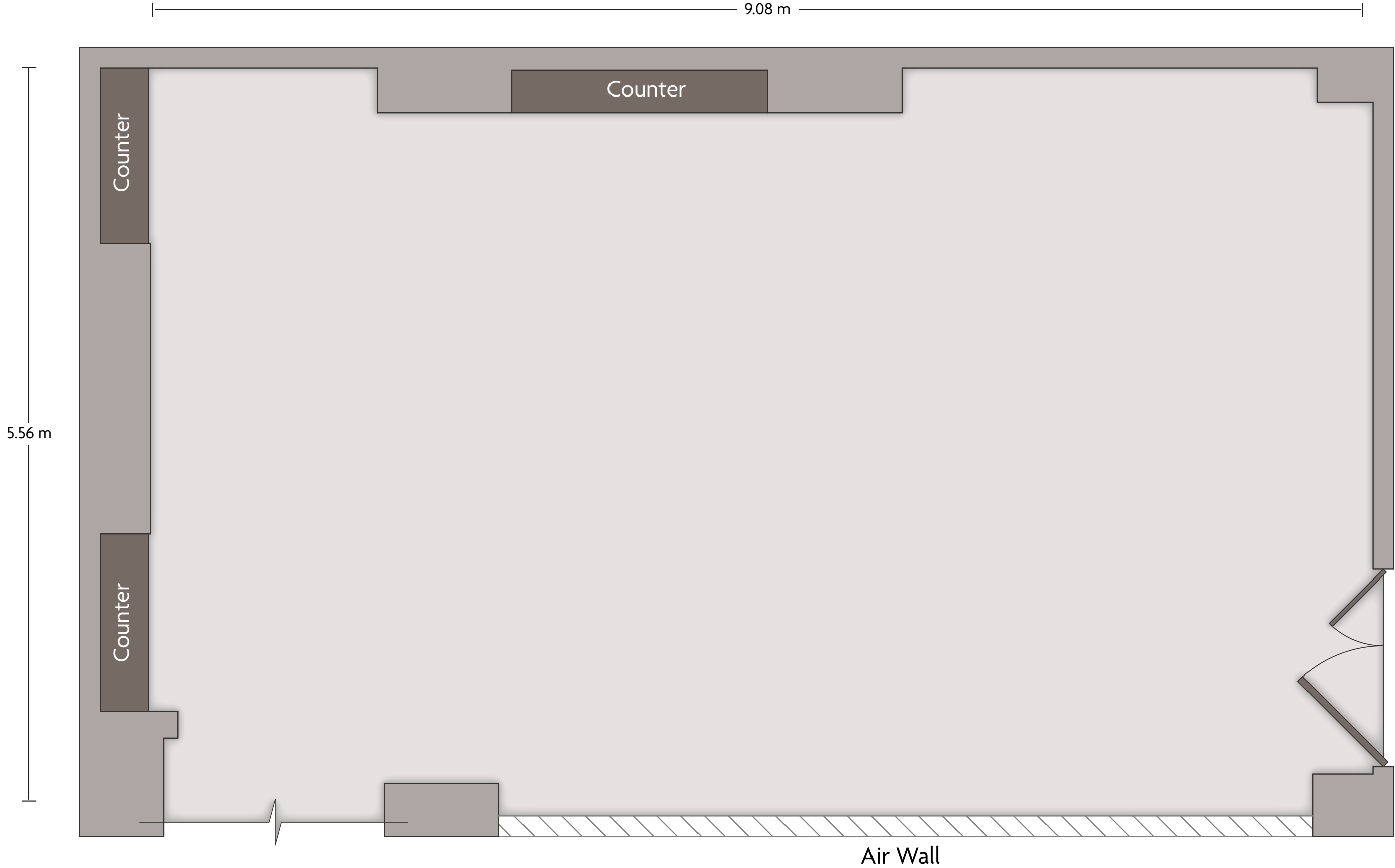
LENGTH: 17.05 m WIDTH: 9.08 m HEIGHT: 3.19 m TOTAL SQUARE METERS: 152.07 m² MAXIMUM CAPACITY: 130 POWER OUTLETS: 15

3018 Nanhu Rd. | Shenzhen, Guangdong - 518001 China (People's Republic) | 86.755.82172288

*Multiple layout options available for this space.

Crowne Plaza® Landmark Shenzhen

Azalea I



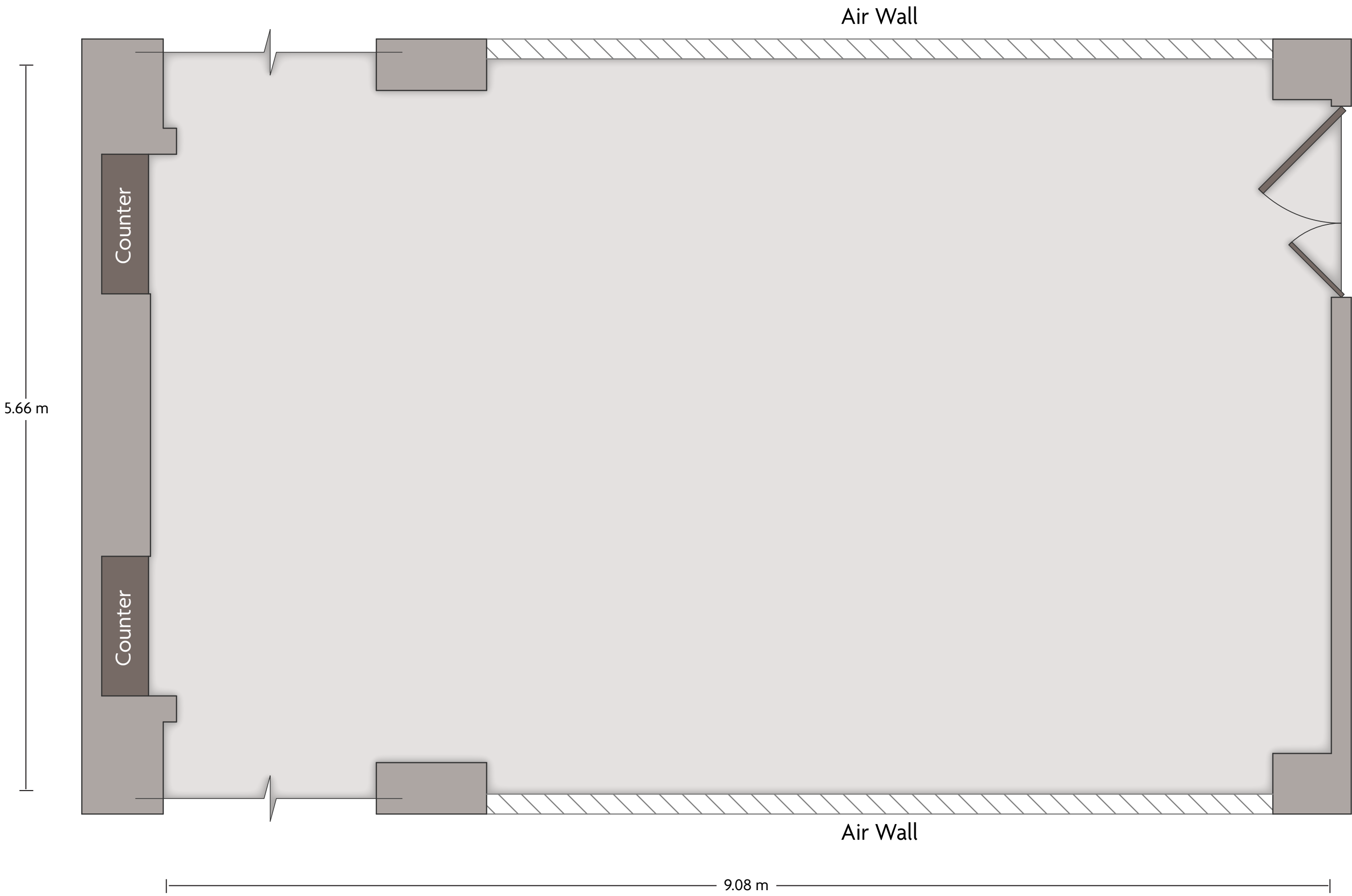
LENGTH: 9.08 m WIDTH: 5.56 m HEIGHT: 3.19 m TOTAL SQUARE METERS: 48.96 m² MAXIMUM CAPACITY: 50 POWER OUTLETS: 5

3018 Nanhu Rd. I Shenzhen, Guangdong - 518001 China (People's Republic) | 86.755.82172288

*Multiple layout options available for this space.

Crowne Plaza® Landmark Shenzhen

Azalea II

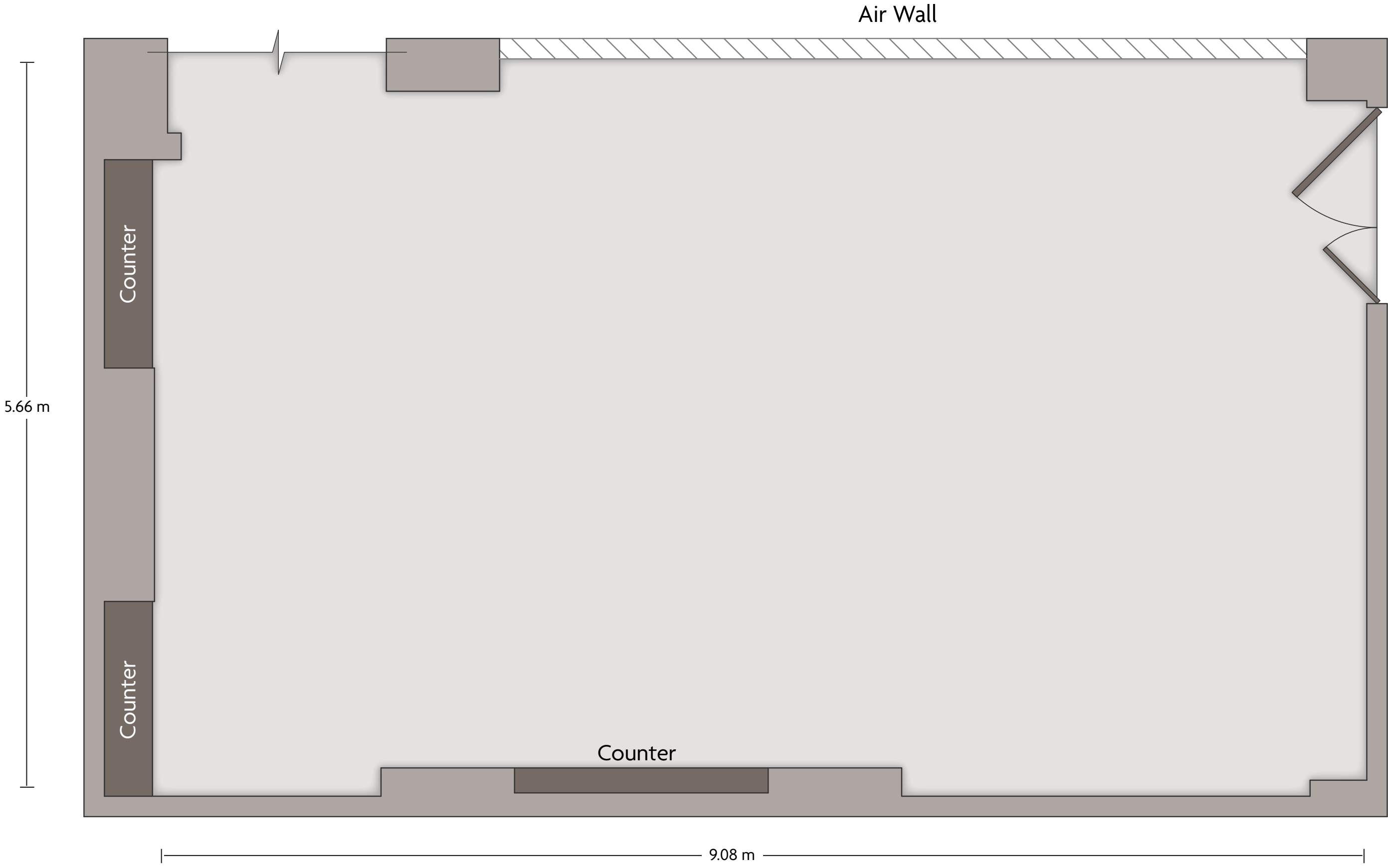


LENGTH: 9.08 m WIDTH: 5.66 m HEIGHT: 3.19 m TOTAL SQUARE METERS: 50.41 m² MAXIMUM CAPACITY: 50 POWER OUTLETS: 5

3018 Nanhu Rd. | Shenzhen, Guangdong - 518001 China (People's Republic) | 86.755.82172288

*Multiple layout options available for this space.

Crowne Plaza® Landmark Shenzhen
Azalea III

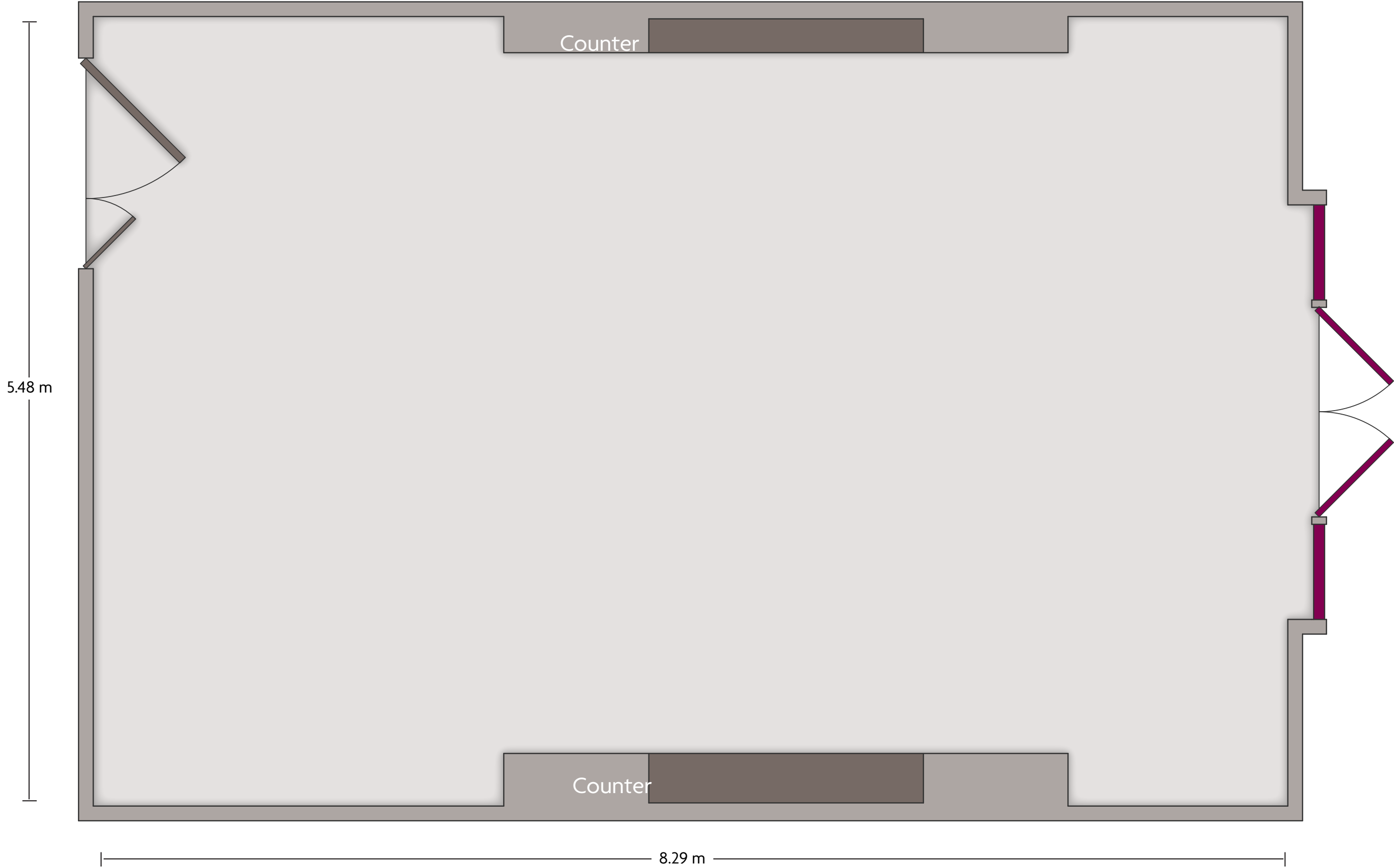


LENGTH: 9.08 m WIDTH: 5.66 m HEIGHT: 3.19 m TOTAL SQUARE METERS: 49.18 m² MAXIMUM CAPACITY: 50 POWER OUTLETS: 5

3018 Nanhu Rd. | Shenzhen, Guangdong - 518001 China (People's Republic) | 86.755.82172288

*Multiple layout options available for this space.

Crowne Plaza® Landmark Shenzhen
Bauhinia



LENGTH: 8.29 m WIDTH: 5.48 m HEIGHT: 3.80 m TOTAL SQUARE METERS: 43.50 m² MAXIMUM CAPACITY: 50 POWER OUTLETS: 6

3018 Nanhu Rd. | Shenzhen, Guangdong - 518001 China (People's Republic) | 86.755.82172288

*Multiple layout options available for this space.

Crowne Plaza® Landmark Shenzhen

Boardroom I



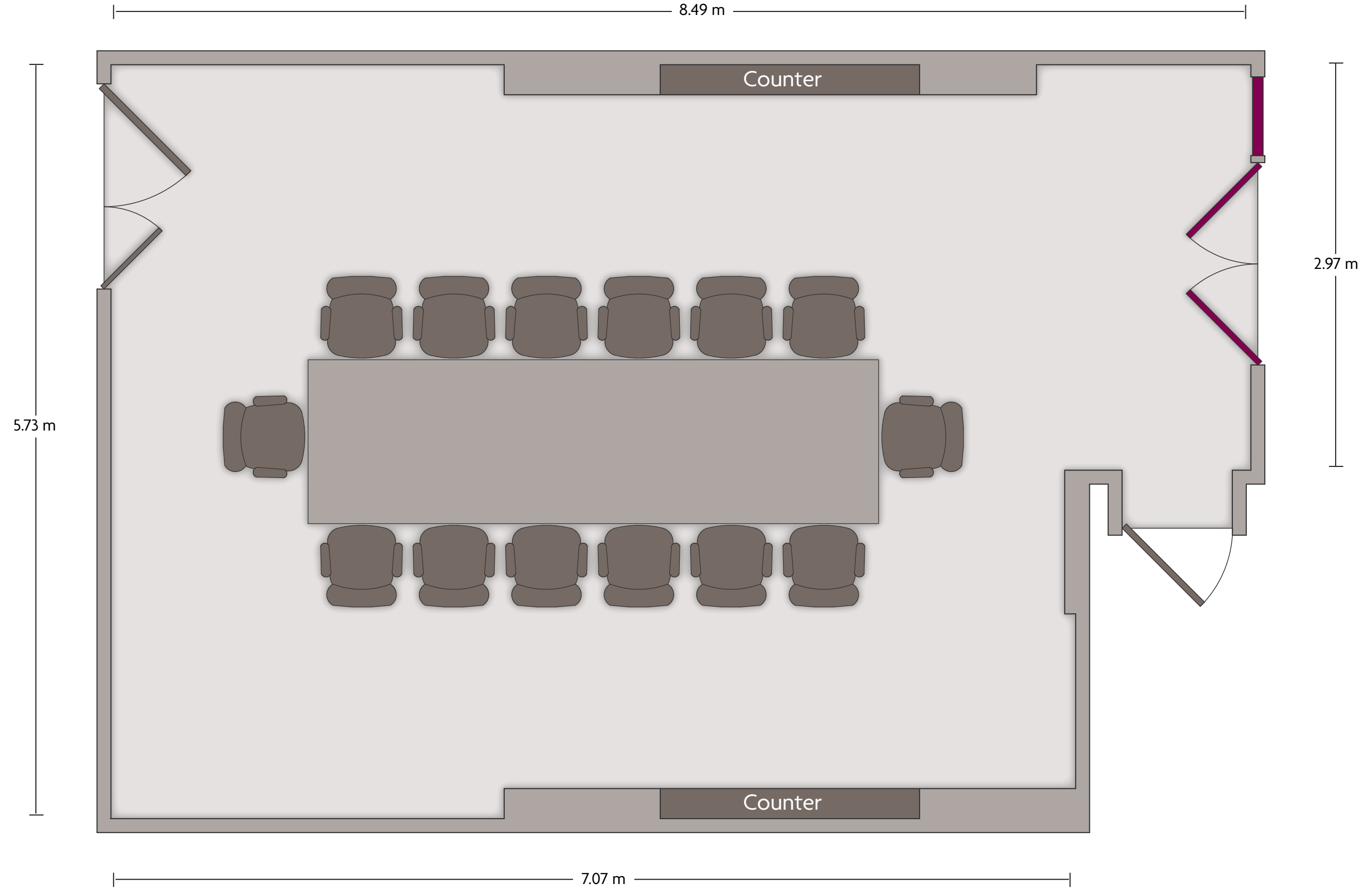
LENGTH: 8.35 m WIDTH: 5.41 m HEIGHT: 3.81 m TOTAL SQUARE METERS: 43.84 m² MAXIMUM CAPACITY: 50 POWER OUTLETS: 9

3018 Nanhu Rd. I Shenzhen, Guangdong - 518001 China (People's Republic) | 86.755.82172288

*Multiple layout options available for this space.

Crowne Plaza® Landmark Shenzhen

Boardroom II

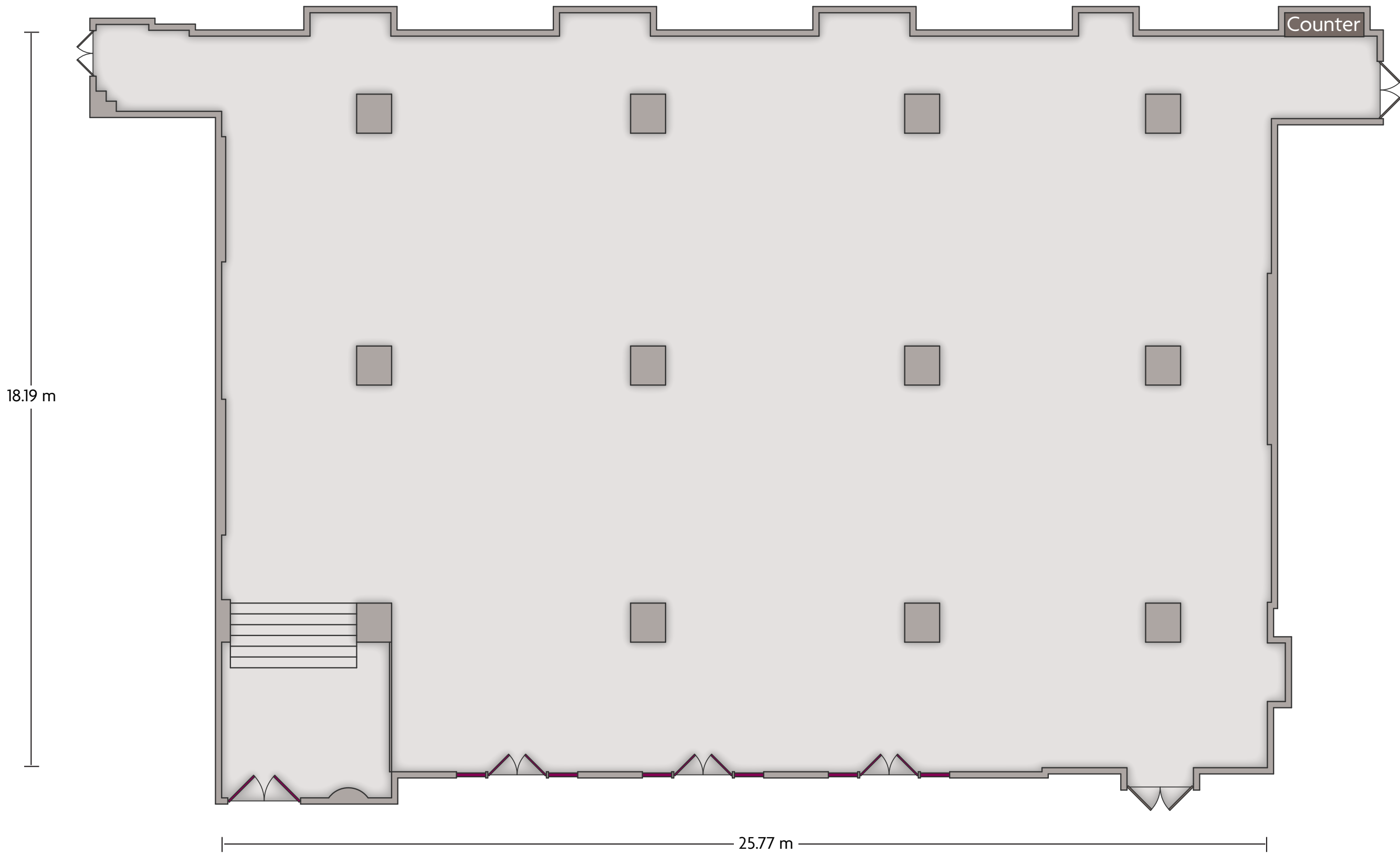


LENGTH: 8.49 m WIDTH: 5.73 m HEIGHT: 3.81 m TOTAL SQUARE METERS: 41.31 m² MAXIMUM CAPACITY: 12 POWER OUTLETS: 13

3018 Nanhu Rd. I Shenzhen, Guangdong - 518001 China (People's Republic) | 86.755.82172288

Crowne Plaza® Landmark Shenzhen

Grand Ballroom



LENGTH: 25.77 m WIDTH: 18.19 m HEIGHT: 3.75 m TOTAL SQUARE METERS: 468.47 m² MAXIMUM CAPACITY: 400 POWER OUTLETS: 30

3018 Nanhu Rd. | Shenzhen, Guangdong - 518001 China (People's Republic) | 86.755.82172288

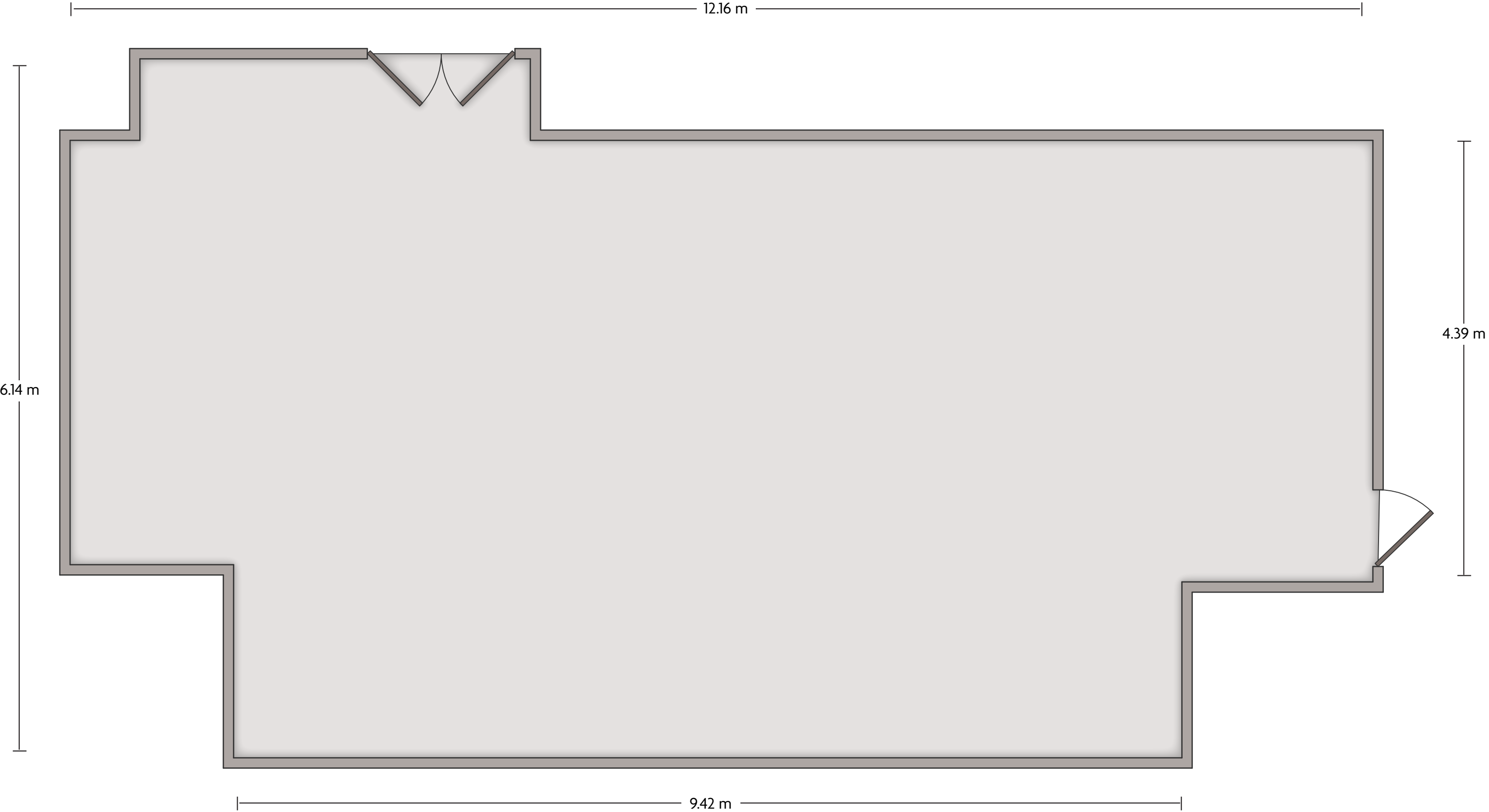
*Multiple layout options available for this space.

Crowne Plaza® Landmark Shenzhen

Lily



CROWNE PLAZA®
HOTEL & SUITES LANDMARK SHENZHEN



LENGTH: 12.16 m WIDTH: 6.14 m HEIGHT: 3.48 m TOTAL SQUARE METERS: 76.15 m² MAXIMUM CAPACITY: 100 POWER OUTLETS: 16

3018 Nanhu Rd. | Shenzhen, Guangdong - 518001 China (People's Republic) | 86.755.82172288

*Multiple layout options available for this space.

Crowne Plaza® Landmark Shenzhen

Peony



LENGTH: 9.59 m WIDTH: 5.71 m HEIGHT: 3.81 m TOTAL SQUARE METERS: 49.19 m² MAXIMUM CAPACITY: 50 POWER OUTLETS: 5

3018 Nanhu Rd. | Shenzhen, Guangdong - 518001 China (People's Republic) | 86.755.82172288

*Multiple layout options available for this space.