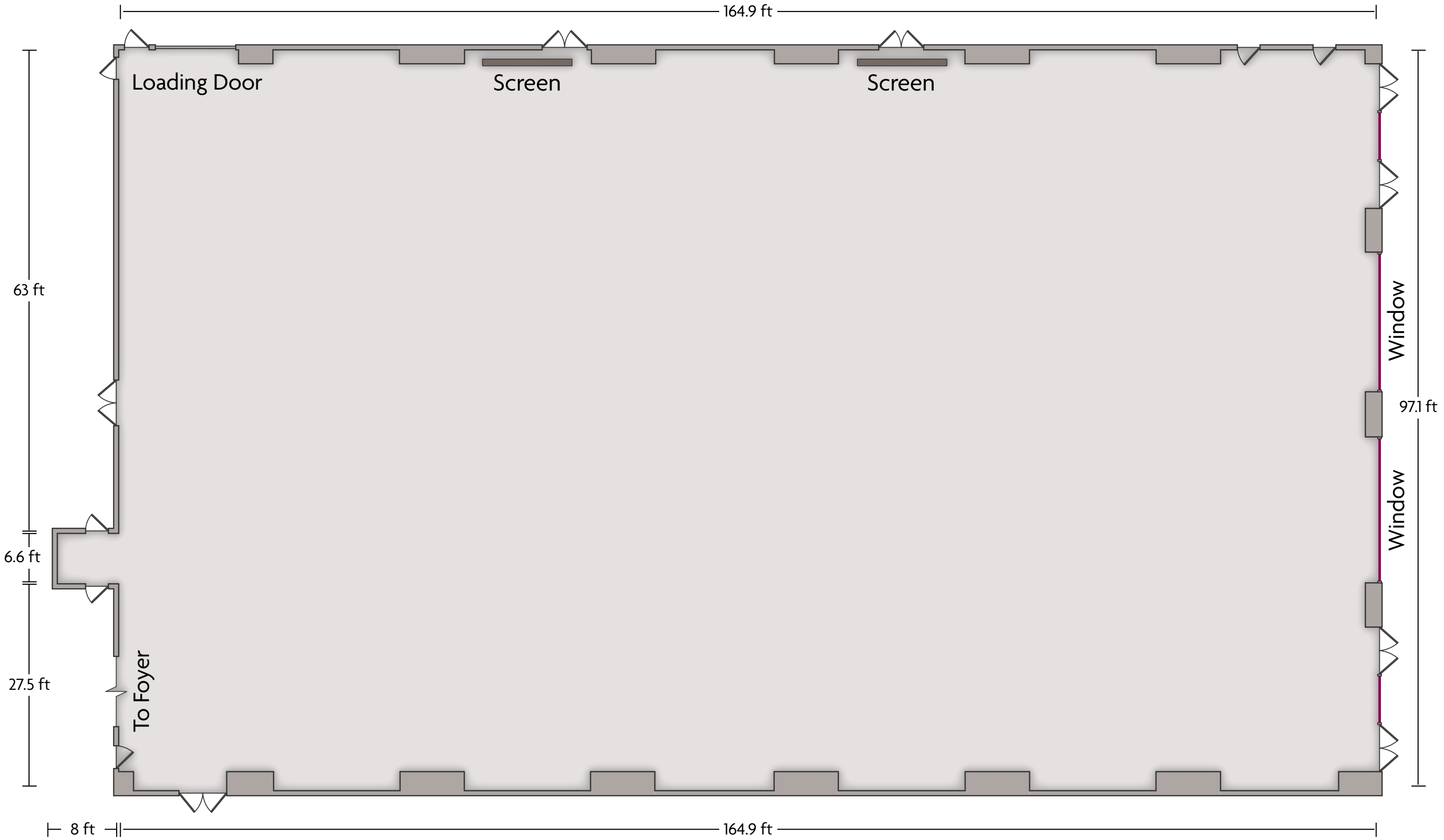
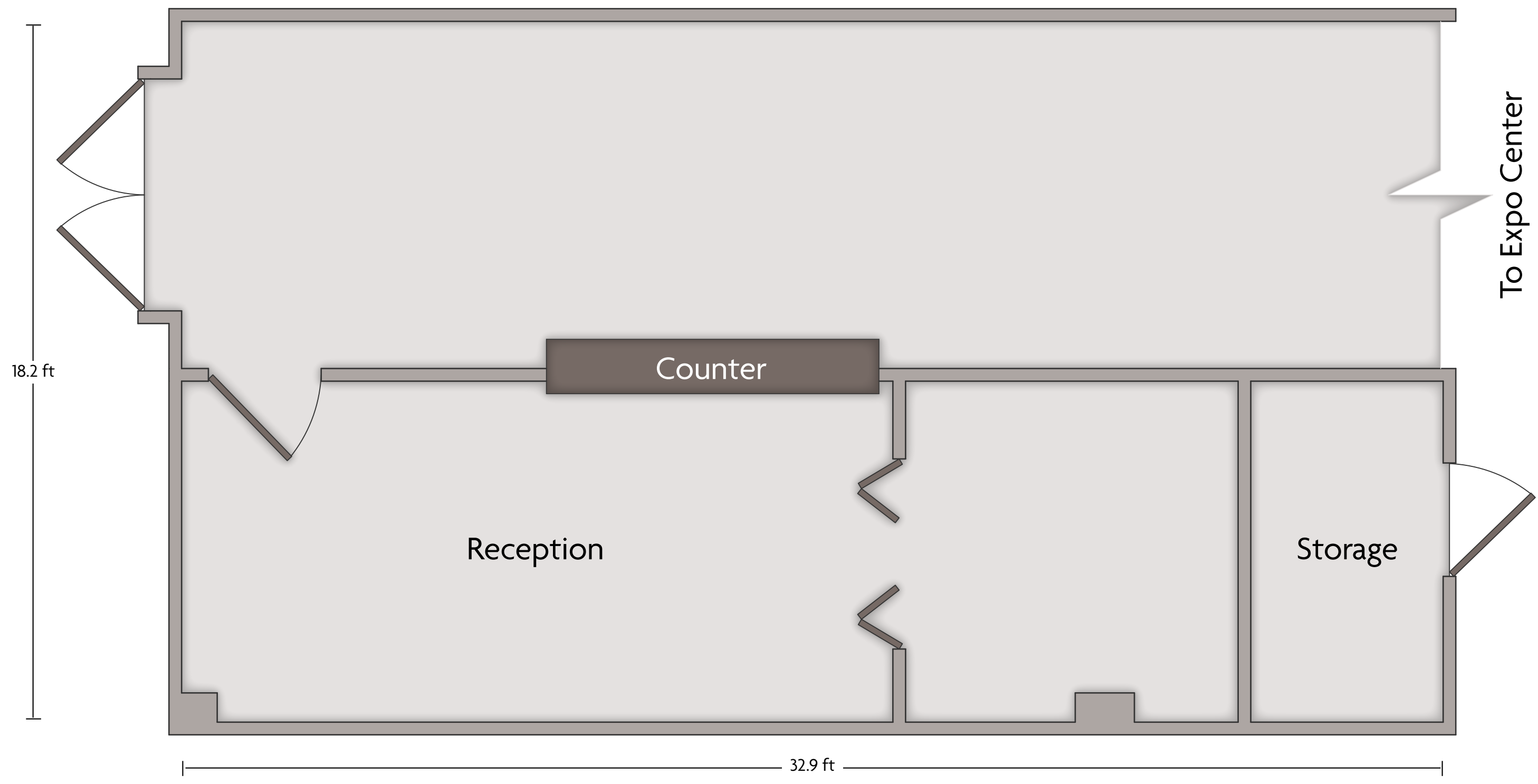


LENGTH: 36.2 Ft    WIDTH: 44.4 Ft    HEIGHT: 9.9 Ft    TOTAL SQUARE FEET: 1529.5 Sq Ft    MAXIMUM CAPACITY: 100    POWER OUTLETS: 11



LENGTH: 97.1 Ft    WIDTH: 164.9 Ft    HEIGHT: 16 Ft    TOTAL SQUARE FEET: 15821.8 Sq Ft    MAXIMUM CAPACITY: 1600    POWER OUTLETS: 47

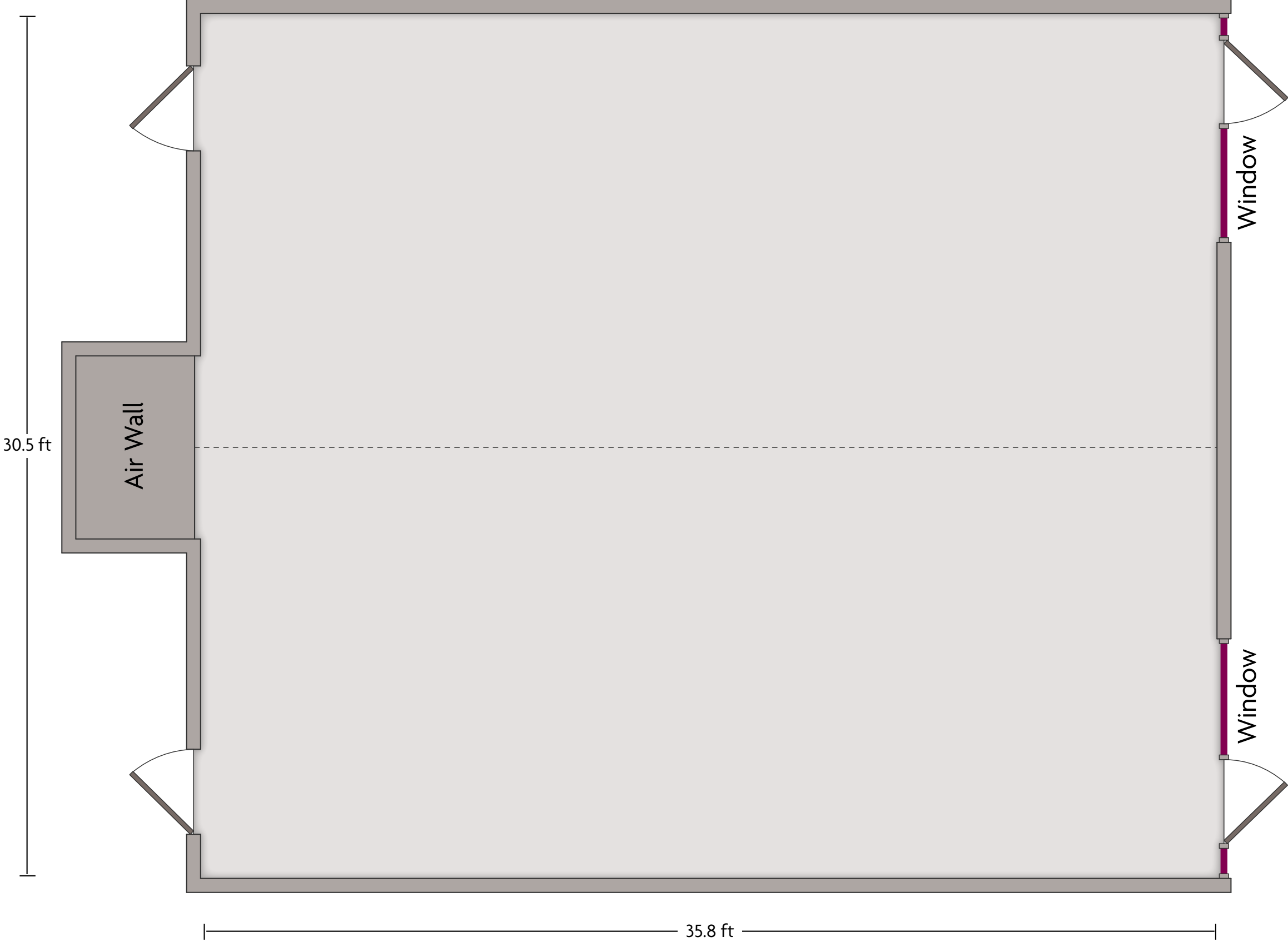
# Crowne Plaza® Asheville - Expo Center Foyer



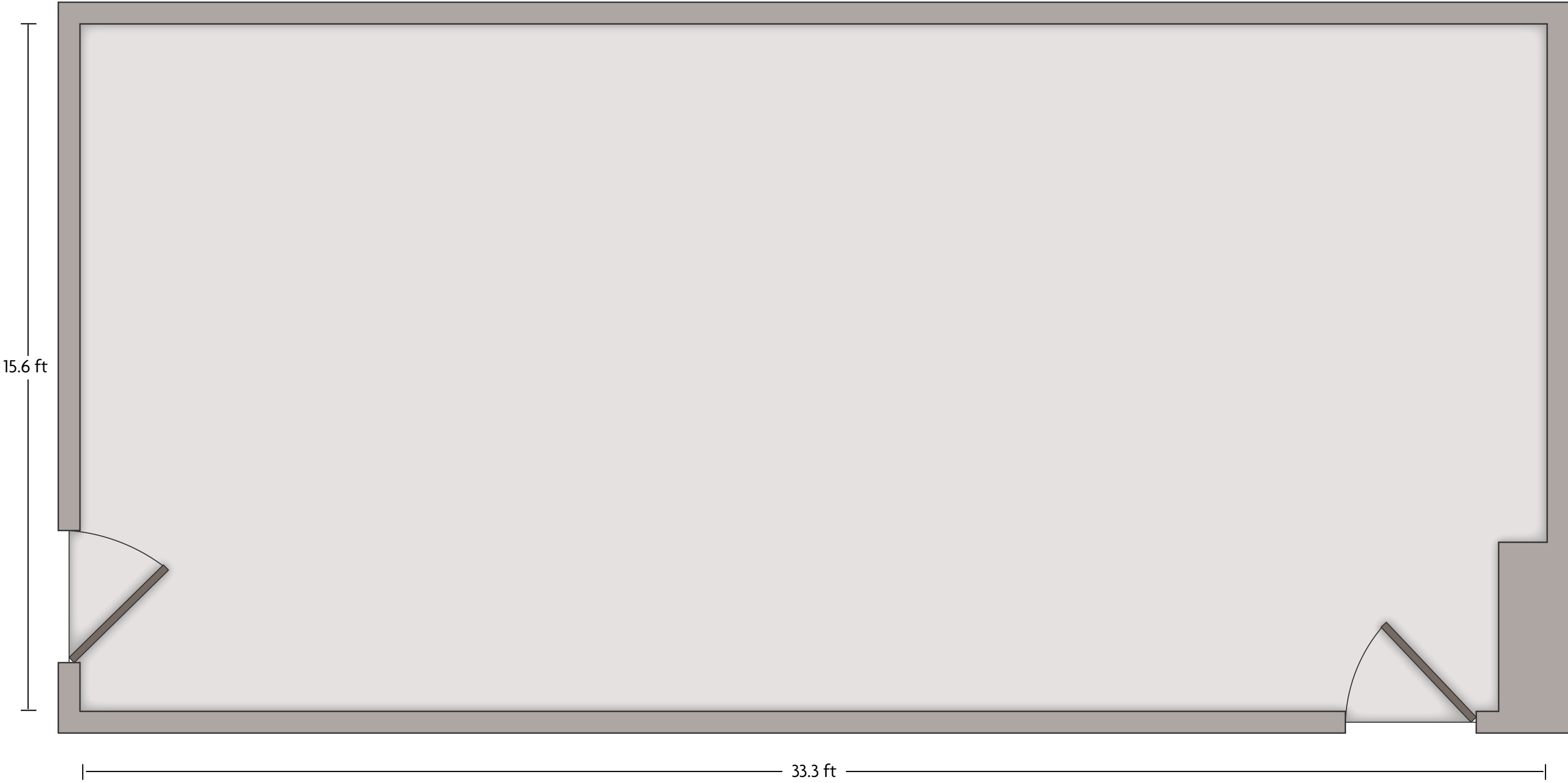
LENGTH: 9.2 Ft    WIDTH: 32.9 Ft    HEIGHT: 13 Ft    TOTAL SQUARE FEET: 303.5 Sq Ft    MAXIMUM CAPACITY: 30    POWER OUTLETS: 2

1 Resort Drive | Asheville, NC 28806 | 828.254.3211

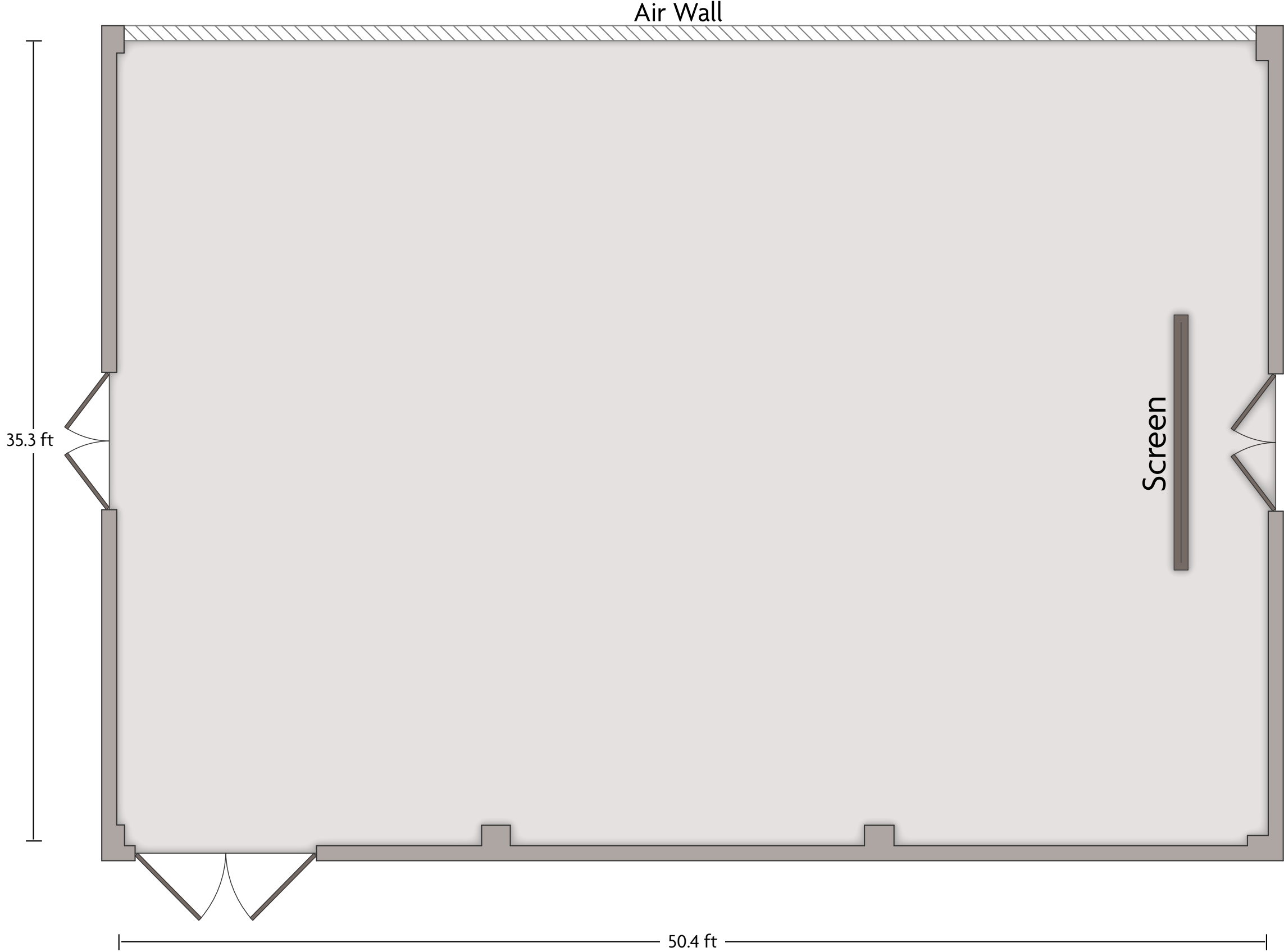
\*Multiple layout options available for this space.



LENGTH: 30.5 Ft    WIDTH: 35.8 Ft    HEIGHT: 10.1 Ft    TOTAL SQUARE FEET: 1092.3 Sq Ft    MAXIMUM CAPACITY: 80    POWER OUTLETS: 10



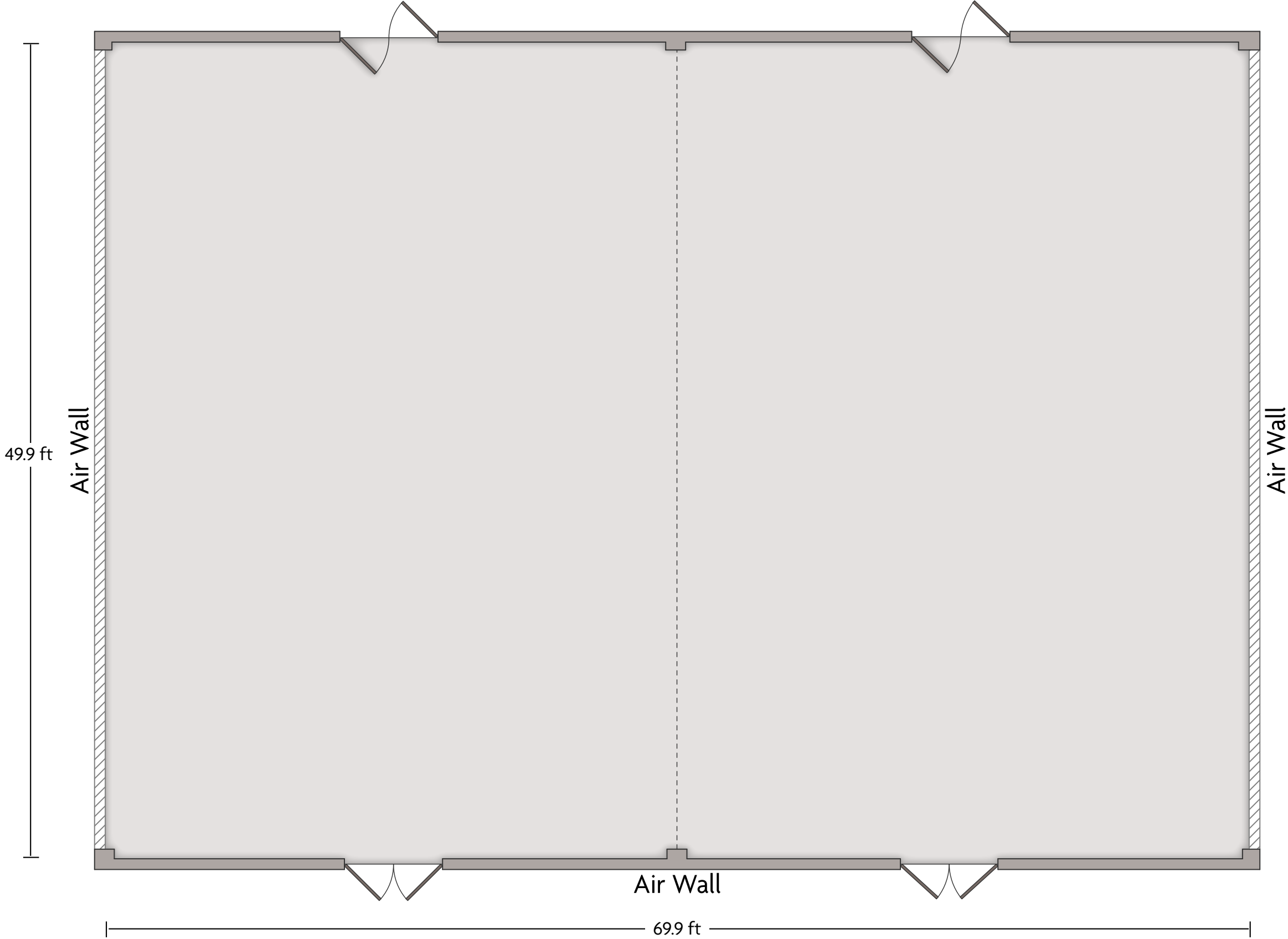
LENGTH: 15.6 Ft    WIDTH: 33.3 Ft    HEIGHT: 7.6 Ft    TOTAL SQUARE FEET: 514.2 Sq Ft    MAXIMUM CAPACITY: 35    POWER OUTLETS: 10



LENGTH: 35.3 Ft    WIDTH: 50.4 Ft    HEIGHT: 11 Ft    TOTAL SQUARE FEET: 1774.8 Sq Ft    MAXIMUM CAPACITY: 150    POWER OUTLETS: 6



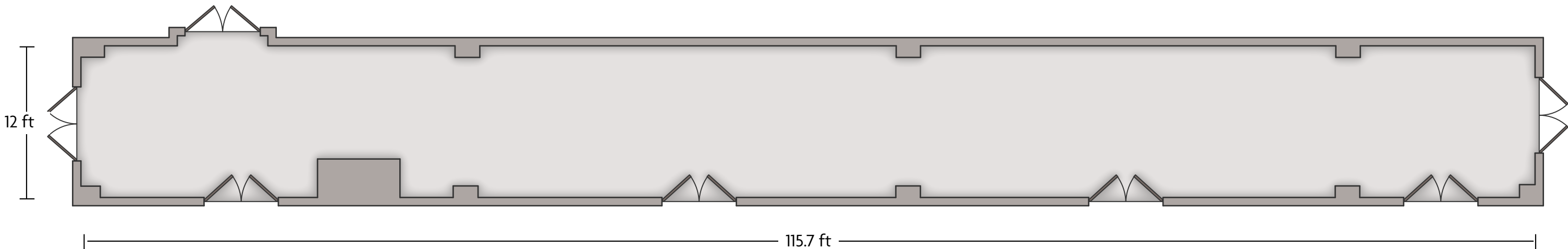
LENGTH: 34.7 Ft    WIDTH: 50.3 Ft    HEIGHT: 11 Ft    TOTAL SQUARE FEET: 1738.3 Sq Ft    MAXIMUM CAPACITY: 150    POWER OUTLETS: 4



LENGTH: 49.9 Ft    WIDTH: 69.9 Ft    HEIGHT: 14.3 Ft    TOTAL SQUARE FEET: 3490.9 Sq Ft    MAXIMUM CAPACITY: 300    POWER OUTLETS: 8



# Crowne Plaza® Asheville - Biltmore Foyer

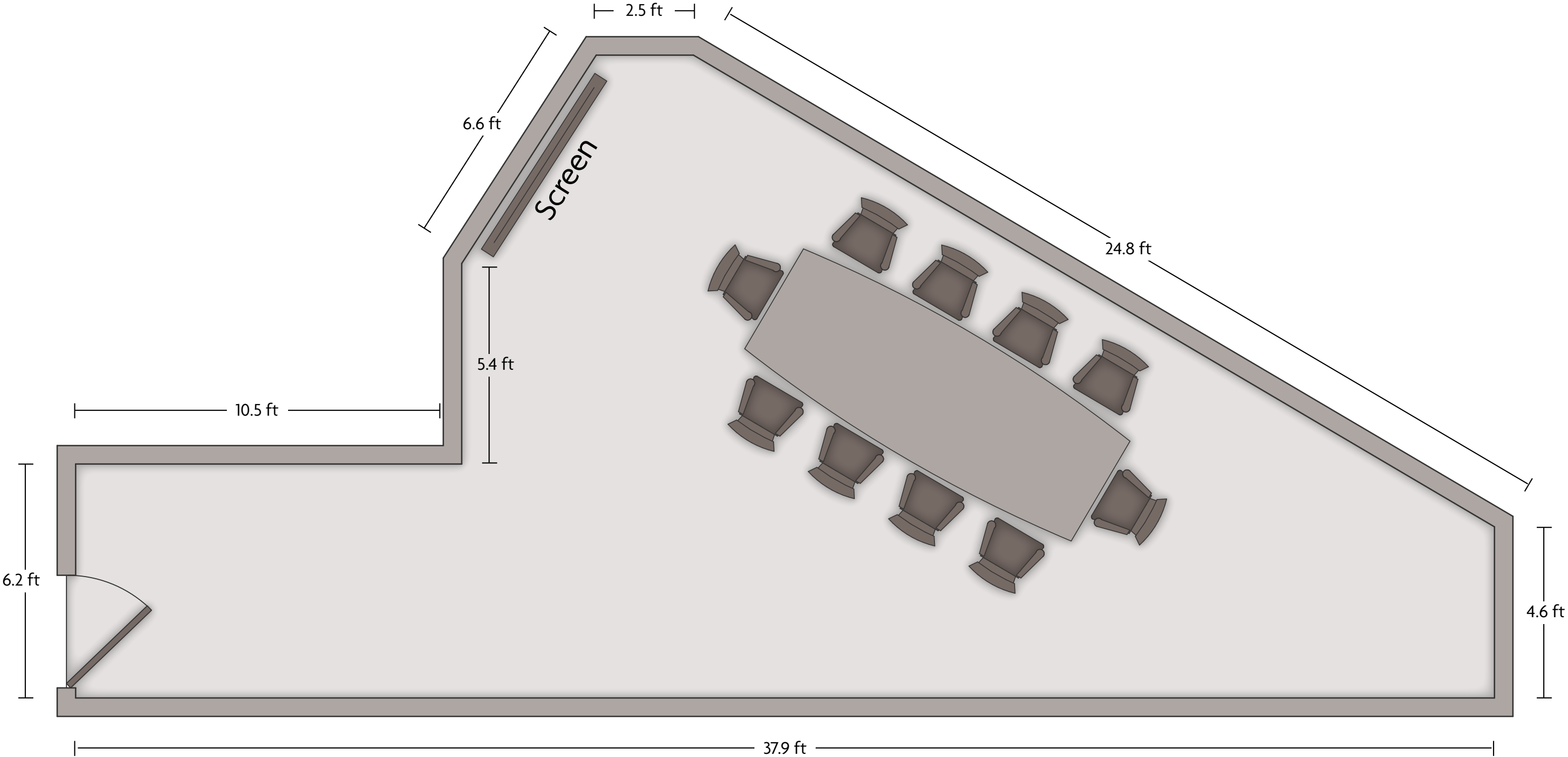


LENGTH: 12 Ft    WIDTH: 115.7 Ft    HEIGHT: 11 Ft    TOTAL SQUARE FEET: 1364.6 Sq Ft    MAXIMUM CAPACITY: 50    POWER OUTLETS: 7

1 Resort Drive | Asheville, NC 28806 | 828.254.3211

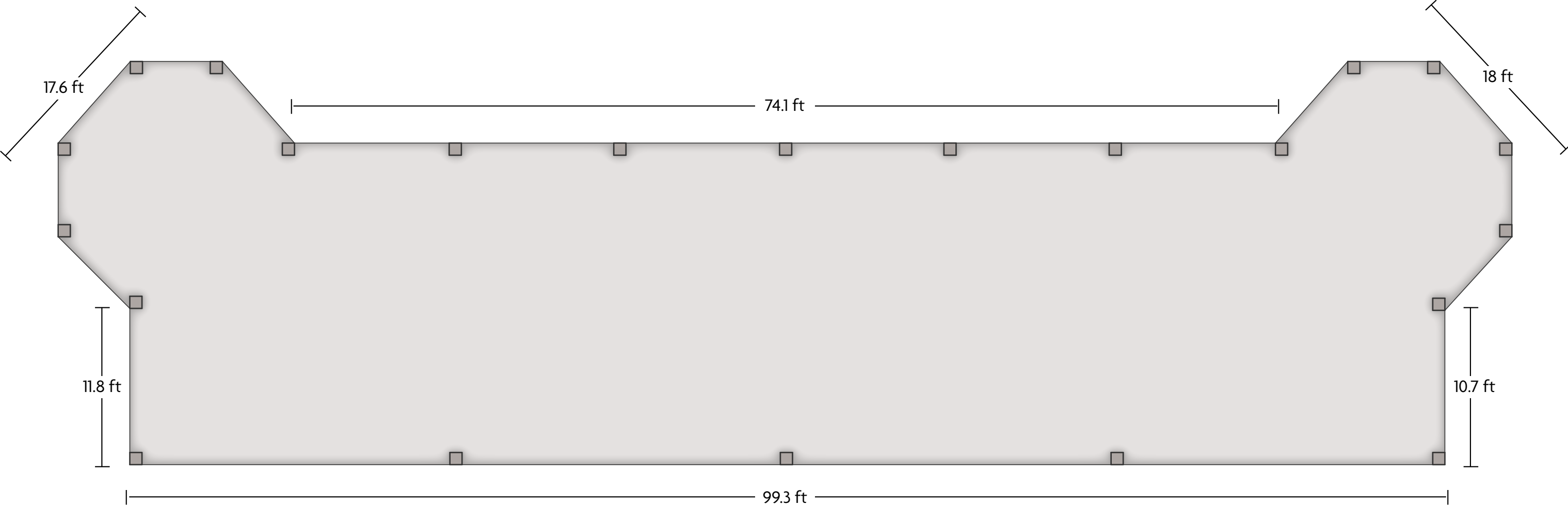
\*Multiple layout options available for this space.

# Crowne Plaza® Asheville - Swannanoa Boardroom



LENGTH: 17.2 Ft    WIDTH: 37.9 Ft    HEIGHT: 7.6 Ft    TOTAL SQUARE FEET: 392.6 Sq Ft    MAXIMUM CAPACITY: 12    POWER OUTLETS: 8

1 Resort Drive | Asheville, NC 28806 | 828.254.3211



LENGTH: 24.3 Ft    WIDTH: 99.3 Ft    HEIGHT: 12 Ft    TOTAL SQUARE FEET: 2652.7 Sq Ft    MAXIMUM CAPACITY: 150    POWER OUTLETS: 4