

CROWNE PLAZA®

— BY IHG —

Porto



FACT SHEET

A New Chapter Starts Now



FACT SHEET

LOCATION

With a privileged location in the Boavista district, the **Crowne Plaza® Porto** combines sophistication, comfort and a unique connection to the city. Perfect for both leisure and business stays, the hotel offers easy access to cultural landmarks such as Fundação de Serralves and Casa da Música, the relaxing scenery of Foz, and Mercado do Bom Sucesso. It also enjoys excellent connections to the historic city centre and the Ribeira waterfront.

CONTACTS

Crowne Plaza® Porto

Avenida da Boavista, 1466 Porto, 4100-114 Portugal

Tel: +351 226 072 500 | opocp.info@ihg.com | www.crowneplaza.com/porto

RENOVATED ROOMS & SUITES

Crowne Plaza® Porto offers 232 rooms, including 42 suites, all recently renovated to reflect a renewed approach to contemporary comfort and urban sophistication. This comprehensive refurbishment introduced a modern design, elegant lines and thoughtfully conceived solutions that elevate every guest's experience. All rooms feature complimentary Wi-Fi, television, coffee and tea amenities, air conditioning, an ergonomic work area, safe, hairdryer and exclusive bathroom amenities, ensuring a comfortable and efficient stay.



Newly Renovated, Crowne Plaza® Porto unveils a refreshed guest experience across all 232 rooms, reinforcing its positioning as a leading premium hotel in Porto.

ROOMS

Standard • Standard High Floor • Standard High Floor Lounge Access

SUITES

15 Junior Suites • 5 Corner Junior Suites • 3 Corner Junior Suites High Floor • 16 Junior Suites High Floor
1 One Bedroom Suite • 1 Diplomatic Suite • 1 Presidential Suite

AVERAGE SIZE

Standard: 34 m²/ 366 sq ft • Suites: from 47 m²/ 506 sq ft



FACT SHEET

SOMOS RESTAURANT & LOUNGE

At **soMos Restaurant & Lounge**, flavours, stories and moments are meant to be shared. In a relaxed, welcoming setting that blends a modern interior with an inviting terrace, guests can enjoy authentic Mediterranean cuisine made from the finest Portuguese ingredients — from fresh fish and traditional cured meats to vegetables and fruit from the urban garden. The menu is designed for sharing, celebrating and savouring, always in good company.



soMos Restaurant & Lounge - First Floor

Breakfast: 7:00 am – 10:30 am • Lunch: 12:30 pm - 3:00 pm • Dinner: 7:30 pm - 10:30 pm

Breakfast Buffet • Lunch and Dinner à La Carte (served daily) • Lunch Menu (Monday – Friday, except public holidays)
Chef's Suggestion (Lunch & Dinner, Monday – Friday, except public holidays)

SUNDAY BRUNCH

Available from 12:30 pm to 3:00 pm • 35,00 € per person

CONTACTS

Tel: +351 22 607 2552 | somos.restaurant@ihg.com | <https://somosrestaurantlounge.com/>

SOMOS LOUNGE

Located in the lobby on the 1st floor with direct access to the garden and terrace, soMos Lounge offers a modern, laid-back setting ideal for light meals, cocktails and socialising, with a selection of snacks, dishes and drinks.

soMos Lounge • Lobby Lounge – First Floor • Direct access to the garden and terrace
Opening hours: 10:30 am – 01:00 am • Tel.: +351 22 607 2500





FACT SHEET

FITNESS CENTRE

At Crowne Plaza® Porto, the **Fitness Centre** has been designed to offer a comfortable and complete workout experience. Featuring elliptical machines, free weights, a stationary bike, and a treadmill, it caters to a wide range of fitness levels and training goals.

Fitness Centre | Ground Floor
Available 24/7



PORTO URBAN SPA

The **Porto Urban SPA** offers a relaxing atmosphere and a wide range of treatments dedicated to well-being and rejuvenation. Highlights include relaxation, therapeutic, sports, and pre-natal massages, as well as facial and body treatments such as exfoliation and anti-cellulite therapies.



Porto Urban Spa | Ground Floor

Spa Facilities:

3 Treatment Rooms (double, single, and foot spa) • Jacuzzi • Sauna • Turkish Bath

Opening hours • **Monday:** 2:00 pm - 8:00 pm | Tuesday to Friday: 11:00 am - 8:00 pm | Weekend: 10:00 am - 7:00 pm

CONTACTS

Tel: +351 22 607 2500 | portourban.spa@ihg.com



FLOOR PLAN

CAPACITY & FEATURES

Whether it is a small meeting, a large-scale convention, or a banquet, **Crowne Plaza® Porto** provides functional spaces and a range of personalised services to ensure the success of any event:

Main room measuring 370 m² with a ceiling height of 4.1 m, ideal for large corporate or social events.

11 meeting rooms, 10 of which benefit from natural light.

“All Day” room with a capacity of up to 60 people.

Audiovisual equipment available in all meeting rooms.

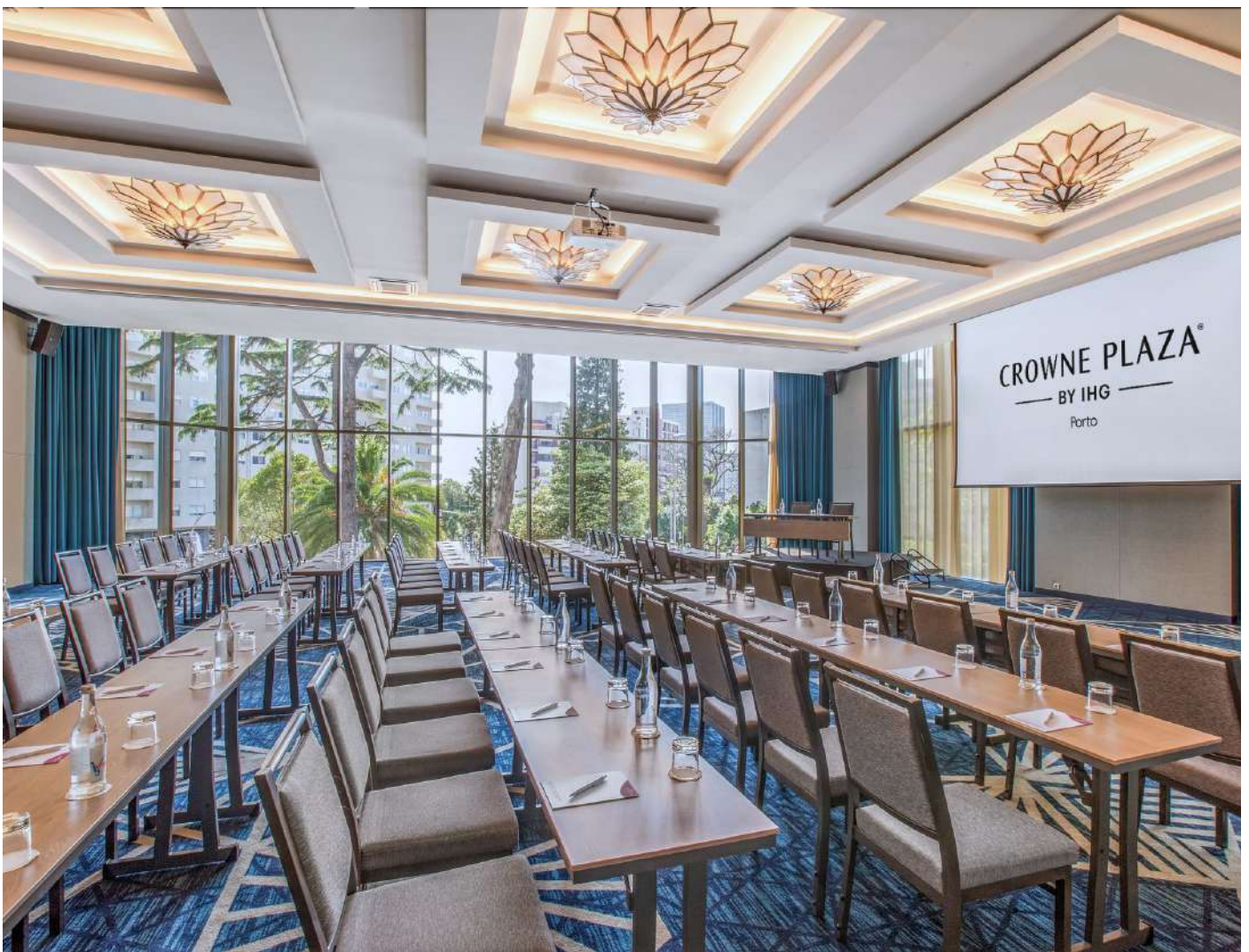
Business Corner with computer and printer.

Creative consultancy and personalised planning for event conceptualisation.

Complimentary Wi-Fi available throughout the hotel.

Catering solutions for meals and coffee breaks.

At the **Crowne Plaza® Porto**, every detail is carefully prepared to meet your needs, with attentive, flexible service that exceeds your expectations.



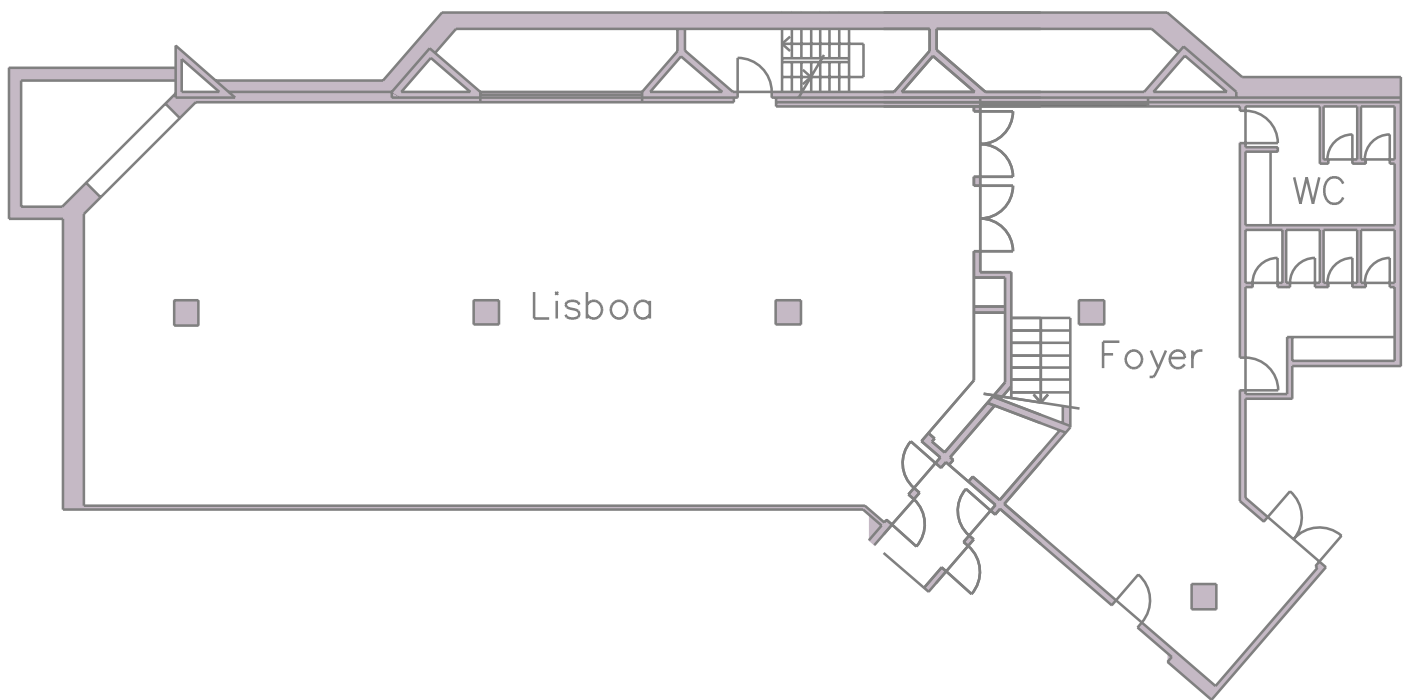


FLOOR PLAN

GROUND FLOOR

The ground floor is home to the Lisbon Room, ideal for conferences, presentations, or banquets. The room features a naturally lit foyer, perfect for coffee breaks and receptions.

The layout of the space also allows for the set-up of welcome desks to greet participants.



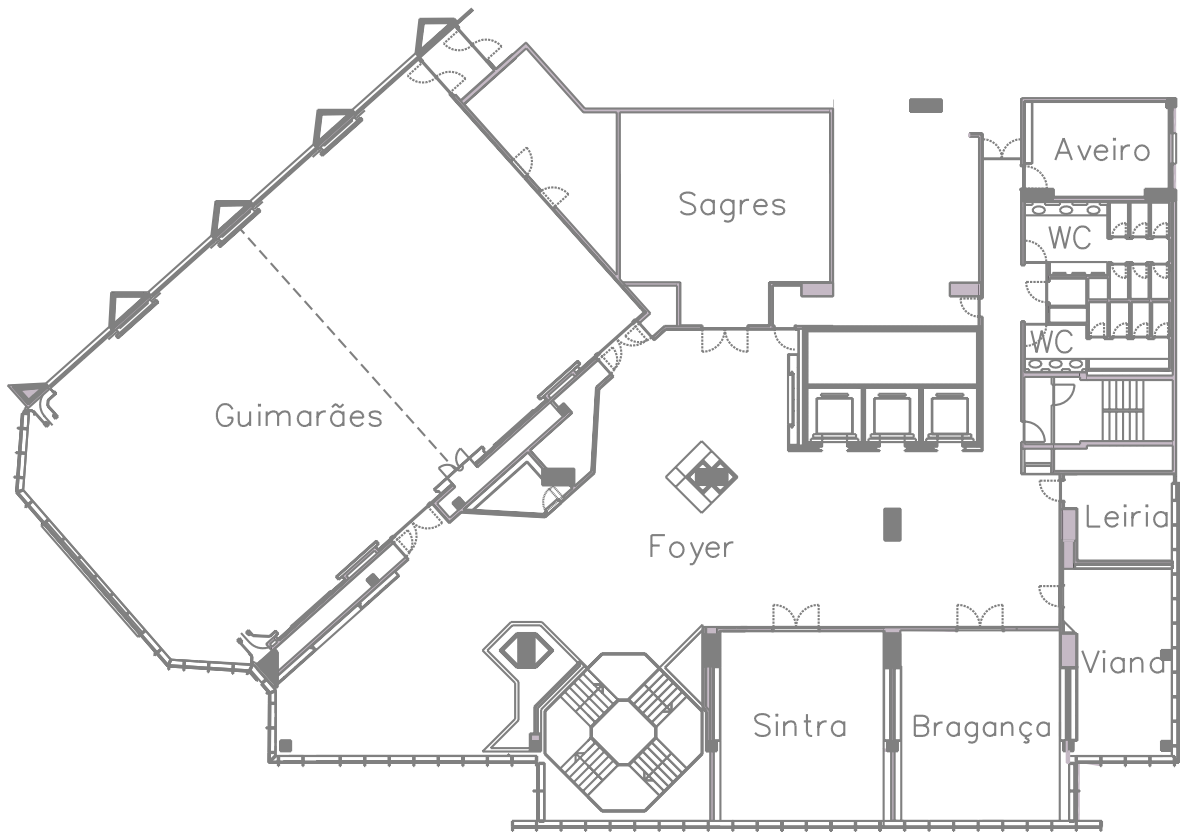


FLOOR PLAN

SECOND FLOOR

The second floor of Crowne Plaza® Porto offers a wide range of options for meetings, conferences, and social or corporate events. This floor features eight rooms of varying sizes. Guimarães I and II can be used together or separately, making them ideal for larger-scale events. The Sintra, Bragança, Viana, Leiria, Aveiro, and Sagres rooms are perfect for smaller meetings, workshops, or breakout sessions.

The spacious central foyer, filled with natural light, provides an ideal setting for coffee breaks, exhibition areas, networking, or the set-up of welcome desks. The versatility of the space, combined with the proximity of the rooms, ensures the smooth and efficient organisation of any event.



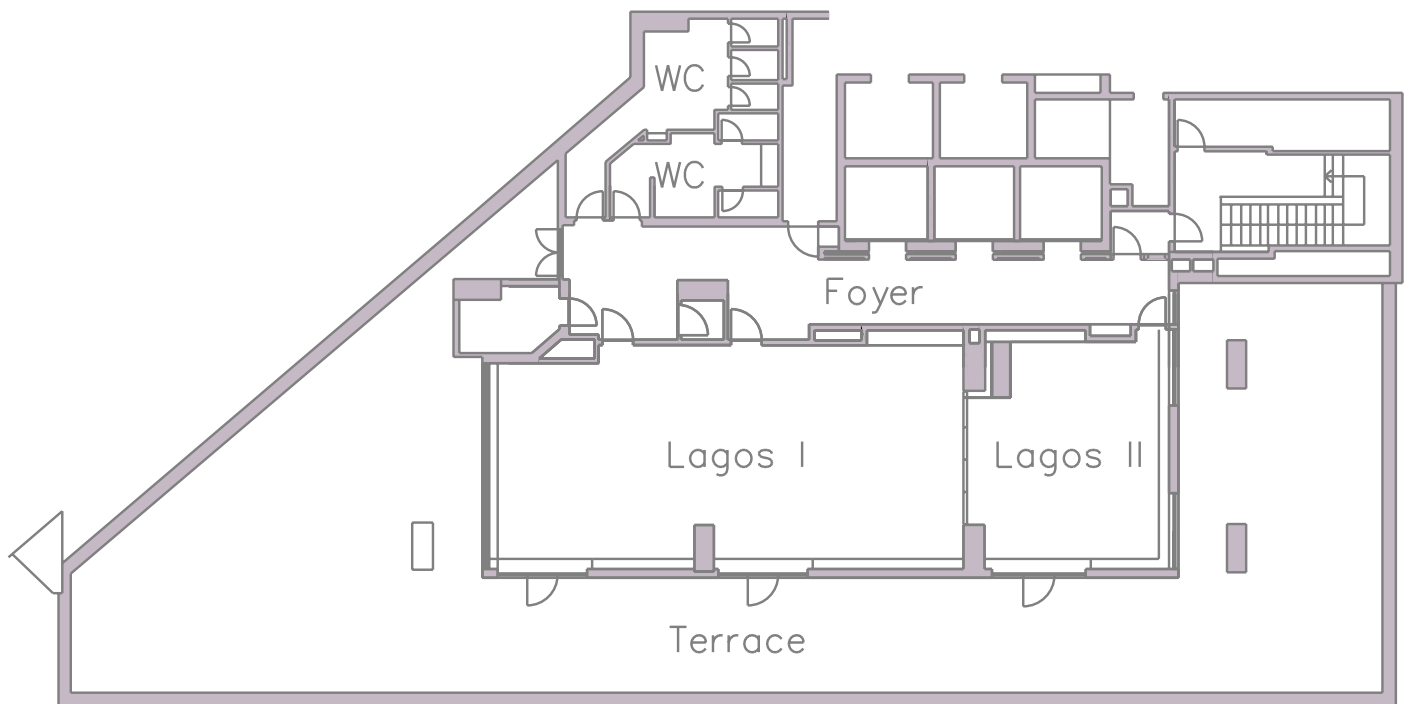


FLOOR PLAN

THIRD FLOOR

The third floor features the Lagos I and Lagos II meeting rooms, which can be used individually or combined for larger events. This floor also includes a foyer, ideal for welcoming participants or setting up welcome desks.

The outdoor terrace offers a pleasant, naturally lit environment, perfect for breaks or informal outdoor events. Facilities also include supporting restrooms, ensuring comfort and convenience for all participants.



CROWNE PLAZA[®]
— BY IHG —
Porto