



(86) 757 6681 8888

更多婚宴咨询，请联系我们的皇冠会务总监

Fro further information, please do not hesitate to
contact our Crowne Meeting Director



佛山南海利泰皇冠假日酒店

CROWNE PLAZA FOSHAN NANHAI

电话 T: (86) 757 6681 8888 传真 F: (86) 757 6686 0000

中国广东省佛山市南海区环岛南路20号 邮编: 528200

No. 20, Huandao South Road, Nanhai District, Foshan 528200, Guangdong Province, P.R. China

info.cpnh@litedhotels.com www.crowneplaza.com 400 884 0888



WEDDING CEREMONY

精心打造 尽享不凡



CELEBRATE YOUR BIG DAY



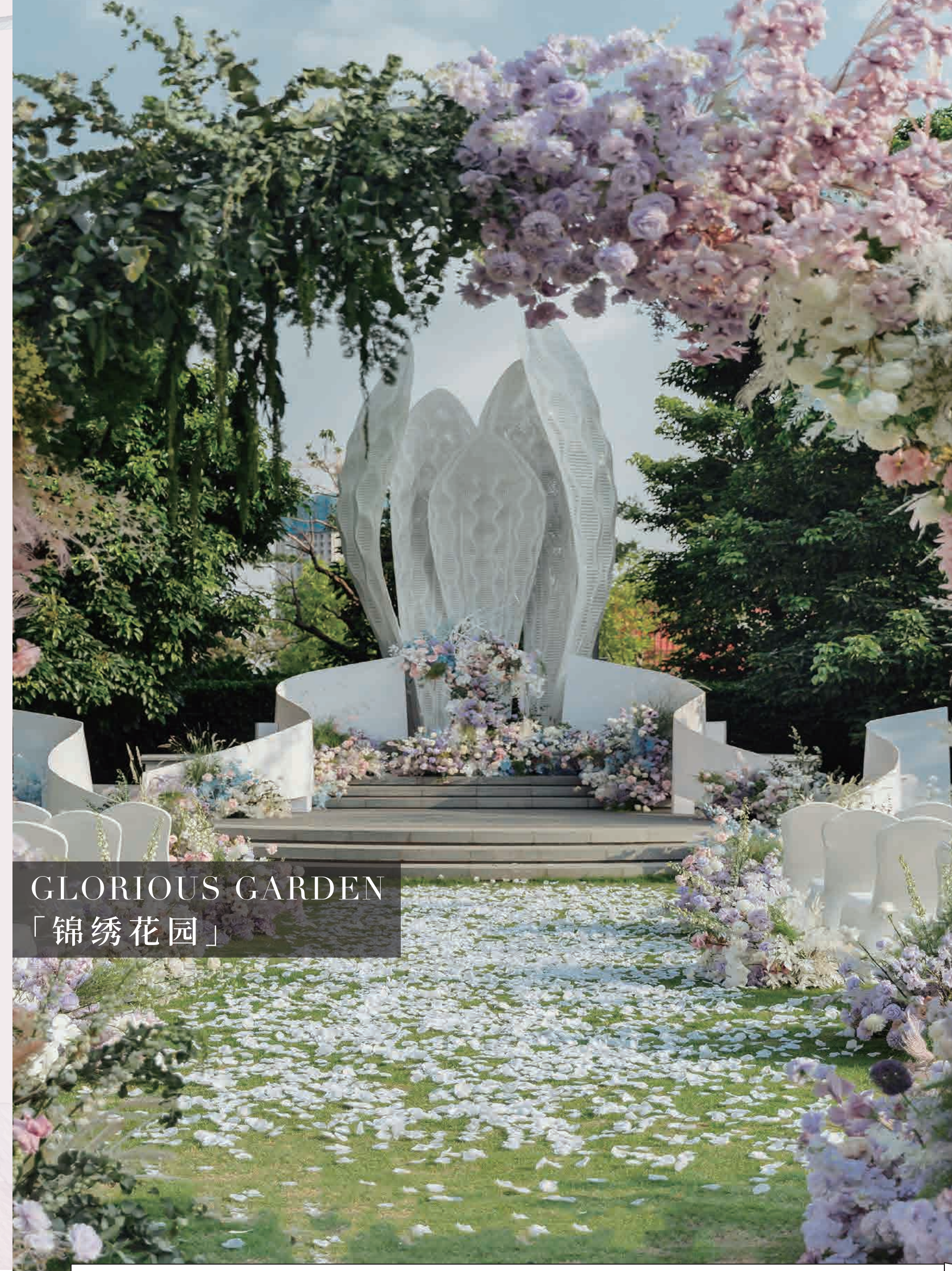
STAY CONVENIENT

「优越位置 完美场地」



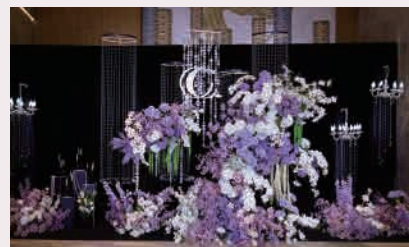
佛山南海利泰皇冠假日酒店位于粤港澳大湾区及三龙湾高端创新集聚区的核心地带——三山新城内。酒店地理位置优越，毗邻风光秀丽的文翰湖及绚丽多姿的花海，驱车10分钟即可抵达广州南站，30分钟可抵达佛山市中心。酒店优雅别致的设计，及含蓄动人的岭南风韵，激发无尽浪漫灵感。我们承诺为您的大喜之日量身定制每个细节，从选定婚礼套餐到撰写菜谱，一步一步将您梦中的婚礼落地。

Be inspired by the enchanting spaces of Crowne Plaza Foshan Nanhai, an internationally acclaimed hotel beside the Wenhan Lake and flower sea in Sanshan New Town at the heart of Sanlong Bay Hi-tech Innovation Zone. It takes only 10 minutes to drive to Guangzhou South Railway Station and 30 minutes to Foshan downtown. Exceptional interior design and contemporary expression of lingnan style brings you countless romantic inspiration. With full range of packages meticulously customized by our dedicated specialists and exquisitely crafted menus prepared by our talented chefs, we are committed to tailoring every detail of your fairytale wedding.

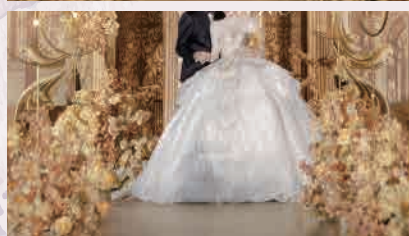
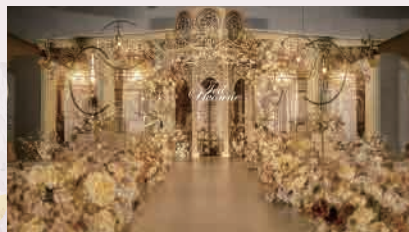


GLORIOUS GARDEN
「锦绣花园」

Wedding 主题婚礼



Romantic

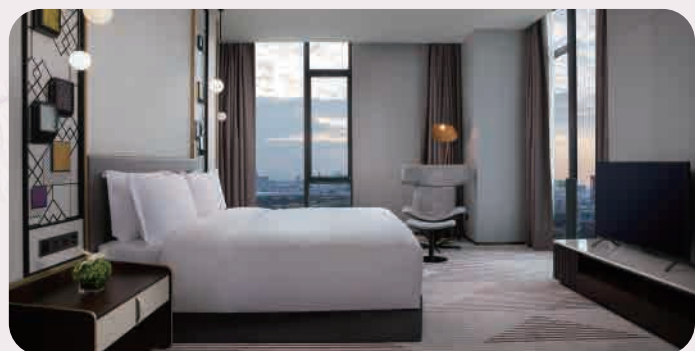


Memory 镌刻爱意



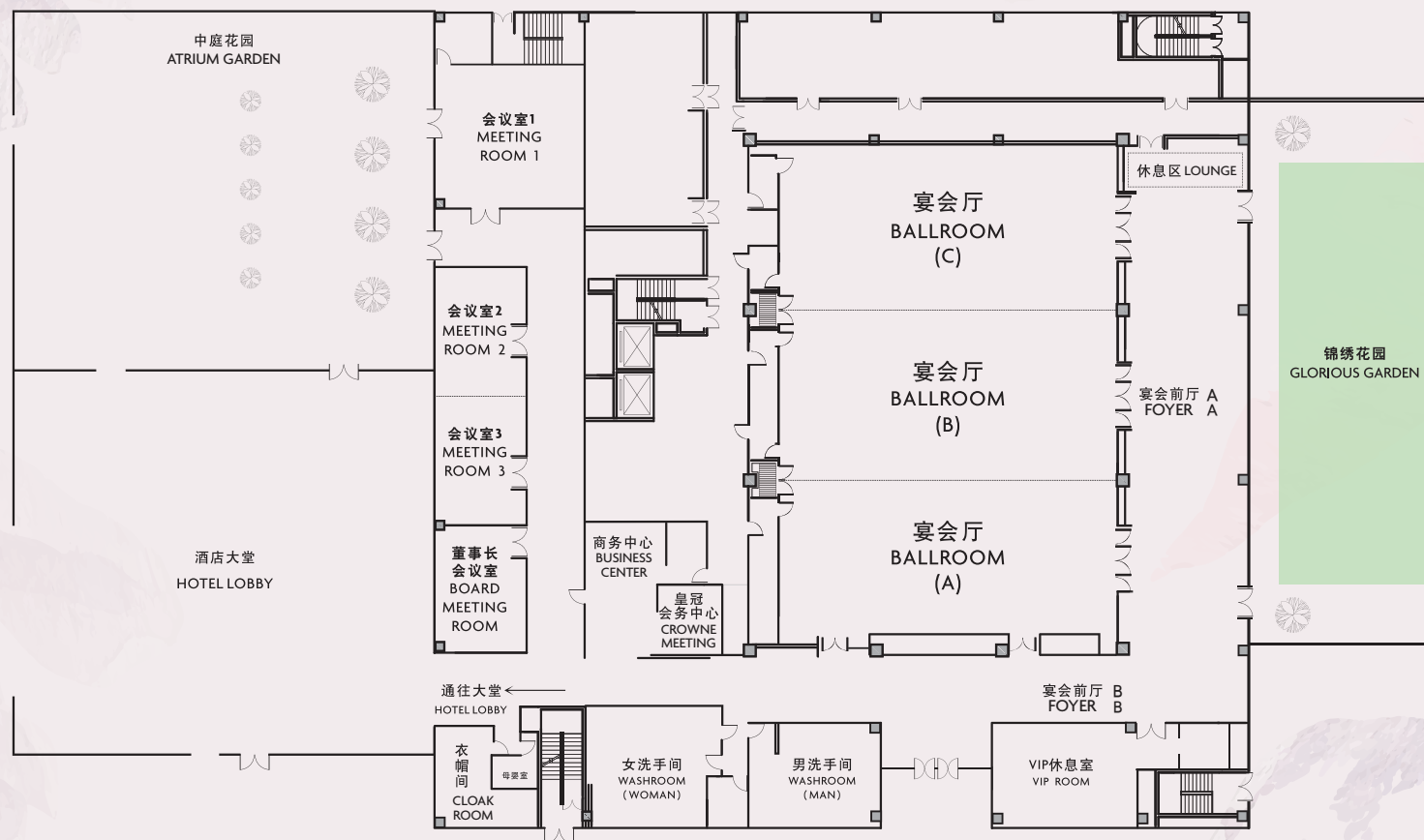
SWEET TIME

「甜蜜时光」



FLOOR PLAN

「场地平面图」



酒店外观 Hotel Exterior



酒店大堂 Hotel Lobby

DESIGN YOUR SPECIAL DAY

「浪漫婚礼 见证重要时刻」



斯人若彩虹，遇上方只有。

佛山南海利泰皇冠假日酒店有幸见证您生命中的重要时刻。

灵活多样的婚宴场地，给您更大的造梦空间。

专业的婚礼策划团队力臻完美，

竭诚为您的婚礼度身打造每个精致细节，

令回忆毕生难忘。而我们精致美味的饕餮喜宴，

为您的宾客带来一场惊喜的味觉享受。

Every once in a while, you find someone who's iridescent, and when you do,
nothing will ever compare.

Let's bring your special day to life at Crowne Plaza Foshan Nanhai.

A variety of flexible and distinctive wedding venues provide you more space for
dream making. Our professional wedding team will go above and beyond to
make your dreams come true for an unforgettable happily ever after wedding
that exceeds every expectation. The exquisite and delicious wedding banquet
delights your guests with amazing taste enjoyment.



FOYER 「豪华启幕」

宽敞的宴会前厅与锦绣花园相连，
秀丽的园林美景一览无余，采光通透。

Spacious foyer is complementing floor-to-ceiling windows with
garden view and nature lighting right from the Glorious Garden.



DINE IN STYLE

「精致美馔」

无论您钟情传统中式盛宴、西式自助餐或时尚鸡尾酒派对，
屡获殊荣的厨师团队皆以上乘的食材炮制各式美味佳肴，为您的梦幻婚礼锦上添花。

Be it a cocktail, a western buffet or a Chinese banquet,
our skillful chefs take pride in using only fine ingredients to create exquisite delicacies to impress every palate.



THE BALLROOM

「喜结良缘」

简约时尚的宴会会议区域，融入对岭南艺术的全新演绎，充分满足现代人对优雅和浪漫的生活美学追求。豪华大气的无柱式大宴会厅占地700平方米，可分别容纳450人的圆桌宴会至660人的鸡尾酒会；配备先进的多媒体演示系统和视听设备。无论是您期待经典的中式婚宴，还是优雅的西式婚宴，在这里都有多种演绎可能。

4间面积不等的会议室及中餐厅8个新中式风格的中餐包厢可满足宾客的不同需求。

Meeting and banquet area adopts the latest fashionable style in the world, with contemporary expression of Lingnan art, fully showing the elegance and romance of modern life. The astylar grand ballroom covers an area of 700 square meters, can comfortably accommodates up to 450 persons for a round-table banquet or 660 persons for a cocktail party, which is equipped with advanced multimedia audio-visual systems. It offers a variety of interpretation, whether it's classic Chinese style or elegant western style wedding. 4 meeting rooms of different sizes and 8 private dining room of new Chinese style at Chinese Restaurant could cater for different needs.



GLORIOUS GARDEN

「花园秘境」



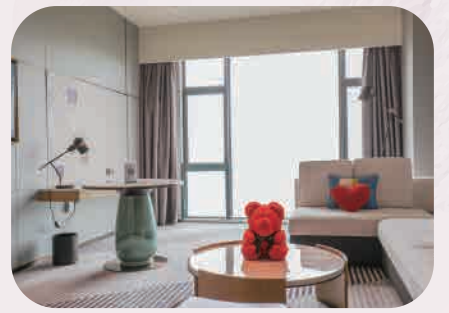
以花草为名，天地为证，向全世界说爱你。

锦绣花园拥有占地640平方米，宽大平坦的绿茵草坪，融合精致的园林艺术设计，赋予户外婚礼多种浪漫可能。独立的车辆进出通道及预留的硬化地面，给予婚礼设计师更多挥洒灵感的空间。专属的吧台及宾客休息区，出色的厨师团队及宴会服务团队，为您打造更风格别具的婚前派对或鸡尾酒派对。

In the name of flowers and plants, nature as witness, say I Love You to the world.

The most gorgeous Glorious Garden features 640 square meters green lawn spaces, which endows outdoor wedding with a variety of romantic possibilities. Separate car entrance and pre-worked foundation gives wedding designers more space to exert inspiration. Exclusive seating area and bar counter, combined with excellent chef and banquet service team, could cater for stylish bachelor party or cocktail party.





WEDDING ROOM

「浪漫婚房」

甜蜜温馨的婚房承载着爱与希望，与伴侣比肩临窗，即可将文翰湖美景尽收眼底。为新人贴心准备的婚房装饰，给您宾至如归之感。

A sweet wedding guestroom that is the perfect sanctuary for a couple, where you could enjoy the gorgeous lake view with your beloved one by the floor to ceiling window. Our team carefully prepare romantic decoration to make you feel home away from home.



VENUES CAPACITY

「场地容量图」

规格 DIMENSIONS				容量 CAPACITY						
酒店一层 LEVEL 1	尺寸 SIZE (M)	面积 SQ (M)	楼高 CEILING HEIGHT(M)	宴会式 BANQUET	课桌式 CLASSROOM	剧院式 THEATRE	酒会式 COCKTAIL	U型 U-SHAPE	董事会 BOARDROOM	回字形 HOLLOW SQUARE
宴会厅 BALLROOM	31.9 x 22	700	7.8	450	450	660	660	105	132	132
宴会厅 A BALLROOM (A)	10.5 x 22	230	7.8	130	120	200	200	57	66	66
宴会厅 B BALLROOM (B)	10.9 x 22	240	7.8	130	120	200	200	57	66	66
宴会厅 C BALLROOM (C)	10.5 x 22	230	7.8	130	120	200	200	57	66	66
宴会厅 A+B BALLROOM (A+B)	21.4 x 22	470	7.8	200	240	390	390	75	96	96
宴会厅 B+C BALLROOM (B+C)	21.4 x 22	470	7.8	200	240	390	390	75	96	96
会议室 1 MEETING ROOM 1	8.7 x 9.2	80	3.65	40	27	54	54	27	30	30
会议室 2 MEETING ROOM 2	8 x 5	40	3.65	10	18	30	30	15	18	18
会议室 3 MEETING ROOM 3	8 x 5	40	3.65	10	18	30	30	15	18	18
会议室 2+3 MEETING ROOM 2+3	16 x 5	80	3.65	20	36	60	60	27	30	30
董事会议室 BOARD MEETING	7.7 x 5.8	45	3.65	-	-	-	-	-	10	-
VIP休息室 VIP ROOM	6.5 x 8.5	55	3.5	-	-	-	-	-	-	-
宴会前厅 A BALLROOM FOYER A	33 x 6.8	225	7.8	-	-	-	-	-	-	-
宴会前厅 B BALLROOM FOYER B	32 x 4.5	145	7.8	-	-	-	-	-	-	-
锦绣花园 GLORIOUS GARDEN	32 x 20	640	-	-	-	-	-	-	-	-