



CROWNE PLAZA[®]
 AN IHG[®] HOTEL
 INDIANAPOLIS - DWTN - UNION STN

SO MUCH MORE

than a meeting

Crowne Plaza[®] Indianapolis Downtown Union Station, conveniently located in the heart of downtown Indianapolis, offers seamless service and premium accommodations to meet the needs of today's business traveler.



Guest Rooms

- Large, comfortable beds with quality bedding, pillows and linens
- 26 authentic Pullman train car sleeper rooms
- Spacious work spaces with dataports and complimentary wireless Internet access

Meeting Rooms

- 55,000 square feet of unparalleled meeting space including Historic Grand Hall, breakout rooms and executive boardroom
- On-site audiovisual department



Public Spaces

- Distinctive and welcoming sense of arrival
- Well-defined, flexible spaces to meet, work and relax

Business Center

- Convenient 24/7 business center
- Complimentary wireless Internet access throughout the hotel



Food & Beverage

- Taggart's offers handcrafted cocktails, lunch and dinner
- 123 West serves breakfast daily

Leisure Facilities

- Well-equipped fitness center
- On-site indoor swimming pool



When you check into Crowne Plaza Indianapolis Downtown Union Station, you'll enjoy unsurpassed value with a unique blend of luxury comforts. Our renovated accommodations and enclosed skywalk connection to the adjacent Indiana Convention Center & Lucas Oil Stadium and close proximity to area businesses makes us the perfect location. Check in today. We look forward to welcoming you.

Guest Room & Amenities

- 273 stylish renovated rooms
- 26 authentic Pullman train car sleeper rooms
- Rooms feature Crowne Plaza Sleep Advantage® program
- Spacious work spaces with convenient dataports
- Complimentary wireless Internet access
- Flat screen televisions
- In-room refrigerators
- Premium channels/pay per view
- Personalized voice mail
- Individual climate control
- Coffee maker, iron/ironing board and cosmetic mirror
- Room service for in-room dining
- IHG Rewards®

Facilities & Services

- 55,000 square feet of meeting space
- Historical Grand Hall
- Breakout rooms and executive boardroom
- Complete audiovisual services
- Custom menus including Healthy Options Meeting Menu
- Connected to Indiana Convention Center and Lucas Oil Stadium by Indianapolis Downtown Skywalk
- Guaranteed two-hour RFP response
- Dedicated certified Crowne Meetings Director
- Daily Meeting Debrief for daily expenditure review
- 123 West serves breakfast daily
- Taggart's offers handcrafted cocktails, lunch & dinner
- Indoor pool and fitness center
- Indiana Pacers Bike Share and Blue Indy Electric Car Rental located nearby
- Close proximity to sporting and event venues, entertainment/cultural districts, restaurants, shopping, major attractions and area businesses

YOUR SUCCESS MATTERS.

Ideally located in the heart of downtown Indianapolis and situated in America's first union station, Crowne Plaza Indianapolis Downtown Union Station is the city's most unique hotel! Our Romanesque revival-style hotel boasts 273 renovated guest rooms to include 26 early 1900's authentic Pullman Train Car rooms and over 55,000 square feet of meeting space.

With one of Indianapolis' most premier locations, our guests can enjoy all that Indianapolis has to offer for shopping, dining, and entertainment all within walking distance. We are connected to the Indiana Convention Center and Lucas Oil Stadium, home of the Indianapolis Colts, and just minutes from Banker's Life Fieldhouse, Circle Centre Mall, The Indianapolis Zoo & White River Gardens, and the NCAA Hall of Champions. Our hotel is listed on the National Register of Historic Places and is still an active train station, which enhances its ambiance and authenticity.

The hotel's Grand Hall boasts over 26,000 square feet of unparalleled meeting space featuring distinctive arches, columns, glass barrel ceiling and 20 foot leaded, stained glass wagon wheel windows. The ceiling is dominated by over 3,000 square feet of original stained glass. It is like no other in the city of Indianapolis!

For meetings of 10 to 500 people, the Crowne Plaza Indianapolis Downtown Union Station is the perfect setting, providing a unique experience for all of your meeting attendees. Our staff offers exemplary service levels while your guests experience a step back in history and still enjoy the modern conveniences of today!



2-Hour Response Guarantee

You work at the speed of light. And now we do too. So when you call for a quote, you're guaranteed to get a response within two hours and a proposal by the next business day.



Crowne Meetings Director

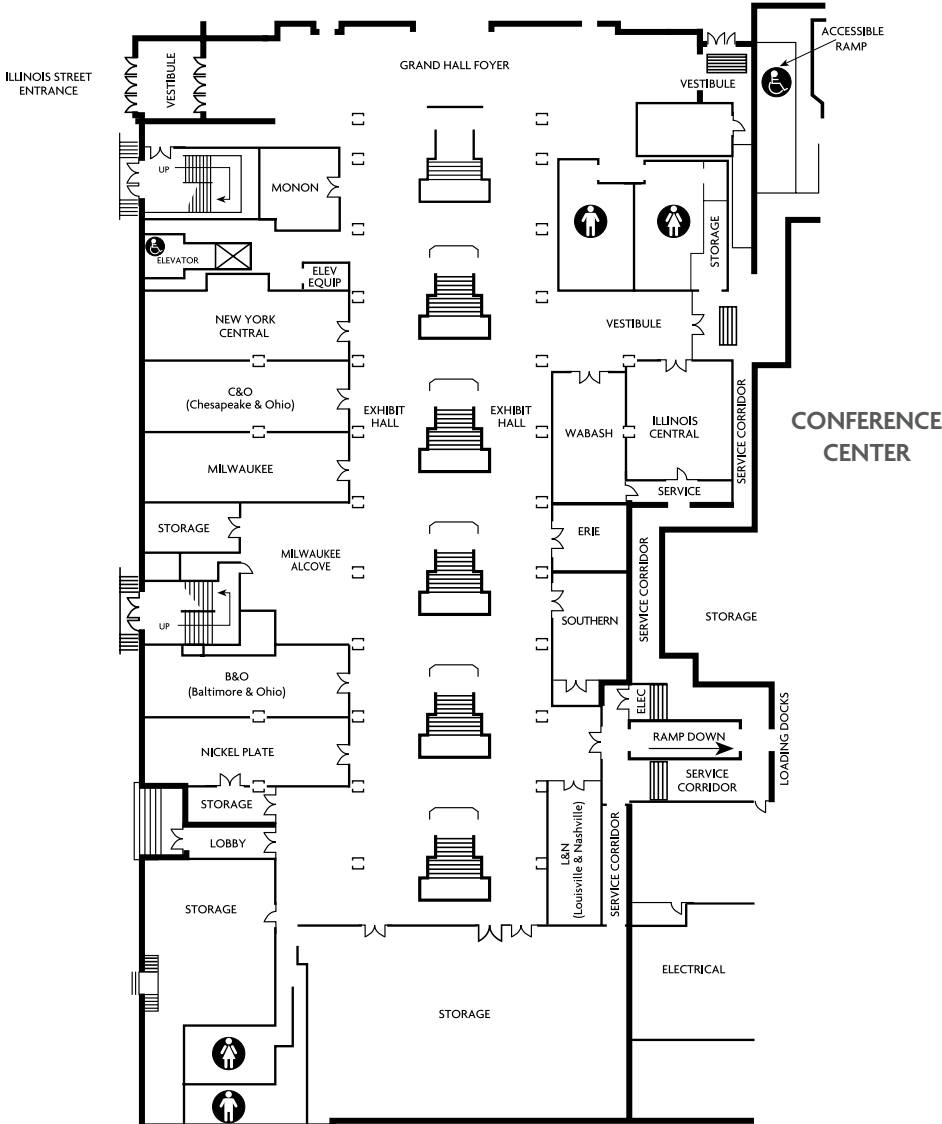
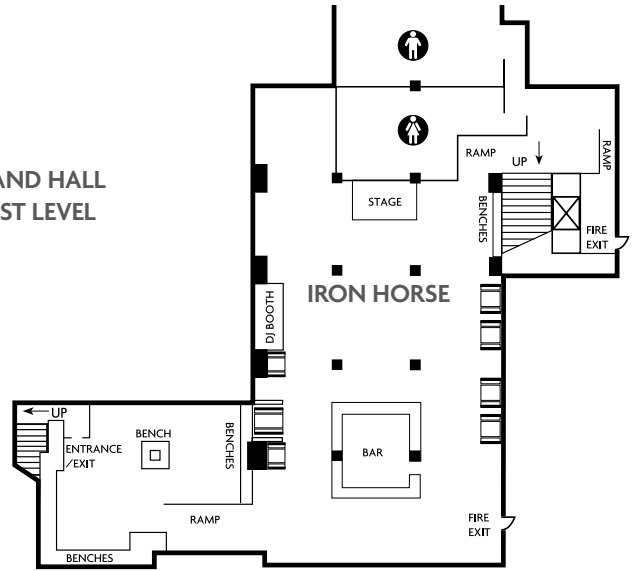
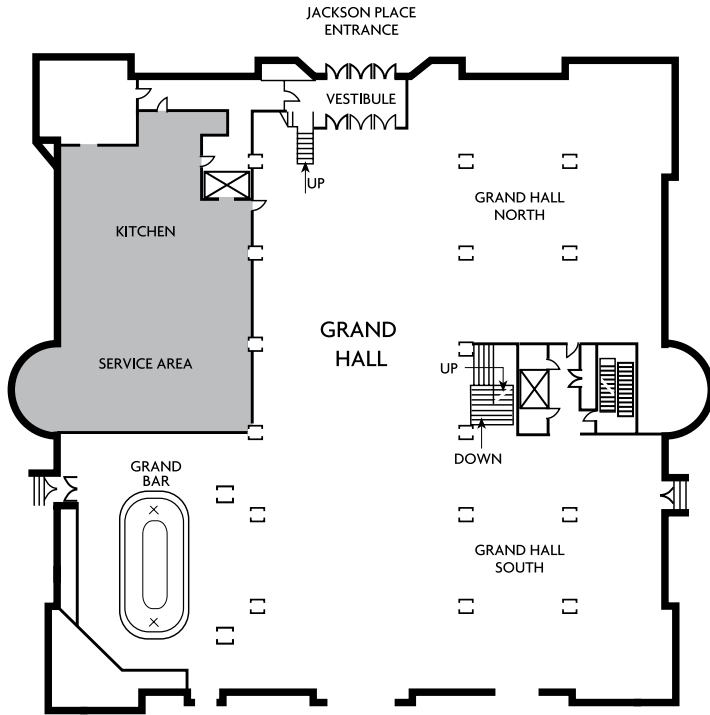
From the moment you start planning to the time you leave, you'll have a dedicated Crowne Meetings Director working with you to pull off the perfect meeting. We handle the details so you can focus on the big picture.



IHG® Business Rewards

Our loyalty program for meeting planners will reward you for all your hard work. Enroll and you'll receive 3 points for every dollar spent on qualified meetings at Crowne Plaza. Points never expire and you can redeem points for personal rewards or for savings on future meetings with a Meeting Credits Reward. For complete details, please visit ihgrewards.com.

UNION STATION FUNCTION SPACE

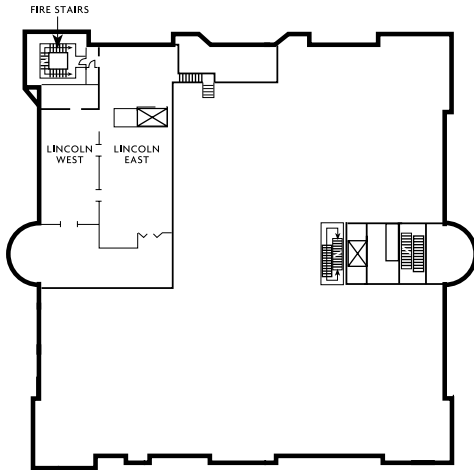




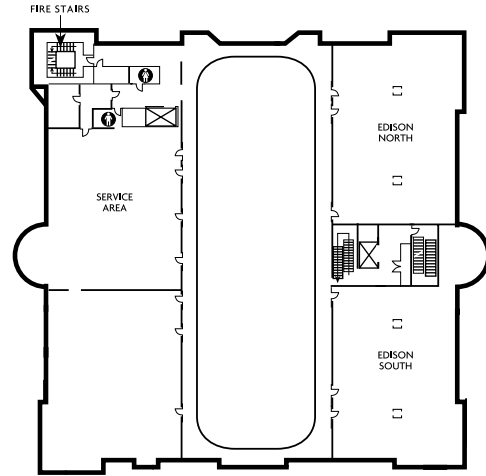
Room Measurements & Capacities

ROOM	SQ. FT.	THEATRE	CLASSROOM*	BANQUET**		U-SHAPE*	EXHIBITS – 8x10 / 10x10
Grand Hall Ballroom	13605			784			59 / 51
Grand Hall Main	6708	600	378	440			36 / 31
Grand Hall Bar	2160						40' x 54' x 22'
Grand Hall South	2419	200	100	150			12 / 10
Grand Hall North	2318	200	100	150			11 / 10
Monon	567	35	15	24	16	12	21' x 27' x 9'
New York Central	986	80	48	50	30	26	17' x 58' x 9'
C&O (Chesapeake & Ohio)	1102	80	48	50	32	30	19' x 58' x 9'
Milwaukee	1007	80	48	50	30	26	19' x 53' x 9'
B&O (Baltimore & Ohio)	1102	80	48	50	32	30	19' x 58' x 9'
Nickel Plate	1102	80	48	50	32	30	19' x 58' x 9'
Illinois Central	891	65	42	40	32	28	27' x 33' x 9'
Wabash	858	65	42	40	30	26	22' x 39' x 9'
Erie	418	30	12	20	10	8	19' x 22' x 9'
Southern	704	50	25	30	16	12	22' x 32' x 9'
L&N (Louisville & Nashville)	524	30	15	24	16	14	14' x 37' x 9'
Exhibit Corridors (2)	4320						33 / 25
Iron Horse	5966			242			
Iron Horse Upper Level	4547						
Iron Horse Lower Level	1419						

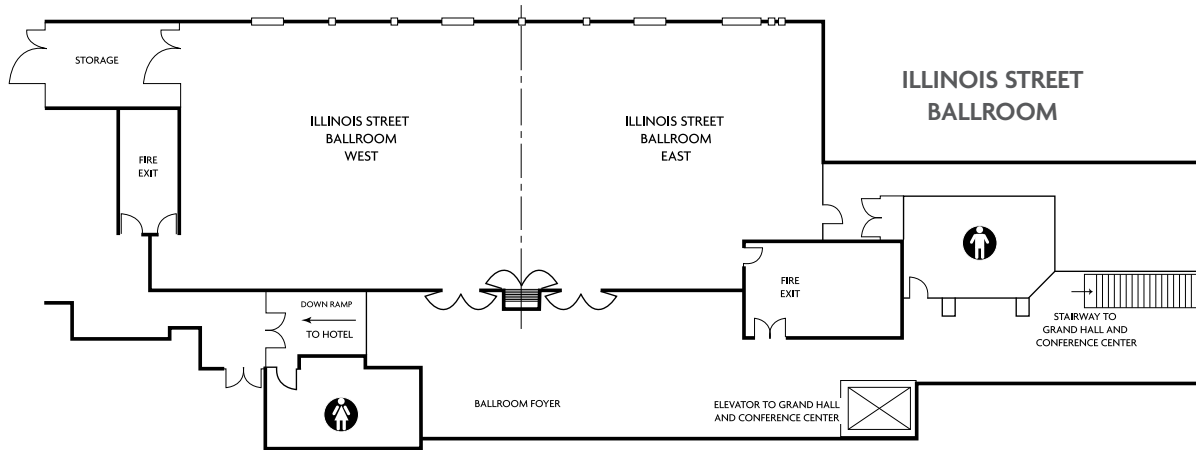
UNION STATION FUNCTION SPACE



**GRAND HALL
MEZZANINE LEVEL**



**GRAND HALL
SECOND LEVEL**



**ILLINOIS STREET
BALLROOM**

UNION STATION GRAND HALL – MEZZANINE & SECOND LEVEL

ROOM	SQ. FT.	THEATRE	CLASSROOM*	BANQUET**	CONFERENCE*	U-SHAPE*	EXHIBITS – 8x10 / 10x10	DIMENSIONS
Mezzanine Level								
Lincoln	1528	40	20	100	20	16		41' x 37' x 10'
Second Level								
Edison North	2562	180	100	150	30	25		42' x 61' x 12'
Edison South	2562	180	100	150	30	25		42' x 61' x 12'

*3 Per 6 Foot and **Rounds of 6

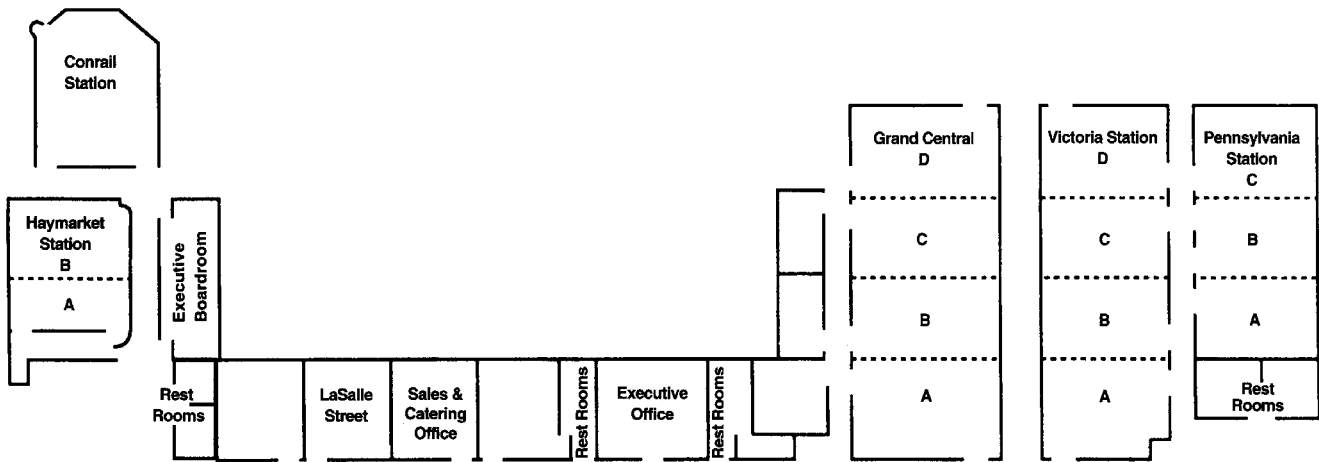
UNION STATION ILLINOIS STREET BALLROOM – SECOND LEVEL

ROOM	SQ. FT.	THEATRE	CLASSROOM*	BANQUET**	CONFERENCE*	U-SHAPE*	EXHIBITS – 8x10 / 10x10	DIMENSIONS
Illinois Street Ballroom	4452	450	240	300	90	90	45	106' x 42' x 14'
East	2100	200	120	130	50	45	20	50' x 42' x 14'
West	2352	225	130	160	60	54	25	56' x 42' x 14'
Pre-Function	2320							116' x 20' x 14'

*3 Per 6 Foot and **Rounds of 10



CROWNE PLAZA HOTEL FUNCTION SPACE



CROWNE PLAZA HOTEL – FIRST LEVEL

ROOM	SQ. FT.	THEATRE	CLASSROOM*	BANQUET**	CONFERENCE*	U-SHAPE*	DIMENSIONS
Grand Central Station	3735	375	160	240	66	60	83' x 45' x 10'
Grand Central A	1035	100	39	60	30	27	23' x 24' x 10'
Grand Central B, C, D (each)	900	90	36	60	30	27	20' x 45' x 10'
Victoria Station	3320	320	144	200	66	6-	83' x 40' x 10'
Victoria Station A	920	90	36	50	27	27	23' x 40' x 10'
Victoria Station B, C, D (each)	800	80	36	50	27	27	20' x 40' x 10'
Pennsylvania Station	2280	200	90	120	42	45	60' x 38' x 10'
Pennsylvania A, B, C (each)	760	80	30	40	21	21	20' x 38' x 10'
Haymarket Station A	760	70	30	50	21	21	20' x 38' x 10'
Haymarket Station B	760	70	30	50	21	21	20' x 38' x 10'
Executive Boardroom	720				20		36' x 18' x 10'
Conrail Station	1200	100	60	70	30	27	30' x 40' x 10'

*3 Per 6 Foot and **Rounds of 10



CROWNE PLAZA®

AN **IHG®** HOTEL

INDIANAPOLIS - DWTN - UNION STN



CROWNE PLAZA INDIANAPOLIS DOWNTOWN UNION STATION

123 West Louisiana Street • Indianapolis, IN 46225 • 317-631-2221 • indycrowne@genhotels.com • www.crowneplazaindydowntown.com