



Regent

TAIPEI



Meeting and exceeding the expectations of distinguished international business travelers and local patrons alike,
its timeless elegance defines the standard of what a world-class luxury hotel should be.

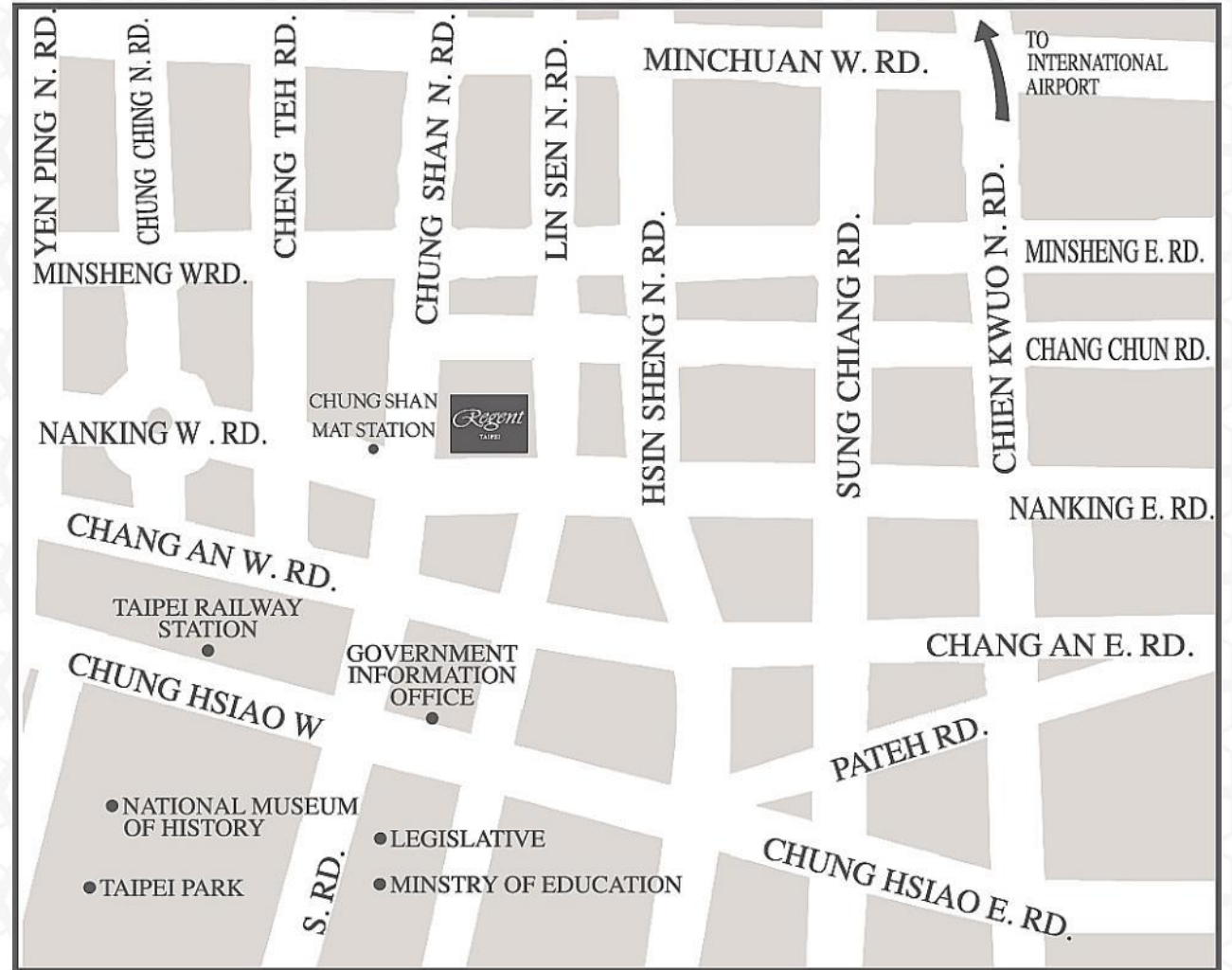


A fine blend of east and west, with contemporary comfort.

LOCATION

Our superb downtown location is just a short walk from the city's main attractions and accessible via excellent transport links.

- In the heart of Taipei's main commercial district
- Overlooking the city and leafy parks
- 50-minutes drive from Taiwan Taoyuan International Airport
- 5-minutes walk to Zhongshan MRT station
- Easily accessible via the Taipei main railway station





Modern classic style and large ceiling-height windows create beautiful environments for an exceptionally comfortable stay, with spectacular views over the city and its parks.

ACCOMMODATION

Our 60 luxurious suites and more than 470 elegantly appointed rooms are among the most spacious luxury hotel accommodations in Taipei. Modern classic style and large ceiling-height windows create beautiful environments for an exceptionally comfortable stay, with spectacular views over the city and its parks. All rooms feature a temperature-sensing, pressure-relieving mattress and a selection of pillows for restful repose. Large marble bathrooms with deep soaking tub, separate shower and luxury amenities spell 5 star indulgence.





BALCONY LOUNGE

A relaxed and chic space exclusively created for Regent Balcony guests that offer snacks, drinks, computers, books/magazines and meeting rooms, fulfilling all vacation and business needs. Other guests may also enjoy the Balcony Lounge benefits with additional fees. Balcony Lounge Services:

- Exclusive Reception Desk
- Lounge Area
- Books and Magazines
- Public Computers
- Meeting Rooms
- Wifi Connection
- Snack Bar

TAI PAN ROOMS



Experience Modern Chinese Lifestyle at Taipei's First All-Butler Hotel Within a Hotel.

Attentive to the particular needs of business guests, our exclusive Tai Pan rooms and suites provide a comfortable home away from home.

TAI PAN LOUNGE

A highlight of our Executive Floors, the Tai Pan Lounge pairs state-of-the-art business facilities with magnificent views of the city's well-tended parks and gardens. Guests staying on these floors enjoy full access to its privileges 24 hours a day, including:

- Dedicated butler services
- Lavish buffet breakfast and all-day coffee, tea and snacks
- Well-equipped workstations, meeting rooms, wireless Internet access, multimedia conference capabilities and commercial secretarial services

It's also the perfect place to enjoy a relaxing close to the day with a quiet drink and canapés at the bar.









Regent Taipei is an unparalleled destination for corporate and social functions, offering 16 versatile function and meeting venues, coupled with state-of-the-art facilities and impeccable service that bring distinction to every occasion.

MEETINGS & BANQUETING

One grand ballroom and nine multi-functional VIP spaces with the capacity to entertain eight to a thousand. For celebrations, parties, product launches, or board meetings, when only the best will do, rely on a team of professional event coordinators with the facilities and services to meet all your function dining needs.



	FUNCTION SPACE	DIMENSIC CAPACITY				
		L x W (m)	 Theater	 Classroom	 Banquet	 Reception
BALLROOM (3F)	BALLROOM	27× 32.9	600	300	55 table	1,000
	FOYER	7.7× 7.6				
	BALLROOM A	16.8× 21.6 7.7× 21.6	350	200	33 table	500
	BALLROOM B	16.8× 11.3 7.7× 11.3	200	96	15 table	200
V.I.P. 1-3 (4F)	V.I.P. 1	13.8× 10.3	130	72	7 table	150
	V.I.P. 2	12.0× 8	80	45	5 table	80
	V.I.P. 3	9.3× 6.4	50	24	4 table	40
V.I.P. 5-10 (4F)	V.I.P. 5	11.4× 9.4	80	54	6 table	80
	V.I.P. 6	11.4× 7.3	70	42	5 table	60
	V.I.P. 7	11.4× 9	80	54	6 table	80
	V.I.P. 8	6.8× 9.80	50	24	3 table	40
	V.I.P. 9	6.8× 8.90	50	24	3 table	40
	V.I.P. 10	6.8× 7.55	50	24	3 table	30
NOBLE HOUSE (1F)	NOBLE HOUSE	14.9× 17.6	360	160	22 table	250
EMPORIO (B3)	EMPORIO	10× 27	200	132	14 table	200
	EMPORIO A	10× 17	160	84	10 table	150
	EMPORIO B	10× 10	80	48	4 table	50

EVENT VENUES

The hotel is equipped with over 24,000 square feet of function space, from VIP rooms for private business meetings, to an elegant ballroom that can accommodate conferences and grand banquets with equal excellence.



WEDDING SALON

Combining Regent Taipei's renowned professional wedding team and Regent Galleria's signature shopping butler service, to create the most blissful multi-purpose space! Regularly collaborating with various luxury jewelry and fashion brands, to plan the perfect wedding while assisting the couple's every shopping need. To provide the most luxurious, varied and complete wedding consulting services in a premier yet relaxing space.



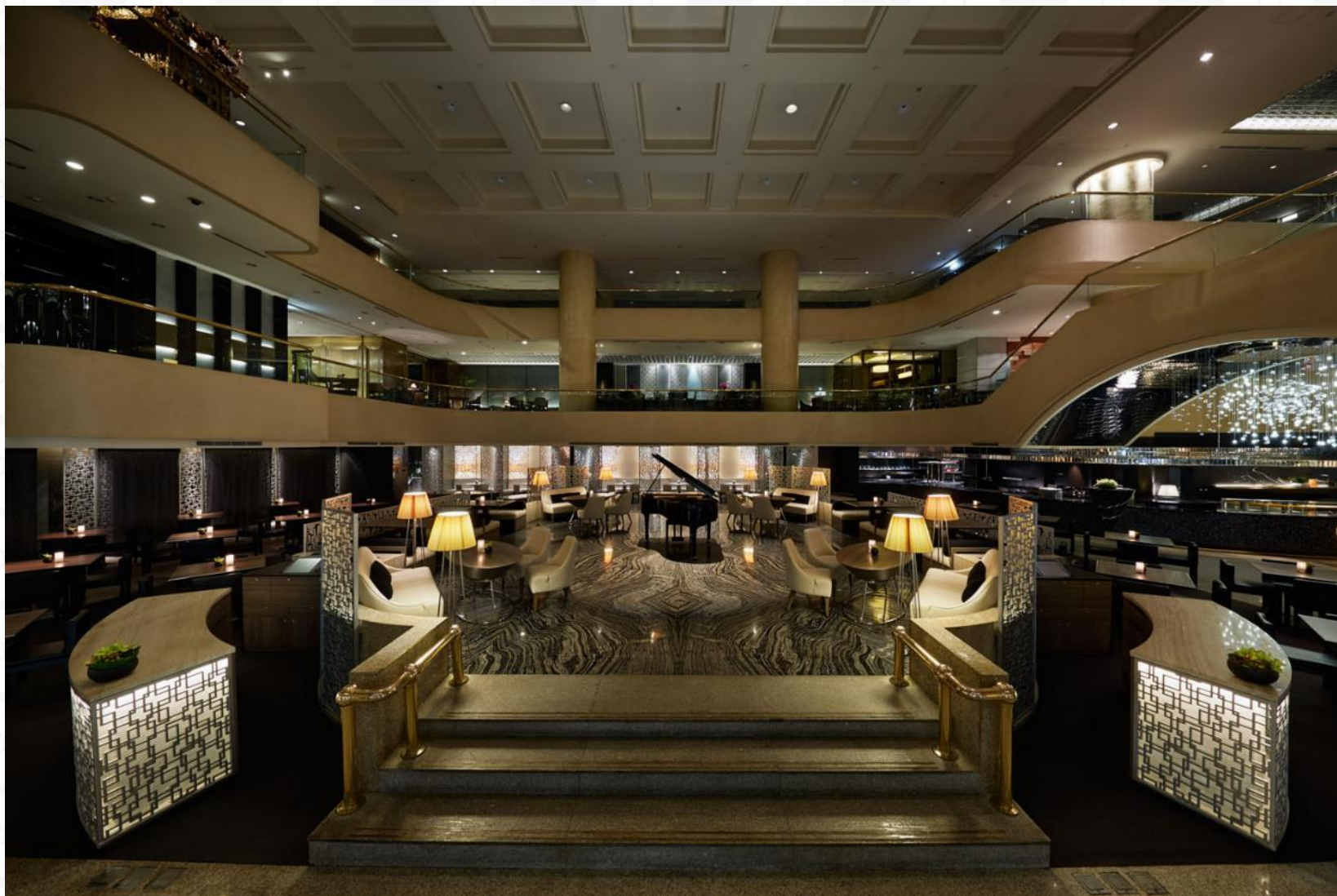


Journey into a world of international cuisines at Regent Taipei, where seven exquisite restaurants entice guests with a variety of epicurean offerings.

MIHAN HONKE

The three traditional cuisines of shabu shabu, robatayaki and kaiseki are presented to perfection in our authentic five-star Japanese char-grill restaurant, which evokes the vibrancy of one of the world's most fascinating gastronomic cultures. An exciting experience for all the senses.





AZIE

Bringing Taipei's first Grand Café concept into the modern age, azie boasts a stunning open-top atrium design and a creative fusion of contemporary Asian and Western cuisine. From fresh salads and sandwiches to fragrant noodles, innovative gourmet pizzas and indulgent desserts, azie's ever-changing season-inspired menu is filled with novel delights, accompanied by live music in the evening.



BRASSERIE

Enjoy the theater of an open kitchen and the sumptuous selection of Taipei's most renowned all-you-can-eat buffet. All-day dining revolves around refined cuisines from all over the world, including a full salad bar, made-to-order pasta and noodles, succulent seafood, a grand sushi bar serving the freshest sashimi, and abundant fusions of East and West, while a mouthwatering dessert selection offers sweet indulgence.





GALLERY

From a freshly brewed coffee to perk up your day, to specially concocted drinks when rendezvousing with friends, the Gallery is a chic, relaxed environment to enjoy moments of respite and refreshment, serving light meals, snacks and beverages throughout the day.



ROBIN'S GRILL

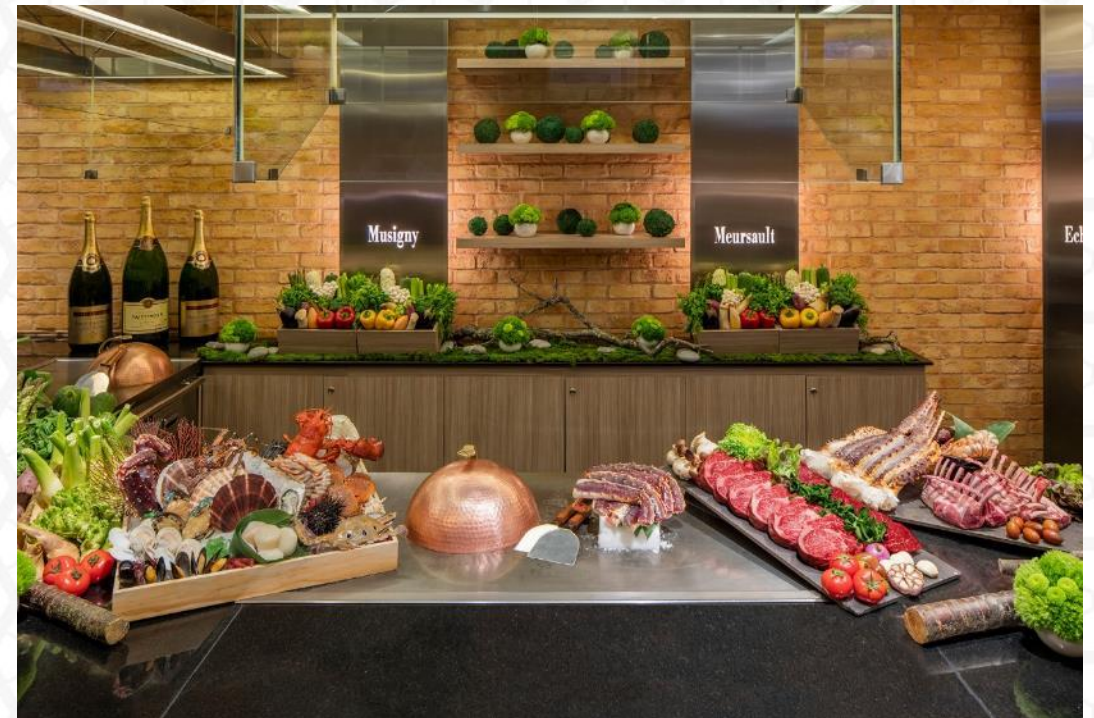
Robin's Grill offers a distinguished yet simple menu of charcoal-grilled prime beef, the freshest seafood and a salad bar second to none. Four VIP rooms with a capacity of 8 to 30 grace this elegant restaurant and extend to you the warm hospitality characteristic of Regent Taipei.





ROBIN'S TEPPANYAKI

Indulge in a spectacular fusion of the finest Western ingredients and Japanese culinary flair, presented with French style. Succulent meats and seafood are prepared on a traditional teppanyaki-style grill, enjoyed within a convivial ambience. For those looking for a more intimate atmosphere, we offer private dining rooms for parties of between 8 and 40.



SILKS HOUSE

From steaming baskets of dim sum to sumptuous banquet dishes, this fine-dining establishment offers neo-Szechuan and Cantonese cuisine, beautifully prepared and artfully plated. Savor an eloquent gourmet experience within an exquisite environment that blends the graceful beauty of traditional Chinese calligraphy with a chic, contemporary design. The restaurant's ten private dining rooms provide a gem of exclusivity for hosting special occasions.





Housing many of the world's finest high-fashion boutiques, Regent Galleria is the largest shopping center providing a range of upscale luxury brand shops within a 5-star hotel in Taiwan.

REGENT GALLERIA

Known as the “Home of Fashion” in Taipei City, Regent Galleria has offered personalized service to its prestigious clientele for more than 25 years. Clients include the elite and Regent Taipei's hotel guests as the luxurious shopping experience is only an elevator ride away. It also offers its VIP members valuable reward programs, including annual rewards, frequent guest rewards, monthly rewards, and a VIP lounge for guests to rest or attend exclusive events and activities. Our most popular “Shopping Butler Service” allows guests to enjoy premier benefits such as exclusive showrooms, guided tours, shopping discounts and personalized deliveries, satisfying our patrons' every need while perusing shops at Regent Galleria.



TASTE LAB

The all new lifestyle restaurant TASTE LAB, located at Regent Galleria B2, is a new space designed for the intersection of gourmet, creativity and innovation.

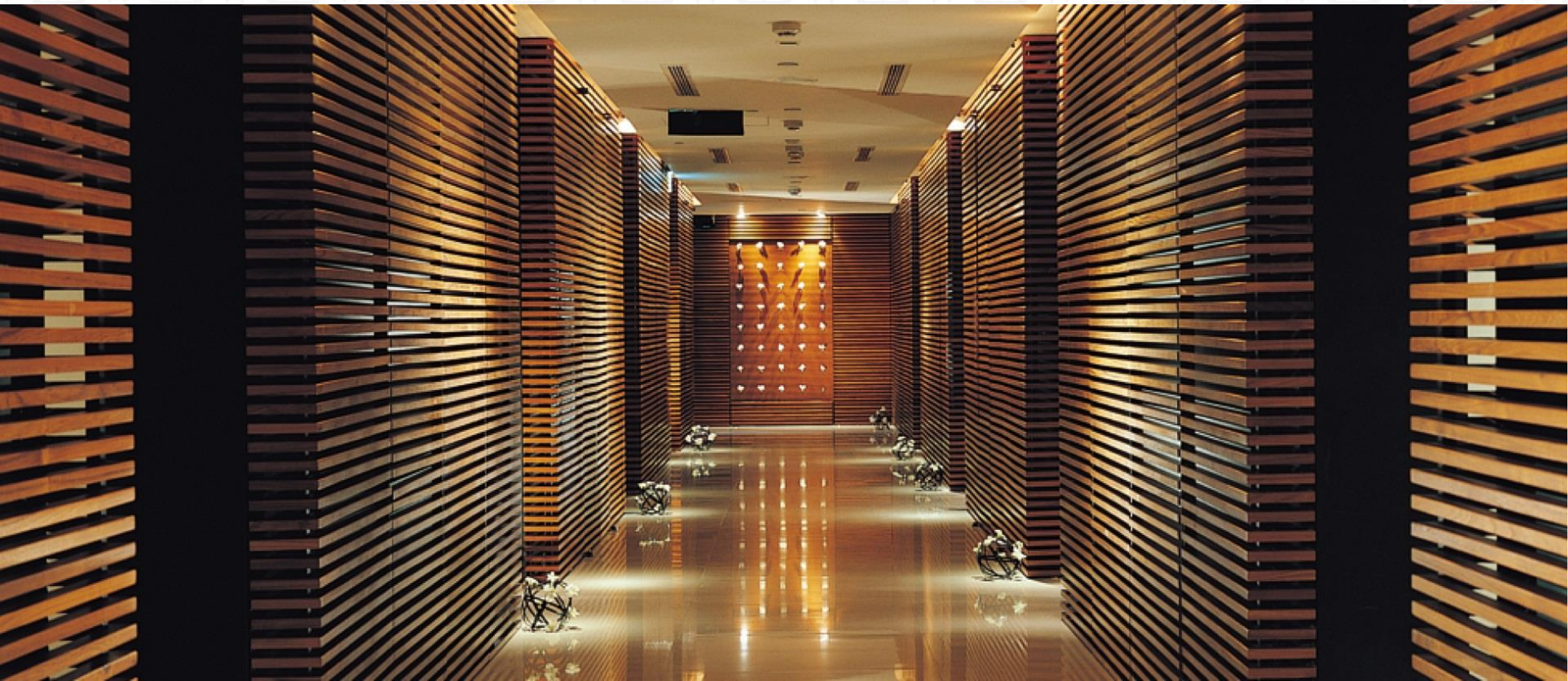
TASTE LAB utilizes the Regent brand's extensive international resources, bringing in the most premier elements and ingredients, offering guests a world-class space for dining, shopping and entertainment.



SECRET GARDEN

Offering customers the perfect respite from a busy day's shopping, Secret Garden is a unique urban garden concept offering exceptional gourmet offerings, artisan handicrafts, and Regent floral collections. Aside from a luxurious picnic themed menu featuring fashionable bites, artful small plates and seasonal drinks, there is a selection of dishes perfect for takeaway for guests who are on-the-go. Secret Garden also features creations from Regent Taipei's floral shop and various other artists, making it a one stop shop and an all-encompassing lifestyle experience!





Take time out from the hectic pace of the city to recharge mind and body.

WELLSPRING SPA

An abundant source of health and beauty, Wellspring Spa offers an extensive range of rejuvenating treatments inspired by wellness traditions from around the world. Experience deep relaxation and renewed radiance within the sanctuary of eight single and two double treatment rooms, all with in-built steam shower.





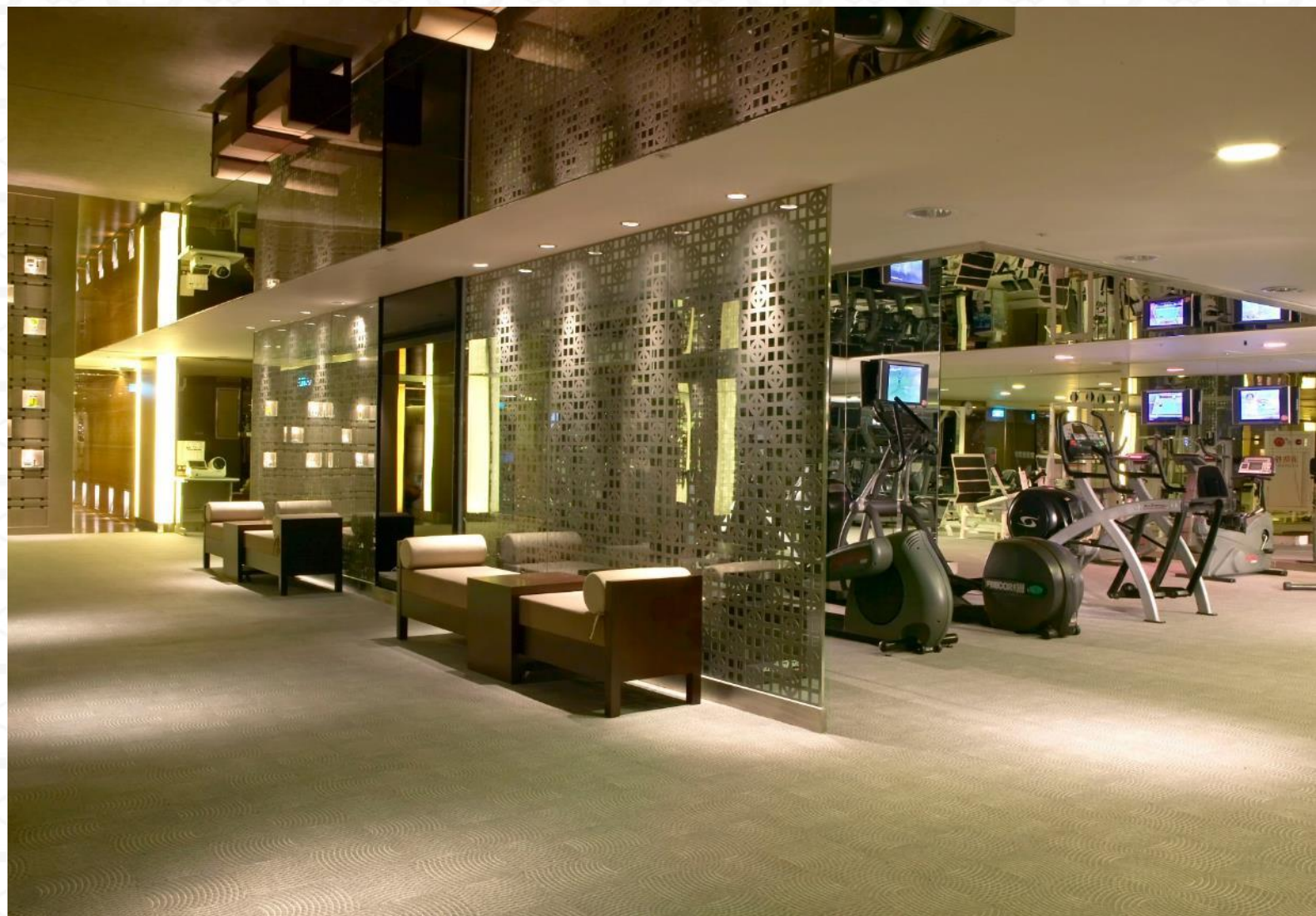
SWIMMING POOL

Fully heated all year round, our rooftop swimming pool provides a spectacular setting to unwind or refresh with some exercise after a day of sightseeing or business meetings.



HEALTH CLUB

An abundant source of health and beauty, Wellspring Spa offers an extensive range of rejuvenating treatments inspired by wellness traditions from around the world. Experience deep relaxation and renewed radiance within the sanctuary of eight single and two double treatment rooms, all with in-built steam shower.





REGENT TAIPEI

No 3, Lane 39, Section 2, ZhongShan N, Rd. Taipei 104, Taiwan

TEL: +886-2-2523-8000

FAX: +886-2-2523-2828

Website: www.regenttaiwan.com

E-Mail: customerservice@regenttaiwan.com