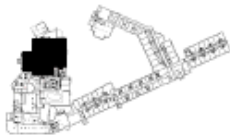
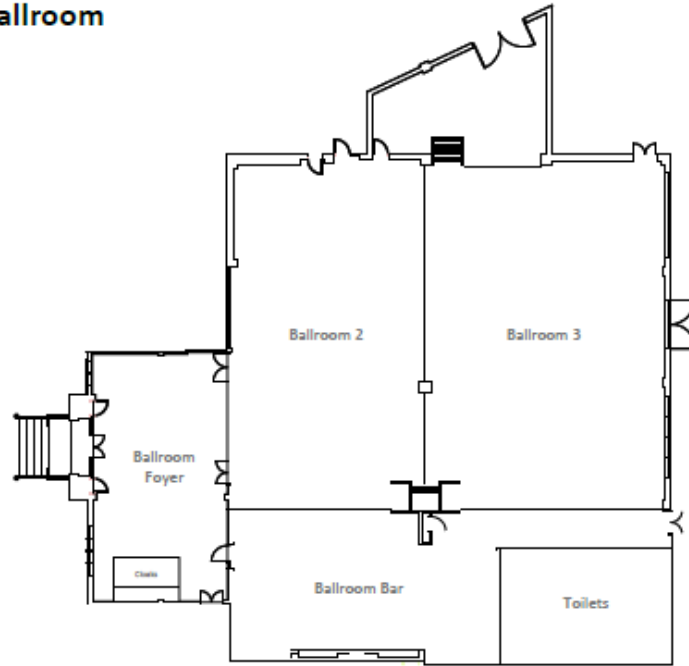
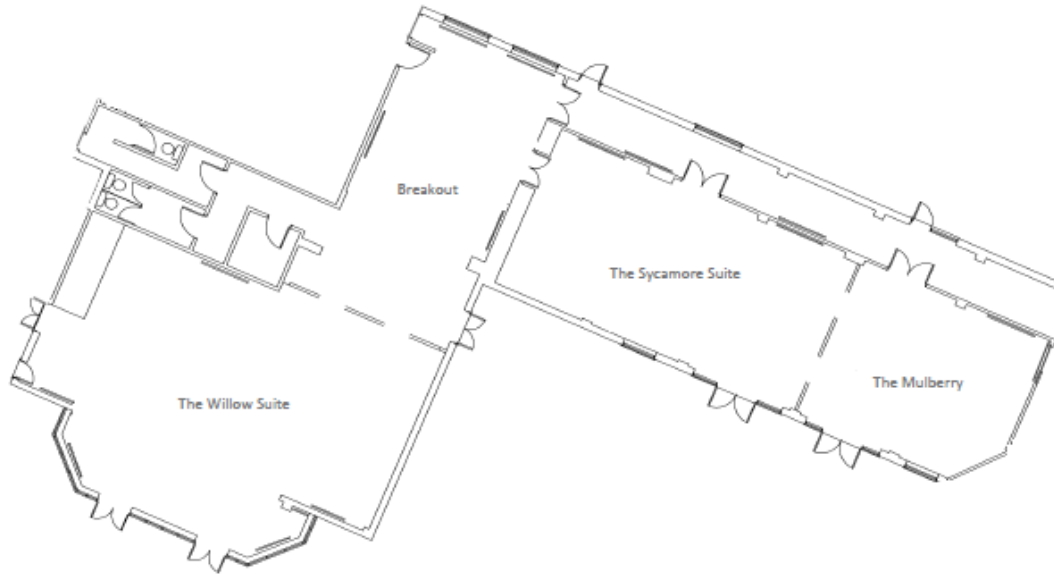


## The Grand Ballroom



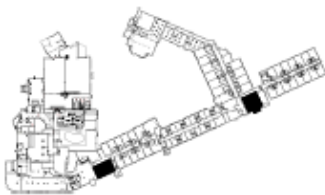
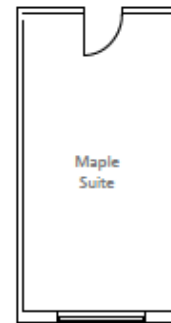
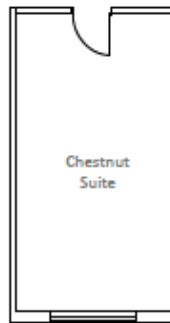
	Theatre	Cabaret	Boardroom	U-Shape	Dinner Only	Dinner Dance	Classroom	Reception	Size (metres)	Height (m)	Sockets	Internet Points	Telephone Points
The Grand Ballroom	500	180	70	60	330	300	200	500	23 x 17.3	3,6	8	WiFi	N/A
Ballroom 2	200	72	50	40	120	80	80	200	10 x 17.3	3,6	2	WiFi	N/A
Ballroom 3	250	110	60	50	140	100	80	250	13 x 17.3	3,6	6	WiFi	N/A

## The Treo Suite



	Theatre	Calaret	Boardroom	U-Shape	Dinner Only	Dinner Dance	Classroom	Reception	Size (metres)	Height (m)	Sockets	Internet Points	Telephone Points
Willow Suite	60	40	36	30	60	30	20	100	8 x 5.6	2.4	12	7	1
Sycamore Suite	40	30	26	20	48	20	16	75	11 x 6.3	2.4	11	7	1
Mulberry Suite	20	16	16	12	12	N/A	12	30	7 x 6.3	2.4	8	7	1
Mulberry Suite & Sycamore Suite	80	56	40	36	80	60	28	100	18 x 6.3	2.4	19	14	2

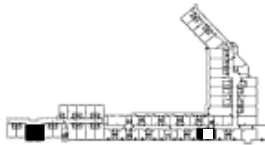
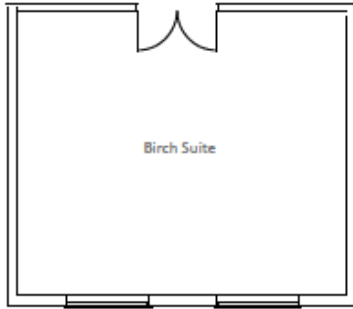
## Chestnut & Maple Suites



	Theatre	Cabaret	Boardroom	U-Shape	Dinner Only	Dinner Dance	Classroom	Reception	Size (metres)	Height (m)	Sockets	Internet Points	Telephone Points
Chestnut Suite	12	N/A	10	N/A	10	N/A	N/A	N/A	6.4 x 3.5	2.4	9	6	1
Maple Suite	12	N/A	10	N/A	10	N/A	N/A	N/A	6.4 x 3.5	2.4	9	6	1

## Birch Suite

Located on the 2nd Floor



	Theatre	Cabaret	Boardroom	U-Shape	Dinner Only	Dinner Dance	Classroom	Reception	Size (metres)	Height (m)	Sockets	Internet Points	Telephone Points
Birch Suite	20	20	16	12	N/A	N/A	12	30	6.9 x 5.6	2.4	14	10	1